

STATE	PROJECT NO.	YEAR	SHEET NO.	TOTAL SHEETS
KANSAS	87 N-0660-01	2019	11	198

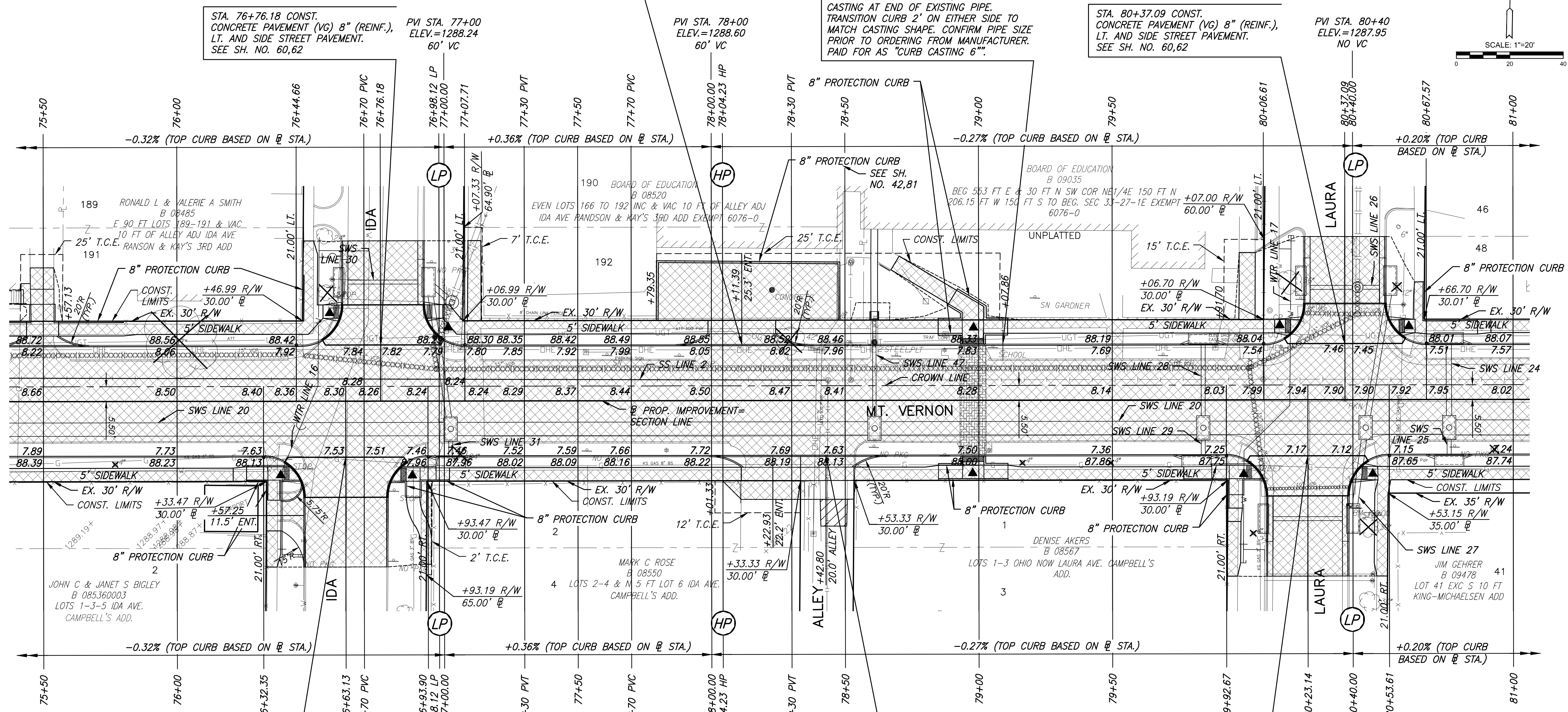
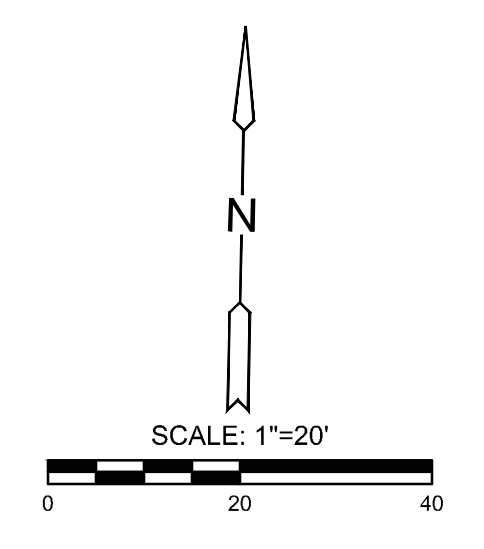


STATION	OFFSET	EXIST. ELEV.	PROP. ELEV.	REMARKS
76+58.08	45.57' LT.	1288.51		WATER METER RELOCATE
78+43.59	7.59' LT.	1288.12	1288.36	SS MH ADJUSTMENT
78+52.17	7.60' LT.	1288.07	1288.34	SS MH ADJUSTMENT
80+06.43	7.67' LT.	1287.97	1287.92	SS MH ADJUSTMENT
80+59.03	35.51' LT.	1288.80	1288.03	METER BOX ADJUSTMENT

STA. 78+11.39 SEE DRIVEWAY PLAN FOR ADDITIONAL CONSTRUCTION INFORMATION SEE SH. NO. 19

STA. 79+09.1, 21.0' LT. CONST. NEENAH R-3262-3 OR EQUIVALENT CURB CASTING AT END OF EXISTING PIPE. TRANSITION CURB 2' ON EITHER SIDE TO MATCH CASTING SHAPE. CONFIRM PIPE SIZE PRIOR TO ORDERING FROM MANUFACTURER. PAID FOR AS "CURB CASTING 6"."

STA. 80+37.09 CONST. CONCRETE PAVEMENT (VG) 8" (REINF.), LT. AND SIDE STREET PAVEMENT. SEE SH. NO. 60,62



STA. 76+63.13 CONST. CONCRETE PAVEMENT (VG) 8" (REINF.), RT. AND SIDE STREET PAVEMENT. SEE SH. NO. 60,62

STA. 78+42.80 CONST. CONCRETE ALLEY 8" AND 11.0 S.Y. OF AGGREGATE HOOKUP. SEE SH. NO. 64,82

STA. 80+23.14 CONST. CONCRETE PAVEMENT (VG) 8" (REINF.), RT. AND SIDE STREET PAVEMENT. SEE SH. NO. 60,62

STATION	OFFSET	ITEM	REMARKS
75+50.0 TO 76+44.4	17.6' LT.	91.4' OF 15" VCP	
76+44.4	17.4' LT.	CURB INLET	
76+44.4 TO 76+97.4	17.4'-11.9' LT.	50.4' OF 15" VCP	
76+97.4	11.9' LT.	STORM SEWER MANHOLE	
76+96.3	20.9' LT.	CURB INLET	
76+97.4 TO 80+01.3	11.9' LT.	303.9' OF 15" VCP	
76+96.3 TO 76+97.4	20.9'-11.9' LT.	8.2' OF 15" VCP	
76+96.3 TO 77+03.8	20.9'-39.3' LT.	18.5' OF 24" VCP	
80+01.3	11.9' LT.	STORM SEWER MANHOLE	
80+01.3 TO 80+01.7	11.9'-16.5' LT.	3.6' OF 12" VCP	

STATION	OFFSET	ITEM	REMARKS
80+01.3 TO 80+06.7	11.9' LT.-33.4' RT.	42.9' OF 15" VCP	
80+01.3 TO 80+41.8	11.9'-31.9' LT.	45.2' OF 15" VCP	
80+06.7	33.4' RT.	CURB INLET	
80+06.7 TO 80+39.7	33.4'-32.6' RT.	31.0' OF 10" VCP	
80+39.7	32.6' RT.	CURB INLET	
80+20.5	32.2' LT.	CURB INLET	
80+20.5 TO 80+41.8	32.2'-31.9' LT.	20.2' OF 12" VCP	
80+41.8	31.9' LT.	STORM SEWER MANHOLE	
80+41.8	31.9'-44.0' LT.	12' OF 15" VCP	
80+41.8 TO 80+53.3	32.0' LT.	10.6' OF 12" VCP	

STATION TO STATION	SIDE	QUANTITY	REMARKS
STA. 75+53.98 TO STA. 75+80.00	LT.	32.9	AT DRIVE ENTRANCE
STA. 76+25.97 TO STA. 76+41.98	RT.	46.4'	AT SW CORNER INTERSECTION IDA
STA. 76+46.99	LT.	17.0'	AT NW CORNER INTERSECTION IDA
STA. 76+83.70 TO STA. 77+01.90	RT.	42.4'	AT SE CORNER INTERSECTION IDA
STA. 77+80.08 TO STA. 78+47.46	LT.	112.6'	AT SCHOOL DRIVE ENTRANCE
STA. 78+84.90 TO STA. 79+10.90	LT.	69.8'	AT SCHOOL CROSSING
STA. 78+84.90 TO STA. 79+10.90	RT.	50.7'	AT SCHOOL CROSSING
STA. 79+76.69 TO STA. 80+02.14	RT.	56.3'	AT SW CORNER INTERSECTION LAURA
STA. 80+66.20 TO STA. 80+86.70	LT.	35.0'	AT NE CORNER INTERSECTION LAURA

**LEGEND**

- PAVEMENT REMOVAL
- CONSTRUCT WHEELCHAIR RAMP SEE SH. NO. 68
- AGGREGATE HOOKUP
- BRICK PAVERS
- PAVEMENT REMOVED AND REPLACED
- 8" SIDEWALK
- STORM SEWER REMOVAL
- TREE REMOVAL
- CURB HEIGHT TRANSITION

PROJECT NO.	87 N-0660-01	
DATE	8/19/2019	
SCALE	1"=20'	
DESIGNED	JRA	
DRAWN	WNJ	
CHECKED	JRA	
NO.	REVISION	DATE
SHEET NO. 11 OF 198		

STREET IMPROVEMENTS FOR  
**MT. VERNON IMPROVEMENTS**  
 BROADWAY TO SOUTHEAST BLVD.

©2019 MKEC Engineering All Rights Reserved  
 These drawings and their contents, including, but not limited to, all concepts, designs, & ideas are the exclusive property of MKEC Engineering (MKEC), and may not be used or reproduced in any way without the express consent of MKEC.