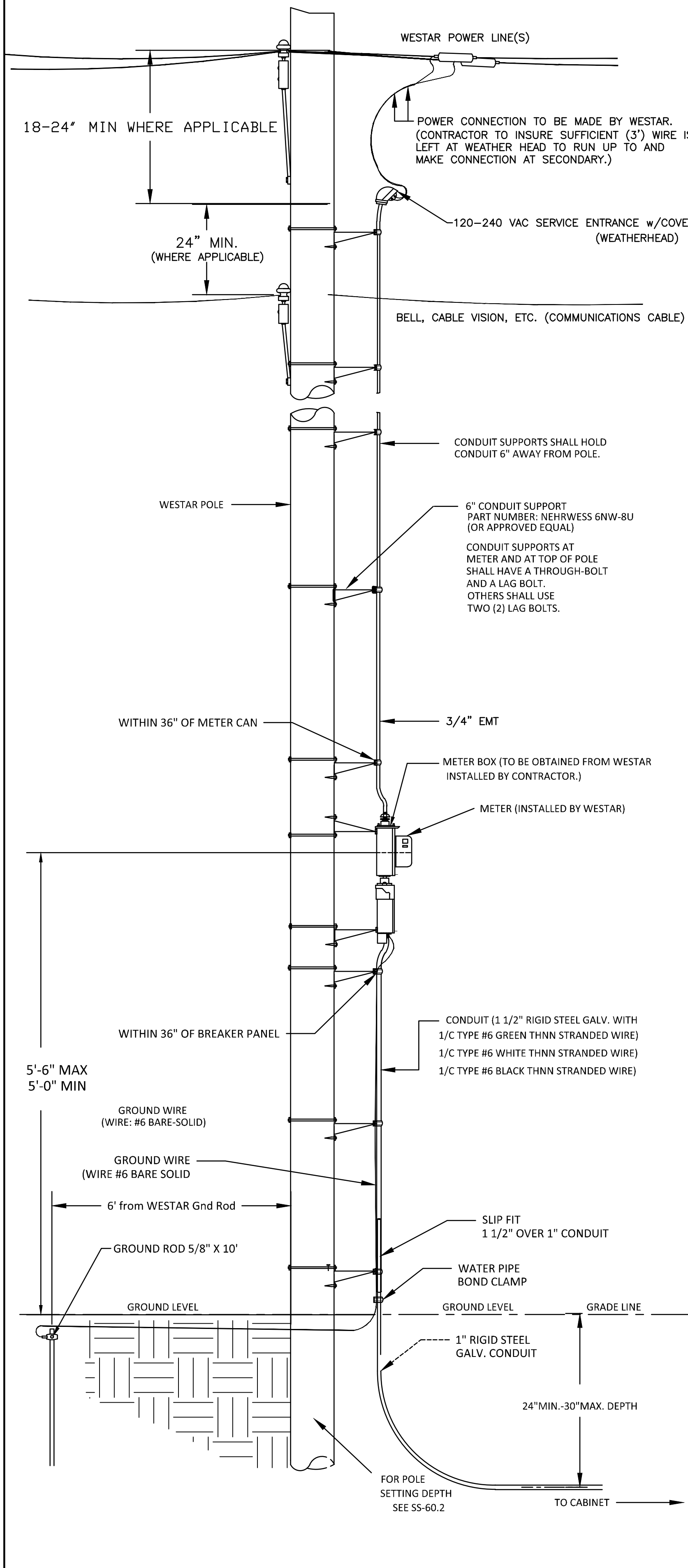
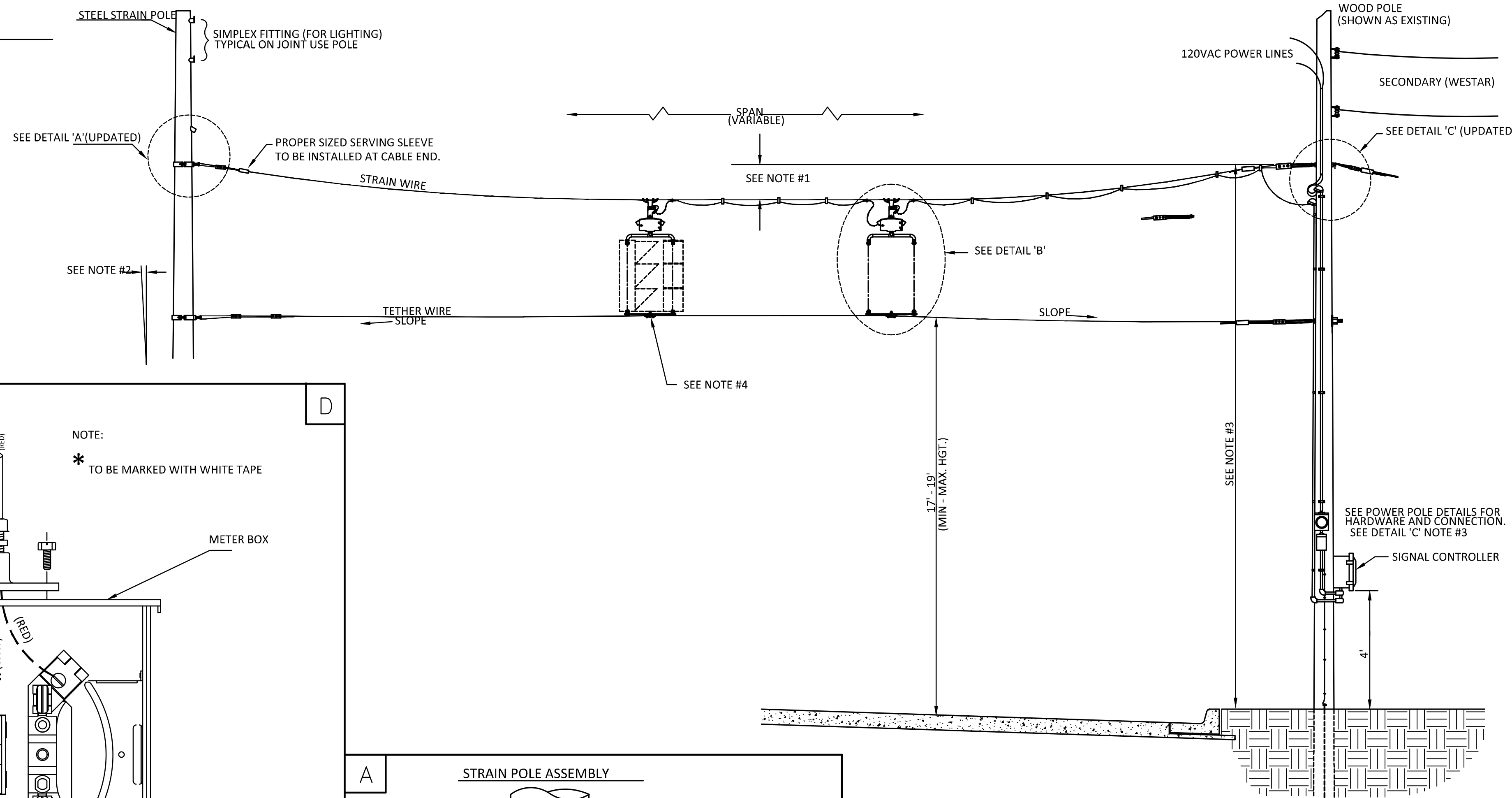


POWER POLE DETAILS

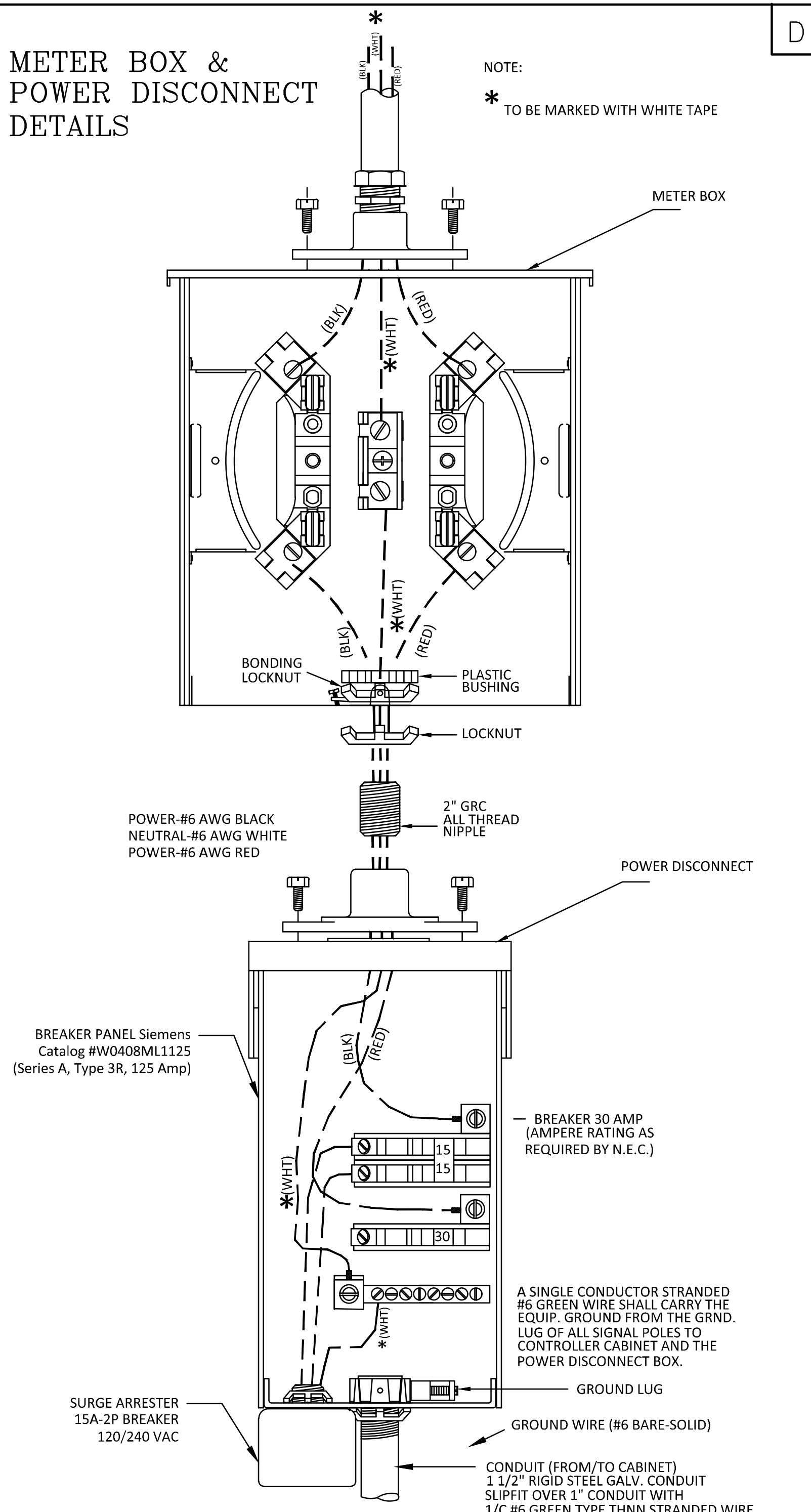


SPANWIRE ASSEMBLY DETAILS

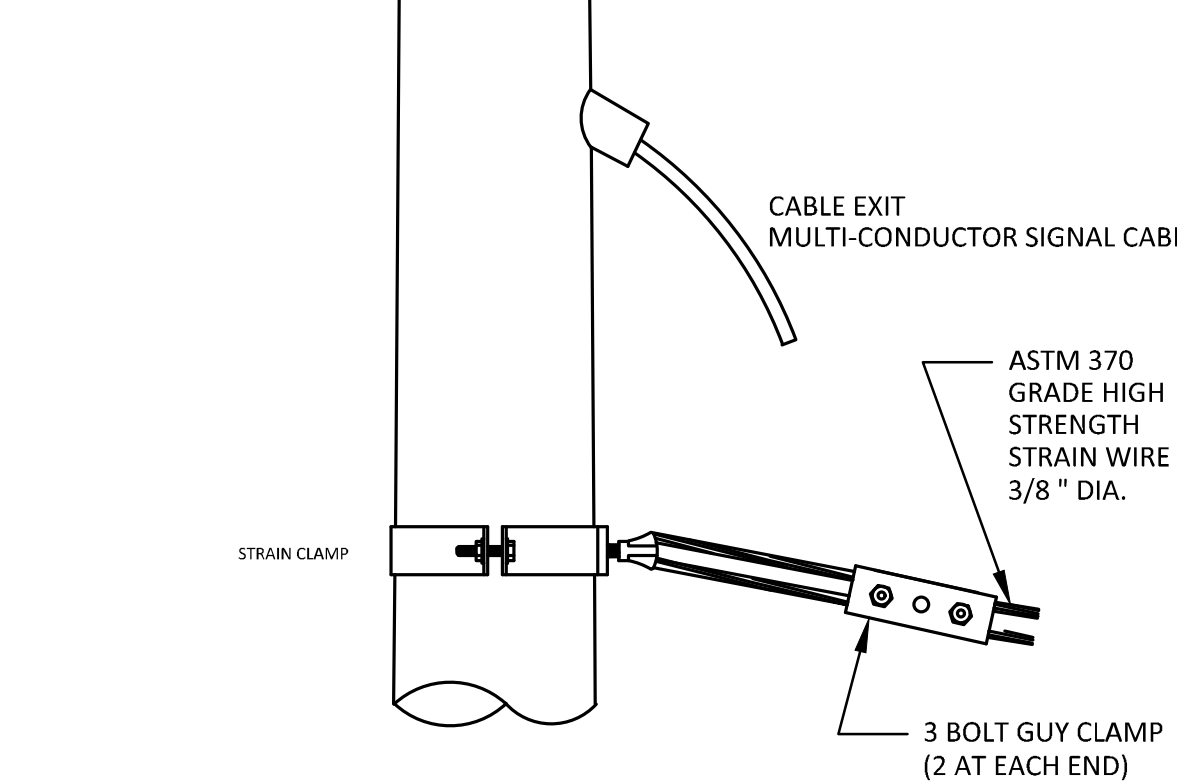
1. MAX. SAG = 5% OF SPAN.
2. STANDARD BACKRAKE = 1.5"
3. HEIGHT OF STRAIN WIRE HOOK-UP TO BE DETERMINED BY FIELD ENGINEER. TRAFFIC SIGNAL CABLE TO BE SECURED TO STRAIN (SPAN) WIRE WEATHERABLE NYLON CABLE HANGERS (12" CTR.) DETAIL 'B'
4. TETHER CLAMP TO BE DESIGNED TO RELEASE UNDER 'HIGH WIND LOAD' TO PERMIT SIGNAL 'FREE SWING'.



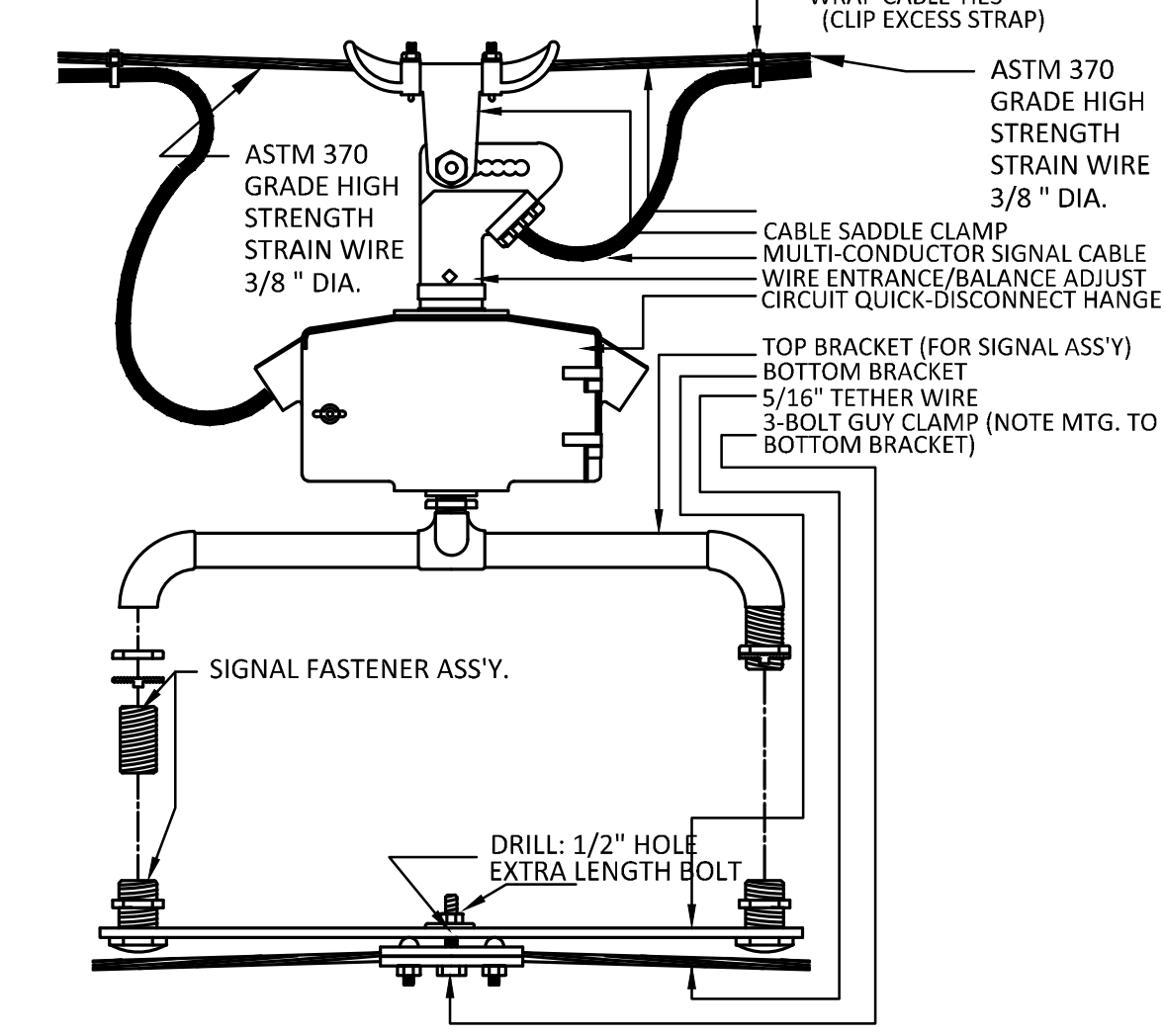
METER BOX & POWER DISCONNECT DETAILS



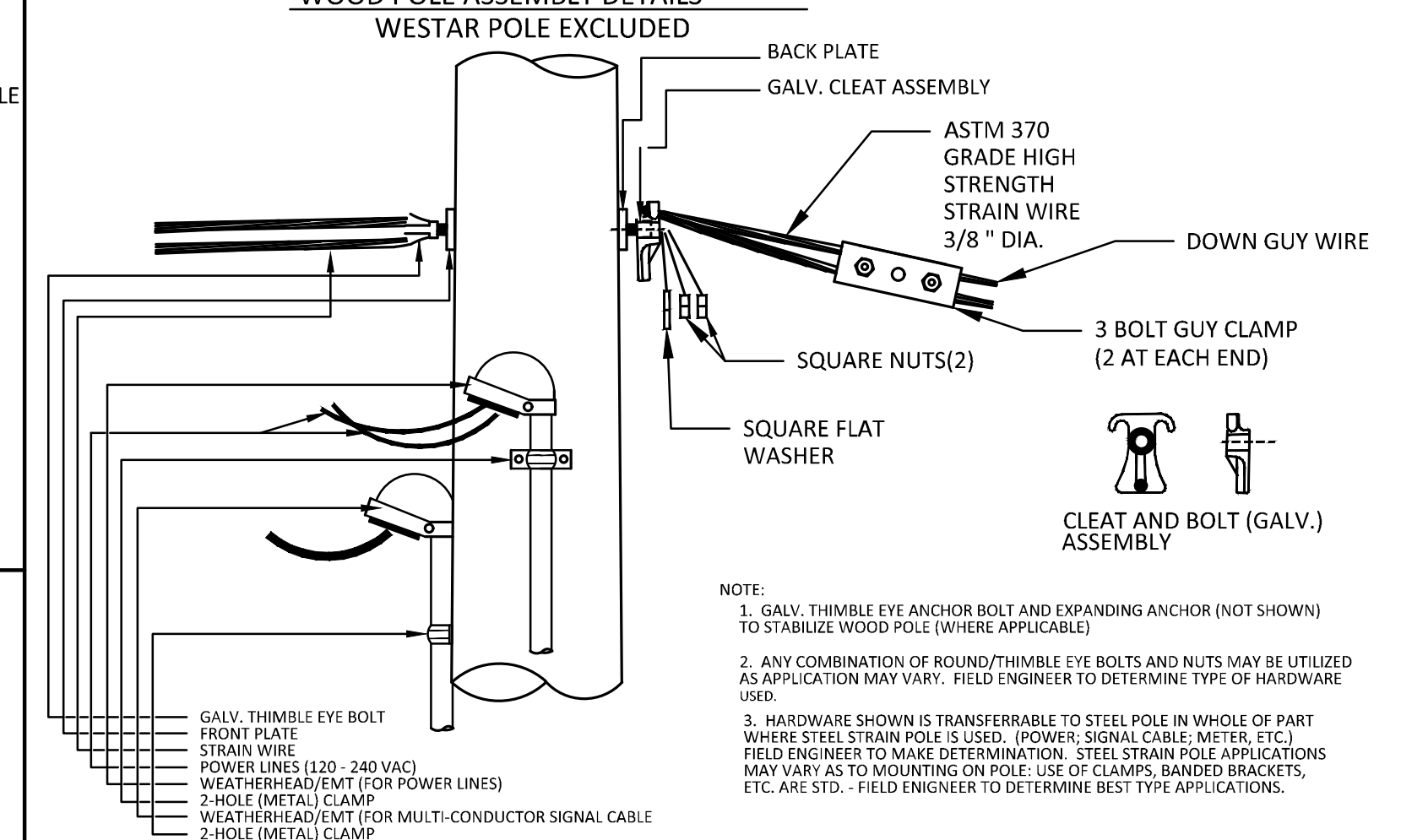
A STRAIN POLE ASSEMBLY




B SIGNAL BRACKET ASSEMBLY DETAILS



C WOOD POLE ASSEMBLY DETAILS WESTAR POLE EXCLUDED



REVISION DATE	9-8-2017	Multiple changes, approved Chris Nordick, MABCD	A.S.
 <p>CITY OF WICHITA PUBLIC WORKS & UTILITIES ENGINEERING DIVISION</p>			
<p>POWER POLE AND SPAN POLE ASSEMBLY DETAILS</p> <p>TRAFFIC ENGINEER BRIAN A. COON P.E.</p>			
PROJECT NUMBER	OCA NUMBER	DATE	
87 N-0660-01	706987	8/19/2019	
CITY ENGINEER'S OFFICE			SHEET
CITY HALL - SEVENTH FLOOR 455 NORTH MAIN STREET WICHITA, KANSAS 67202-1620 (316) 268-4501			126
			126 OF 198