



STA. 90+76.63 TO STA. 90+96.92 CONST.
17.8 S.Y. OF AGGREGATE HOOKUP.
SEE SH. NO. 82

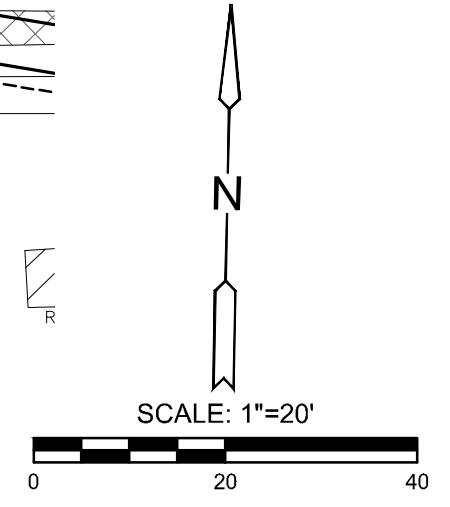
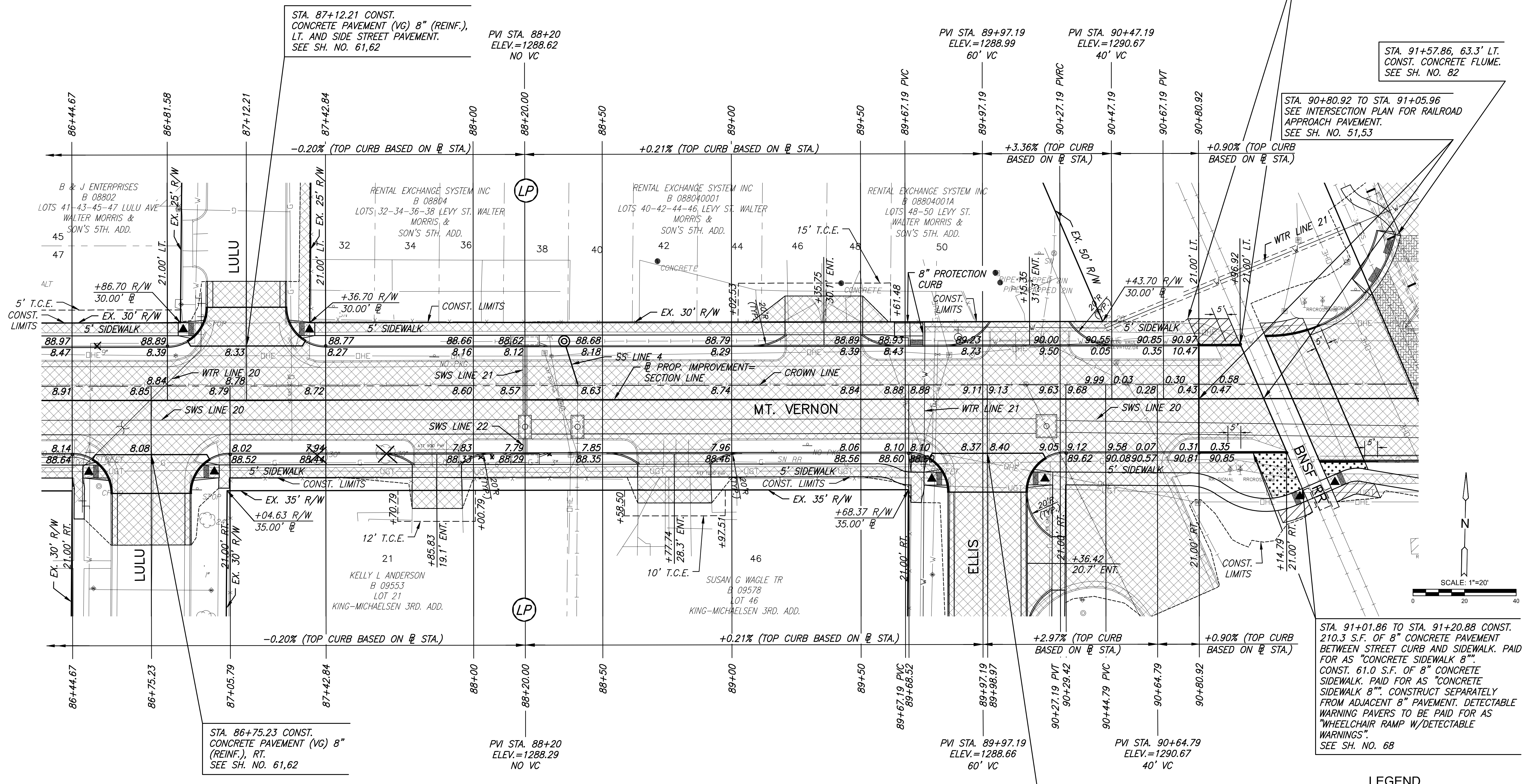
STA. 91+57.86, 63.3' LT.
CONST. CONCRETE FLUME.
SEE SH. NO. 82

STA. 90+80.92 TO STA. 91+05.96
SEE INTERSECTION PLAN FOR RAILROAD
APPROACH PAVEMENT.
SEE SH. NO. 51,53

STA. 89+98.97 CONST.
CONCRETE PAVEMENT (VG) 8" (REINF.),
RT. AND SIDE STREET PAVEMENT.
SEE SH. NO. 61,62

STA. 87+12.21 CONST.
CONCRETE PAVEMENT (VG) 8" (REINF.),
LT. AND SIDE STREET PAVEMENT.
SEE SH. NO. 61,62

STA. 86+75.23 CONST.
CONCRETE PAVEMENT (VG) 8"
(REINF.), RT.
SEE SH. NO. 61,62



STREET IMPROVEMENTS FOR
MT. VERNON IMPROVEMENTS
BROADWAY TO SOUTHEAST BLVD.

STATION	OFFSET	EXIST. ELEV.	PROP. ELEV.	REMARKS
87+91.67	22.62' LT.	1289.89	1288.93	SS MH ADJUSTMENT
88+40.41	6.14' LT.	1288.76	1288.59	SS MH ADJUSTMENT
90+13.88	5.74' LT.	1288.66	1289.36	SS MH ADJUSTMENT
90+19.50	22.82' LT.	1289.35	1289.50	SS MH ADJUSTMENT
90+53.28	6.06' LT.	1289.44	1290.09	SS MH ADJUSTMENT

STATION TO STATION	SIDE	QUANTITY	REMARKS
STA. 89+63.07 TO STA. 89+74.74	LT.	29.0'	AT WHEELCHAIR RAMP

STATION	OFFSET	ITEM	REMARKS
89+78.9	16.5' RT.-4.5' RT.	12.0' OF 8" PIPE	

- LEGEND**
- PAVEMENT REMOVAL
 - CONSTRUCT WHEELCHAIR RAMP SEE SH. NO. 68
 - AGGREGATE HOOKUP
 - BRICK PAVERS
 - PAVEMENT REMOVED AND REPLACED
 - 8" SIDEWALK
 - STORM SEWER REMOVAL
 - TREE REMOVAL
 - CURB HEIGHT TRANSITION

©2019 MKEC Engineering All Rights Reserved
www.mkec.com
These drawings and their contents, including, but not limited to, all concepts, designs, & lists are the exclusive property of MKEC Engineering (MKEC), and may not be used or reproduced in any way without the express consent of MKEC.

PAVING PLANS
STA. 86+44.67 TO STA. 90+80.92

PROJECT NO.	87 N-0660-01
DATE	8/19/2019
SCALE	1"=20'
DESIGNED	JRA
DRAWN	WNJ
CHECKED	JRA

NO.	REVISION	DATE

SHEET NO.
13 OF 198