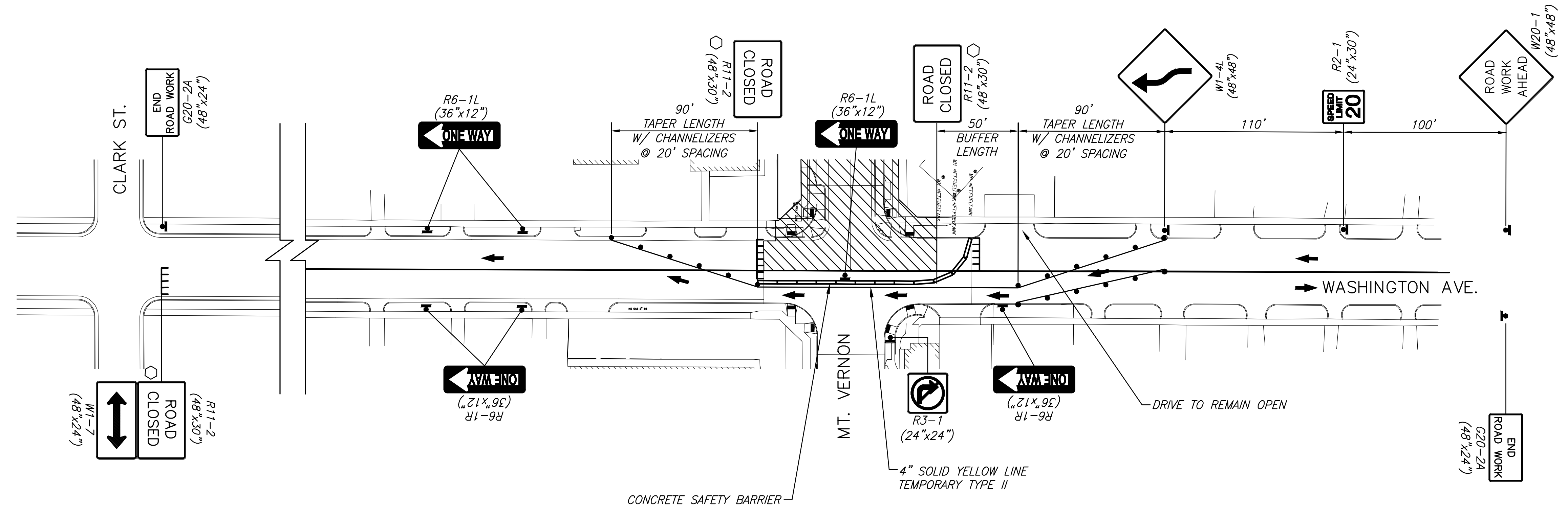
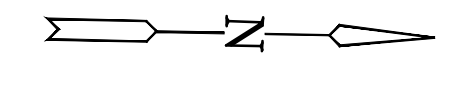


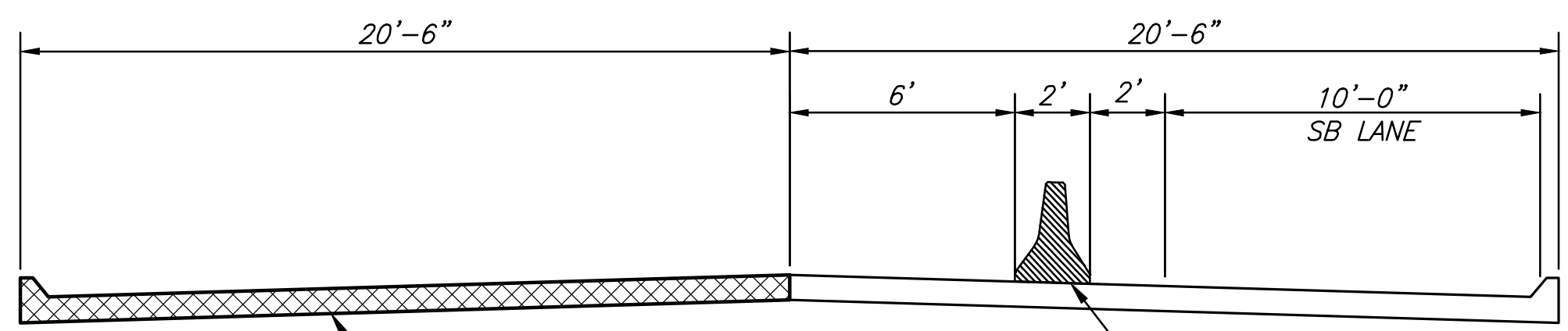
STATE	PROJECT NO.	YEAR	SHEET NO.	TOTAL SHEETS
KANSAS	87 N-0660-01	2019	149	198



NOTES:
EXISTING TRAFFIC SIGNAL AND CONFLICTING APPURTENANCES SHALL BE REMOVED AND A TEMPORARY TRAFFIC SIGNAL INSTALLED PRIOR TO CONSTRUCTING TEMPORARY PAVEMENT.

NOTES:
DISTRIBUTE FIVE (5) R6-1L AND FIVE (5) R6-1R SIGNS AS SHOWN ALONG WASHINGTON BETWEEN CLARK AND MT. VERNON.

TRAFFIC CONTROL ON WASHINGTON STREET - (PHASE 11)



WASHINGTON PAVEMENT CONSTRUCTED THIS PHASE

TEMPORARY CONCRETE SAFETY BARRIER NEEDED WHEN SIGNIFICANT DROP-OFF IS PRESENT AND DURING STORM SEWER INSTALLATIONS ADJACENT TO TRAFFIC. BARRIER SHALL BE INSTALLED ON EXISTING PAVEMENT OR ON TEMPORARY ASPHALT CONSTRUCTED IN ACCORDANCE WITH SHEET 160.

WASHINGTON SECTION - (PHASE 11)

LEGEND

	TYPE III BARRICADES WITH LIGHTS
	MOUNT ON TYPE III BARRICADE
	TYPE B WARNING LIGHT
	SIGN
	TRAFFIC FLOW
	WORK SPACE
	CONSTRUCTION COMPLETED
	CHANNELIZER

STREET IMPROVEMENTS FOR
MT. VERNON IMPROVEMENTS
BROADWAY TO SOUTHEAST BLVD.

©2019 MKEC Engineering All Rights Reserved
www.mkec.com
These drawings and their contents, including, but not limited to, all concepts, designs, & lists are the exclusive property of MKEC Engineering (MKEC), and may not be used or reproduced in any way without the express consent of MKEC.

TRAFFIC CONTROL PLAN - WASHINGTON (PH. 11)

PROJECT NO.	87 N-0660-01	
DATE	8/19/2019	
SCALE	NA	
DESIGNED	DRAWN	CHECKED
JRA	WNJ	JRA
NO.	REVISION	DATE

J:\CIVIL\081390\DWG\TC08139T02A.DWG
 PLOTTED Friday, August 23, 2019 @ 04:15 PM