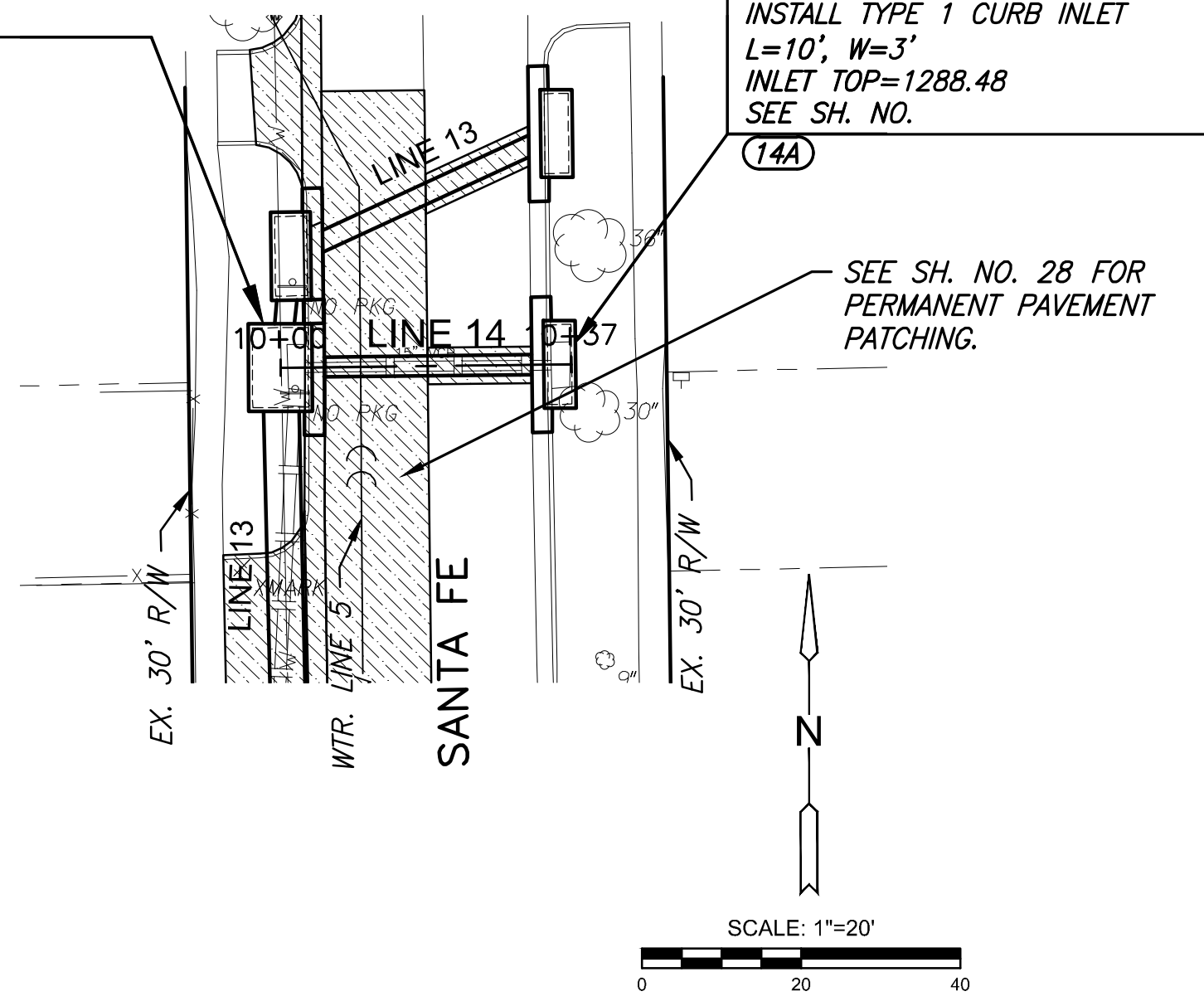


STATE	PROJECT NO.	YEAR	SHEET NO.	TOTAL SHEETS
KANSAS	87 N-0660-01	2019	29	198



STA. 10+00.0, SWS LINE 14=  
STA. 11+53.2, SWS LINE 13=  
ST. STA. 61+52.94, 142.17' LT.  
SEE SH. NO.

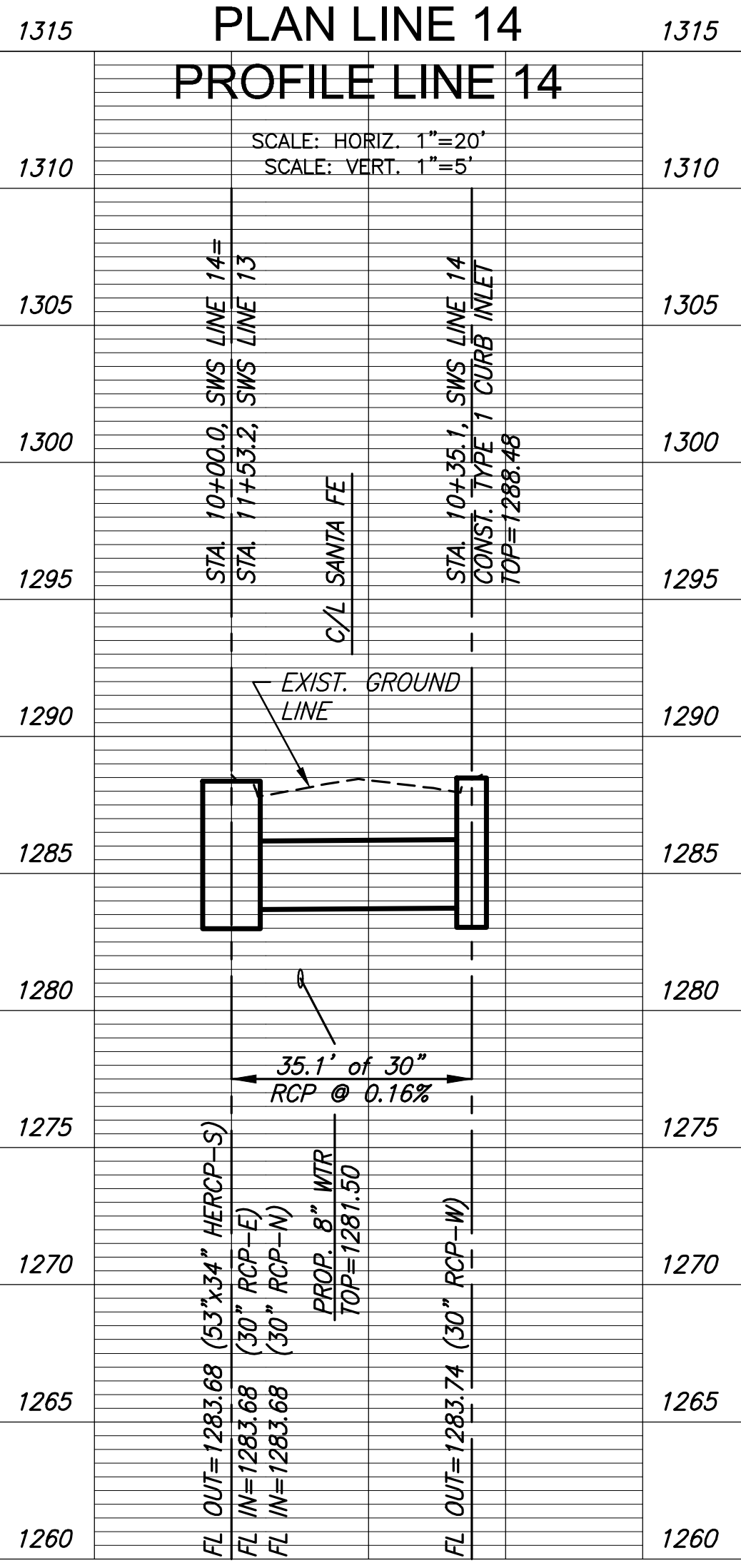
(13A)



STA. 10+35.1, SWS LINE 14  
ST. STA. 61+87.99, 141.80' LT.  
INSTALL TYPE 1 CURB INLET  
L=10', W=3'  
INLET TOP=1288.48  
SEE SH. NO.

(14A)

SEE SH. NO. 28 FOR  
PERMANENT PAVEMENT  
PATCHING.



PLAN LINE 14  
PROFILE LINE 14

SCALE: HORIZ. 1"=20'  
SCALE: VERT. 1"=5'

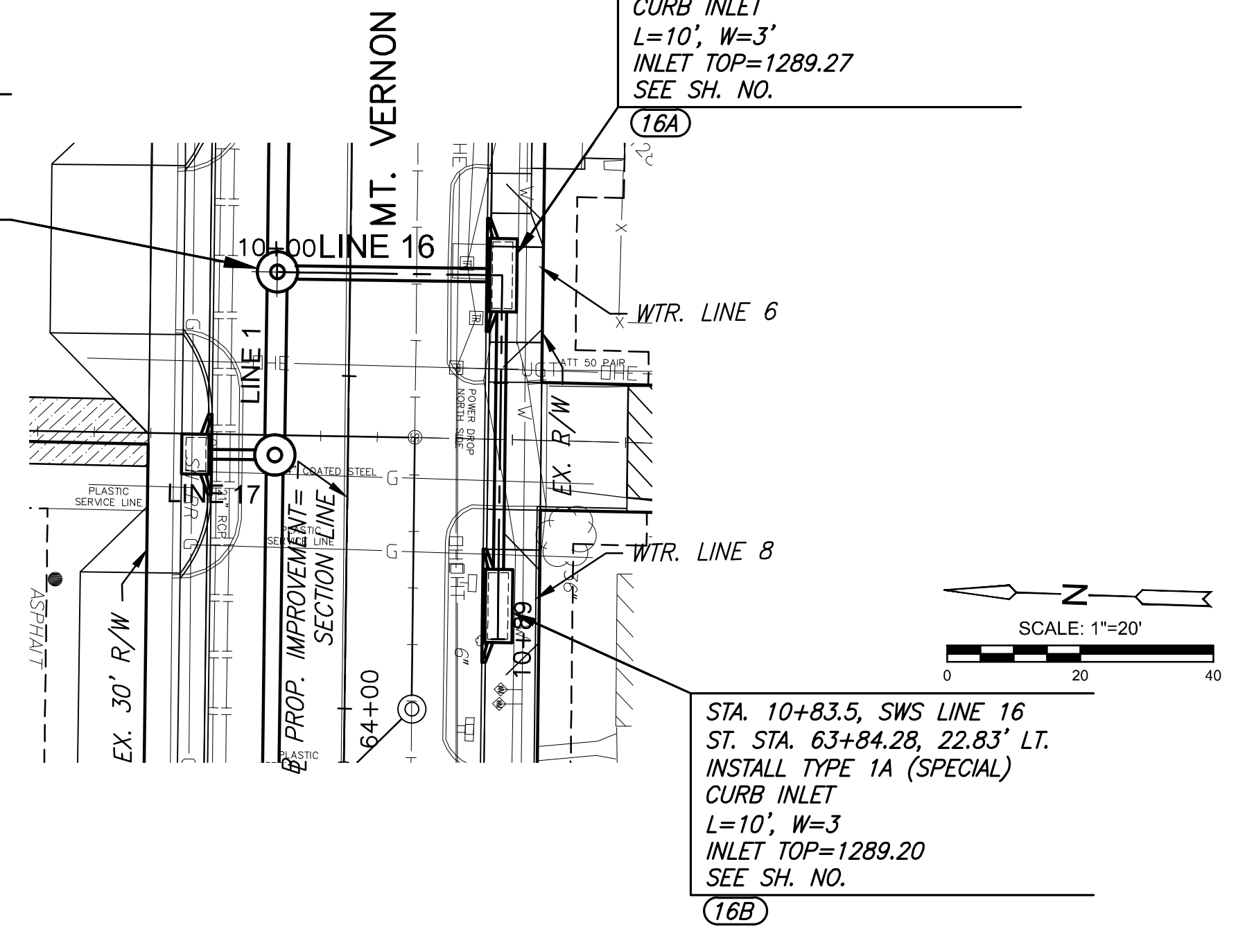
35.1' of 30"  
RCP @ 0.16%

FL OUT=1283.68 (53"x34" HERCP-S)  
FL IN=1283.68 (30" RCP-E)  
FL IN=1283.68 (30" RCP-N)  
PROP. 8" WTR  
TOP=1287.50

FL OUT=1283.74 (30" RCP-W)

STA. 10+00.0, SWS LINE 16=  
STA. 23+41.5, SWS LINE 1=  
ST. STA. 63+34.53, 11.00' RT.  
SEE SH. NO.

(1N)

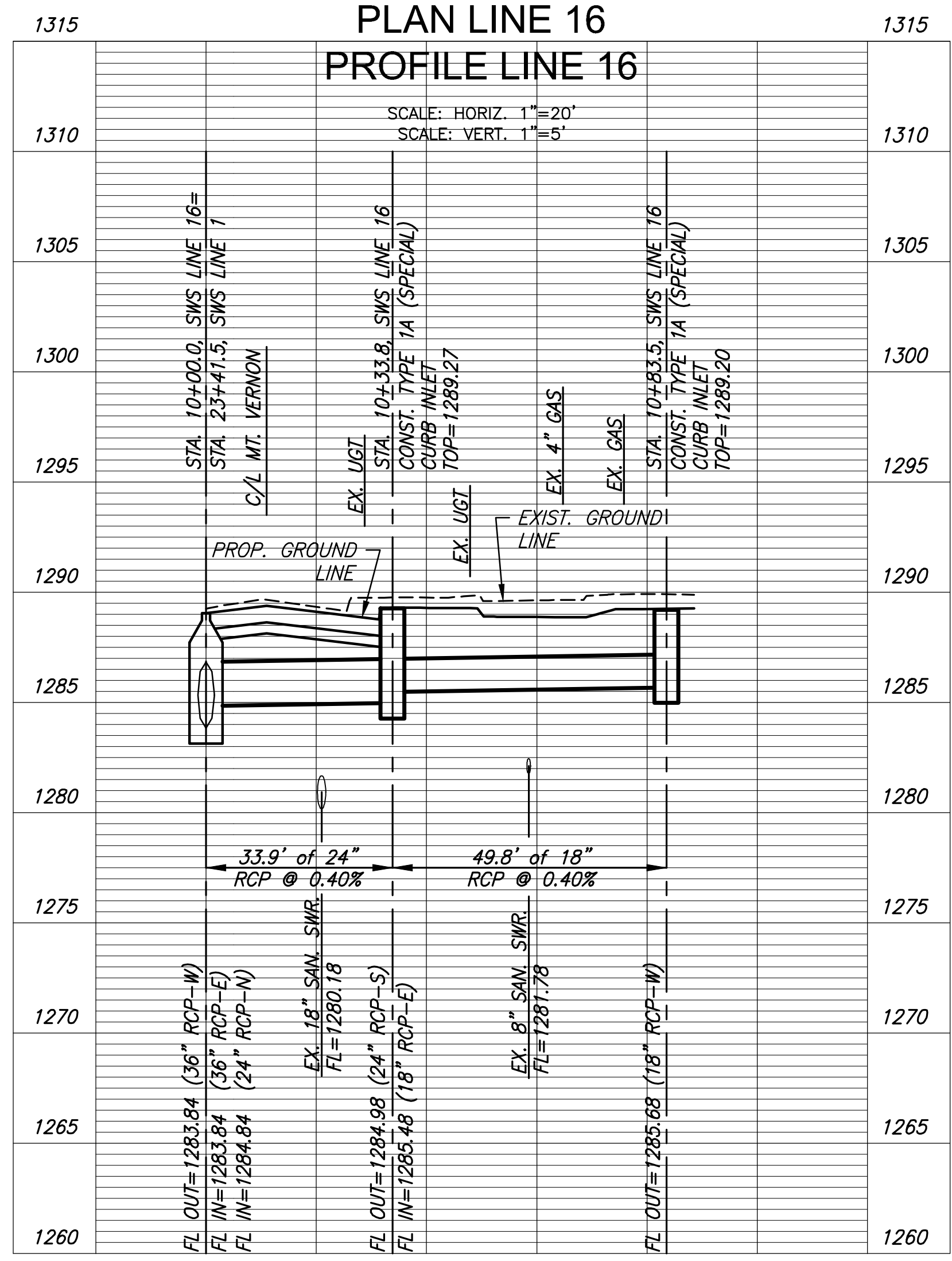
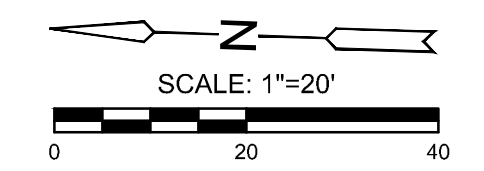


STA. 10+33.8, SWS LINE 16  
ST. STA. 63+34.57, 22.83' LT.  
INSTALL TYPE 1A (SPECIAL)  
CURB INLET  
L=10', W=3'  
INLET TOP=1289.27  
SEE SH. NO.

(16A)

STA. 10+83.5, SWS LINE 16  
ST. STA. 63+84.28, 22.83' LT.  
INSTALL TYPE 1A (SPECIAL)  
CURB INLET  
L=10', W=3'  
INLET TOP=1289.20  
SEE SH. NO.

(16B)



PLAN LINE 16  
PROFILE LINE 16

SCALE: HORIZ. 1"=20'  
SCALE: VERT. 1"=5'

33.9' of 24"  
RCP @ 0.40%

49.8' of 18"  
RCP @ 0.40%

FL OUT=1283.64 (36" RCP-W)  
FL IN=1283.64 (36" RCP-E)  
FL IN=1284.64 (24" RCP-N)  
EX. 18" SAN. SWR  
FL=1280.18

FL OUT=1284.98 (24" RCP-S)  
FL IN=1285.48 (18" RCP-E)

STREET IMPROVEMENTS FOR  
**MT. VERNON IMPROVEMENTS**  
BROADWAY TO SOUTHEAST BLVD.

©2019  
MKEC Engineering  
All Rights Reserved  
www.mkec.com  
These drawings and their contents, including, but not limited to, all concepts, designs, & ideas are the exclusive property of MKEC Engineering (MKEC), and may not be used or reproduced in any way without the express consent of MKEC.

STORM SEWER  
LINE 14 & 16

PROJECT NO.	87 N-0660-01
DATE	8/19/2019
SCALE	1"=20'
DESIGNED	JRA
DRAWN	WNJ
CHECKED	JRA

NO.	REVISION	DATE

SHEET NO.

29 OF 198