

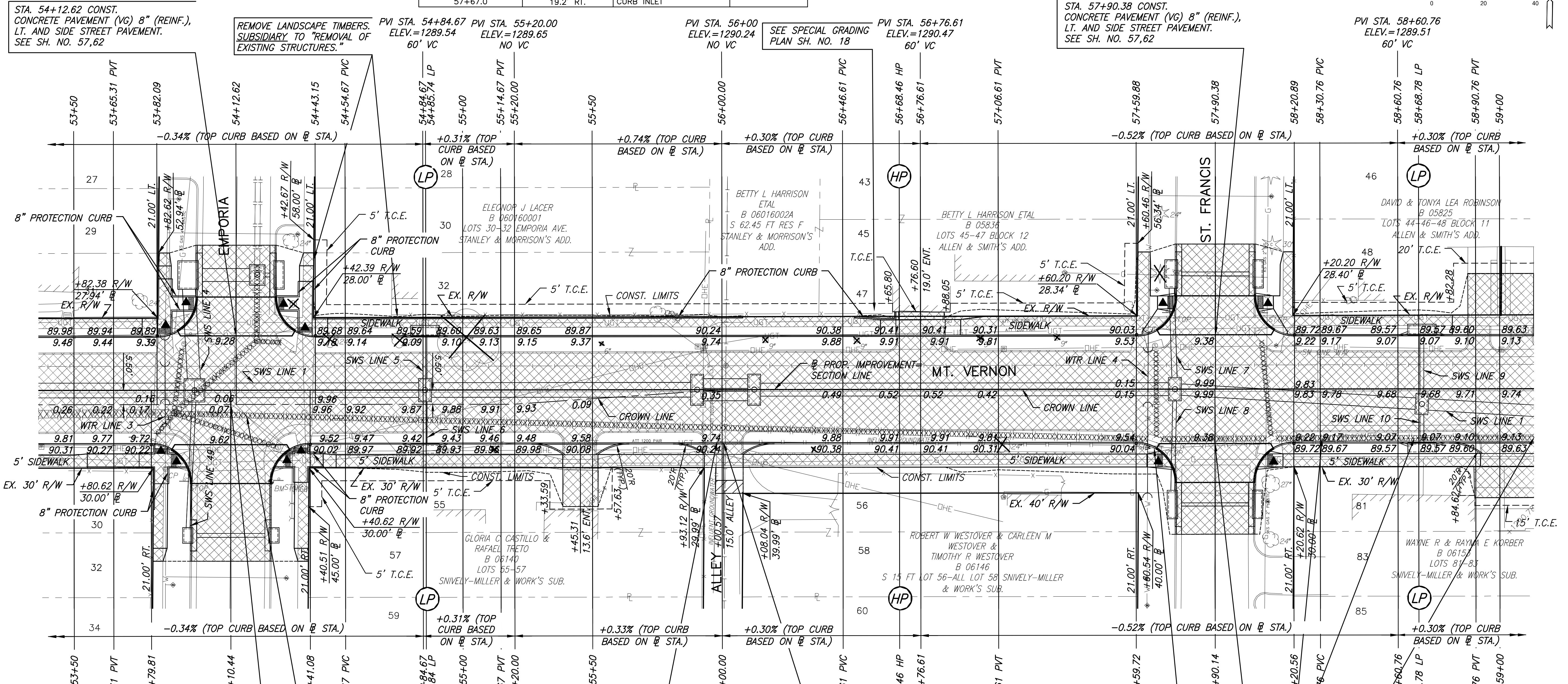
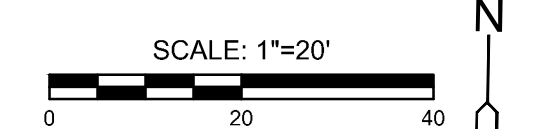
PLOTTED: Friday, August 23, 2019 @ 03:09PM

REMOVAL OF EXISTING PIPES AND STRUCTURES			
STATION	OFFSET	ITEM	REMARKS
53+50.0 TO 53+88.6	8.9' RT.	38.6' OF 36" RCP	
53+78.8	17.6' RT.	CURB INLET	
53+78.8 TO 53+88.6	17.6'-8.9' RT.	10.6' OF 12" RCP	
53+85.2	12.8' RT.-19.4' LT.	32.4' OF 8" PIPE	
53+88.6	8.9' RT.	STORM SEWER MH	
53+88.6 TO 53+92.6	8.9' RT.-17.9' LT.	25.2' OF 18" RCP	
53+92.6	17.9' LT.	CURB INLET	
53+88.6 TO 54+20.5	8.9' RT.-19.0' LT	42.4' OF 24" RCP	

REMOVAL OF EXISTING PIPES AND STRUCTURES			
STATION	OFFSET	ITEM	REMARKS
53+88.6 TO 54+28.7	8.9'-22.1' RT.	41.2' OF 18" RCP	
53+88.6 TO 57+66.97	8.9' RT.-19.2' RT	375.7' OF 24" RCP	
54+20.5	19.0' LT.	STORM SEWER MH	
54+20.5 TO 54+20.8	19.0'-48.0' LT.	29.0' OF 24" RCP	
54+28.7	22.1' RT.	CURB INLET	
54+20.5 TO 54+32.0	19.0'-17.8' LT.	9.6' OF 15" RCP	
54+32.0	17.8' LT.	CURB INLET	
57+64.1	40.1' RT.-21.9' LT.	62.3' OF 8" PIPE	
57+67.0	19.2' RT.	CURB INLET	

REMOVAL OF EXISTING PIPES AND STRUCTURES			
STATION	OFFSET	ITEM	REMARKS
57+67.0	C/L	33.0' OF 15" RCP	
57+67.0	16.8' LT.	CURB INLET	
57+67.0 TO 58+11.6	19.1' RT.	39.8' OF 24" RCP	
58+09.2	19.5' LT.	CURB INLET	
58+09.2 TO 58+11.6	19.5' LT.-19.1' RT.	36.2' OF 15" RCP	
58+11.6	19.1' RT.	CURB INLET	
58+11.6 TO 59+00.0	18.9' RT.	86.0' OF 24" RCP	

STATE	PROJECT NO.	YEAR	SHEET NO.	TOTAL SHEETS
KANSAS	87 N-0660-01	2019	7	198



STA. 54+12.62 CONST. CONCRETE PAVEMENT (VG) 8" (REINF.), LT. AND SIDE STREET PAVEMENT. SEE SH. NO. 57,62

REMOVE LANDSCAPE TIMBERS, SUBSIDIARY TO "REMOVAL OF EXISTING STRUCTURES."

SEE SPECIAL GRADING PLAN SH. NO. 18

STA. 57+90.38 CONST. CONCRETE PAVEMENT (VG) 8" (REINF.), LT. AND SIDE STREET PAVEMENT. SEE SH. NO. 57,62

STA. 54+10.44 CONST. CONCRETE PAVEMENT (VG) 8" (REINF.), RT. AND SIDE STREET PAVEMENT. SEE SH. NO. 57,62

REMOVE EXISTING TRAFFIC SIGNAL AND APPURTENANCES INCLUDING POLES THAT DO NOT BELONG TO WESTAR. DELIVER SIGNAL HEAD AND CONTROLLER TO 1801 S. MCLEAN. REMOVAL IS PAID FOR AS "TRAFFIC SIGNAL, REMOVED".

CAUTION!!! GROUNDWATER INFLUENT LINE. SEE GENERAL NOTE ON SH. 2. LINE LOCATION WITH RESPECT TO EXISTING INLET IS UNKNOWN.

CAUTION!!! GROUNDWATER INFLUENT LINE. SEE GENERAL NOTE ON SH. 2.

UTILITY ADJUSTMENTS				
STATION	OFFSET	EXIST. ELEV.	PROP. ELEV.	REMARKS
53+80.47	19.32' RT.	1289.50	1289.76	VALVE BOX ADJUSTMENT
56+01.49	9.22' LT.	1289.57	1290.08	SS MH ADJUSTMENT
57+67.76	38.22' LT.	1290.34	1289.69	METER BOX ADJUSTMENT

PROTECTION CURB				
STATION TO STATION	SIDE	QUANTITY	REMARKS	
STA. 53+55+12 TO STA. 53+93.32	RT.	71.1'	SW CORNER INTERSECTION TOPEKA	
STA. 53+87.41 TO STA. 53+97.09	LT.	34.5'	NW CORNER INTERSECTION TOPEKA	
STA. 54+27.56 TO STA. 54+46.13	RT.	41.0'	SE CORNER INTERSECTION TOPEKA	
STA. 54+28.15 TO STA. 54+47.88	LT.	51.8'	NE CORNER INTERSECTION TOPEKA	
STA. 54+47.88 TO STA. 56+08.06	LT.	160.2'	ALONG R/W	
STA. 56+51.15 TO STA. 56+67.11	LT.	19.0'	AT DRIVE ENTRANCE	

STREET IMPROVEMENTS FOR  
**MT. VERNON IMPROVEMENTS**  
BROADWAY TO SOUTHEAST BLVD.

©2019 MKEC Engineering All Rights Reserved  
These drawings and their contents, including, but not limited to, all concepts, designs, & lists are the exclusive property of MKEC Engineering (MKEC), and may not be used or reproduced in any way without the express consent of MKEC.

PAVING PLANS	
STA. 53+50 TO STA. 59+00	
PROJECT NO.	87 N-0660-01
DATE	8/19/2019
SCALE	1"=20'
DESIGNED	JRA
DRAWN	WNJ
CHECKED	JRA
NO.	REVISION
DATE	
SHEET NO.	
7 OF 198	