

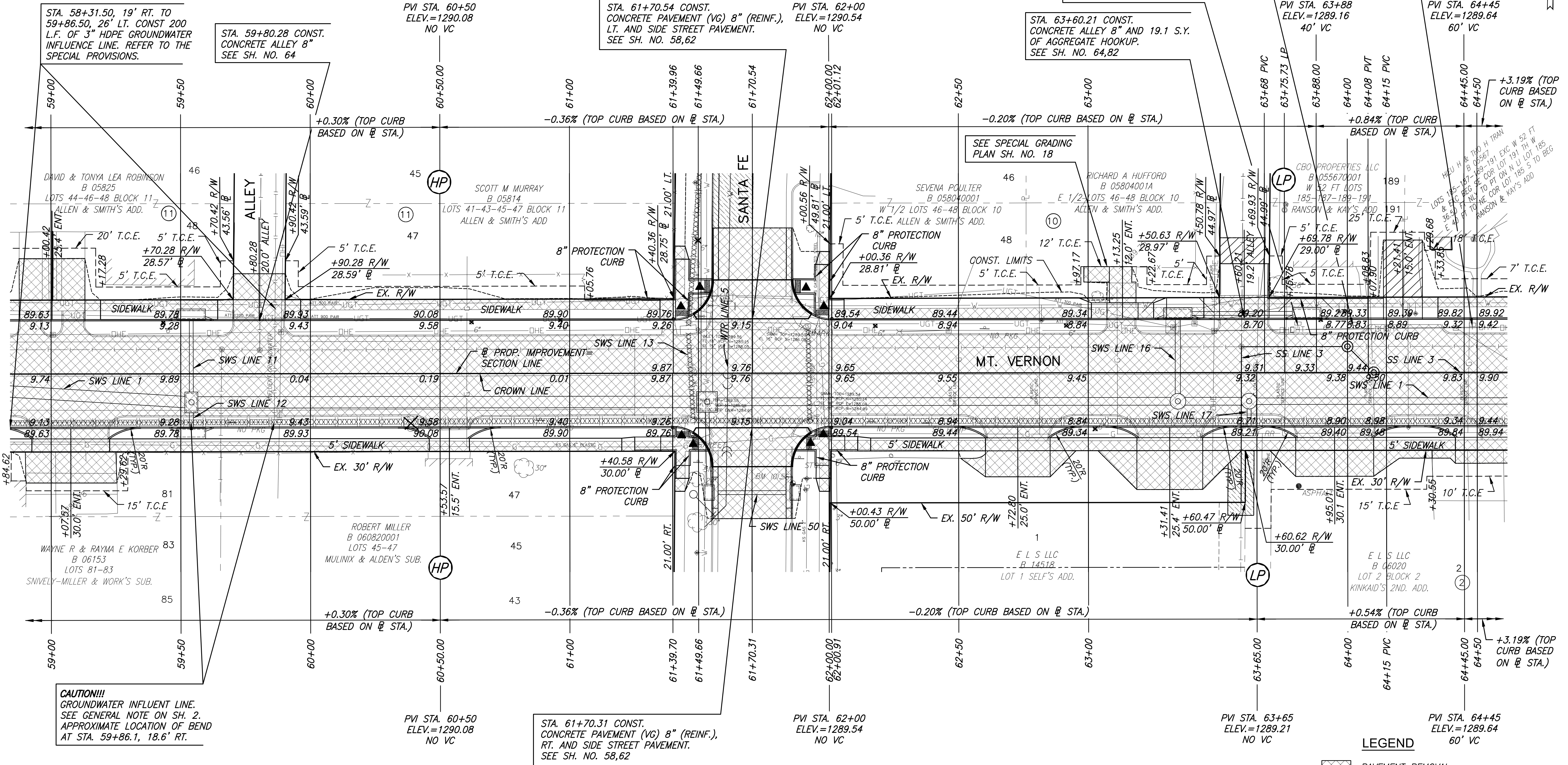
PLOTTED: Friday, August 23, 2019 @ 03:09PM

STATE	PROJECT NO.	YEAR	SHEET NO.	TOTAL SHEETS
KANSAS	87 N-0660-01	2019	8	198



STATION	OFFSET	ITEM	REMARKS
59+00.0 TO 61+47.7	18.2' RT.	247.6' OF 24" RCP	
61+45.8 TO 61+47.7	16.8' LT.-18.2' RT.	32.5' OF 15" VCP	
61+45.8	16.8' LT.	CURB INLET	
61+47.7	18.2' RT.	CURB INLET	
61+45.8 TO 61+54.9	16.8' LT.-142.1' LT.	121.3' OF 18" VCP	
61+52.0	59.3' RT.-185.7' LT.	232' OF 8" PIPE	
61+54.9	142.1' LT.	CURB INLET	
61+54.9 TO 61+88.1	142.1' LT.	30.9' OF 15" VCP	

STATION	OFFSET	ITEM	REMARKS
61+88.1	141.8' LT.	CURB INLET	
61+47.7 TO 61+92.4	18.2-18.6' RT	43.5' OF 21" RCP	
61+91.9	18.3' LT	CURB INLET	
61+91.9 TO 61+92.4	18.3' LT.-18.6' RT.	34.0' OF 15" RCP	
61+92.4	18.6' RT.	CURB INLET	
61+92.4 TO 64+50.0	18.6'-18.8' RT.	256.3' OF 21" RCP	
63+23.9 TO 63+45.1	26.4' LT.	27.3' OF 8" PIPE	
63+76.3 TO 63+92.2	26.5' LT.	21.1' OF 8" PIPE	



STATION	OFFSET	EXIST. ELEV.	PROP. ELEV.	REMARKS
59+65.81	9.43' LT.	1289.65	1289.65	SS MH ADJUSTMENT
59+80.46	9.14' LT.	1289.58	1289.71	SS MH ADJUSTMENT
62+81.97	20.24' LT.	1289.98		WATER METER RELOCATE
63+59.13	10.01' LT.	1289.21	1289.03	SS MH ADJUSTMENT
63+96.80	23.41' LT.	1289.88	1289.30	METER BOX ADJUSTMENT
63+98.99	23.20' LT.	1290.03	1289.31	METER BOX ADJUSTMENT
64+23.49	21.04' RT.	1289.57		WATER METER RELOCATE
64+23.89	22.34' LT.	1289.56	1289.13	METER BOX ADJUSTMENT
64+26.25	22.70' LT.	1289.55	1289.17	METER BOX ADJUSTMENT

STATION TO STATION	SIDE	QUANTITY	REMARKS
STA. 61+05.94 TO STA. 61+34.85	LT.	28.9'	ALONG R/W
STA. 61+25.08 TO STA. 61+46.58	RT.	54.9'	SW CORNER INTERSECTION SANTA FE
STA. 61+34.85 TO STA. 61+54.96	LT.	55.9'	NW CORNER INTERSECTION SANTA FE
STA. 61+86.12 TO STA. 62+05.85	LT.	50.8'	NE CORNER INTERSECTION SANTA FE
STA. 62+04.58 TO STA. 62+11.08	RT.	51.3'	SE CORNER INTERSECTION SANTA FE
STA. 63+69.27 TO STA. 63+75.78	LT.	20.0'	AT DRIVE ENTRANCE
STA. 63+75.78 TO STA. 64+07.90	LT.	32.1'	ALONG R/W
STA. 64+07.90 TO STA. 64+13.90	LT.	6.0'	AT DRIVE ENTRANCE

**LEGEND**

- PAVEMENT REMOVAL
- CONSTRUCT WHEELCHAIR RAMP SEE SH. NO. 68
- AGGREGATE HOOKUP
- BRICK PAVERS
- PAVEMENT REMOVED AND REPLACED
- 8" SIDEWALK
- STORM SEWER REMOVAL
- TREE REMOVAL
- CURB HEIGHT TRANSITION

**STREET IMPROVEMENTS FOR**  
**MT. VERNON IMPROVEMENTS**  
**BROADWAY TO SOUTHEAST BLVD.**

©2019 MKEC Engineering All Rights Reserved  
 These drawings and their contents, including, but not limited to, all concepts, designs, & ideas are the exclusive property of MKEC Engineering (MKEC), and may not be used or reproduced in any way without the express consent of MKEC.

<b>PAVING PLANS</b>	
STA. 59+00 TO STA. 64+50	
PROJECT NO.	87 N-0660-01
DATE	8/19/2019
SCALE	1"=20'
DESIGNED	JRA
DRAWN	WNJ
CHECKED	JRA
NO.	REVISION
DATE	
SHEET NO. 8 OF 198	