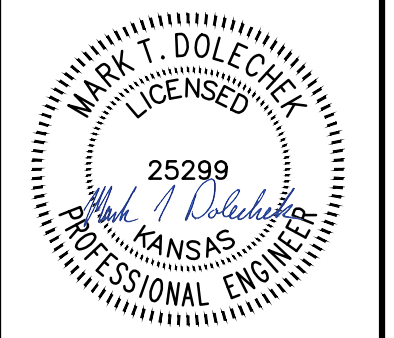


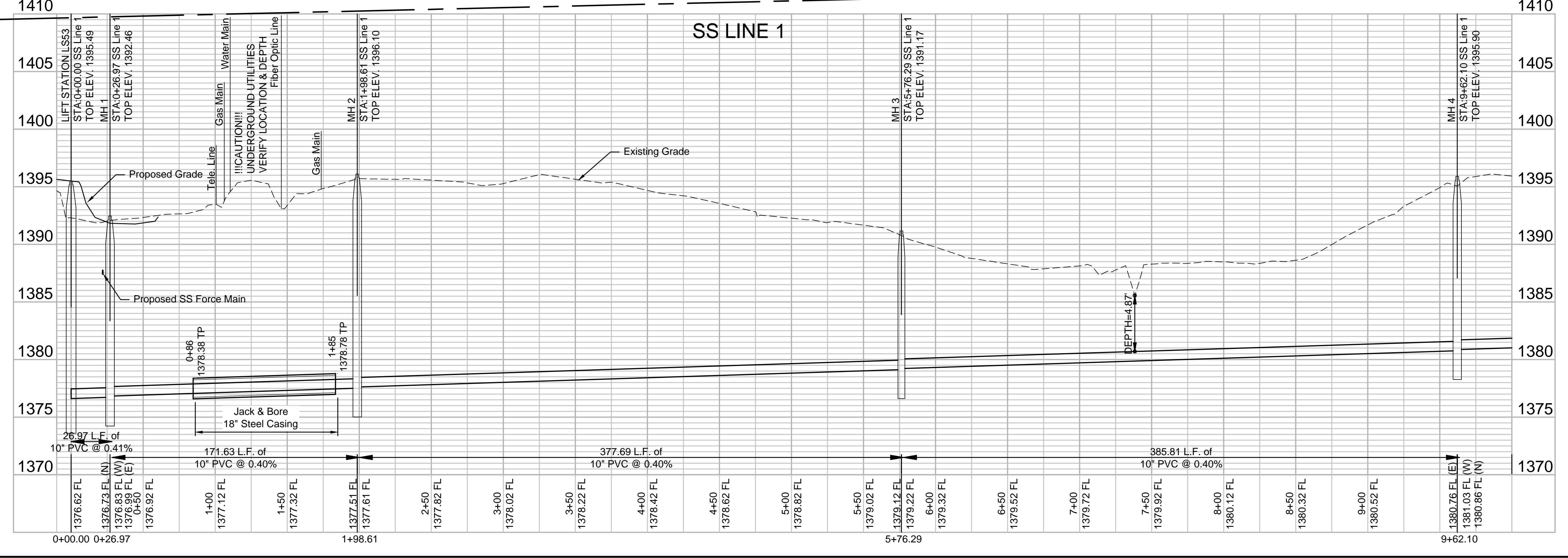
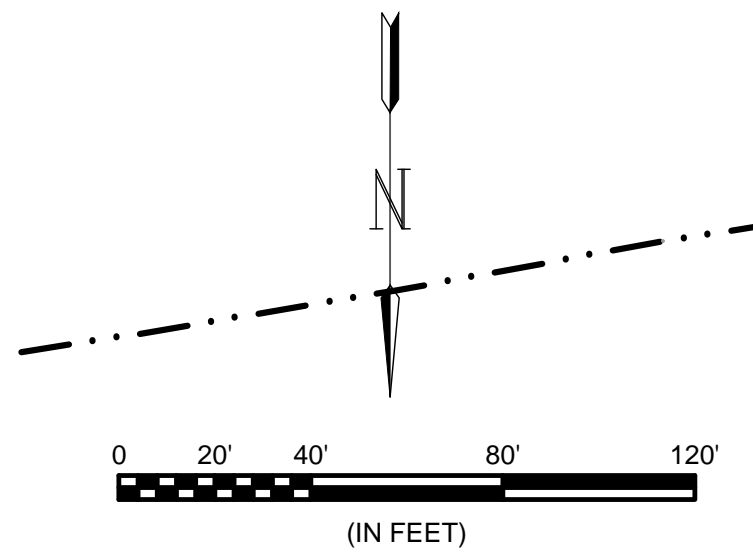
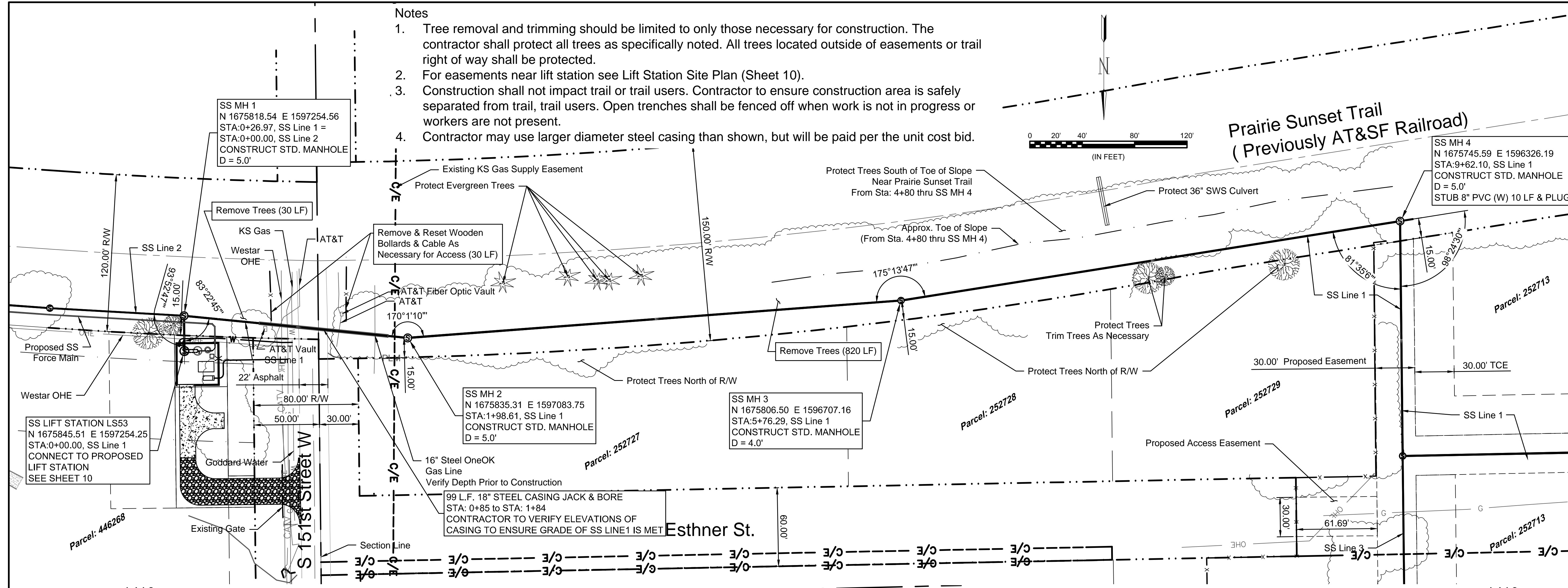


© 2018 GARVER, LLC  
 THIS DOCUMENT, ALONG WITH THE IDEAS AND DESIGNS CONVEYED HEREIN, SHALL BE CONSIDERED INSTRUMENTS OF PROFESSIONAL SERVICE AND ARE PROPERTY OF GARVER, LLC. ANY USE, REPRODUCTION, OR DISTRIBUTION OF THIS DOCUMENT, ALONG WITH THE IDEAS AND DESIGNS CONTAINED HEREIN, IS PROHIBITED UNLESS AUTHORIZED IN WRITING BY GARVER, LLC OR EXPLICITLY ALLOWED IN THE GOVERNING PROFESSIONAL SERVICES AGREEMENT FOR THIS WORK.



Digitally Signed 11/19/2019

- Notes
1. Tree removal and trimming should be limited to only those necessary for construction. The contractor shall protect all trees as specifically noted. All trees located outside of easements or trail right of way shall be protected.
  2. For easements near lift station see Lift Station Site Plan (Sheet 10).
  3. Construction shall not impact trail or trail users. Contractor to ensure construction area is safely separated from trail, trail users. Open trenches shall be fenced off when work is not in progress or workers are not present.
  4. Contractor may use larger diameter steel casing than shown, but will be paid per the unit cost bid.



File: L:\2017\17264967 - LS 53 Replacement No. 1\Drawings\C3D\Plan Sheets\SS Line 1 - (1).dwg Last Save: 11/19/2019 7:53 AM Last saved by: MTDolechek  
 Last plotted by: Dolechek, Mark T. Plot Style: --- Plot Scale: 1:2,584.9 Plot Date: 11/19/2019 8:41 AM Plotter used: None

REV.	DATE	DESCRIPTION	BY

CITY OF WICHITA  
 WICHITA, KANSAS

Consolidation of Lift Stations  
 Near 151st St. & W. Kellogg

SS Line 1 (1 of 3)

JOB NO.: 17264967  
 DATE: NOV. 2019  
 DESIGNED BY: MTD  
 DRAWN BY: MTD

BAR IS ONE INCH ON ORIGINAL DRAWING  
 IF NOT ONE INCH ON THIS SHEET, ADJUST SCALES ACCORDINGLY.

DRAWING NUMBER

SHEET NUMBER **2** OF **36**