



© 2018 GARVER, LLC  
 THIS DOCUMENT, ALONG WITH THE IDEAS AND DESIGNS CONVEYED HEREIN, SHALL BE CONSIDERED INSTRUMENTS OF PROFESSIONAL SERVICE AND ARE PROPERTY OF GARVER, LLC. ANY USE, REPRODUCTION, OR DISTRIBUTION OF THIS DOCUMENT, ALONG WITH THE IDEAS AND DESIGN CONTAINED HEREIN, IS PROHIBITED UNLESS AUTHORIZED IN WRITING BY GARVER, LLC OR EXPLICITLY ALLOWED IN THE GOVERNING PROFESSIONAL SERVICES AGREEMENT FOR THIS WORK.



Digitally Signed 11/18/2019

REV.	DATE	DESCRIPTION	BY



CITY OF WICHITA  
 WICHITA, KANSAS  
 Consolidation of Lift Stations  
 Near 151st St. & W. Kellogg

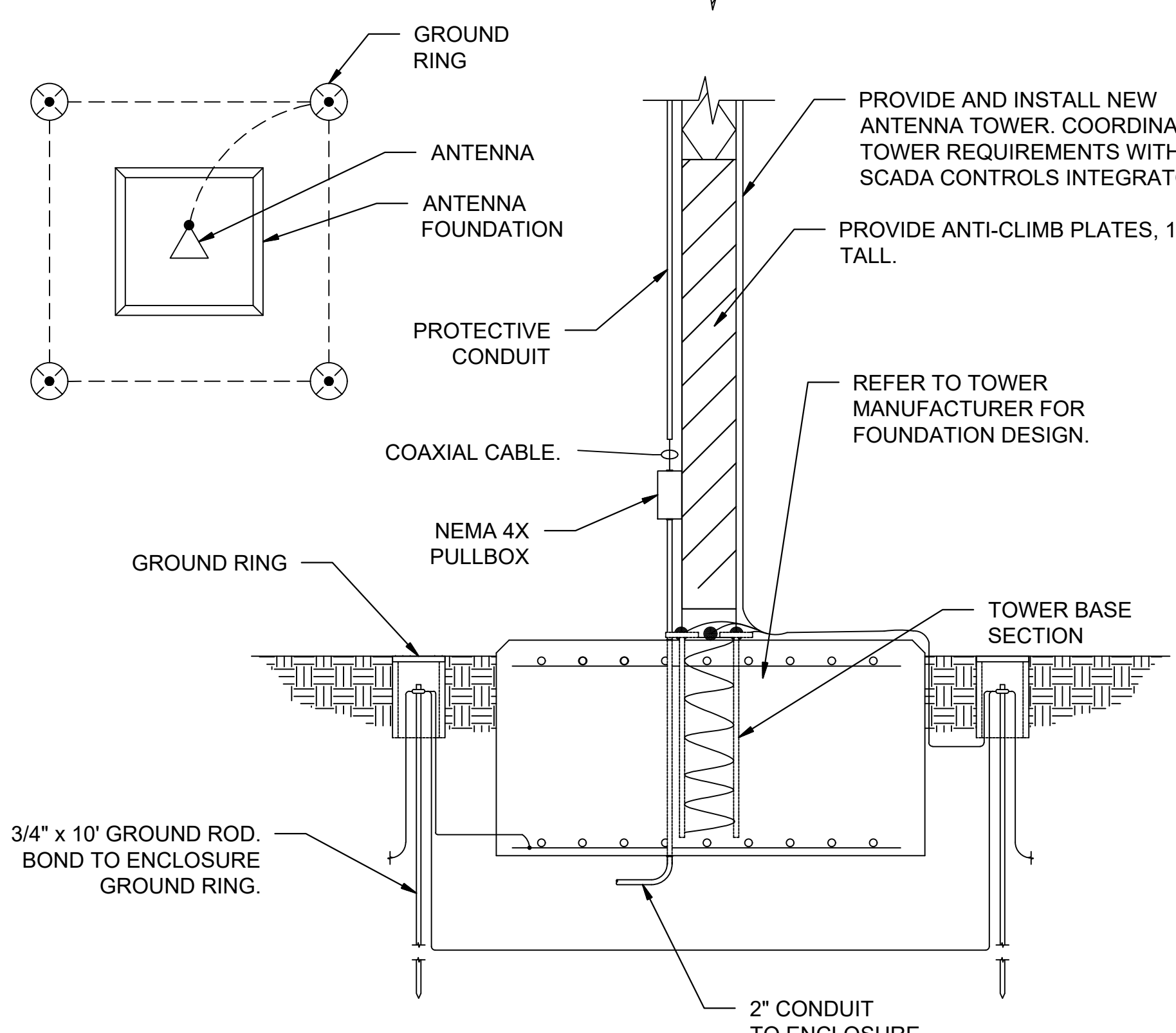
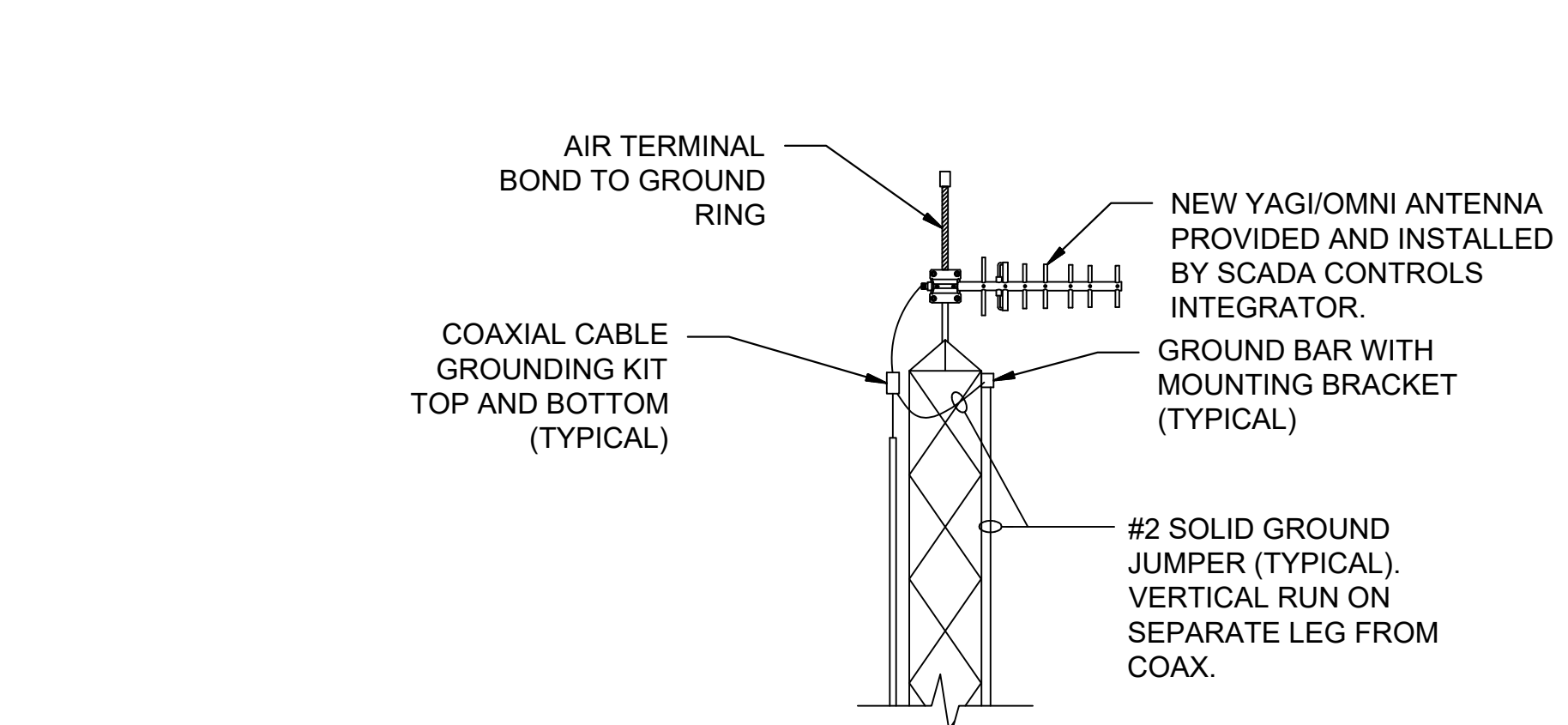
**ELECTRICAL DETAILS III**

JOB NO.: 17264967  
 DATE: NOV. 2019  
 DESIGNED BY: SAH  
 DRAWN BY: SAH

BAR IS ONE INCH ON ORIGINAL DRAWING  
 IF NOT ONE INCH ON THIS SHEET, ADJUST SCALES ACCORDINGLY.

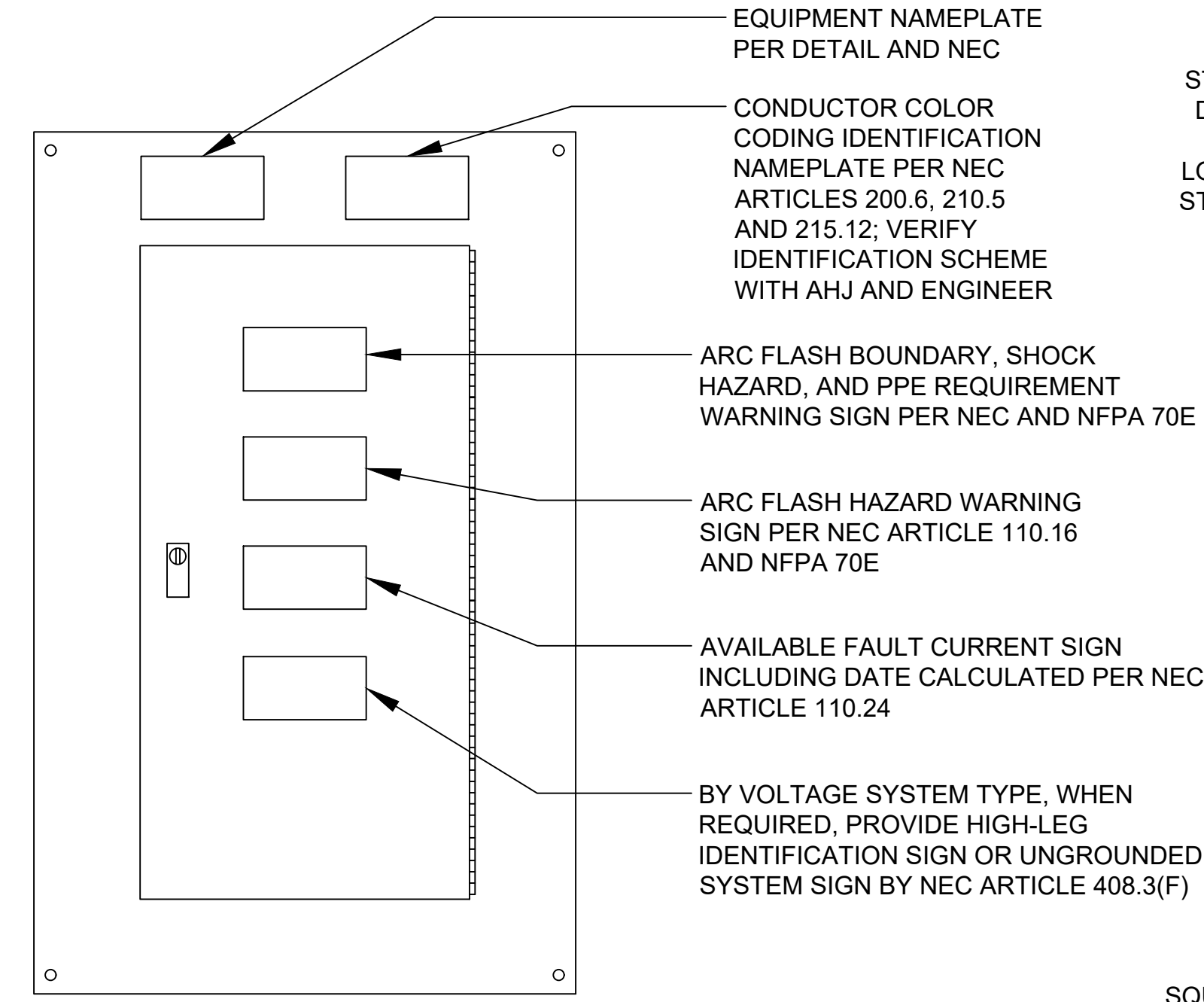
DRAWING NUMBER  
**E7**

SHEET NUMBER **20** OF **36**



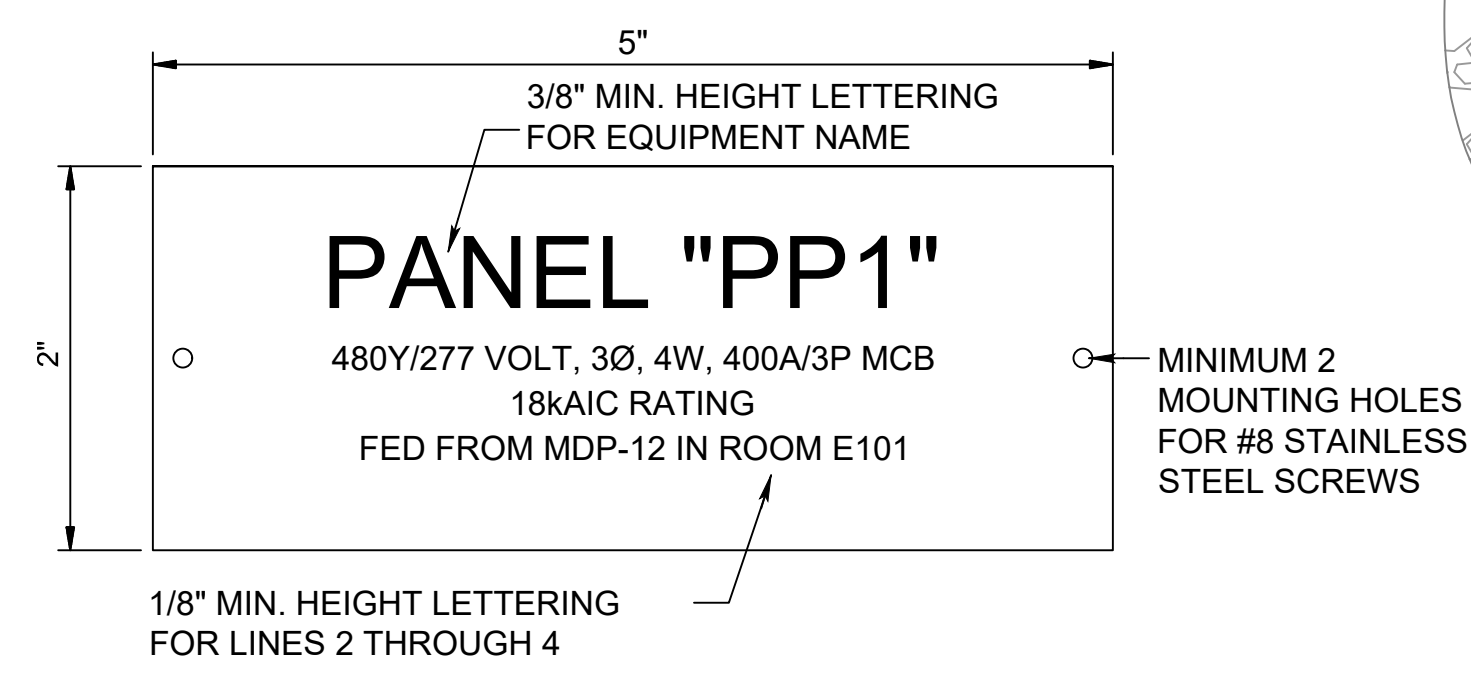
NOTE:  
 CONTRACTOR TO INSTALL SELF-SUPPORTING TOWER AND STRUCTURAL BASE PER MANUFACTURER'S DESIGN. REFER TO SPECIFICATIONS FOR REQUIREMENT.

**1**  
 E7 **TYPICAL ANTENNA TOWER DETAIL**  
 SCALE: NONE



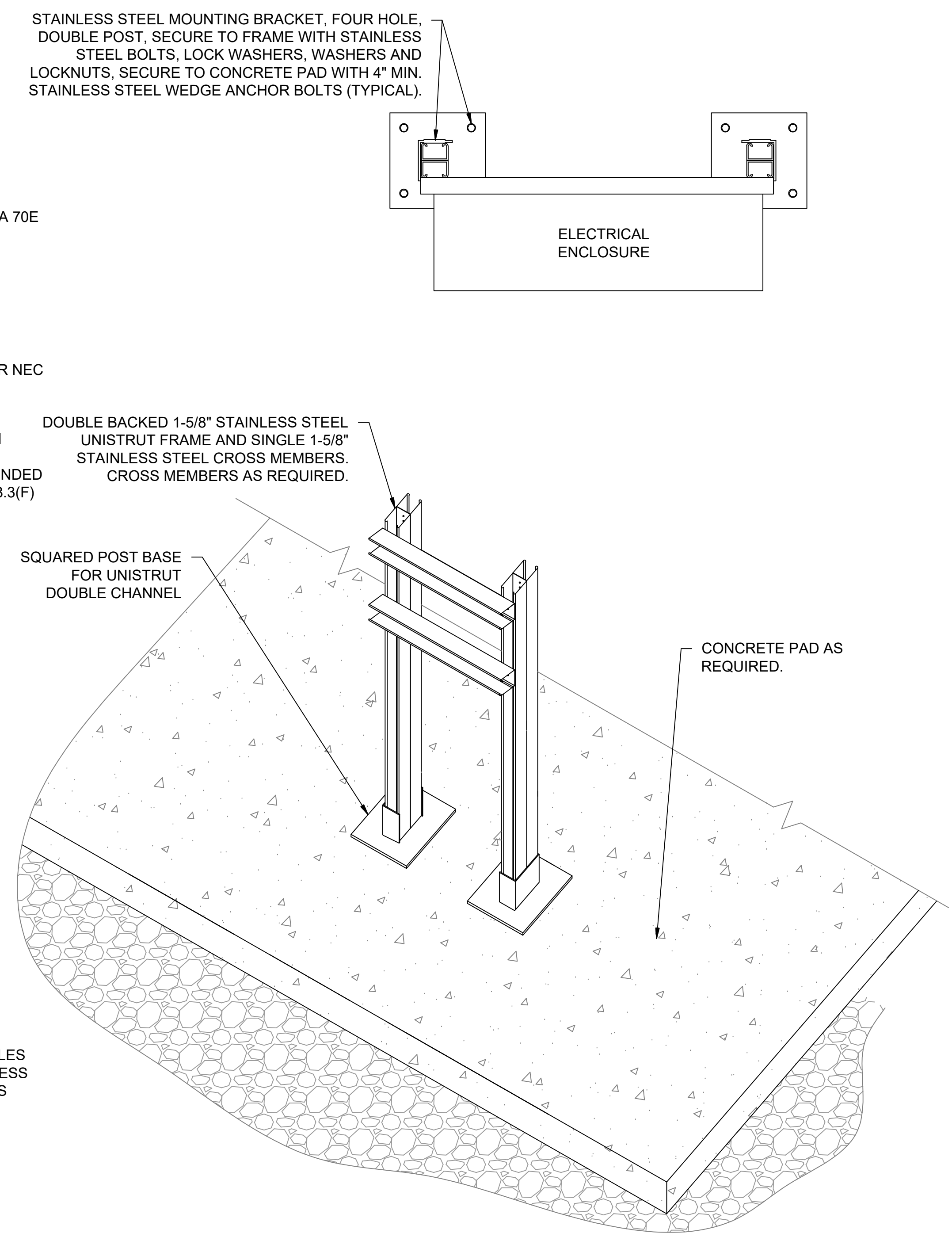
**PANEL FRONT VIEW**  
 SCALE: NOT TO SCALE

- NOTES:
1. INSTALL ALL NAMEPLATES AND WARNING SIGNS IN ACCORDANCE WITH NEC AND NFPA 70E REQUIREMENTS.
  2. INSTALL NAMEPLATES AND WARNING SIGNS ON ALL ELECTRICAL EQUIPMENT, INCLUDING BUT NOT LIMITED TO, SWITCHBOARDS, PANELBOARDS, TRANSFORMERS, SWITCHES, CONTROL PANELS AND MOTOR CONTROL CENTERS.
  3. EXTERIOR EQUIPMENT SHALL HAVE WEATHER-RESISTANT, NON-FADING NAMEPLATES AND SIGNAGE.
  4. INSTALL CIRCUIT DIRECTORY AND/OR CIRCUIT IDENTIFICATION FOR PROPER FIELD IDENTIFICATION.
  5. REFER TO SPECIFICATIONS FOR ADDITIONAL REQUIREMENTS.



- EQUIPMENT NAMEPLATE NOTES:**
1. INSTALL 2-PLEX ACRYLIC, WHITE ON BLACK CORE, 5"x2" TILE, TEXT LINES AS INDICATED, CUSTOM ENGRAVED NAME PLATES.
  2. MOUNT WITH STAINLESS STEEL SCREWS.
  3. SEAL SCREW HOLES WITH SILICONE RUBBER.
  4. NAMEPLATE INFORMATION SHALL INCLUDE:
    - A. IDENTIFICATION NAME.
    - B. VOLTAGE SYSTEM, AND AMPACITY RATING AND TYPE.
    - C. EQUIPMENT AIC RATING.
    - D. FEEDER SOURCE OF SUPPLY DESCRIPTION.

**2**  
 E7 **TYPICAL ENGRAVED NAMEPLATE DETAIL**  
 SCALE: NONE



1. ALL BOLTS, NUTS, WASHERS, ANCHORS, PLATES, AND OTHER MOUNTING STEMS SHALL BE CORROSION RESISTANT, STAINLESS STEEL.
2. UTILIZE 5/16" STAINLESS STEEL WEDGE ANCHORS AS REQUIRED.
3. OMIT PAD WHERE NOT SHOWN.

**3**  
 E7 **UNISTRUT STAND DETAIL (TYP.)**  
 SCALE: NONE

File: L:\2017\17264967 - LS 53 Replacement No. 1\Drawings\KLP5-E5, E6, E7, E8.dwg Last Save: 11/6/2019 3:24 PM Last saved by: SAHaley  
 Last plotted by: Haydock, Joseph C. Plot Style: AECmono.ctb Plot Scale: 1:0.4265 Plot Date: 11/18/2019 3:22 PM Plotter used: DWG To PDF.pc3