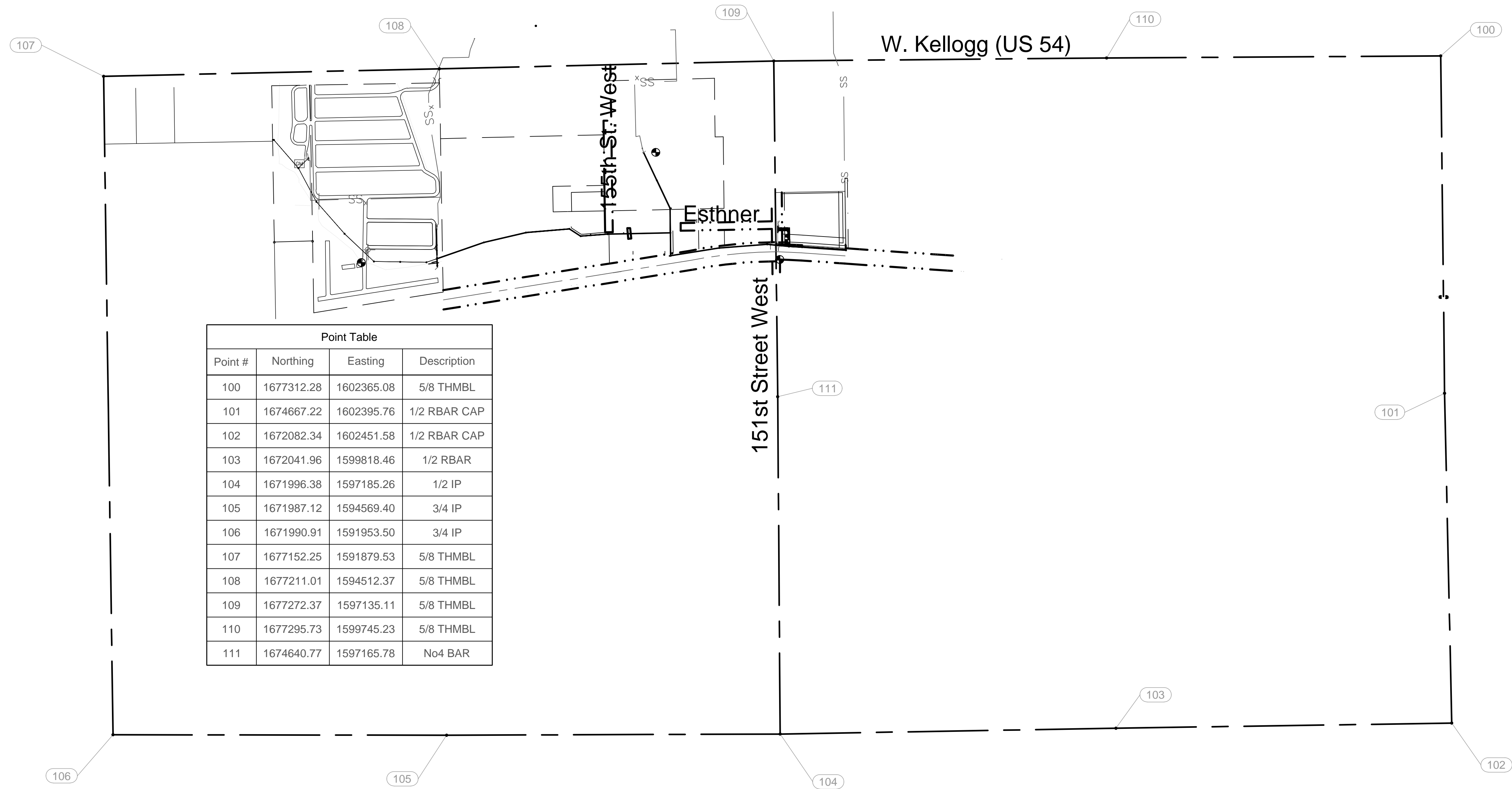


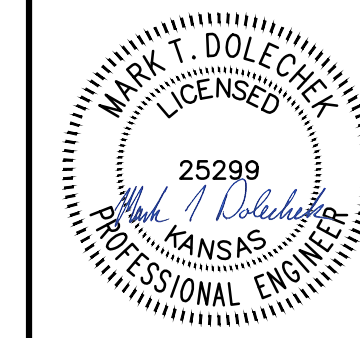
File: L:\2017\17264967 - LS 53 Replacement No. 1\Drawings\C3D\Plan Sheets\Bubble Map.dwg Last Save: 11/19/2019 5:06 PM Last saved by: MTDolechek
 Last plotted by: Dolechek, Mark T. Plot Style: --- Plot Scale: 1:2,584.9 Plot Date: 11/19/2019 8:49 AM Plotter used: None



| Point Table | | | |
|-------------|------------|------------|--------------|
| Point # | Northing | Easting | Description |
| 100 | 1677312.28 | 1602365.08 | 5/8 THMBL |
| 101 | 1674667.22 | 1602395.76 | 1/2 RBAR CAP |
| 102 | 1672082.34 | 1602451.58 | 1/2 RBAR CAP |
| 103 | 1672041.96 | 1599818.46 | 1/2 RBAR |
| 104 | 1671996.38 | 1597185.26 | 1/2 IP |
| 105 | 1671987.12 | 1594569.40 | 3/4 IP |
| 106 | 1671990.91 | 1591953.50 | 3/4 IP |
| 107 | 1677152.25 | 1591879.53 | 5/8 THMBL |
| 108 | 1677211.01 | 1594512.37 | 5/8 THMBL |
| 109 | 1677272.37 | 1597135.11 | 5/8 THMBL |
| 110 | 1677295.73 | 1599745.23 | 5/8 THMBL |
| 111 | 1674640.77 | 1597165.78 | No4 BAR |



© 2019 GARVER, LLC
 THIS DOCUMENT, ALONG WITH THE IDEAS AND DESIGNS CONVEYED HEREIN, SHALL BE CONSIDERED INSTRUMENTS OF PROFESSIONAL SERVICE AND ARE PROPERTY OF GARVER, LLC. ANY USE, REPRODUCTION, OR DISTRIBUTION OF THIS DOCUMENT, ALONG WITH THE IDEAS AND DESIGN CONTAINED HEREIN, IS PROHIBITED UNLESS AUTHORIZED IN WRITING BY GARVER, LLC OR EXPLICITLY ALLOWED IN THE GOVERNING PROFESSIONAL SERVICES AGREEMENT FOR THIS WORK.



Digitally Signed 11/19/2019

| REV. | DATE | DESCRIPTION | BY |
|------|------|-------------|----|
| | | | |



CITY OF WICHITA
 WICHITA, KANSAS
 Consolidation of Lift Stations
 Near 151st St. & W. Kellogg

Bubble Map
 Control Pnts

JOB NO.: 17264967
 DATE: NOV. 2019
 DESIGNED BY: MTD
 DRAWN BY: MTD

BAR IS ONE INCH ON ORIGINAL DRAWING
 0 1"
 IF NOT ONE INCH ON THIS SHEET, ADJUST SCALES ACCORDINGLY.

DRAWING NUMBER

SHEET NUMBER **26 OF 36**