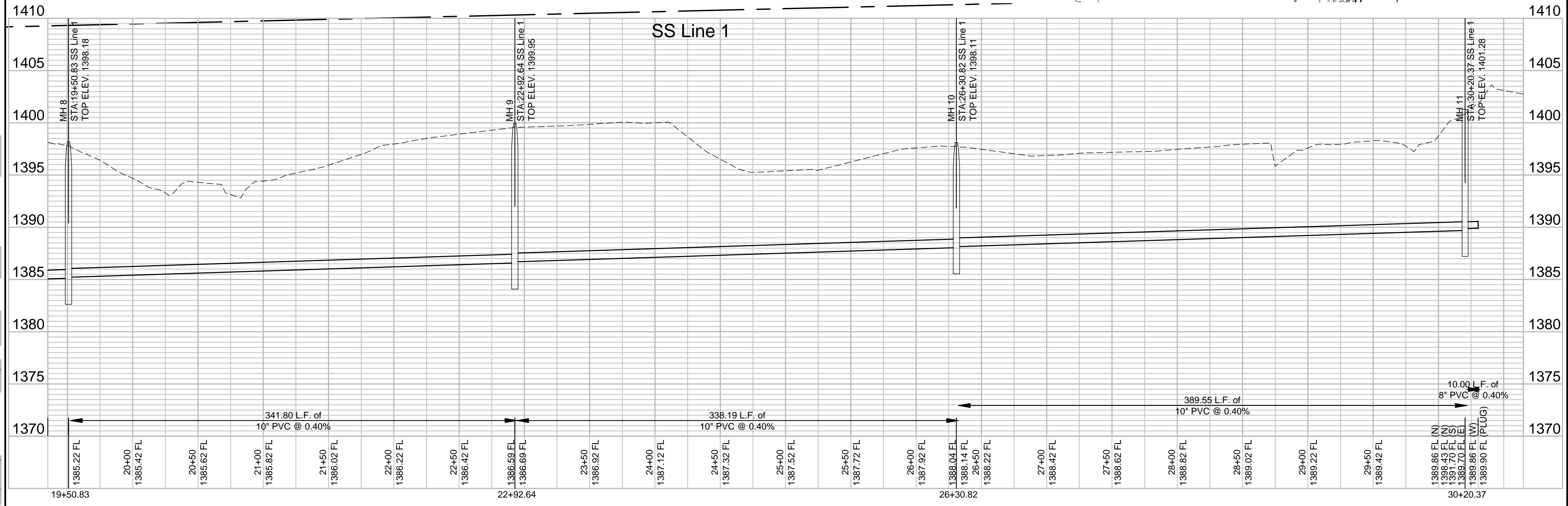
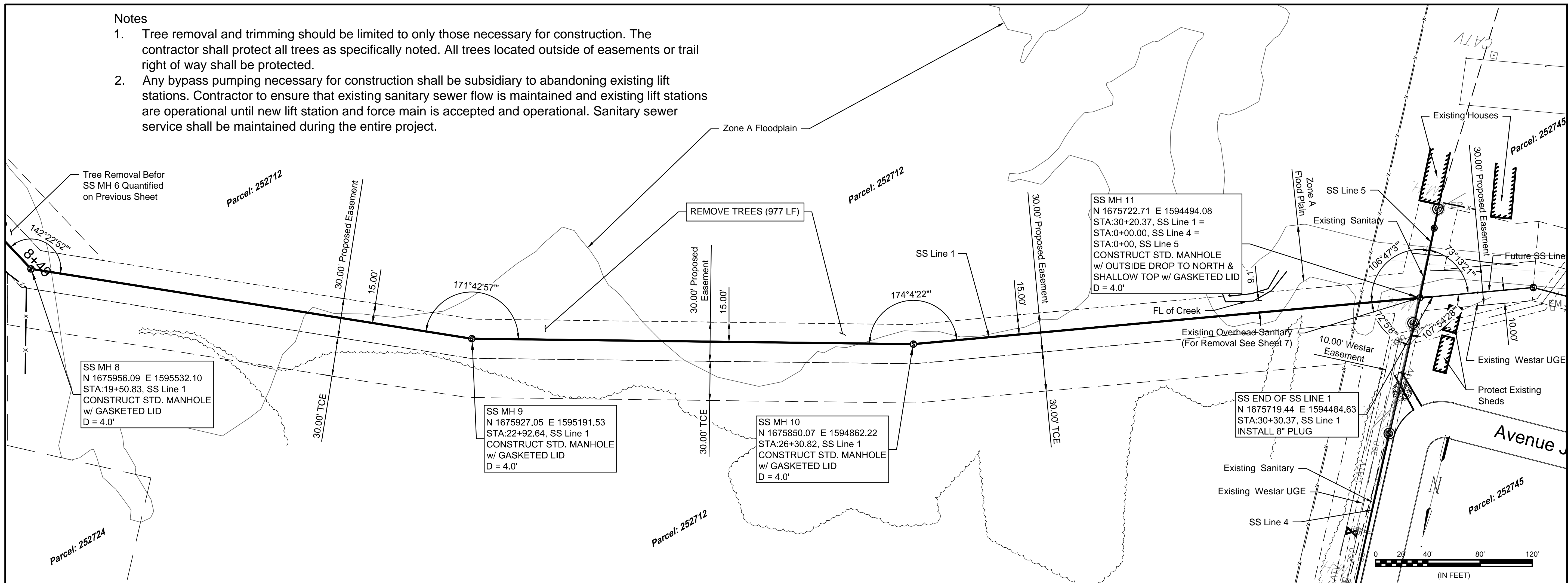
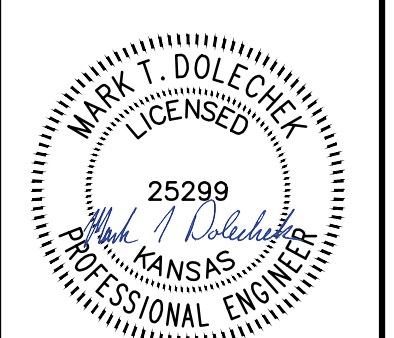


Notes

1. Tree removal and trimming should be limited to only those necessary for construction. The contractor shall protect all trees as specifically noted. All trees located outside of easements or trail right of way shall be protected.
2. Any bypass pumping necessary for construction shall be subsidiary to abandoning existing lift stations. Contractor to ensure that existing sanitary sewer flow is maintained and existing lift stations are operational until new lift station and force main is accepted and operational. Sanitary sewer service shall be maintained during the entire project.



© 2018 GARVER, LLC
THIS DOCUMENT, ALONG WITH THE IDEAS AND DESIGNS CONVEYED HEREIN, SHALL BE CONSIDERED INSTRUMENTS OF PROFESSIONAL SERVICE AND ARE PROPERTY OF GARVER, LLC. ANY USE, REPRODUCTION, OR DISTRIBUTION OF THIS DOCUMENT, ALONG WITH THE IDEAS AND DESIGN CONTAINED HEREIN, IS PROHIBITED UNLESS AUTHORIZED IN WRITING BY GARVER, LLC OR EXPLICITLY ALLOWED IN THE GOVERNING PROFESSIONAL SERVICES AGREEMENT FOR THIS WORK.



Digitally Signed 11/19/2019

REV.	DATE	DESCRIPTION	BY

CITY OF WICHITA
WICHITA, KANSAS
Consolidation of Lift Stations
Near 151st St. & W. Kellogg

SS Line 1 (3 of 3)

JOB NO.: 17264967
DATE: NOV. 2019
DESIGNED BY: MTD
DRAWN BY: MTD

BAR IS ONE INCH ON ORIGINAL DRAWING
IF NOT ONE INCH ON THIS SHEET, ADJUST SCALES ACCORDINGLY.
DRAWING NUMBER

File: L:\2017\17264967 - LS 53 Replacement No. 1\Drawings\C3D\Plan Sheets\SS Line 1 - (3).dwg Last Save: 11/13/2019 2:40 PM Last saved by: MTDolechek
 Last plotted by: Dolechek, Mark T. Plot Style: Plot Style: 1:2,5849 Plot Date: 11/19/2019 8:42 AM Plotter used: None