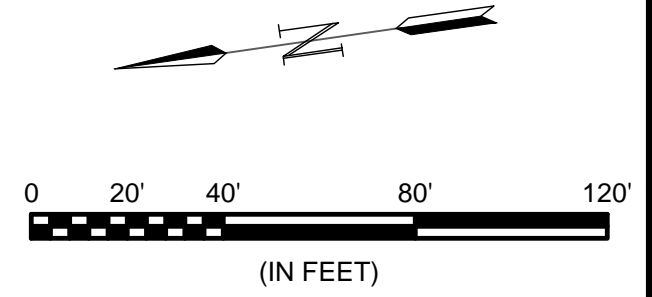
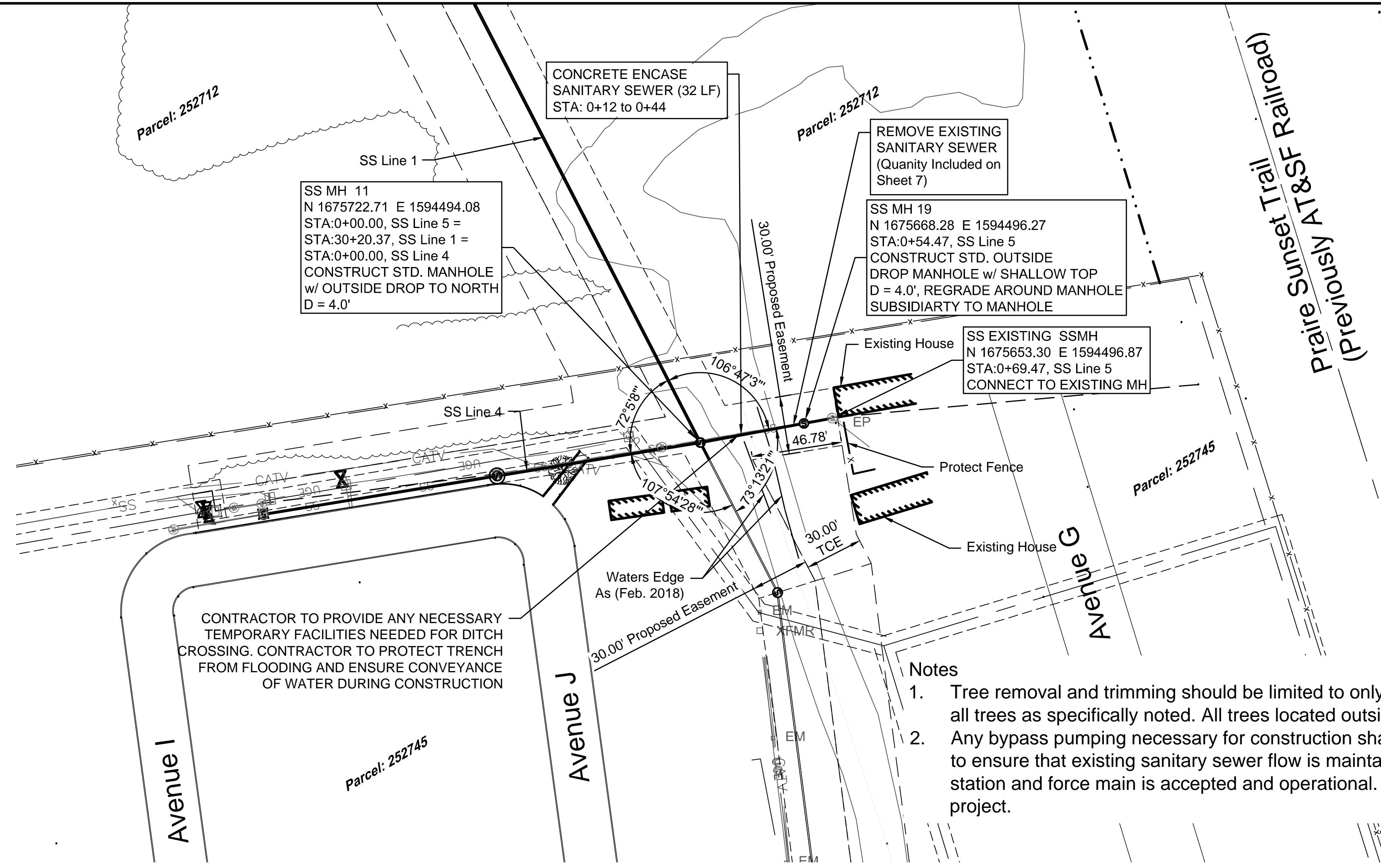
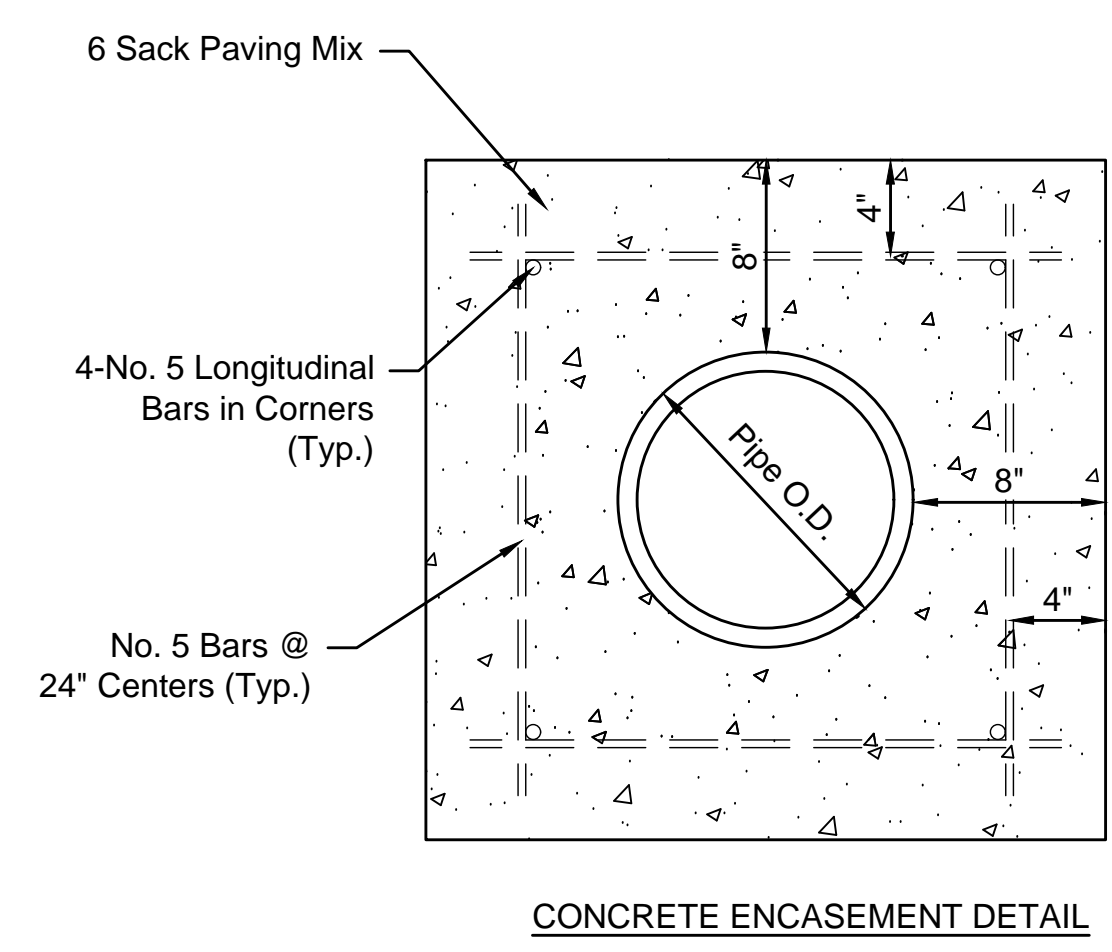
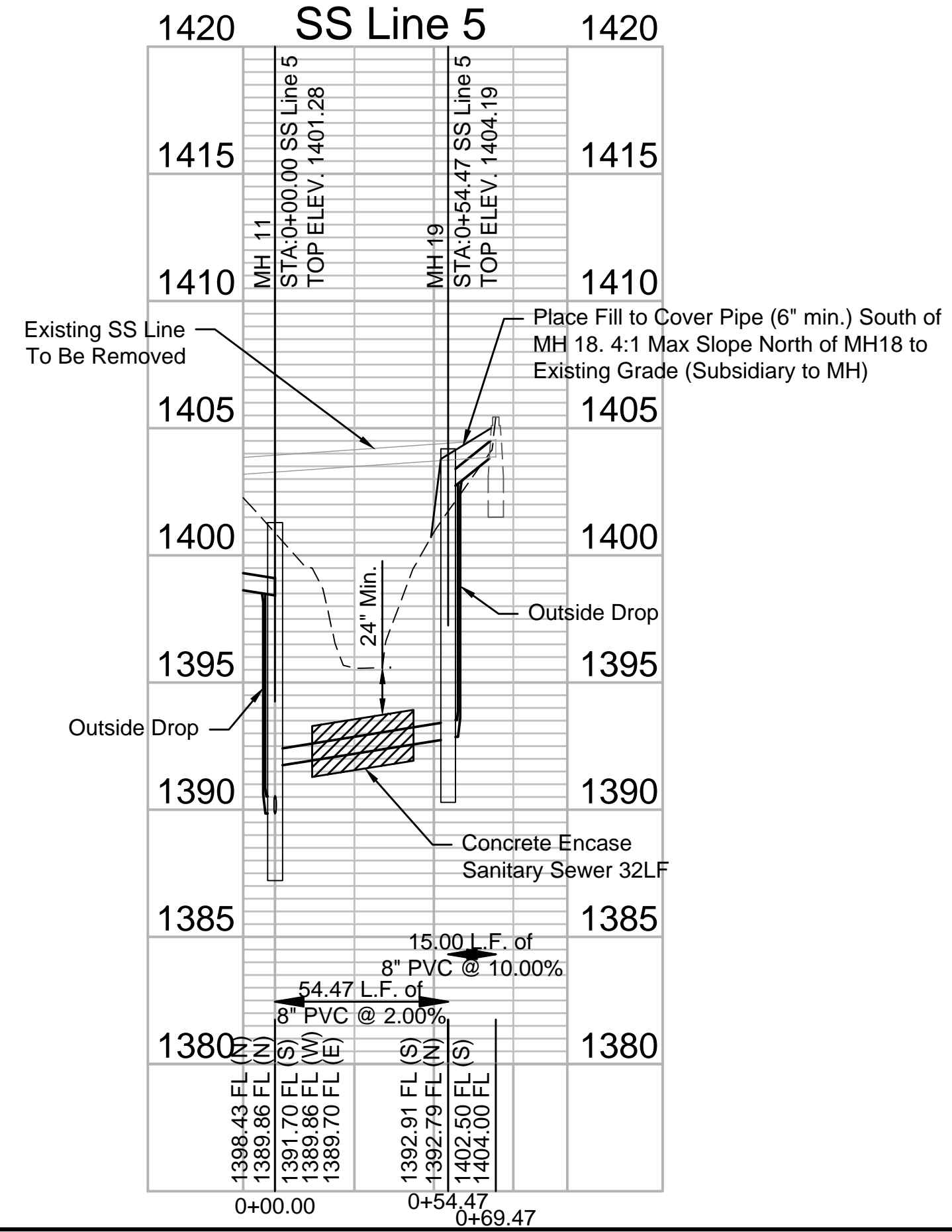


File: L:\2017\17264967 - LS 53 Replacement No. 1\Drawings\C3D\Plan Sheets\SS Line 5 - (1).dwg Last Save: 11/13/2019 2:48 PM Last saved by: MTDolechek
 Last plotted by: Dolechek, Mark T. Plot Style: --- Plot Scale: 1:2.5849 Plot Date: 11/19/2019 8:46 AM Plotter used: None



CONTRACTOR TO PROVIDE ANY NECESSARY
 TEMPORARY FACILITIES NEEDED FOR DITCH
 CROSSING. CONTRACTOR TO PROTECT TRENCH
 FROM FLOODING AND ENSURE CONVEYANCE
 OF WATER DURING CONSTRUCTION

- Notes
1. Tree removal and trimming should be limited to only those necessary for construction. The contractor shall protect all trees as specifically noted. All trees located outside of easements or trail right of way shall be protected.
 2. Any bypass pumping necessary for construction shall be subsidiary to abandoning existing lift stations. Contractor to ensure that existing sanitary sewer flow is maintained and existing lift stations are operational until new lift station and force main is accepted and operational. Sanitary sewer service shall be maintained during the entire project.



GARVER

© 2019 GARVER, LLC
 THIS DOCUMENT, ALONG WITH THE IDEAS AND DESIGNS CONVEYED HEREIN, SHALL BE CONSIDERED INSTRUMENTS OF PROFESSIONAL SERVICE AND ARE PROPERTY OF GARVER, LLC. ANY USE, REPRODUCTION, OR DISTRIBUTION OF THIS DOCUMENT, ALONG WITH THE IDEAS AND DESIGN CONTAINED HEREIN, IS PROHIBITED UNLESS AUTHORIZED IN WRITING BY GARVER, LLC OR EXPLICITLY ALLOWED IN THE GOVERNING PROFESSIONAL SERVICES AGREEMENT FOR THIS WORK.

MARK T. DOLECHEK
 LICENSED
 25299
 KANSAS
 PROFESSIONAL ENGINEER

Digitally Signed 11/19/2019

REV.	DATE	DESCRIPTION	BY

CITY OF WICHITA
 WICHITA, KANSAS

Consolidation of Lift Stations
 Near 151st St. & W. Kellogg

SS Line 5

JOB NO.: 17264967
 DATE: NOV. 2019
 DESIGNED BY: MTD
 DRAWN BY: MTD

BAR IS ONE INCH ON ORIGINAL DRAWING
 IF NOT ONE INCH ON THIS SHEET, ADJUST SCALES ACCORDINGLY.

DRAWING NUMBER

SHEET NUMBER **8** OF **36**