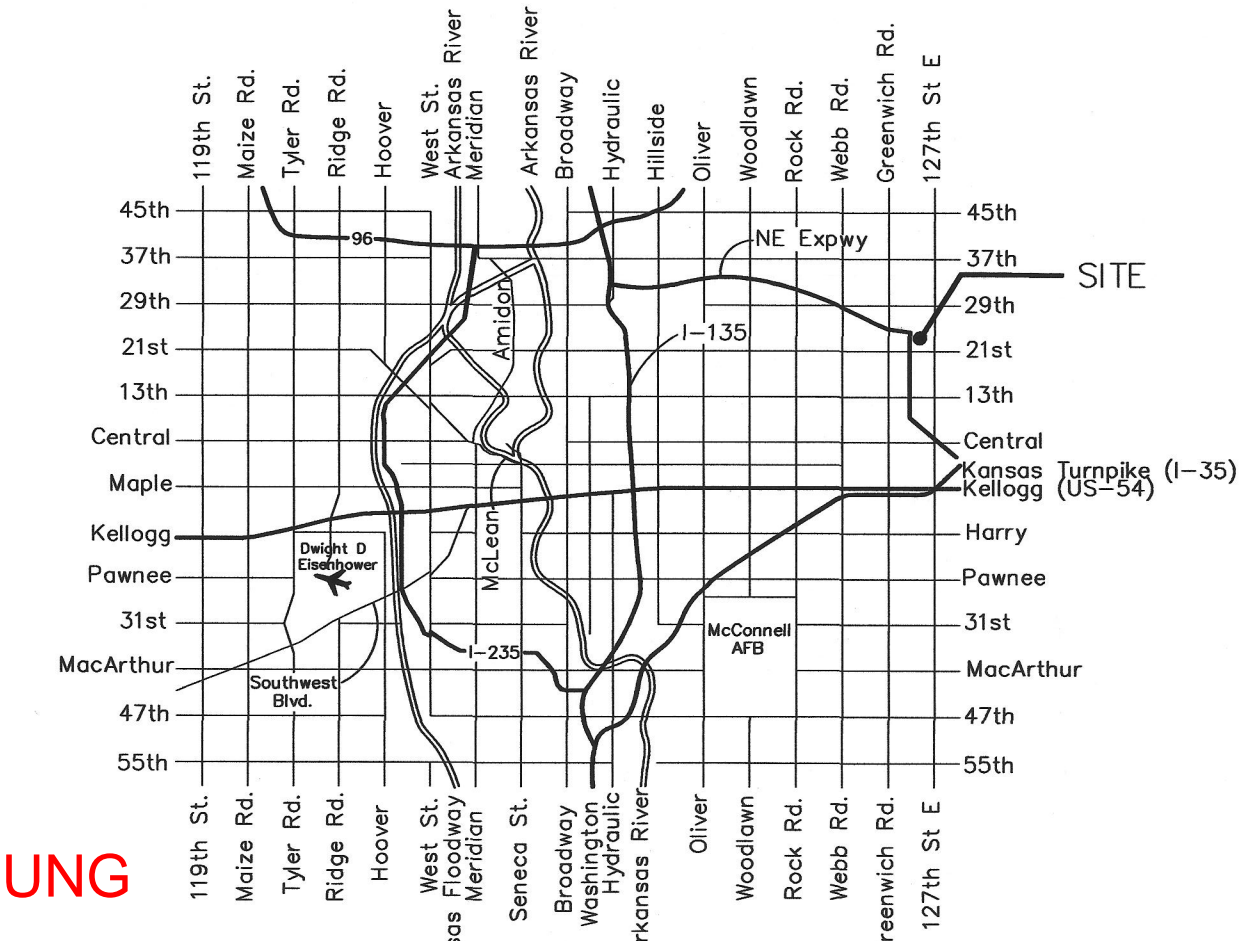


WATER MAIN IMPROVEMENTS TO SERVE MESSIAH BAPTIST CHURCH 4TH ADDITION

12200 East 21st. N., Wichita, KS 67206
Private Project Number: 2275 PPW (183021)

CITY OF WICHITA, KANSAS
Gary Janzen, P.E. City Engineer
October, 2019

AS BUILT PLAN
12-19-19
CONTRACTOR: WILKS UNDERGROUND
INSPECTING FIRM: MERESTONE
INSPECTOR: BRIAN PELTIER



Vicinity Map

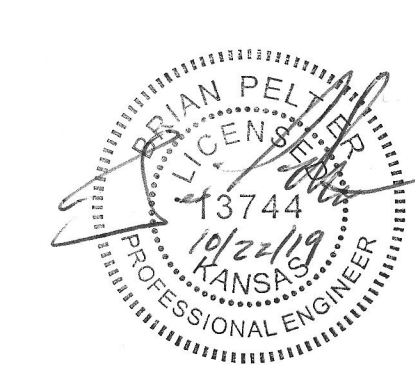
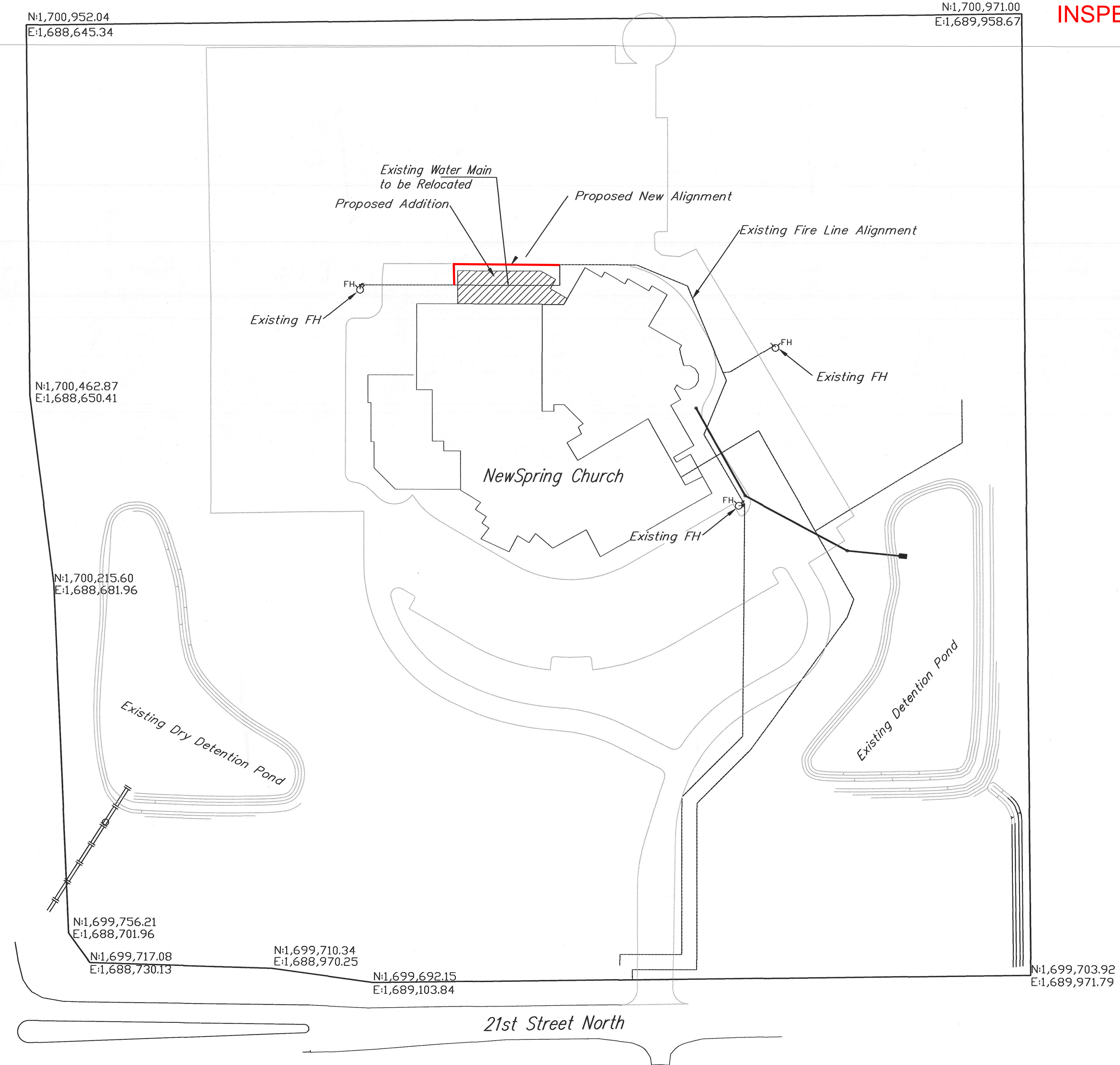
Index

Cover Sheet	1
Plan/Profile Sheet	2
Details	3

Erosion Details Available on-line at:
<http://wichita.gov/Government/Departments/PWU/Pages/Regulations.aspx>

GENERAL NOTES:

- Contractor will be required to provide notice to utility companies a minimum of seventy-two (72) hours prior to any excavation, as follows:
Kansas One-Call 687-2470
The Contractor must notify the following in case of an emergency:
AT&T 1-800-246-8464
Black Hills Energy 1-800-694-8989
City of Wichita Water & Sewer 1-316-219-8921
City of Wichita Stormwater 1-316-268-4090
City of Wichita Traffic Engineering 1-316-268-4034
Cox Communications, Inc. 1-888-249-3530
Kansas Gas Service 1-888-482-4950
Energy Electric Service 1-800-544-4857
- All construction shall be in accordance with current City of Wichita Standard specifications and special provisions. Water testing shall be completed on the rerouted system.
- Contractor shall not start work on the project until the project inspector is assigned to the project and is present on the site. Any work done without inspection will be required to be uncovered for inspection.
- Rubble from the removal of miscellaneous structures and excess excavation which is to be wasted shall be disposed of on sites to be provided by the Contractor. These sites shall be approved by the Engineer as to suitability, appearance and site location. Locations that, in the opinion of the Engineer, will leave an unsightly appearance will not be approved.

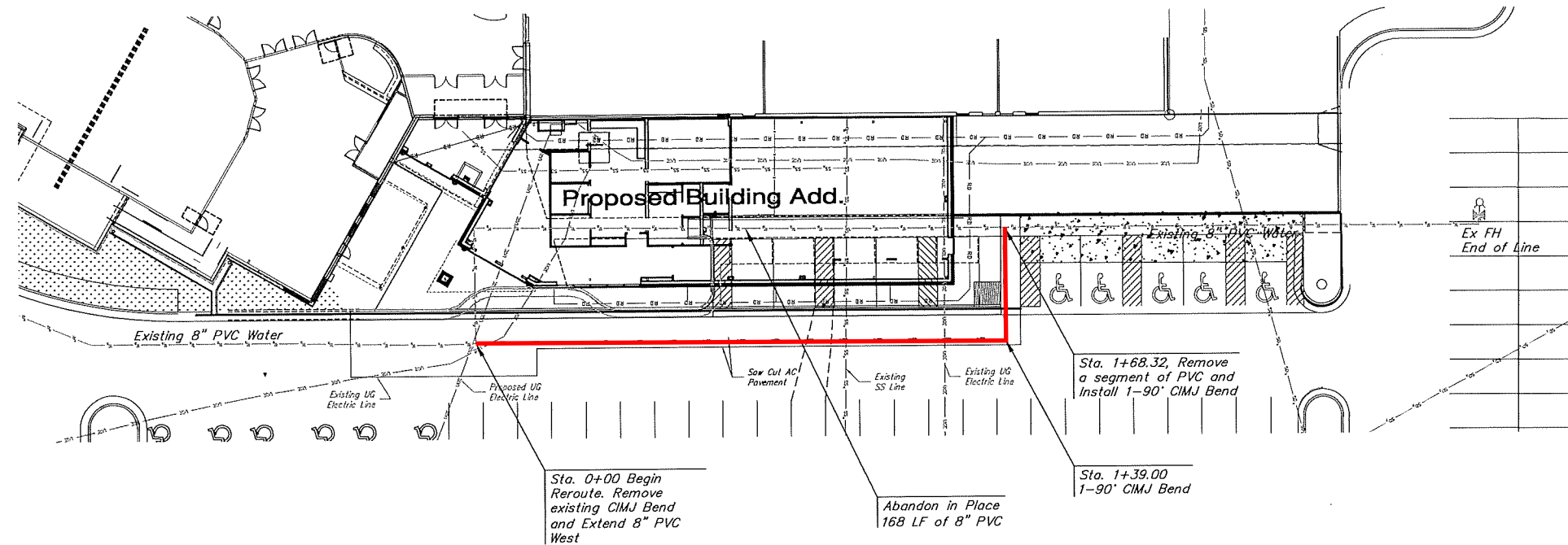


APPROVED AS NOTED
BY CITY ENGINEER OF WICHITA

Engineering Math Stehney 10.22.19
Utilities Dr. Jeely 10.22.19
Fire Department William 10-22-19

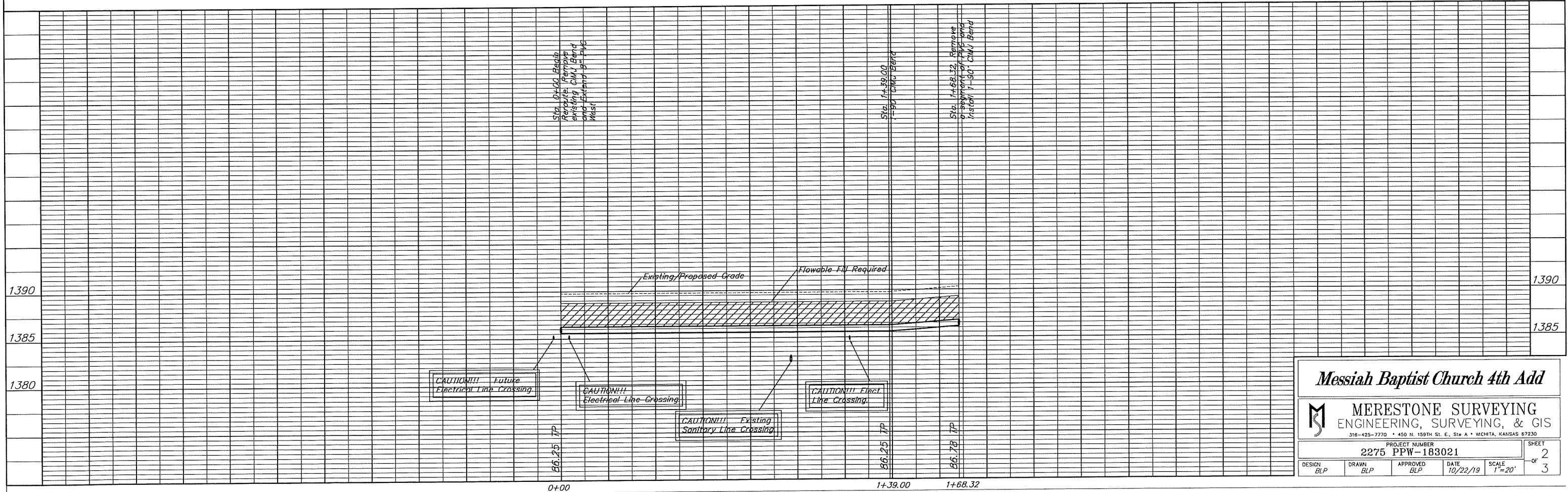
NOTE TO CONTRACTORS
Installation, Inspection and Testing for this project is to be provided by a Licensed Consulting Engineering Firm under contract with the Owner/Developer. Said Inspection to be in accordance with the City of Wichita Standard Construction Engineering Practices and certified by a Licensed Professional Engineer. No work shall be performed in dedicated easements or public right-of-way by the Contractor without such inspection nor shall any work be commenced without written authorization by the City Engineer. All Construction and Materials shall comply with the City of Wichita Specifications and Standards (on file and available in the City Engineer's Office).

October, 2019



SCALE:
 1" = 20' HORIZONTAL
 1" = 5' VERTICAL

PER PLAN



Messiah Baptist Church 4th Add

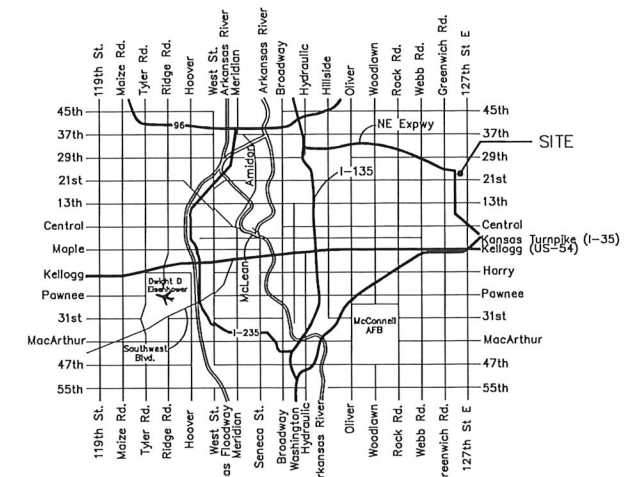
MERESTONE SURVEYING
 ENGINEERING, SURVEYING, & GIS
316-425-7770 • 450 N. 150TH ST. E., Ste A • WICHITA, KANSAS 67230

PROJECT NUMBER 2275 PPW-183021				SHEET 2
DESIGN BLP	DRAWN BLP	APPROVED BLP	DATE 10/22/19	SCALE 1"=20'
				OF 3

WATER MAIN IMPROVEMENTS TO SERVE MESSIAH BAPTIST CHURCH 4TH ADDITION

12200 East 21st. N., Wichita, KS 67206
Private Project Number: 2275 PPW (183021)

CITY OF WICHITA, KANSAS
Gary Janzen, P.E. City Engineer
October, 2019



Vicinity Map

Index

Cover Sheet	1
Plan/Profile Sheet	2
Details	3

Erosion Details Available on-line at:
<http://wichita.gov/Government/Departments/PWU/Pages/Regulations.aspx>

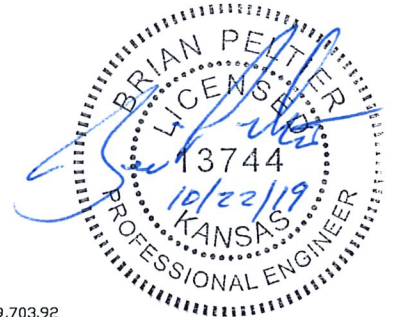
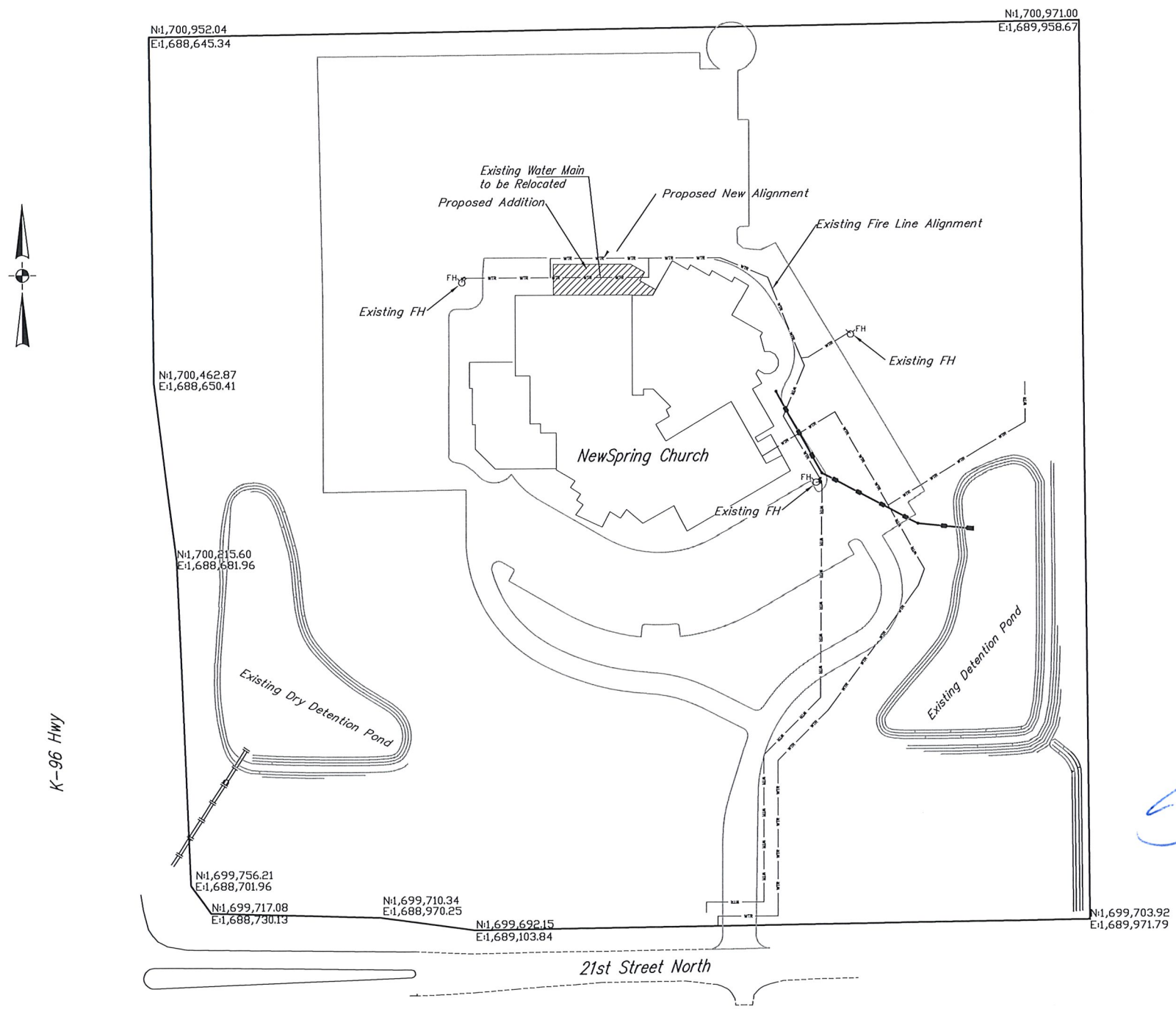
GENERAL NOTES:

1. Contractor will be required to provide notice to utility companies a minimum of seventy-two (72) hours prior to any excavation, as follows:

Kansas One-Call	687-2470
-----------------	----------

The Contractor must notify the following in case of an emergency:

AT&T	1-800-246-8464
Black Hills Energy	1-800-694-8989
City of Wichita Water & Sewer	1-316-219-8921
City of Wichita Stormwater	1-316-268-4090
City of Wichita Traffic Engineering	1-316-268-4034
Cox Communications, Inc.	1-888-249-3530
Kansas Gas Service	1-888-482-4950
Eergy Electric Service	1-800-544-4857
2. All construction shall be in accordance with current City of Wichita Standard specifications and special provisions. Water testing shall be completed on the rerouted system.
3. Contractor shall not start work on the project until the project inspector is assigned to the project and is present on the site. Any work done without inspection will be required to be uncovered for inspection.
4. Rubble from the removal of miscellaneous structures and excess excavation which is to be wasted shall be disposed of on sites to be provided by the Contractor. These sites shall be approved by the Engineer as to suitability, appearance and site location. Locations that, in the opinion of the Engineer, will leave an unsightly appearance will not be approved.



APPROVED AS NOTED
BY CITY ENGINEER OF WICHITA

Engineering _____

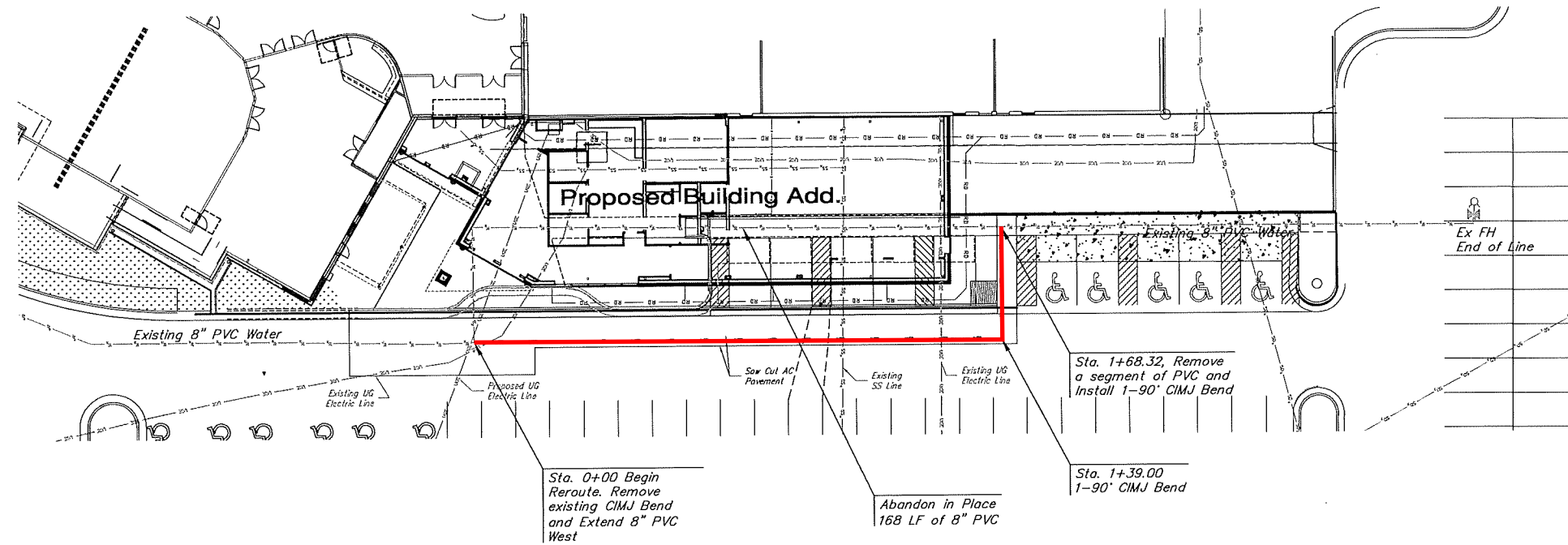
Utilities _____

Fire Department _____

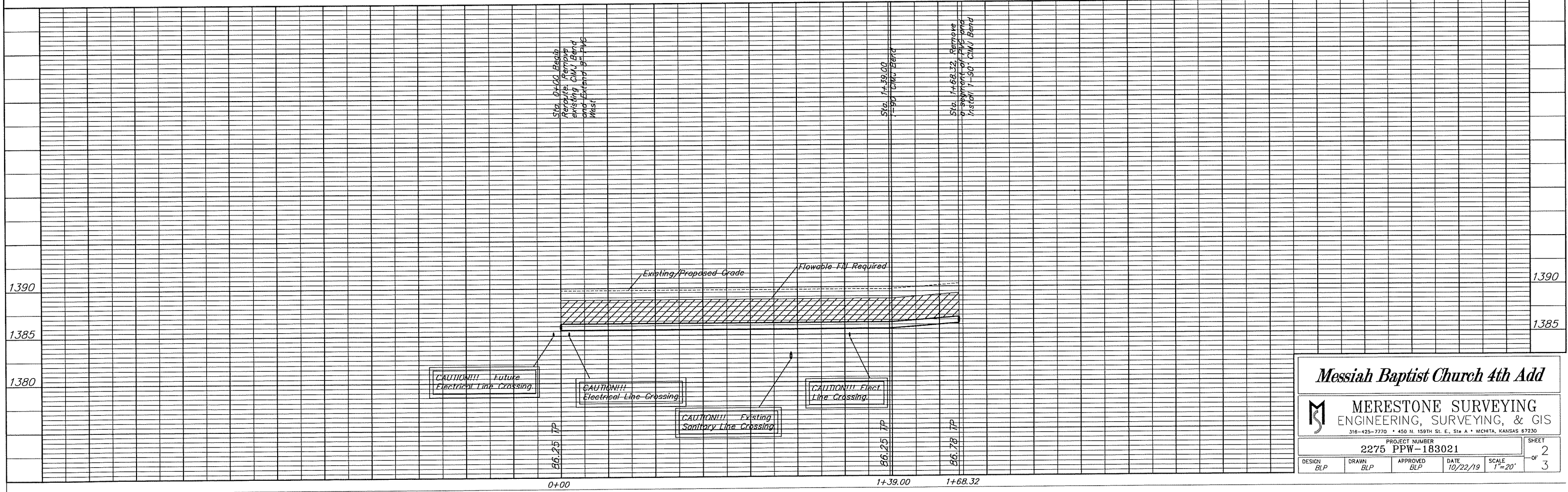
NOTE TO CONTRACTORS

Installation, Inspection and Testing for this project is to be provided by a Licensed Consulting Engineering Firm under contract with the Owner/Developer. Said Inspection to be in accordance with the City of Wichita Standard Construction Engineering Practices and certified by a Licensed Professional Engineer. No work shall be performed in dedicated easements or public right-of-way by the Contractor without such inspection nor shall any work be commenced without written authorization by the City Engineer. All Construction and Materials shall comply with the City of Wichita Specifications and Standards (on file and available in the City Engineer's Office).

October, 2019



SCALE:
 1" = 20' HORIZONTAL
 1" = 5' VERTICAL



Messiah Baptist Church 4th Add

MERESTONE SURVEYING
 ENGINEERING, SURVEYING, & GIS
316-425-7770 • 450 N. 150TH ST. E., Ste A • WICHITA, KANSAS 67230

DESIGN BLP	DRAWN BLP	APPROVED BLP	DATE 10/22/19	SCALE 1"=20'	SHEET 2 OF 3
---------------	--------------	-----------------	------------------	-----------------	-----------------------

