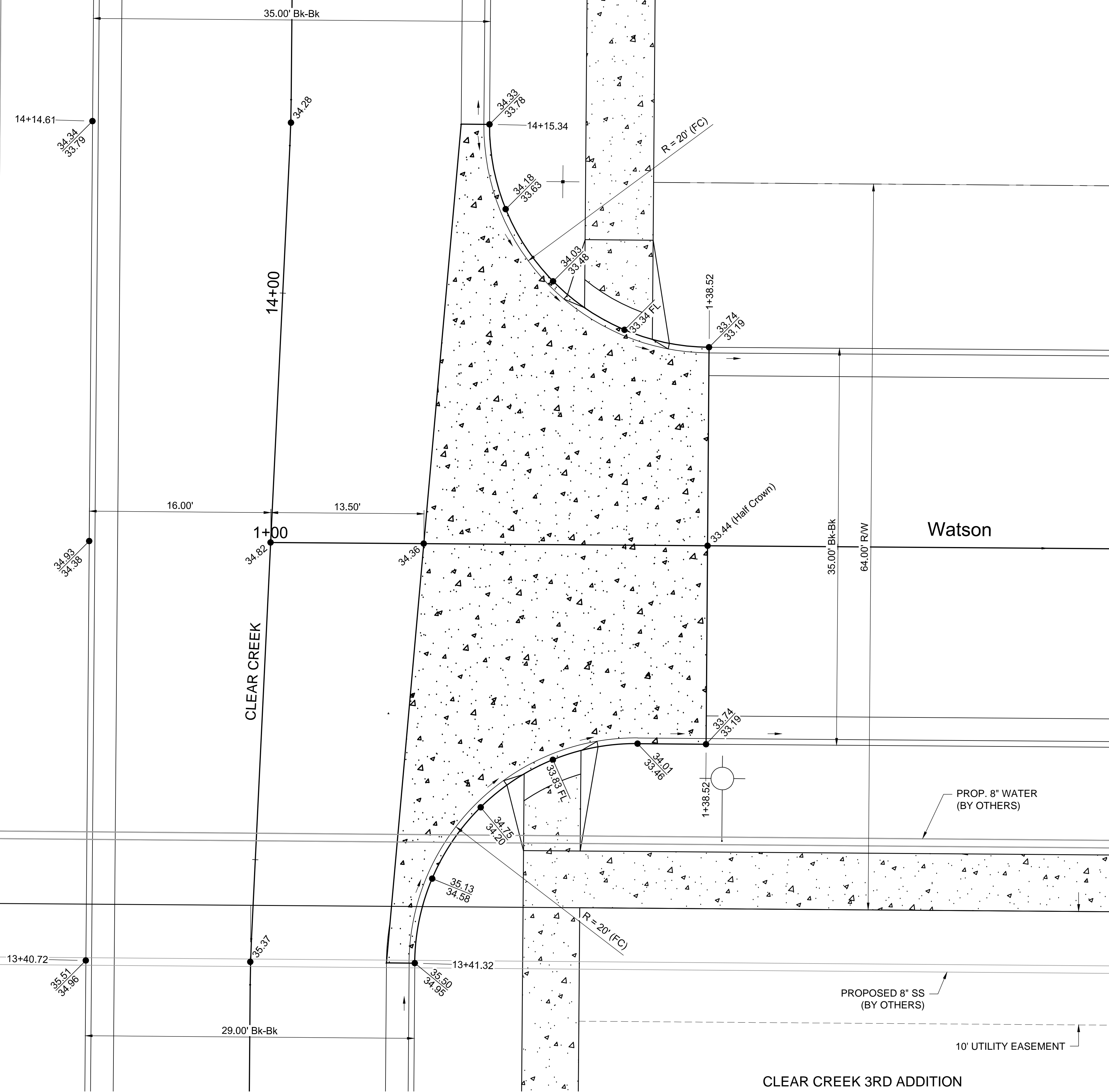


CLEAR CREEK 3RD ADDITION

CLEAR CREEK ADDITION



© 2019 GARVER, LLC  
 THIS DOCUMENT, ALONG WITH THE IDEAS AND DESIGNS CONVEYED HEREIN, SHALL BE CONSIDERED INSTRUMENTS OF PROFESSIONAL SERVICE AND ARE PROPERTY OF GARVER, LLC. ANY USE, REPRODUCTION, OR DISTRIBUTION OF THIS DOCUMENT, ALONG WITH THE IDEAS AND DESIGN CONTAINED HEREIN, IS PROHIBITED UNLESS AUTHORIZED IN WRITING BY GARVER, LLC OR EXPLICITLY ALLOWED IN THE GOVERNING PROFESSIONAL SERVICES AGREEMENT FOR THIS WORK.

8535 E. 21st Street N.  
 Wichita, KS 67206  
 (316) 264-8008

| REV. | DATE | DESCRIPTION | BY |
|------|------|-------------|----|
|      |      |             |    |
|      |      |             |    |



CITY OF WICHITA  
 WICHITA, KANSAS  
 CLEAR CREEK  
 PHASE 5 - PAVING

INTERSECTION  
 DETAIL

JOB NO.: 18267009  
 DATE: DEC. 2019  
 DESIGNED BY: EJG  
 DRAWN BY: DRS

BAR IS ONE INCH ON ORIGINAL DRAWING  
 IF NOT ONE INCH ON THIS SHEET, ADJUST SCALES ACCORDINGLY.

DRAWING NUMBER

SHEET NUMBER **12 OF 30**

File: L:\2018\18267009 - Clear Creek Ph 5 Engineering\Drawings\C3D\Paving\Intersection Detail.dwg Last Save: 12/5/2019 3:55 PM Last saved by: DRS\andrich  
 Last plotted by: Glover, Eric J. Plot Style: --- Plot Scale: 1:2.5649 Plot Date: 12/9/2019 10:58 AM Plotter used: None