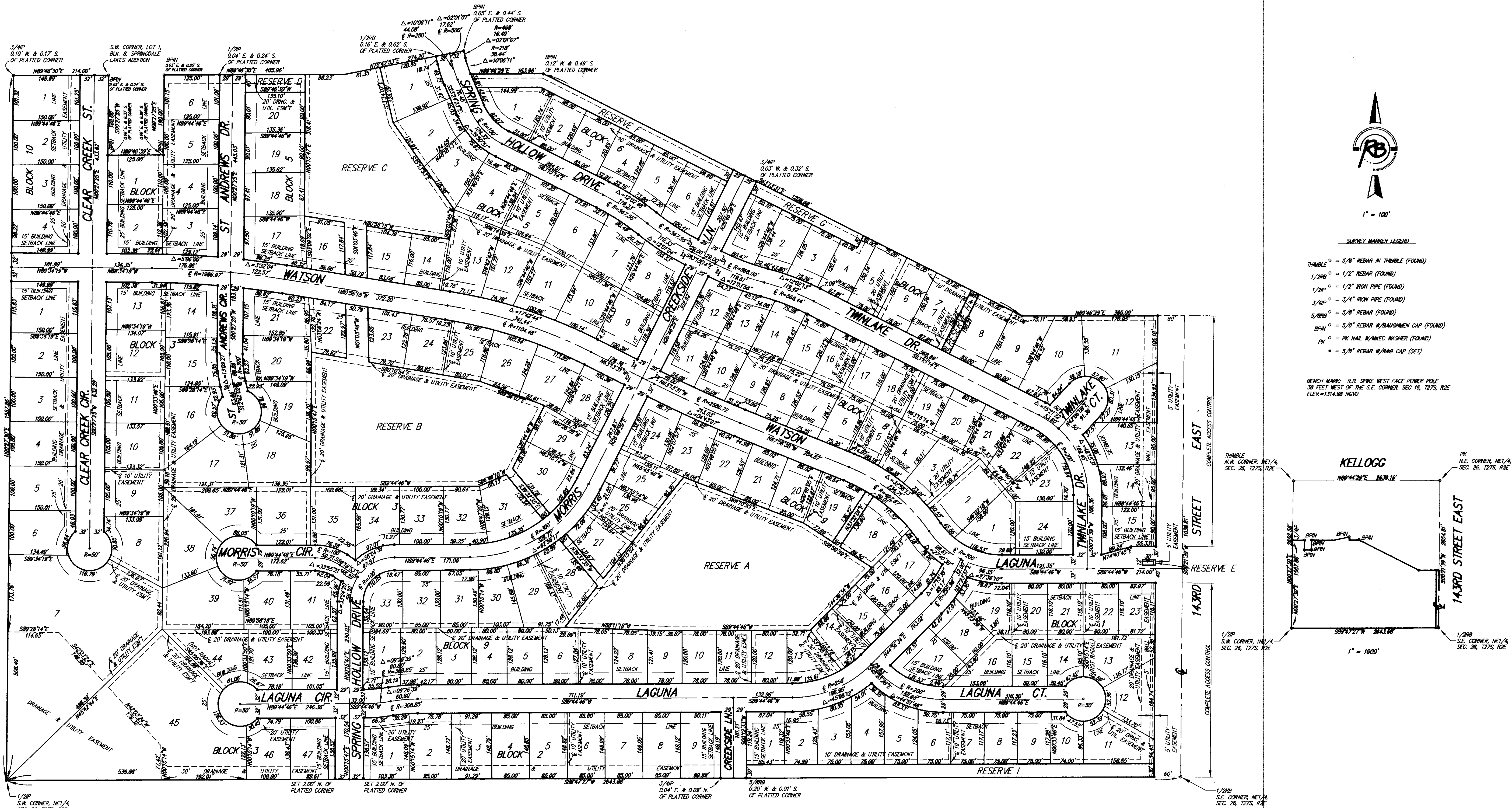
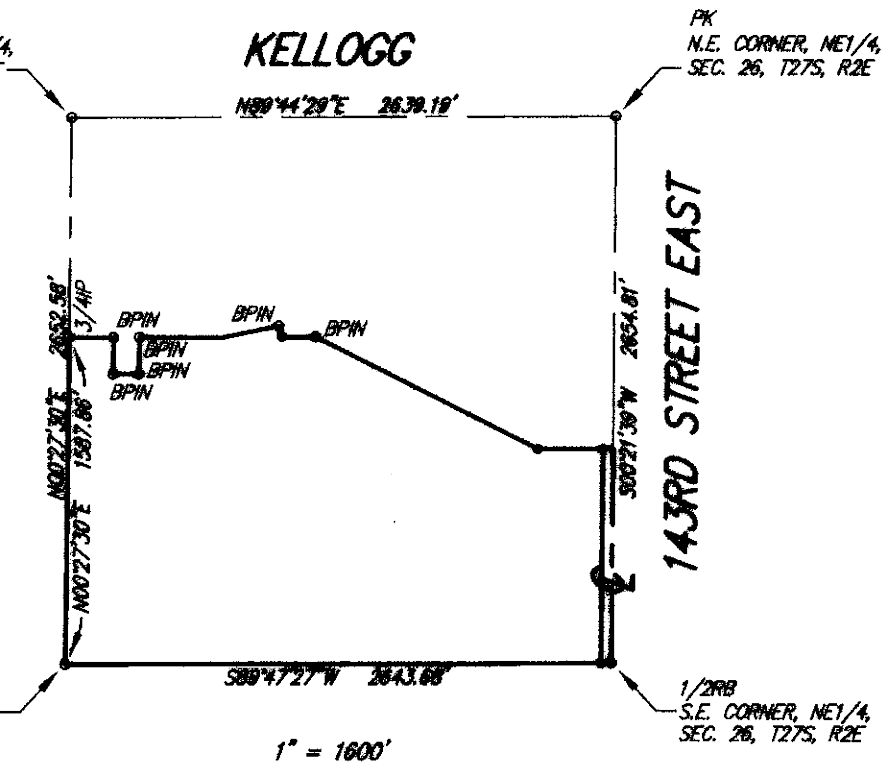


# CLEAR CREEK ADDITION

Wichita, Sedgwick County, Kansas

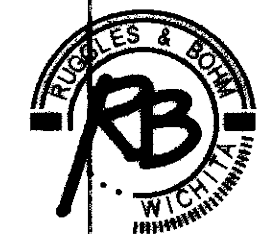


- SURVEY MARKER LEGEND**
- THIMBLE = 5/8" REBAR IN THIMBLE (FOUND)
  - 1/2"IP = 1/2" IRON PIPE (FOUND)
  - 3/4"IP = 3/4" IRON PIPE (FOUND)
  - 5/8"IP = 5/8" REBAR (FOUND)
  - BPM = 5/8" REBAR W/ BAUGHMAN CAP (FOUND)
  - PK = PK NAIL W/ MARK WASHER (FOUND)
  - = 5/8" REBAR W/ RAD CAP (SET)
- BENCH MARK: R.R. SPINE WEST FACE POWER POLE  
30 FEET WEST OF THE S.E. CORNER, SEC. 16, T27S, R2E  
ELEV. = 1314.00 NGVD



SHEET 2 OF 2

DWG FILE: 2266P-W.C.  
PROJECT NO. 0202286P  
APRIL 9, 2003



**Ruggles & Bohm, P.A.**  
Engineering, Surveying, Land Planning  
924 North Main (316) 264-8008  
Wichita, Kansas 67203 (316) 264-4621 fax  
www.rbkansas.com E-mail: info@rbkansas.com

**GARVER**  
© 2018 GARVER, LLC  
THIS DOCUMENT, ALONG WITH THE IDEAS AND DESIGNS CONVEYED HEREIN, SHALL BE CONSIDERED INSTRUMENTS OF PROFESSIONAL SERVICE AND ARE PROPERTY OF GARVER, LLC. ANY USE, REPRODUCTION, OR DISTRIBUTION OF THIS DOCUMENT, ALONG WITH THE IDEAS AND DESIGN CONTAINED HEREIN, IS PROHIBITED UNLESS AUTHORIZED IN WRITING BY GARVER, LLC OR EXPLICITLY ALLOWED IN THE GOVERNING PROFESSIONAL SERVICES AGREEMENT FOR THIS WORK.

8535 E. 21st Street N.  
Wichita, KS 67206  
(316) 264-8008



REV.	DATE	DESCRIPTION

**CITY OF WICHITA**  
WICHITA, KANSAS  
CLEAR CREEK  
PHASE 5 - WATER

CLEAR CREEK ADD. PLAT-Paving

JOB NO.: 18267009  
DATE: DEC. 2019  
DESIGNED BY: .  
DRAWN BY: .

BAR IS ONE INCH ON ORIGINAL DRAWING  
IF NOT ONE INCH ON THIS SHEET, ADJUST SCALES ACCORDINGLY.  
DRAWING NUMBER

File: L:\2018\18267009 - Clear Creek Ph 5 Engineering\Drawings\CAD\18267009-PLATS.dwg, Last Save: 12/4/2019 7:06 AM, Last saved by: DRS\stanchin, Last plotted by: Glover, Eric J., Plot Style: ---, Plot Scale: 1:2,5949, Plot Date: 12/9/2019 11:01 AM, Plotter used: None