

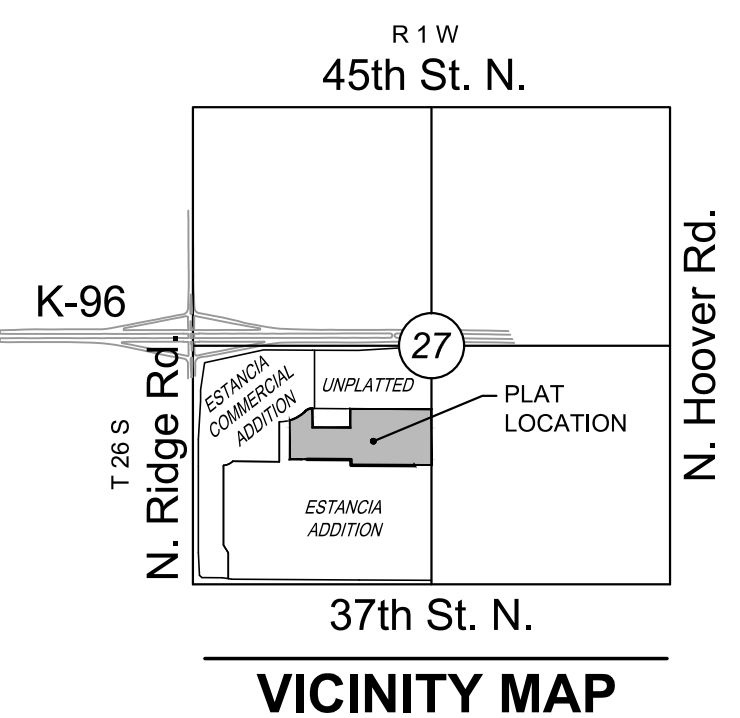
FINAL PLAT

ESTANCIA SECOND ADDITION

AN ADDITION TO WICHITA, SEDGWICK COUNTY, KANSAS

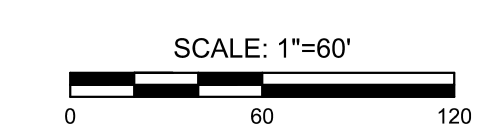
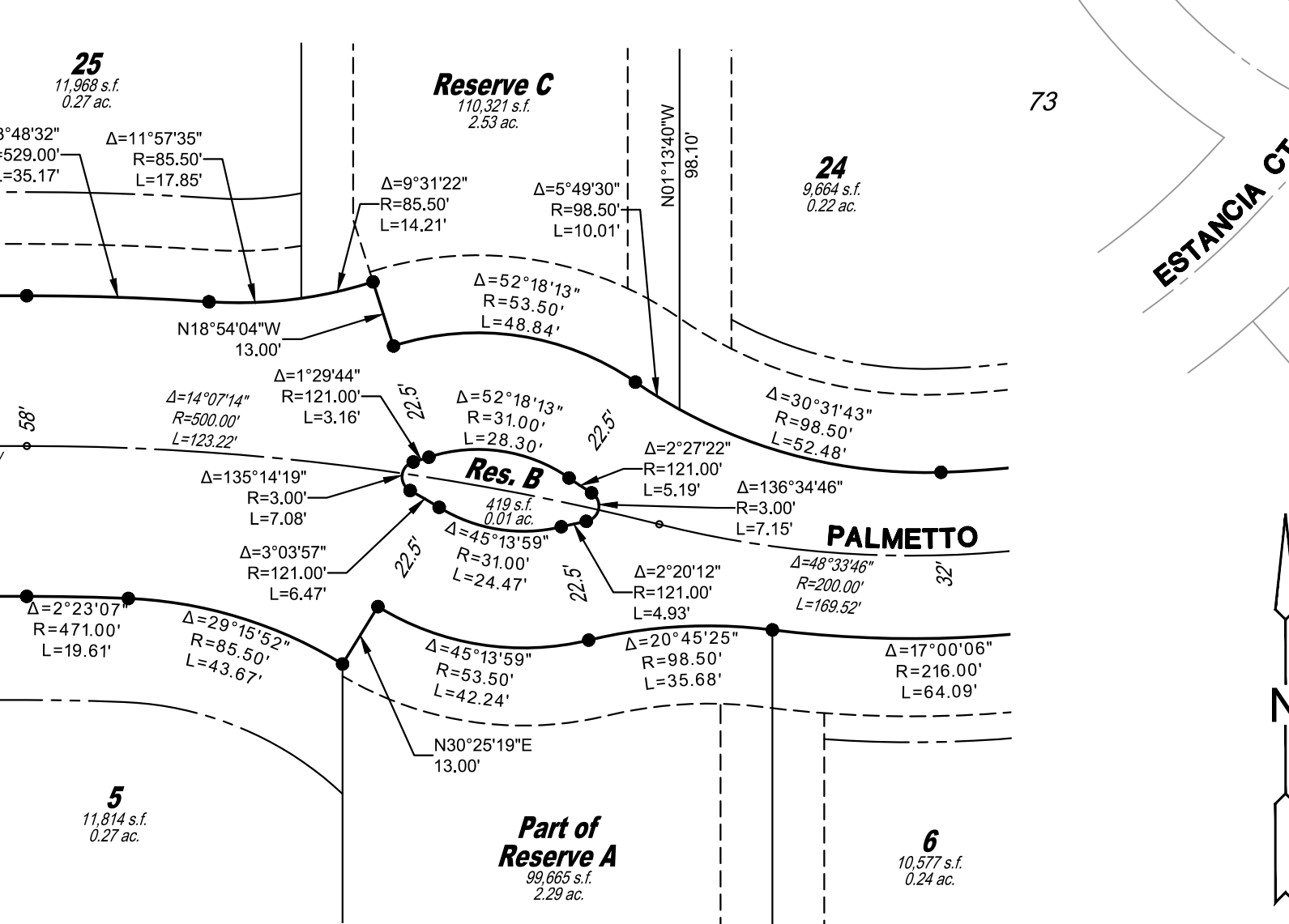
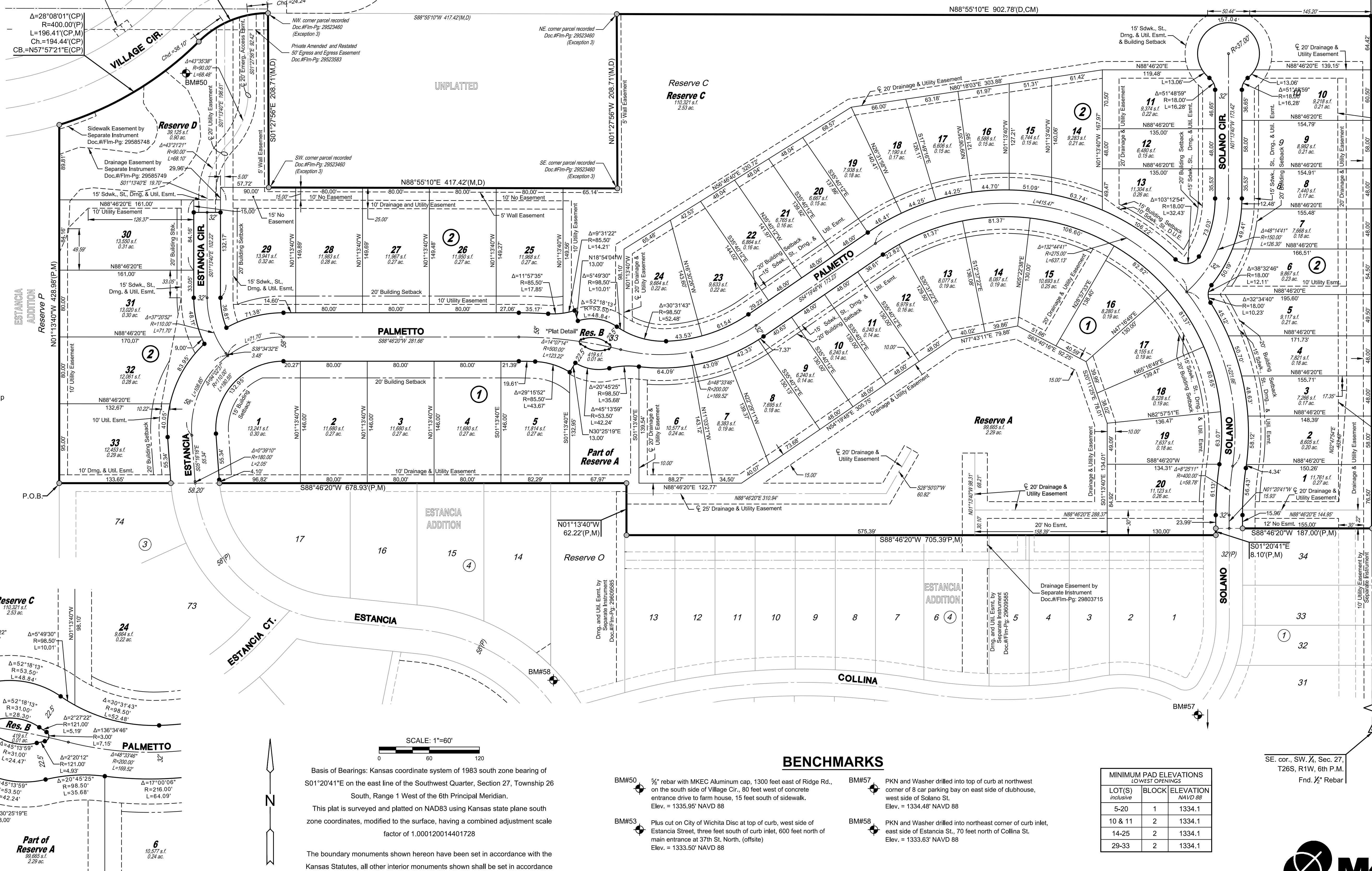
NE. cor., SW. 1/4, Sec. 27,
T26S, R1W, 6th P.M.
Fnd. Limestone 1.5' deep
with divot in center

UNPLATTED



LEGEND

- Date of Survey: 3/22/17
- △ = Section Corner Monument Found
 - = Found 5/8" rebar w/ MKEC CLS 39 id. cap
 - = Set 3/8" rebar w/ MKEC CLS 39 id. cap
 - ⊕ = Benchmark
 - (M) = Measured
 - (P) = Platted
 - (D) = Described
 - (CM) = Calculated from Measurement
 - (CP) = Calculated from Plat
 - Sdwk. = Sidewalk
 - St. = Street
 - Drng. = Drainage
 - Util. = Utility
 - Esmt. = Easement
 - 1 = Lot
 - ① = Block



Basis of Bearings: Kansas coordinate system of 1983 south zone bearing of S01°20'41"E on the east line of the Southwest Quarter, Section 27, Township 26 South, Range 1 West of the 6th Principal Meridian.

This plat is surveyed and platted on NAD83 using Kansas state plane south zone coordinates, modified to the surface, having a combined adjustment scale factor of 1.000120014401728

The boundary monuments shown hereon have been set in accordance with the Kansas Statutes, all other interior monuments shown shall be set in accordance with the developers phased improvement plans and/or before at their request/discretion.

BENCHMARKS

- BM#50 5/8" rebar with MKEC Aluminum cap, 1300 feet east of Ridge Rd., on the south side of Village Cir., 80 feet west of concrete entrance drive to farm house, 15 feet south of sidewalk. Elev. = 1335.95' NAVD 88
- BM#53 Plus cut on City of Wichita Disc at top of curb, west side of Estancia Street, three feet south of curb inlet, 600 feet north of main entrance at 37th St. North. (offsite) Elev. = 1333.50' NAVD 88
- BM#57 PKN and Washer drilled into top of curb at northwest corner of 8 car parking bay on east side of clubhouse, west side of Solano St. Elev. = 1334.48' NAVD 88
- BM#58 PKN and Washer drilled into northeast corner of curb inlet, east side of Estancia St., 70 feet north of Collina St. Elev. = 1333.63' NAVD 88

MINIMUM PAD ELEVATIONS LOWEST OPENINGS		
LOT(S) inclusive	BLOCK	ELEVATION NAVD 88
5-20	1	1334.1
10 & 11	2	1334.1
14-25	2	1334.1
29-33	2	1334.1

SE. cor., SW. 1/4, Sec. 27,
T26S, R1W, 6th P.M.
Fnd. 1/2" Rebar

