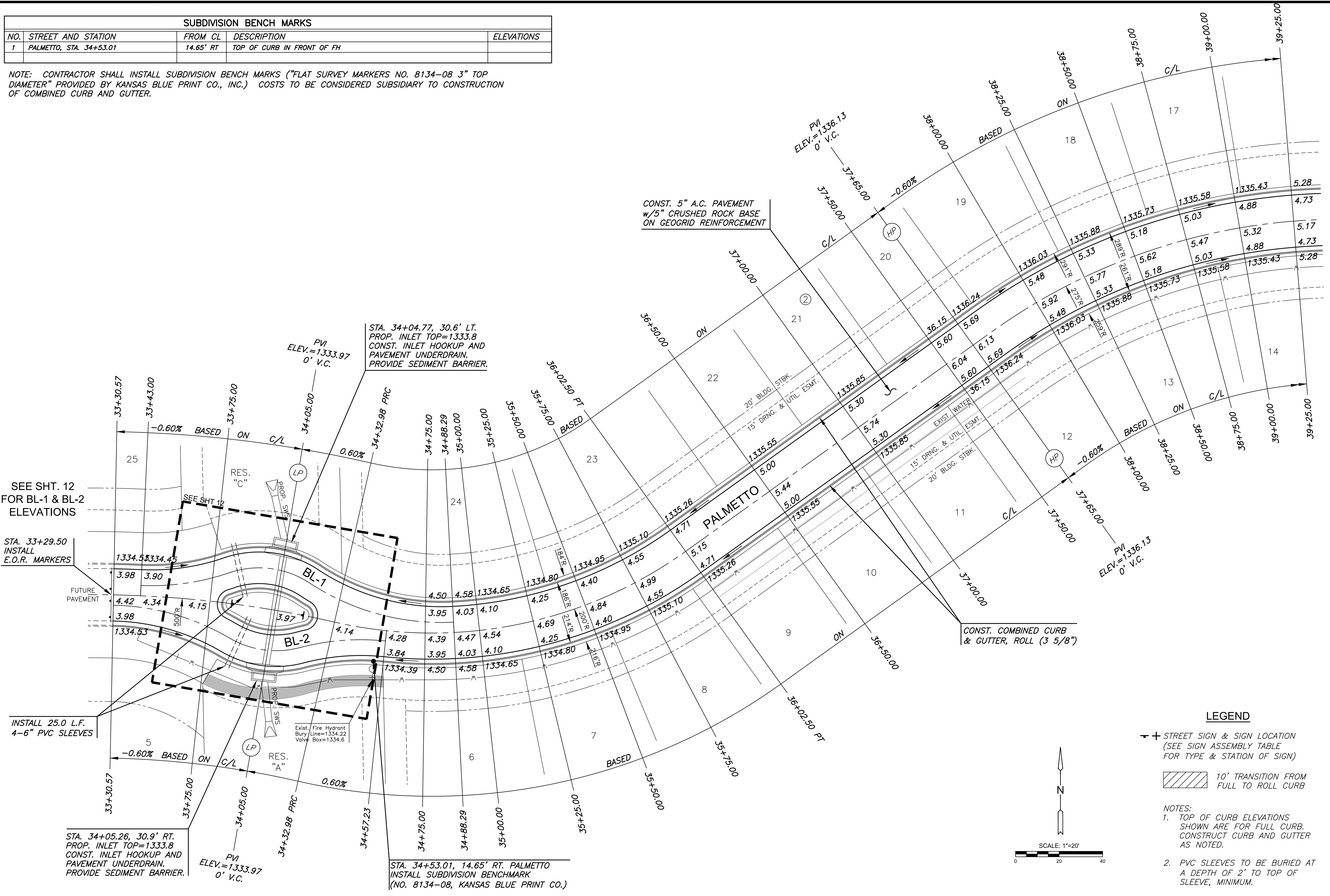


J:\PROJECTS\2019\10\10288_ESTANCIA_SECOND_18338_CAD\SHOTS\06_CIVIL\PAVPH118338-05-6200.DWG
 PLOTTED: Friday, December 20, 2019 @ 08:45PM

SUBDIVISION BENCH MARKS				
NO.	STREET AND STATION	FROM CL	DESCRIPTION	ELEVATIONS
1	PALMETTO, STA. 34+53.01	14.65' RT	TOP OF CURB IN FRONT OF FH	

NOTE: CONTRACTOR SHALL INSTALL SUBDIVISION BENCH MARKS ("FLAT SURVEY MARKERS NO. 8134-08 3" TOP DIAMETER" PROVIDED BY KANSAS BLUE PRINT CO., INC.) COSTS TO BE CONSIDERED SUBSIDIARY TO CONSTRUCTION OF COMBINED CURB AND GUTTER.



CONST. 5" A.C. PAVEMENT
w/5" CRUSHED ROCK BASE
ON GEOGRID REINFORCEMENT

STA. 34+04.77, 30.6' LT.
PROP. INLET TOP=1333.8
CONST. INLET HOOKUP AND
PAVEMENT UNDERDRAIN.
PROVIDE SEDIMENT BARRIER.

PVI
ELEV.=1333.97
0' V.C.

PVI
ELEV.=1336.13
0' V.C.

SEE SHT. 12
FOR BL-1 & BL-2
ELEVATIONS

STA. 33+29.50
INSTALL
E.O.R. MARKERS

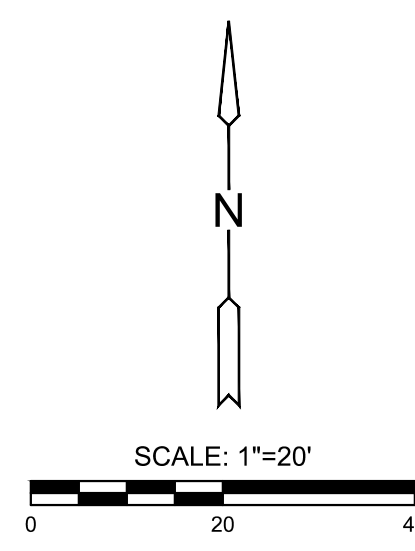
INSTALL 25.0 L.F.
4-6" PVC SLEEVES

STA. 34+05.26, 30.9' RT.
PROP. INLET TOP=1333.8
CONST. INLET HOOKUP AND
PAVEMENT UNDERDRAIN.
PROVIDE SEDIMENT BARRIER.

PVI
ELEV.=1333.97
0' V.C.

STA. 34+53.01, 14.65' RT. PALMETTO
INSTALL SUBDIVISION BENCHMARK
(NO. 8134-08, KANSAS BLUE PRINT CO.)

CONST. COMBINED CURB
& GUTTER, ROLL (3 5/8")



LEGEND

STREET SIGN & SIGN LOCATION
(SEE SIGN ASSEMBLY TABLE
FOR TYPE & STATION OF SIGN)

10' TRANSITION FROM
FULL TO ROLL CURB

NOTES:
1. TOP OF CURB ELEVATIONS
SHOWN ARE FOR FULL CURB.
CONSTRUCT CURB AND GUTTER
AS NOTED.

2. PVC SLEEVES TO BE BURIED AT
A DEPTH OF 2' TO TOP OF
SLEEVE, MINIMUM.



PAVING & INCIDENTAL DRAINAGE FOR
ESTANCIA 2ND ADDITION
 PHASE 1

©2019
MKEC Engineering
All Rights Reserved
www.mkec.com
These drawings and their contents,
including, but not limited to, all concepts,
designs, & ideas are the exclusive
property of MKEC Engineering (MKEC),
and may not be used or reproduced in any
way without the express consent of MKEC.

PALMETTO

PROJECT NO.	472-2019-085560
DATE	DEC 2019
SCALE	1" = 20'
DESIGNED	DFL
DRAWN	JWC
CHECKED	GJA

NO.	REVISION	DATE

SHEET NO.
10 OF 29