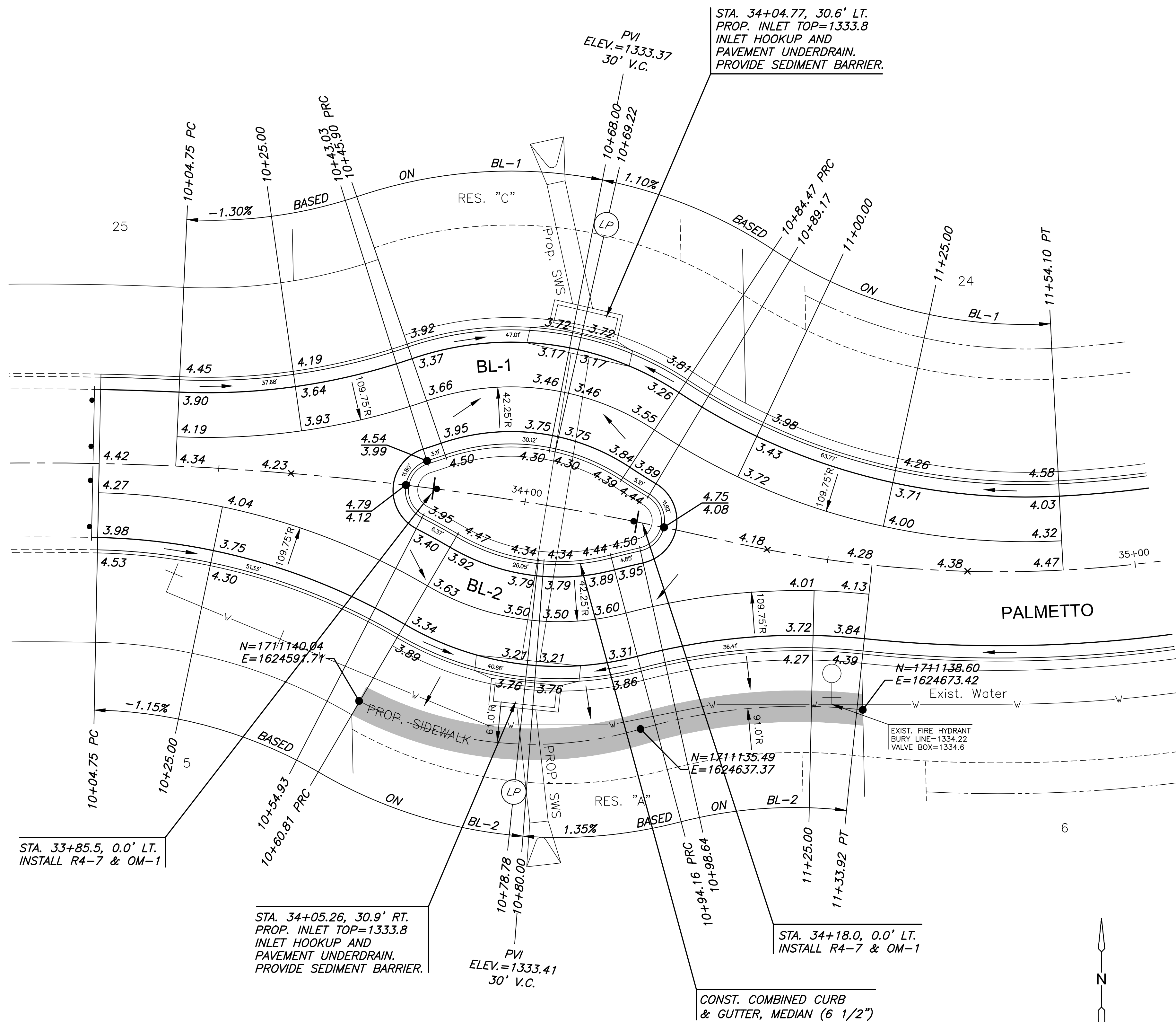


PLOTTED: Friday, December 20, 2019 @ 04:02PM

J:\PROJECTS\2019\10\10388_ESTANCIA_SECOND_18338_CAD\SHOTS\05 CIVIL\PAV\PH11\18338-05-5202.DWG

PAVING & INCIDENTAL DRAINAGE FOR
ESTANCIA 2ND ADDITION
PHASE 1



STA. 33+85.5, 0.0' LT.
INSTALL R4-7 & OM-1

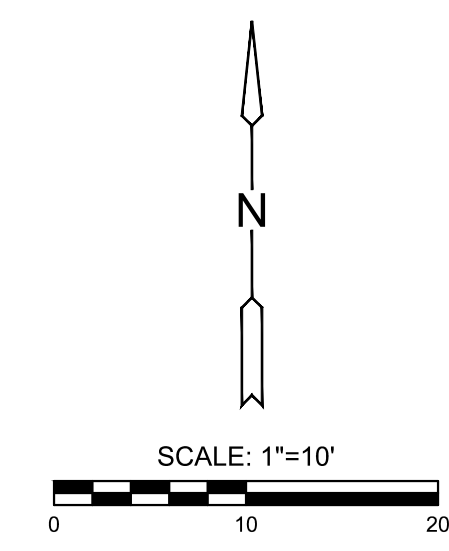
STA. 34+05.26, 30.9' RT.
PROP. INLET TOP=1333.8
INLET HOOKUP AND
PAVEMENT UNDERDRAIN.
PROVIDE SEDIMENT BARRIER.

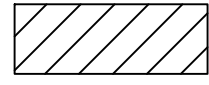

PVI
ELEV.=1333.41
30' V.C.

CONST. COMBINED CURB
& GUTTER, MEDIAN (6 1/2")

STA. 34+04.77, 30.6' LT.
PROP. INLET TOP=1333.8
INLET HOOKUP AND
PAVEMENT UNDERDRAIN.
PROVIDE SEDIMENT BARRIER.

STA. 34+18.0, 0.0' LT.
INSTALL R4-7 & OM-1



- ✦ + STREET SIGN & SIGN LOCATION
(SEE SIGN ASSEMBLY TABLE
FOR TYPE & STATION OF SIGN)
-  10' TRANSITION FROM
FULL TO ROLL CURB
-  GRADE/FLOW

NOTES:
1. TOP OF CURB ELEVATIONS
SHOWN ARE FOR FULL CURB.
CONSTRUCT CURB AND GUTTER
AS NOTED.

©2019
MKEC Engineering
All Rights Reserved
www.mkec.com
These drawings and their contents,
including, but not limited to, all concepts,
designs, & ideas are the exclusive
property of MKEC Engineering (MKEC),
and may not be used or reproduced in any
way without the express consent of MKEC.

PALMETTO (MEDIAN)	
PROJECT NO.	472-2019-085560
DATE	DEC 2019
SCALE	1" = 10'
DESIGNED	DRAWN
DFL	JWC
CHECKED	GJA
NO.	REVISION
SHEET NO.	
12 OF 29	