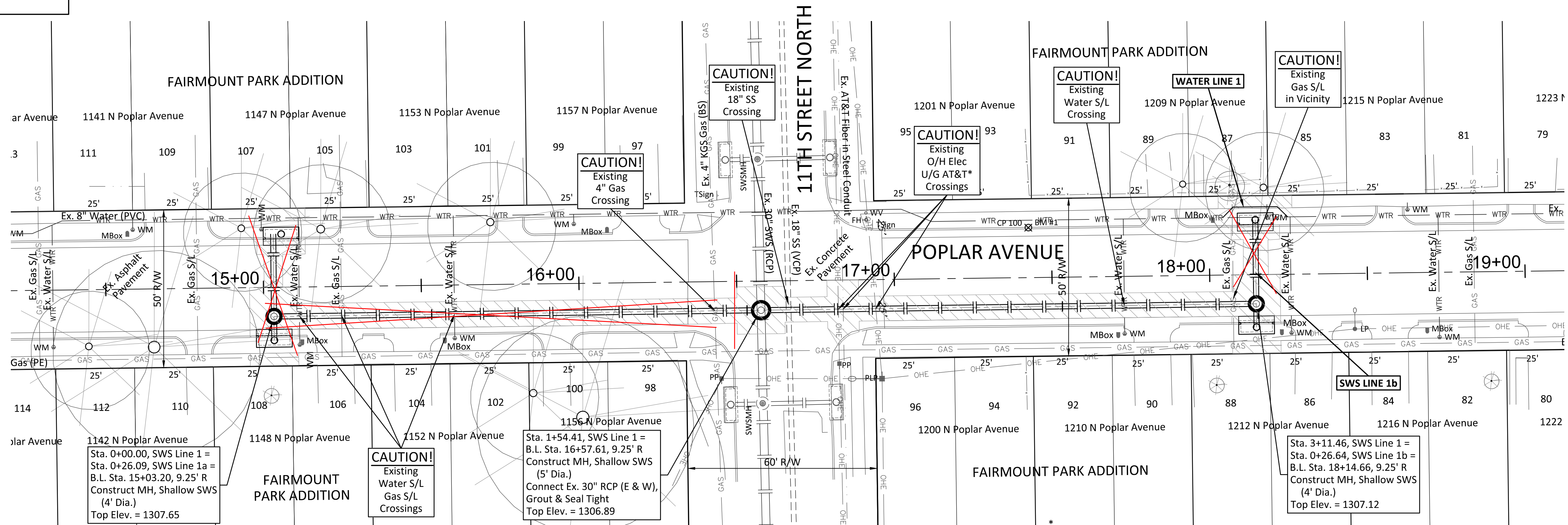
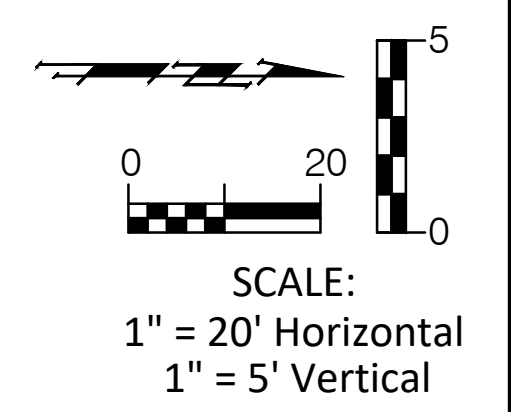


BENCHMARKS:
 BM #1 - Crow's Foot Cut on Top of Curb 80' North of the Centerline of 11th Street North on the West Side of Poplar. Elev. = 1307.25 (NAVD 88)



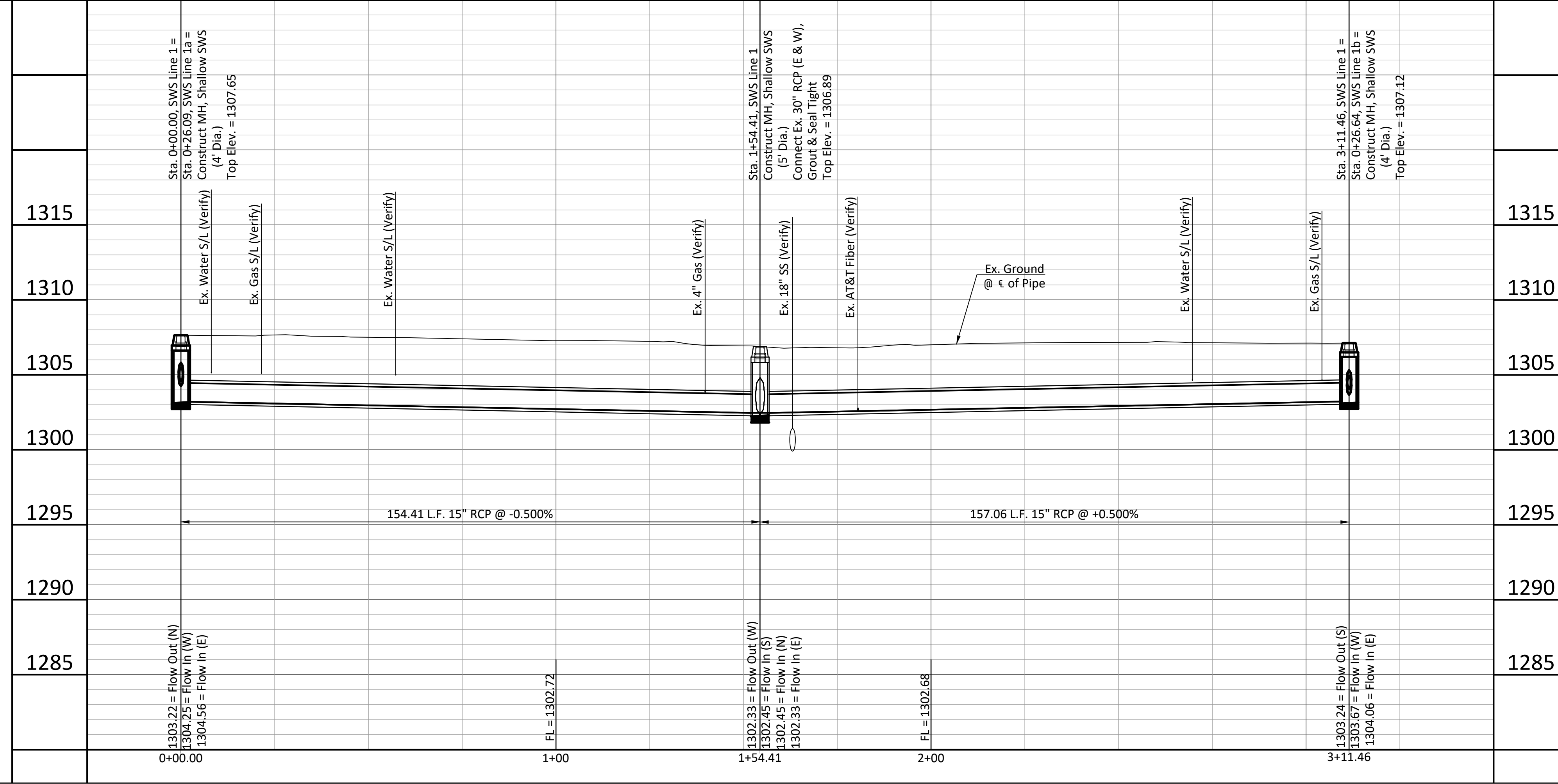
Note:
 Pavement, Sidewalks, Etc. To Be Removed Are Indicated By:

1142 N Poplar Avenue
 Sta. 0+00.00, SWS Line 1 = Sta. 0+26.09, SWS Line 1a = B.L. Sta. 15+03.20, 9.25' R Construct MH, Shallow SWS (4' Dia.)
 Top Elev. = 1307.65

1156 N Poplar Avenue
 Sta. 1+54.41, SWS Line 1 = B.L. Sta. 16+57.61, 9.25' R Construct MH, Shallow SWS (5' Dia.)
 Connect Ex. 30" RCP (E & W), Grout & Seal Tight
 Top Elev. = 1306.89

1212 N Poplar Avenue
 Sta. 3+11.46, SWS Line 1 = Sta. 0+26.64, SWS Line 1b = B.L. Sta. 18+14.66, 9.25' R Construct MH, Shallow SWS (4' Dia.)
 Top Elev. = 1307.12

* AT&T will be Relocating the Existing Fiber Optic Cable and Duct crossing SWS Line 1 at Sta. 1+80.5 During the Construction of the SWS. The Pipe Contractor will be Responsible for Removal and Replacement of Additional Concrete Pavement to Allow AT&T Working Room to Adjust the Duct. Contact Tim Fisher, (316) 390-1886, or Jason Edwards, (316) 841-1392 at least 1 week Prior to Coordinate the Pavement Removal and Construction Timing.



STORM WATER SEWER IMPROVEMENTS
POPLAR AVENUE - SWS LINE 1
 Sta. 0+00.00 - Sta. 3+11.46
 POPULAR AVENUE & GREEN STREET

PROJECT NUMBER: 468-085428
 INTERNAL NUMBER: 19-04-E244
 DESIGN: TPV
 DRAWN: TPV
 DATE: July 2019
 SHEET: 3 OF 19

BAUGHMAN COMPANY
 315 Ellis St. Wichita, KS 67211 316-262-7271
 BaughmanCo.com