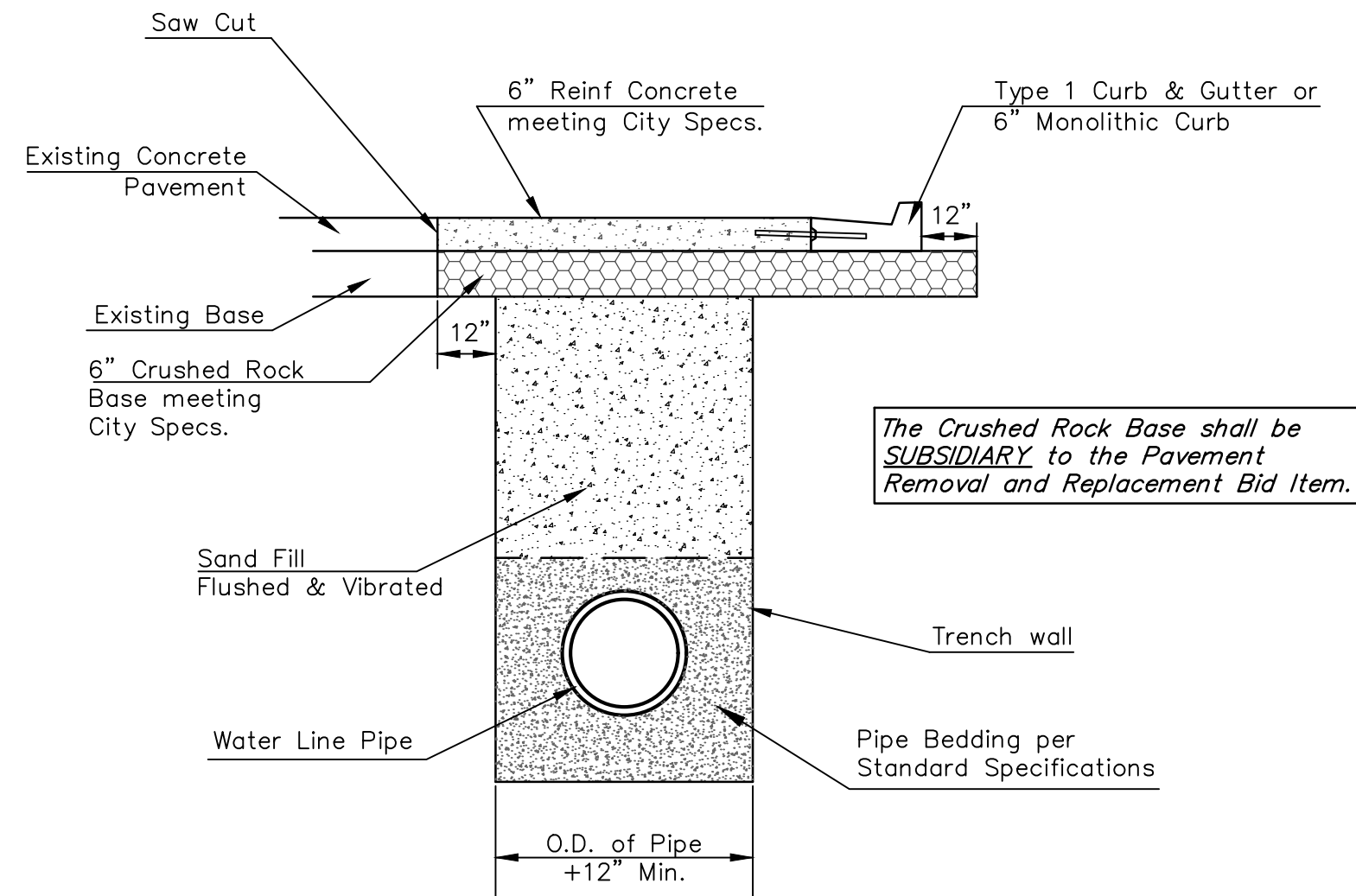


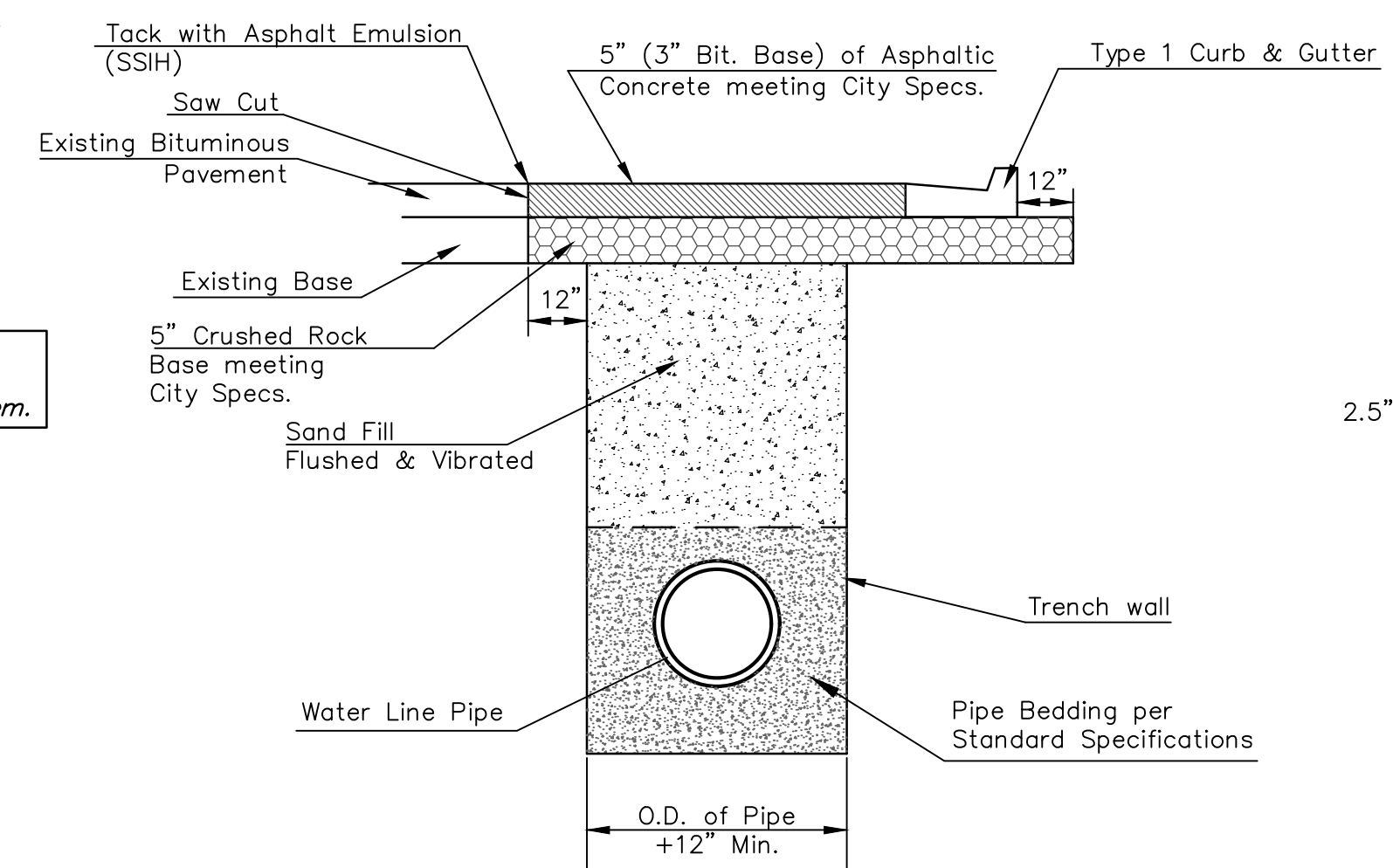
WATER SERVICE REPLACEMENT TABLE					
Address	Street	B.L. Station	Offset	Type of Service	Remarks
1147 N	Poplar Avenue	14+99.5	18.4' Lt.	Short	Move 3' South*
1148 N	Poplar Avenue	15+11.3	18.3' Rt.	Long	Move Tap 3' North*
1152 N	Poplar Avenue	15+60.4	17.7' Rt.	Long	
1210 N	Poplar Avenue	17+72.8	18.2' Rt.	Long	
1209 N	Poplar Avenue	18+18.4	18.0' Lt.	Short	Move 3' West*
1152 N	Green Street	35+61.5	17.8' Rt.	Long	
2601 E	11th Street N	36+05.9	17.9' Rt.	Long	
1202 N	Green Street	37+23.7	17.8' Rt.	Long	
1212 N	Green Street	37+81.8	17.9' Rt.	Long	

The Proposed Services will replace everything from the new main to the existing water meter, which will remain. The Contractor will be responsible for providing any adapters necessary to connect the new 1" services to the existing 3/4" water meters. All Cost associated with this work shall be SUBSIDIARY to the Service Installation.

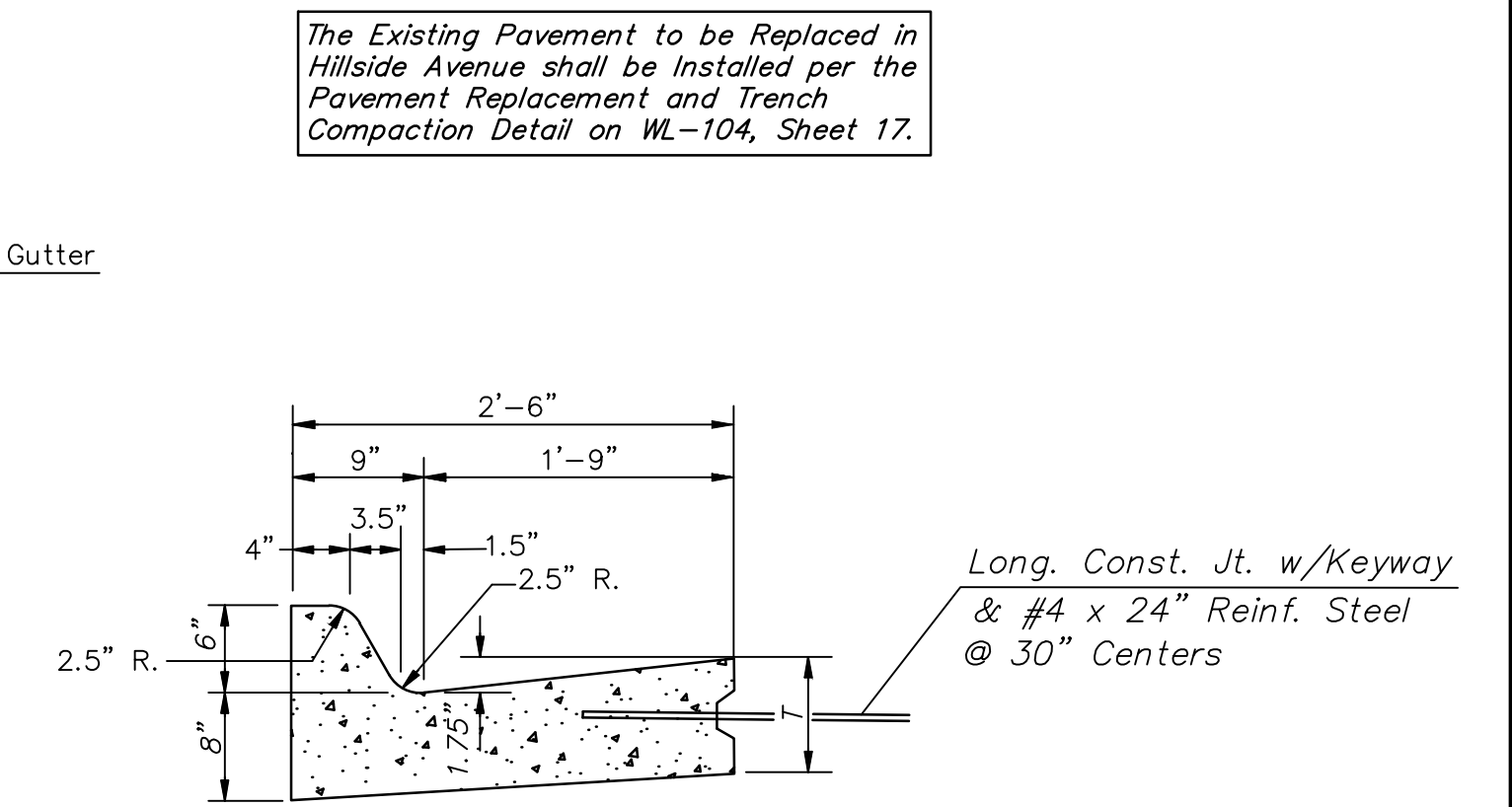
\* The existing water meters at 1147 N. Poplar and 1132 N. Green Street shall be removed and replaced to allow for construction of the proposed inlet. All cost associated with removing the existing meter and installation of the new meter setter and can shall be SUBSIDIARY to the Bid Item "Service Meter Setter, 1".



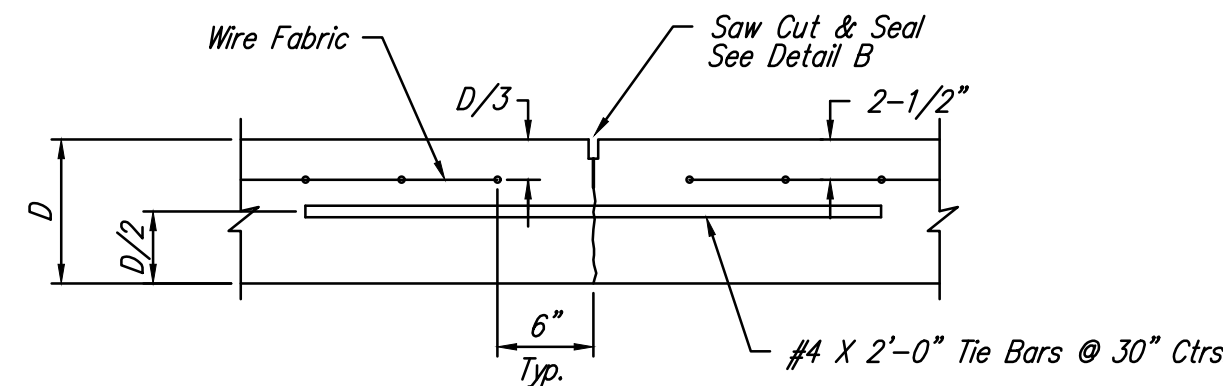
**REINF. CONCRETE PAVEMENT REPLACEMENT DETAIL**



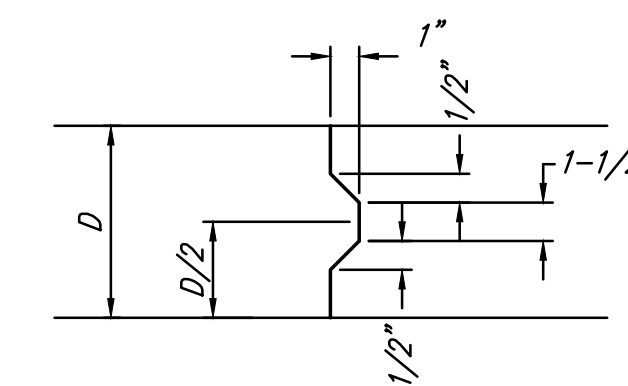
**AC PAVEMENT REPLACEMENT DETAIL**



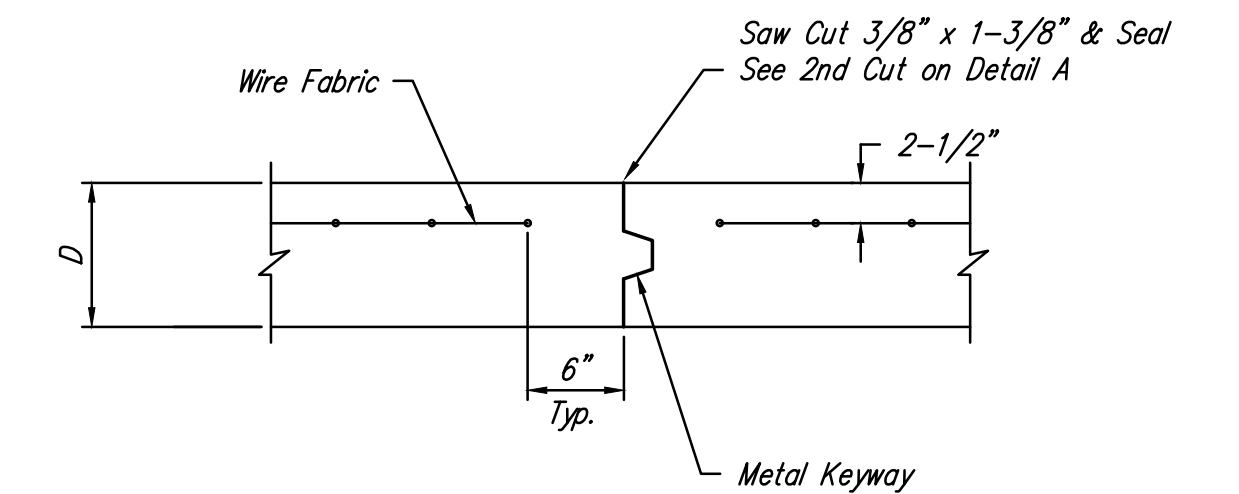
**TYPE 1 COMBINED CURB & GUTTER (6")**



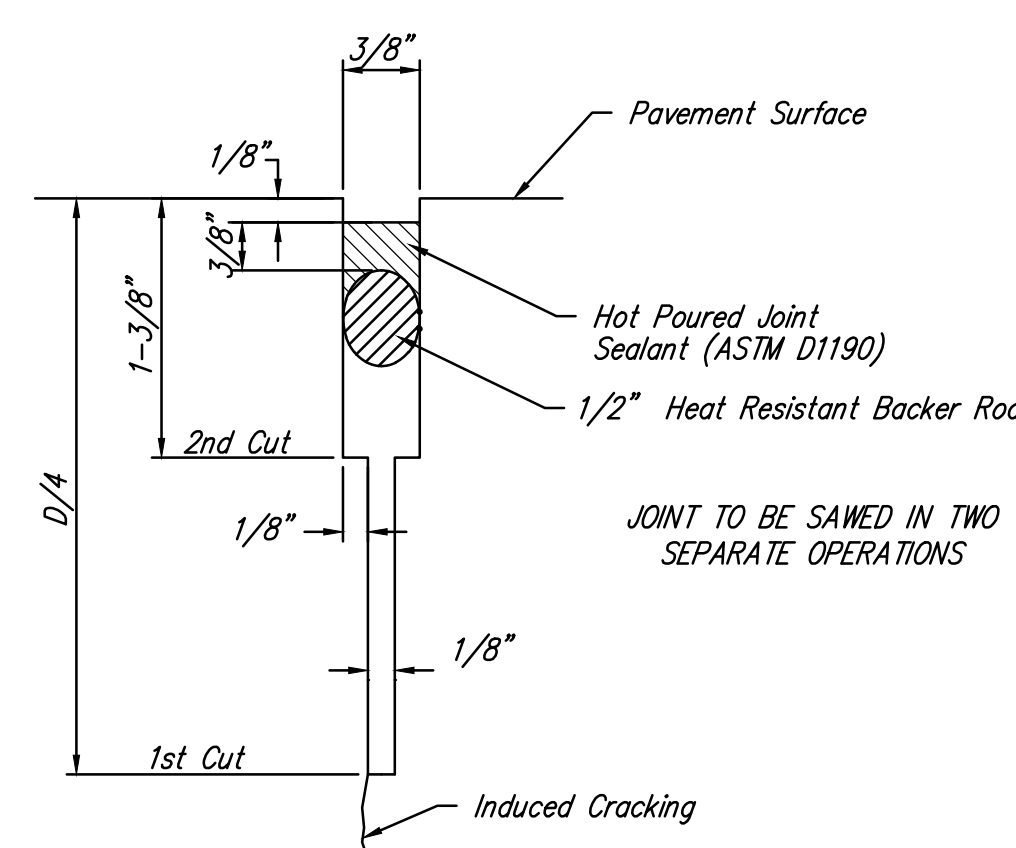
**LONGITUDINAL JOINT DETAIL (L.J.)**



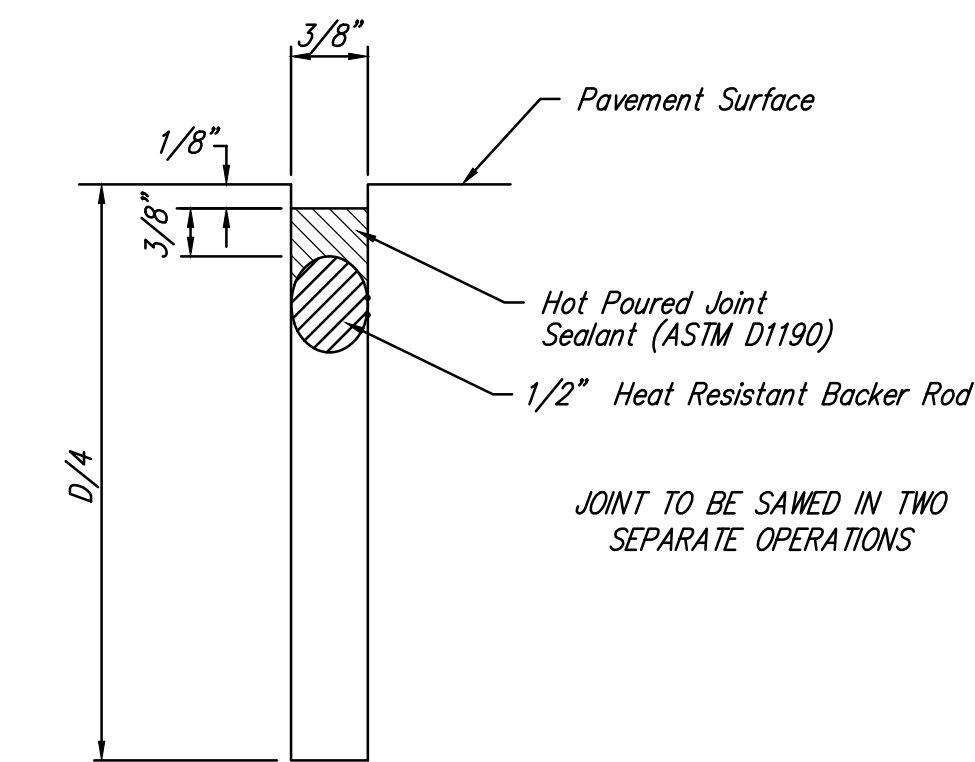
**KEYWAY DETAIL**



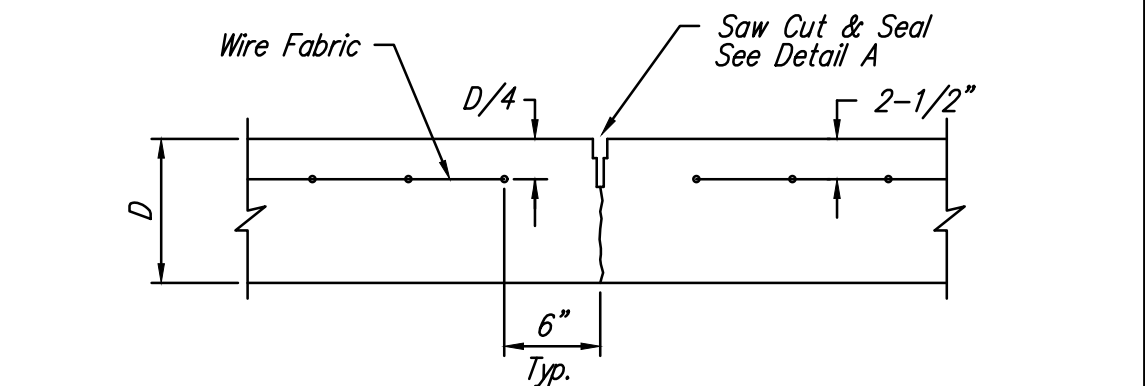
**OPTIONAL CONTRACTION JOINT (CONSTRUCTION JOINT)**



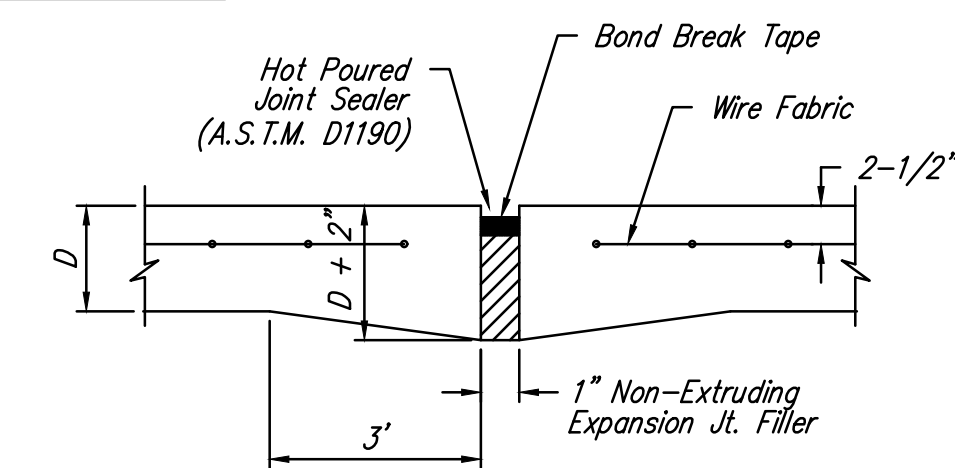
**SAW JOINT DETAIL "A"**



**SAW JOINT DETAIL "B"**

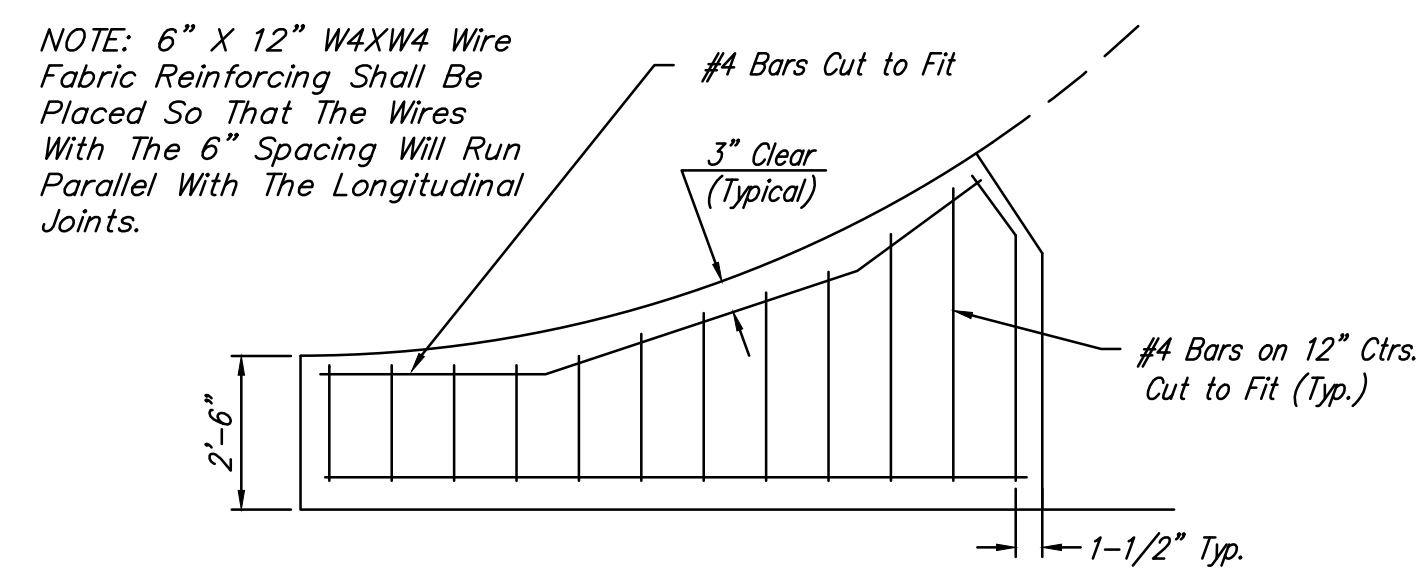


**CONTRACTION JOINT DETAIL (C.J.)**

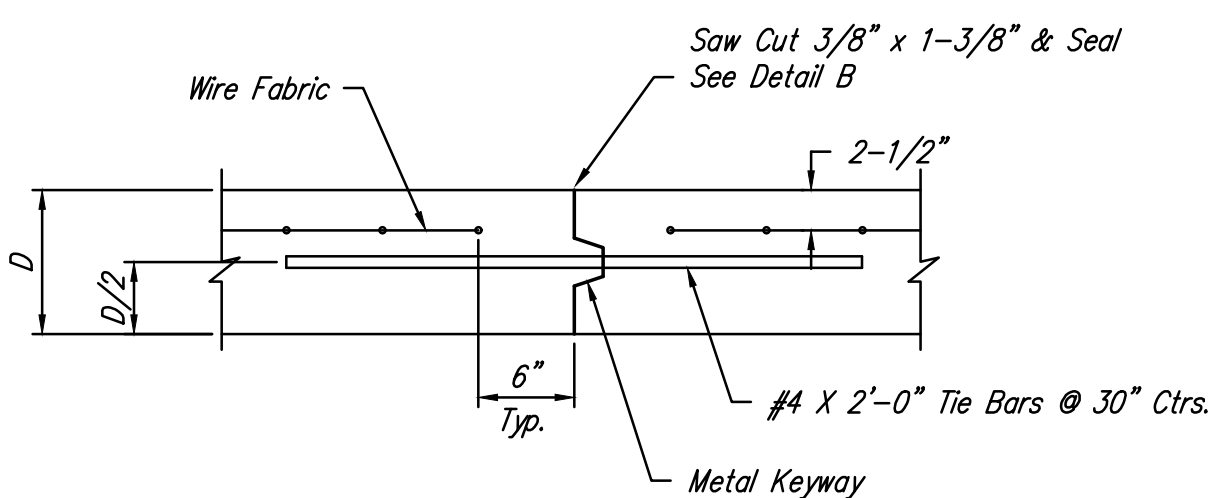


**EXPANSION JOINT**

NOTE: Extra Thickness to be Subsidiary to Price of Square Yards Pavement



**WING REINFORCING DETAIL**



**OPTIONAL LONGITUDINAL JOINT DETAIL (L.J.) (CONSTRUCTION JOINT)**