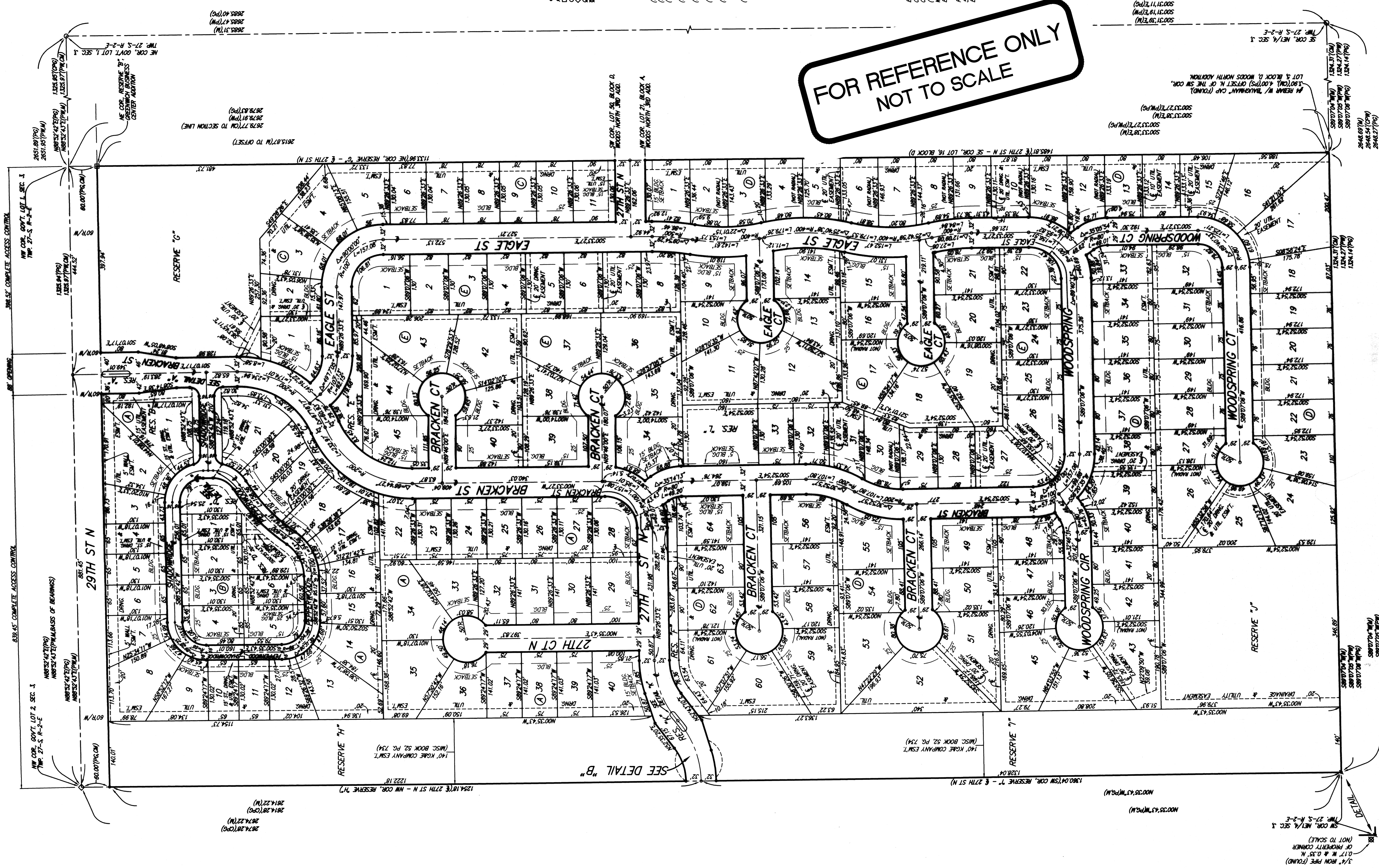


FIREFLY WAY AN ADDITION TO WICHITA, SEDGWICK COUNTY, KANSAS



FOR REFERENCE ONLY
NOT TO SCALE

- = REBAR W/ BAUGHMAN CAP (SET)
 - = REBAR W/ BAUGHMAN CAP (FOUND)
 - = 1/2" IRON PIPE (FOUND) (COMMON UNKNOWN)
 - = REBAR OVER STONE (FOUND)
 - = METAL CAP IN CONC (FOUND)
 - = 3/4" IRON PIPE (FOUND) (COMMON UNKNOWN)
- (M) = MEASURED
 - (PS) = PREVIOUS SURVEY
 - (CM) = CALLED AND MEASURED
 - (PF) = PLATTED INFO. PER THE FURNISH. PER
 - (PM) = WOODS NORTH ADDITION
 - (CPM) = CALCULATED INFO. PER PLATTED INFO. PER
 - (PS) = GREENWICH BUSINESS CENTER ADDITION
 - (CPG) = GREENWICH BUSINESS CENTER ADDITION

LOT	BLOCK	ELEVATION	MARKER
1-4	C	1305.5	
24-26	D	1307.8	
41-43	D	1307.8	

BENCHMARK:
CITY OF WICHITA BENCHMARK DISC 1307.7 E. & 146.6 N.
OF THE COR. LOT 1, BLOCK D, FIREFLY WAY, LOT 2, BLOCK A,
WOODS NORTH ADDITION, NE COR. LOT 2, BLOCK A,
ELEV. = 1307.69 WOODS
RAILROAD SPINE IN E. FACE OF E. 71' POLE 39.9' W. &
S&A S. OF NE COR. RESERVE 7', FIREFLY WAY,
ELEV. = 1309.54 WOODS

NOTE:
A drainage plan has been developed for the plat and
shown on sheet 28 of this plat. The drainage plan
shows the location of all storm sewers and manholes
and is to be used in conjunction with the
approval of the applicable City or County Engineer and
is to be used in conjunction with the plat.