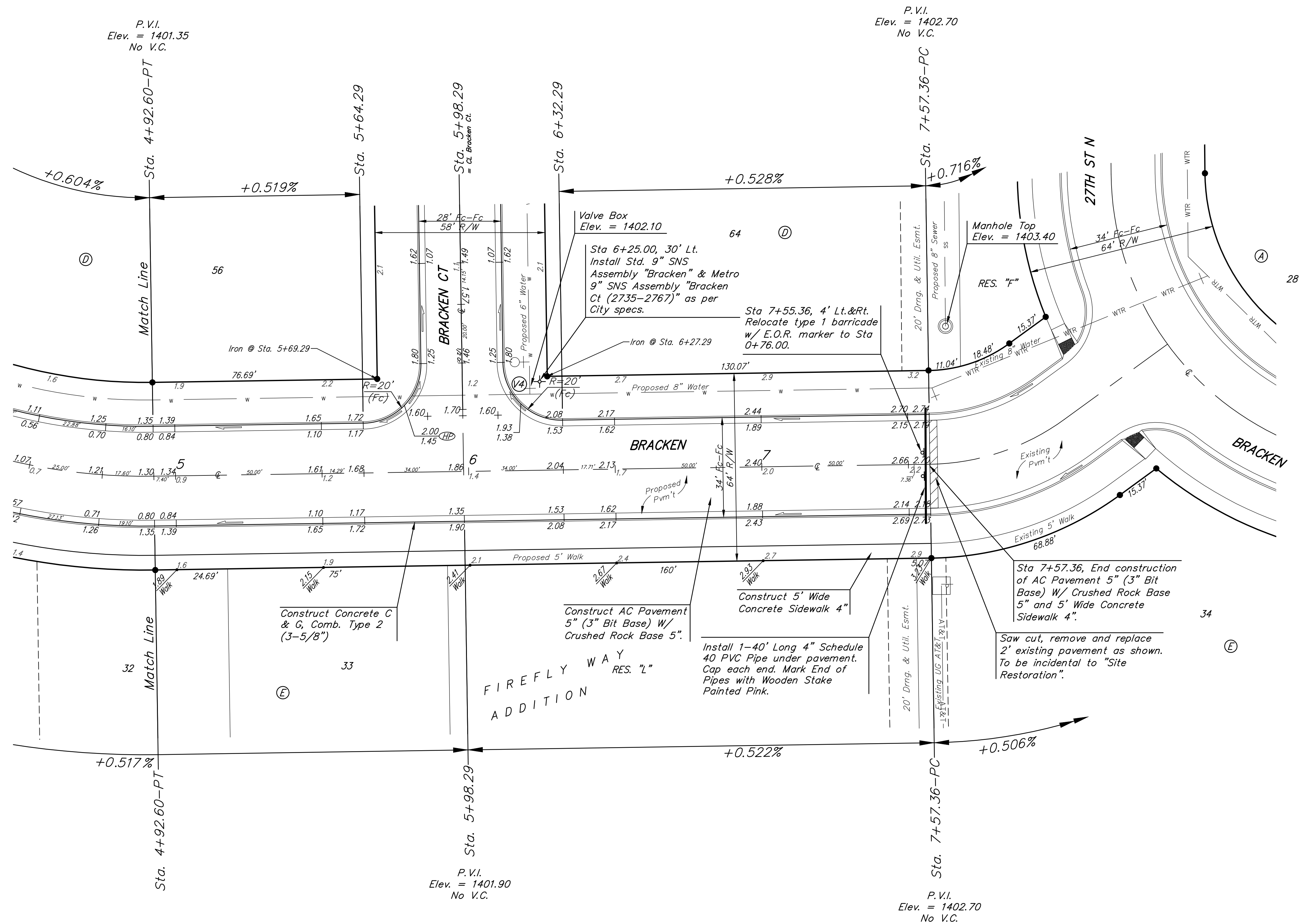
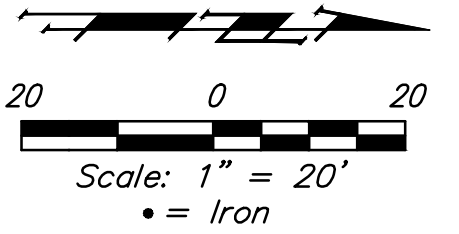


BENCHMARKS:
 BM#1: RR spike in high line pole, 40' west and 30' south of Lot 60, Block D, Firefly Way Addition.
 Elev. = 1399.54 NAVD88

BM#2: Benchmark disc in top of curb, adjacent to fire hydrant 15' south of SE corner of Lot 2, Block C, Firefly Way Addition.
 Elev. = 1396.95 NAVD88

Baseline = CL Bracken



WATER VALVE LOCATION TABLE

VALVE NUMBER	STREET	BASELINE STATION	OFFSET DISTANCE	OFFSET DIRECTION
V4	Bracken	6+21.29	26'	Lt.

Paving contractor will be responsible to operate all water valves on the project, in the presence of the inspector, to ensure accessibility to the valves, and that all valves (except blowoffs) are left in the "ON" position when the project is completed.

NOTE: ROLL TYPE CURB & GUTTER (TYPE 2) TO BE CONSTRUCTED ON THE PAVEMENT SHOWN ON THIS SHEET. TOP OF CURB ELEVATIONS ARE GIVEN FOR FULL HEIGHT CURB (TYPE 4).

Baughman Company, P.A.
 ENGINEERING ARCHITECT PLANNING LANDSCAPE ARCHITECTURE
 1100 W. 10th St., Suite 200, Oklahoma City, Oklahoma 73106
 Phone: (405) 521-1100 Fax: (405) 521-1101
 www.baughman.com

FIREFLY WAY ADDITION
BRACKEN
 STREET IMPROVEMENTS

SHEET
3
 OF
29