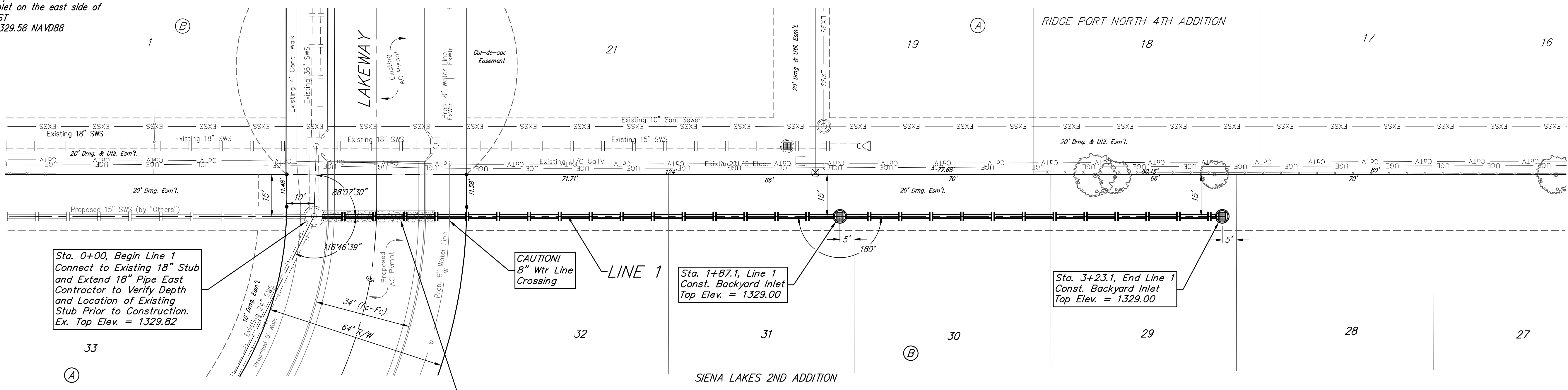
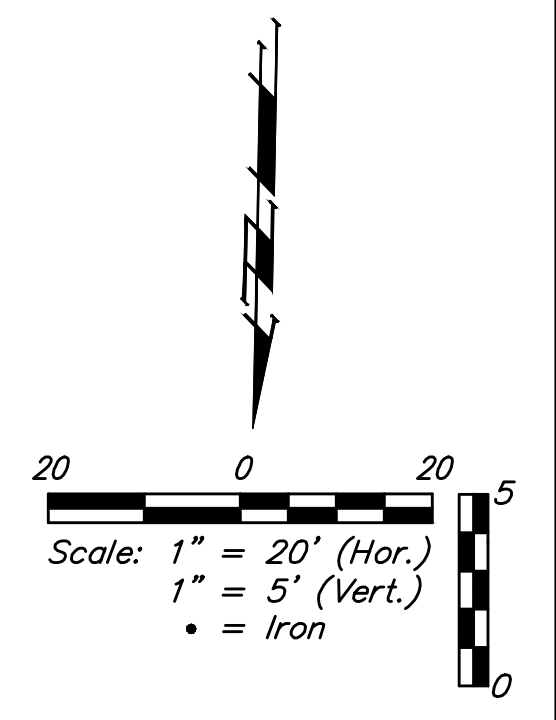


BENCHMARKS:
 Chiseled square at the end of the top of curb at the southeast corner of Ridge Port and 37th ST N.
 Elev. = 1333.05 NAVD88

Chiseled square on the south side of curb inlet on the east side of Lakeway ST
 Elev. = 1329.58 NAVD88



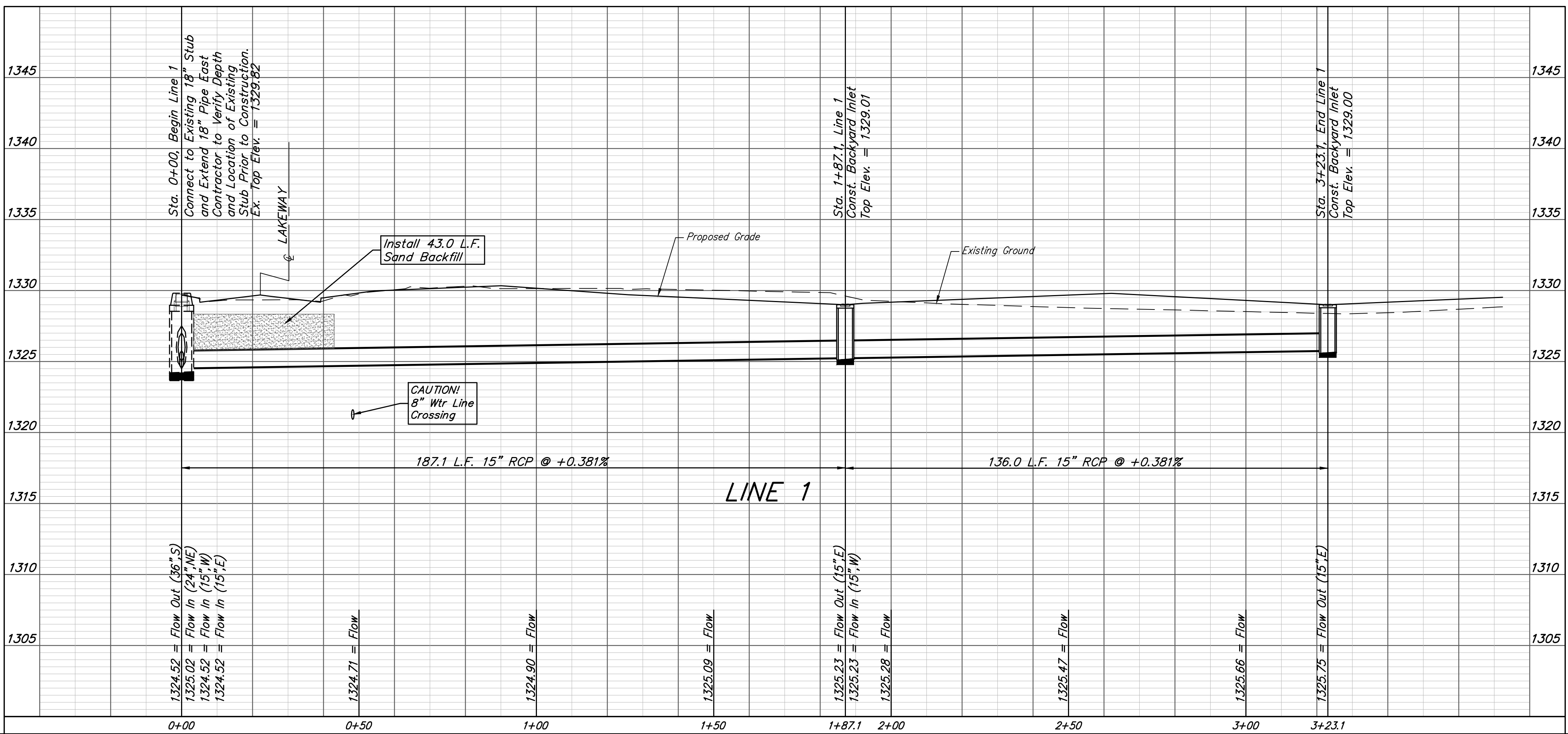
Sta. 0+00, Begin Line 1
 Connect to Existing 18" Stub
 and Extend 18" Pipe East
 Contractor to Verify Depth
 and Location of Existing
 Stub Prior to Construction.
 Ex. Top Elev. = 1329.82

CAUTION!
 8" Wtr Line
 Crossing

Sta. 1+87.1, Line 1
 Const. Backyard Inlet
 Top Elev. = 1329.00

Sta. 3+23.1, End Line 1
 Const. Backyard Inlet
 Top Elev. = 1329.00

Sta. 0+00 to Sta. 0+43.0
 Install 43.0 L.F. Sand Backfill
 per City Specifications.



1324.52 = Flow Out (36" S)
1325.02 = Flow In (24" NE)
1324.52 = Flow In (15" W)
1324.52 = Flow In (15" E)

1325.23 = Flow Out (15" E)
1325.23 = Flow In (15" W)
1325.28 = Flow

1325.66 = Flow

1325.75 = Flow Out (15" E)

	Siena Lakes 2nd Addition - Phase III	
	LINE 1 Storm Water Sewer Improvements	
<small>Baughman Company, P.A. 315 Ellis St. Wichita, KS 67211 P 316-262-7271 F 316-262-0149 ENGINEERING SURVEYING PLANNING LANDSCAPE ARCHITECTURE</small>		
PROJECT NUMBER 472-85422	DESIGN AEG	DRAWN JAK
REVISIONS:	APPROVED	DATE 1/14/2020
	SCALE Noted	SHEET 11 OF 29