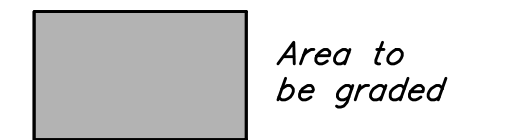
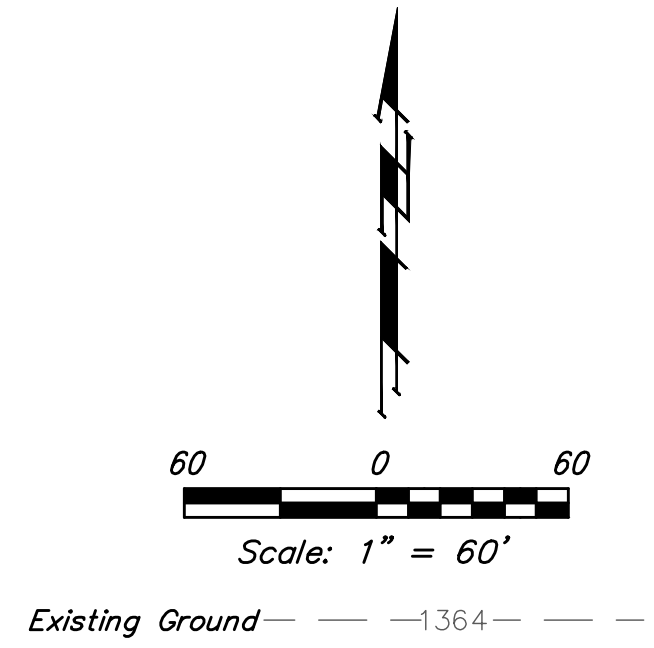
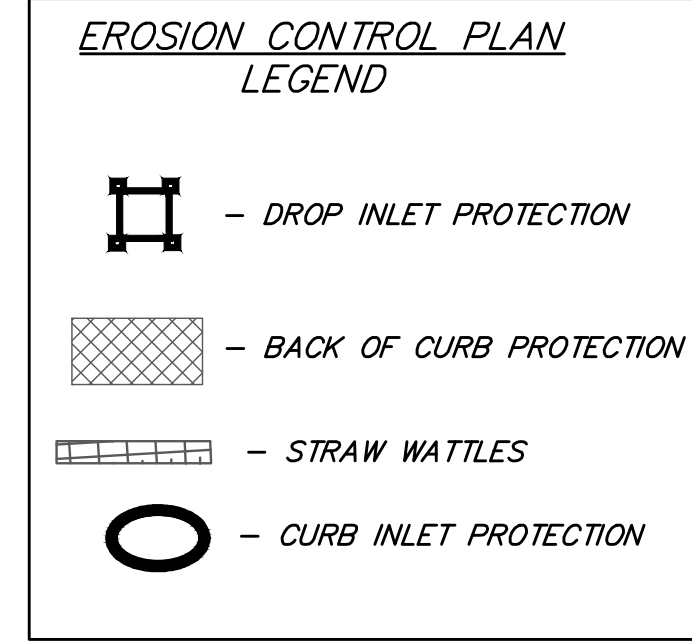


BENCHMARKS:
 Chiseled square at the end of the top of curb at the southeast corner of Ridge Port and 37th ST N.
 Elev. = 1333.05 NAVD88

Chiseled square on the south side of curb inlet on the east side of Lakeway ST.
 Elev. = 1329.58 NAVD88



- Mass Grading General Notes:**
- Excess material shall be removed from the site by the Contractor as directed by the Engineer. Earthwork quantities are unadjusted and are for reference only. All cost associated with mass grading shall be incidental to lump sum bid item "Mass Grading".
 - Compaction of 95% Std. Proctor Density shall be obtained in all areas, moisture content of optimum to 4%.
 - It shall be the Contractor's responsibility to protect existing utilities during mass grading. Any damage done to these systems by Contractor or subcontractor shall be repaired at no additional cost to the project.
 - All areas disturbed during construction shall be seeded, mulched, and fertilized as per Cover Sheet General Notes.

EARTH WORK TOTALS (Unadjusted)
 (for information only)

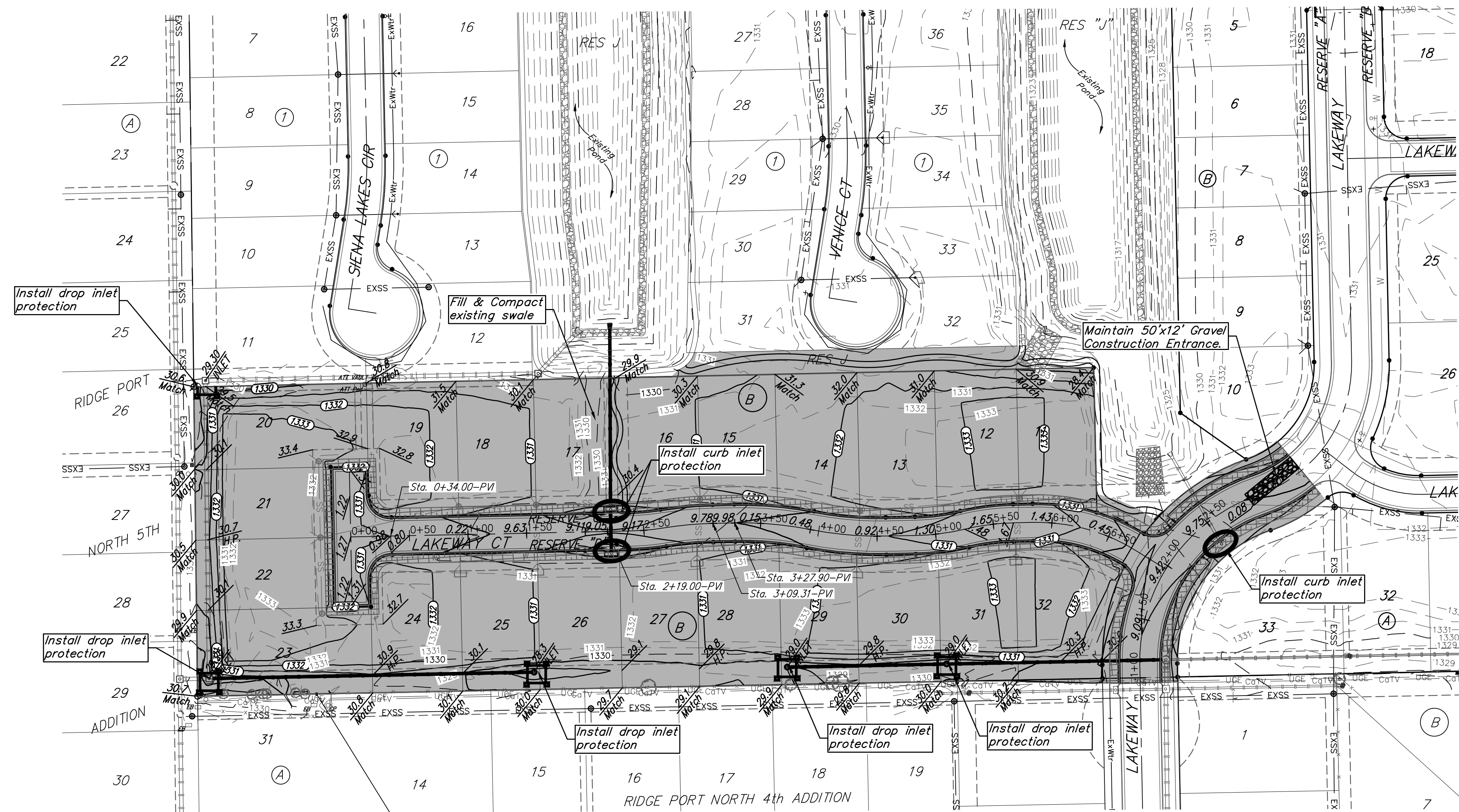
	C.Y. Cut	C.Y. Fill
Mass Grading	2,066	1,891
Street R/W's	518	757
Total Earthwork	2,584	2,648

Earthwork quantities are for reference only. All cost associated with earthwork shall be included in C.Y. "Excavation" & L.S. "Grading, Mass".

EROSION CONTROL MEASURE	INSTALL	MAINTAIN
BACK OF CURB PROTECTION (LF)	1,960	0
CURB INLET BARRIER (EA)	3	0
CONSTRUCTION ENTRANCE (EA)	0	1
DROP INLET BARRIER (EA)	5	0
MAINTAIN EROSION CONTROL BMP's (LS)	0	1

* ALL EXISTING BMP's INCLUDING CONSTRUCTION ENTRANCE, SEDIMENT BARRIERS, SILT FENCE, CUT-OFF TRENCH, AND EROSION CONTROL MAT SHALL BE MAINTAINED AND REPAIRED IF NECESSARY.

- EROSION CONTROL NOTES:**
- Contractor shall make sure all erosion control is in place before project is accepted. This plan represents the minimum standard. Any additional erosion control measures shall be installed by the Contractor as needed.
 - Removal of Gravel Construction Entrance for pavement construction shall be included in bid item "Site Clearing & Restoration"
 - All areas disturbed during construction shall be seeded, mulched, and fertilized as per Cover Sheet General Notes.
 - This plan is Not to be used as a comprehensive grading plan. All spot elevations are proposed & subject to change.



Baughman Siena Lakes 2nd Addition - Phase III
MASS GRADING & EROSION CONTROL
 Street / SWS Improvements

Baughman Company, P.A. 315 Ellis St. Wichita, KS 67211 P 316-262-7271 F 316-262-0149
 ENGINEERING | SURVEYING | PLANNING | LANDSCAPE ARCHITECTURE

PROJECT NUMBER 472-85422	DESIGN AEG	DRAWN JAK
REVISIONS:	APPROVED	DATE 2/03/2020
	SCALE Noted	SHEET 14 OF 29

C:\Projects\Siena Lakes 2nd_1805\F317\Engineering\Phase 3\Str_1904E159\STR PLANS.dwg