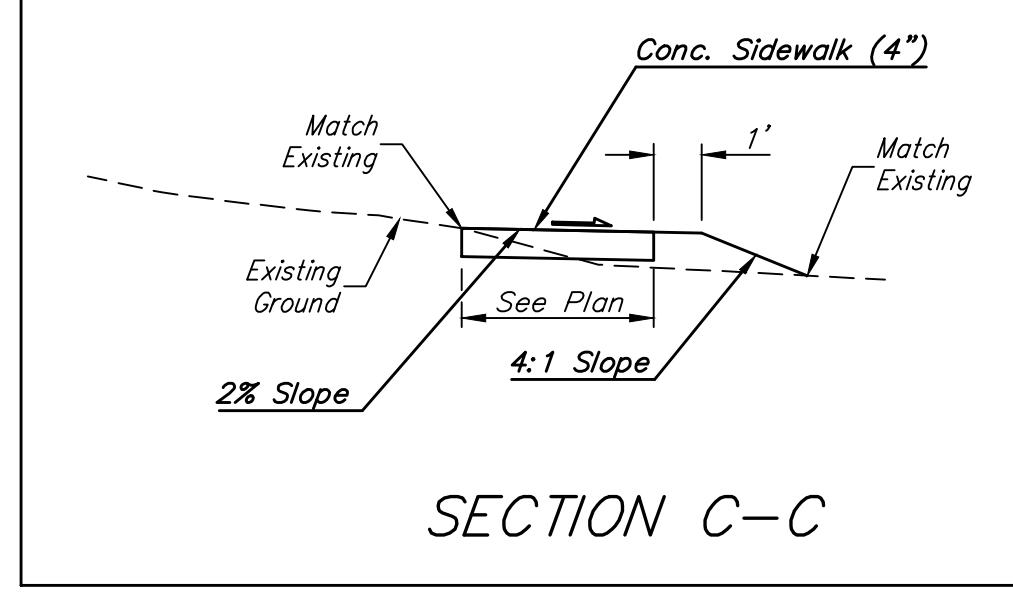
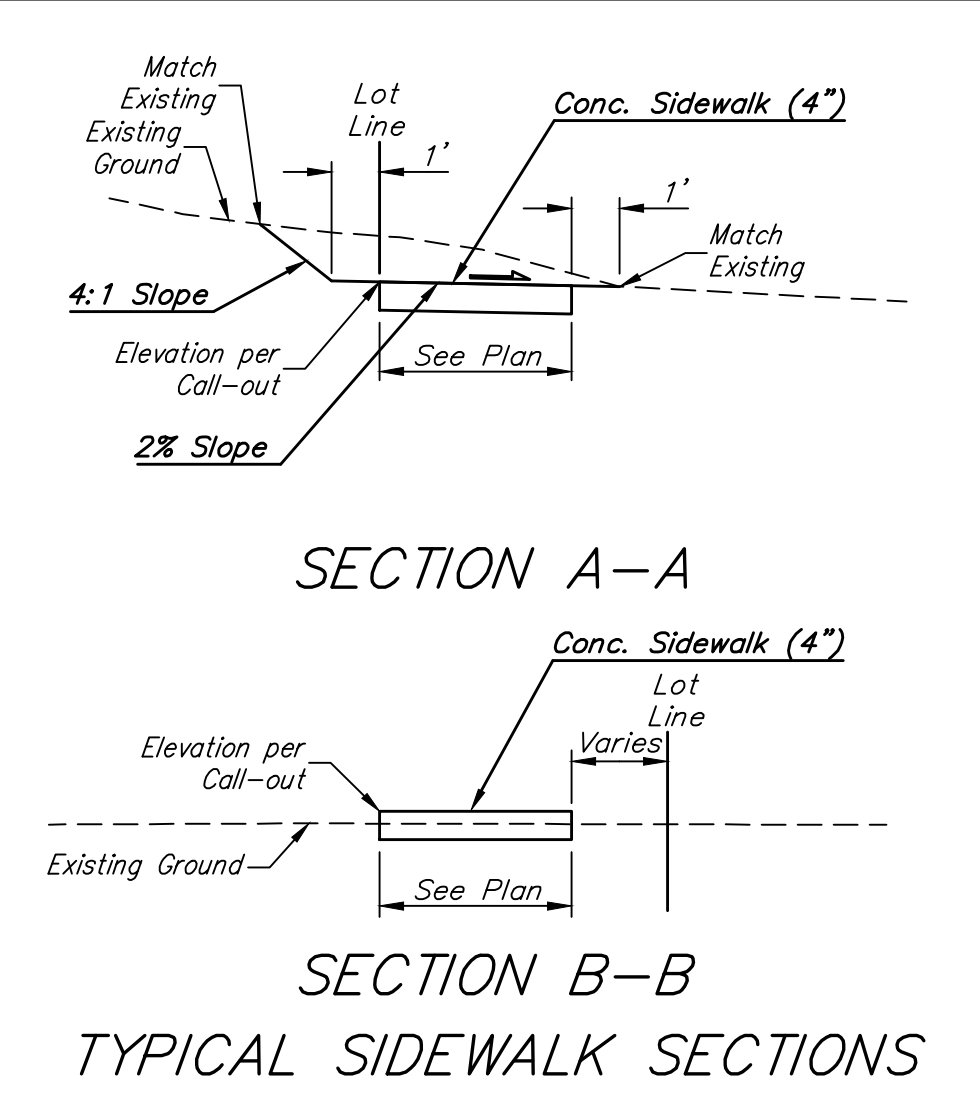
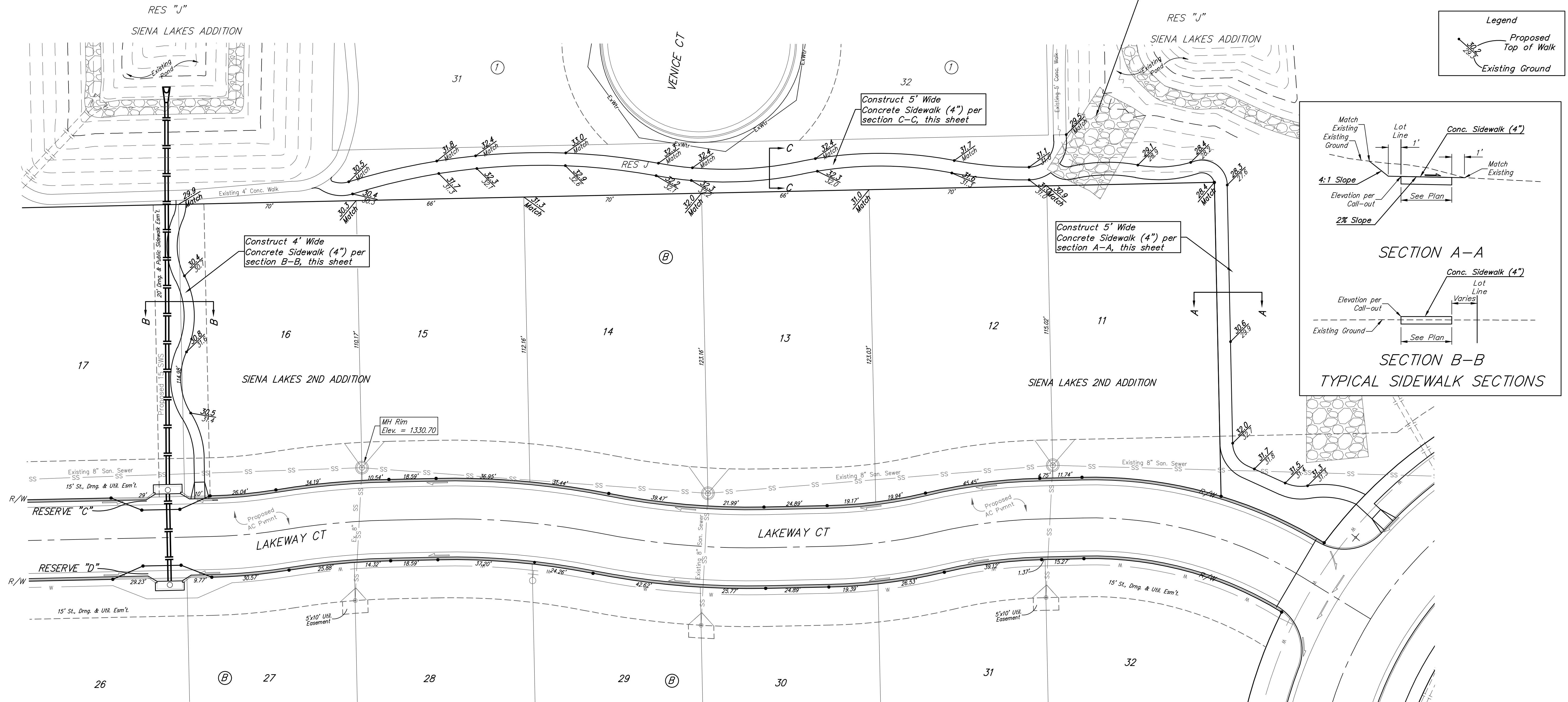
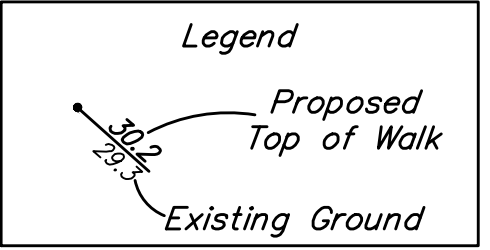
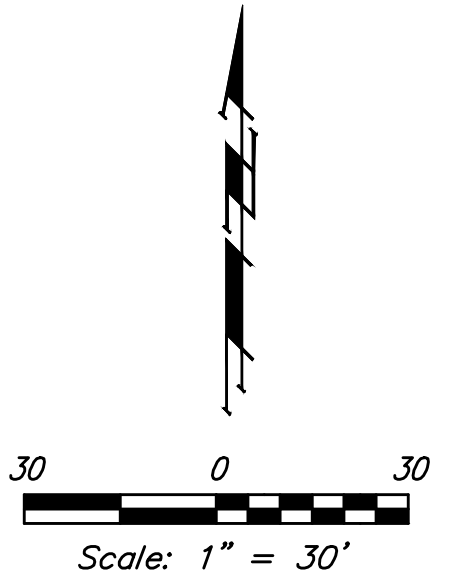


BENCHMARKS:
 Chiseled square at the end of the top of curb at the southeast corner of Ridge Port and 37th ST N.
 Elev. = 1333.05 NAVD88

Chiseled square on the south side of curb inlet on the east side of Lakeway ST
 Elev. = 1329.58 NAVD88

NOTE:
 The final sidewalk layout and elevations will be determined at time of construction by an onsite meeting with the Project Engineer, Developer, and Contractor. The Contractor shall include in their bid costs for handforming all of the sidewalk for this job. Slip formed sidewalk by machine will be allowed where possible.

Remove existing rip-rap as necessary for sidewalk construction. Replace rip-rap on pond sideslope of walk. Other rip-rap may be reused on-site for SWS Line 2.



		Siena Lakes 2nd Addition - Phase III	
		SIDEWALK PLAN	
Street / SWS Improvements			
<small>Baughman Company, P.A. 315 Ellis St. Wichita, KS 67211 P 316-262-7271 F 316-262-0149 ENGINEERING SURVEYING PLANNING LANDSCAPE ARCHITECTURE</small>			
PROJECT NUMBER 472-85422	DESIGN AEG	DRAWN JAK	
REVISIONS:	APPROVED	DATE 2/03/2020	
	SCALE Noted		
			15 OF 29