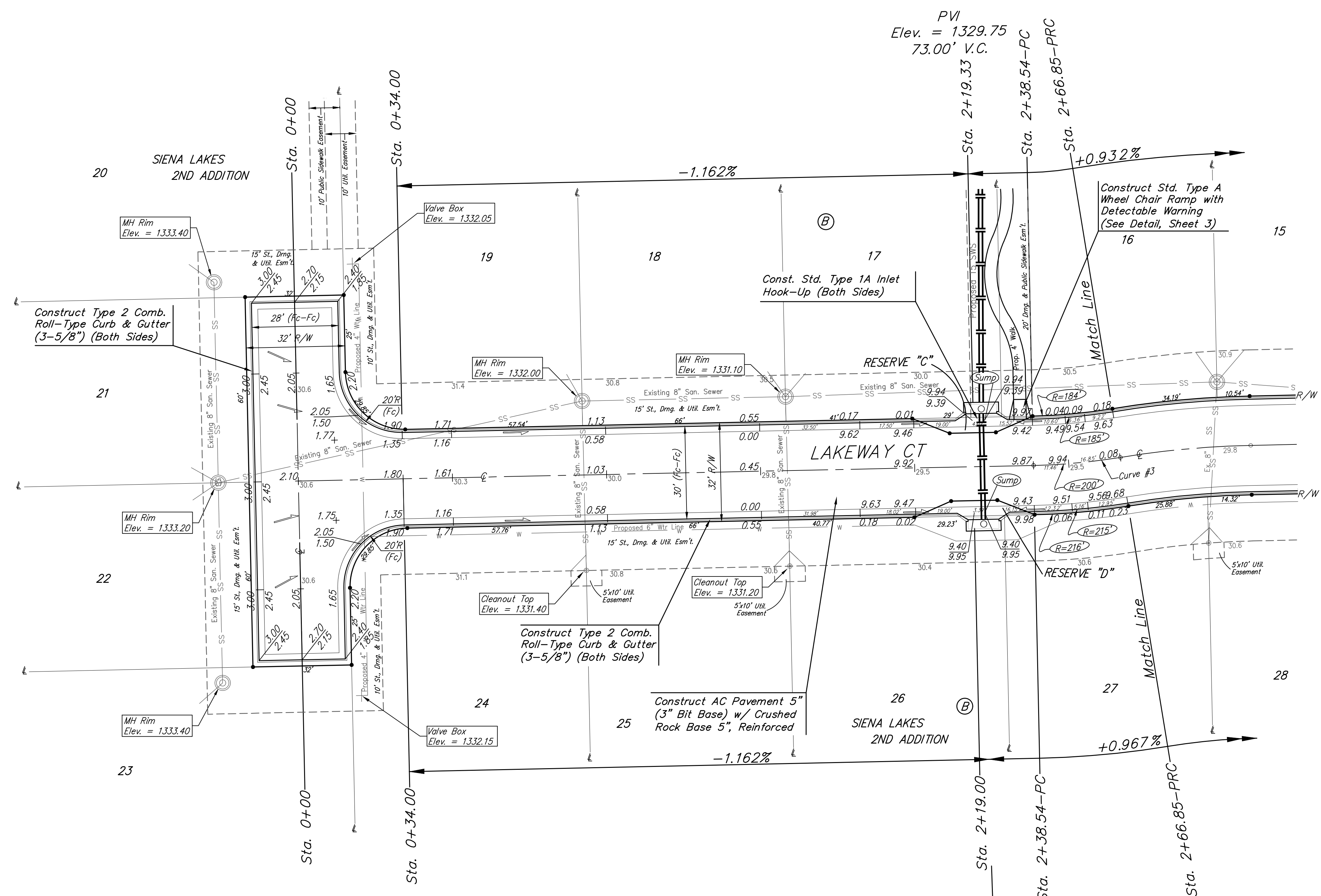
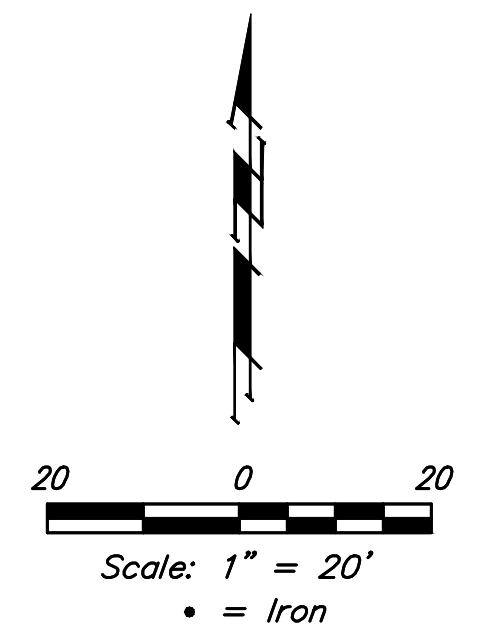


**BENCHMARKS:**  
 Chiseled square at the end of the top of curb at the southeast corner of Ridge Port and 37th ST N.  
 Elev. = 1333.05 NAVD88

Chiseled square on the south side of curb inlet on the east side of Lakeway ST  
 Elev. = 1329.58 NAVD88



Curve #3  
 Curve Data Based on Centerline

Station	Arc	Face Chord Lengths		Defl.	Total Defl.
		8' Left	8' Right		
2+38.54	-	-	-	0'00'00"	0'00'00"
2+50.00	11.46'	10.14'	12.78'	1'38'29"	1'38'29"
2+66.85	16.85'	14.91'	18.78'	2'24'49"	4'03'18"

Roll type curb & gutter to be constructed on the pavement on this sheet.  
 Top of curb elevation are given for full height curb.

	Sienna Lakes 2nd Addition - Phase III	
	<b>LAKEWAY CT</b>	
Sta. 0+00 to Sta. 2+66.85		
<small>Baughman Company, P.A. 315 Ellis St. Wichita, KS 67211 P 316-262-7271 F 316-262-0149          ENGINEERING   SURVEYING   PLANNING   LANDSCAPE ARCHITECTURE</small>		
PROJECT NUMBER 472-85422	DESIGN AEG	DRAWN JAK
REVISIONS:	APPROVED	DATE 2/03/2020
	SCALE Noted	SHEET
		<b>8 OF 29</b>