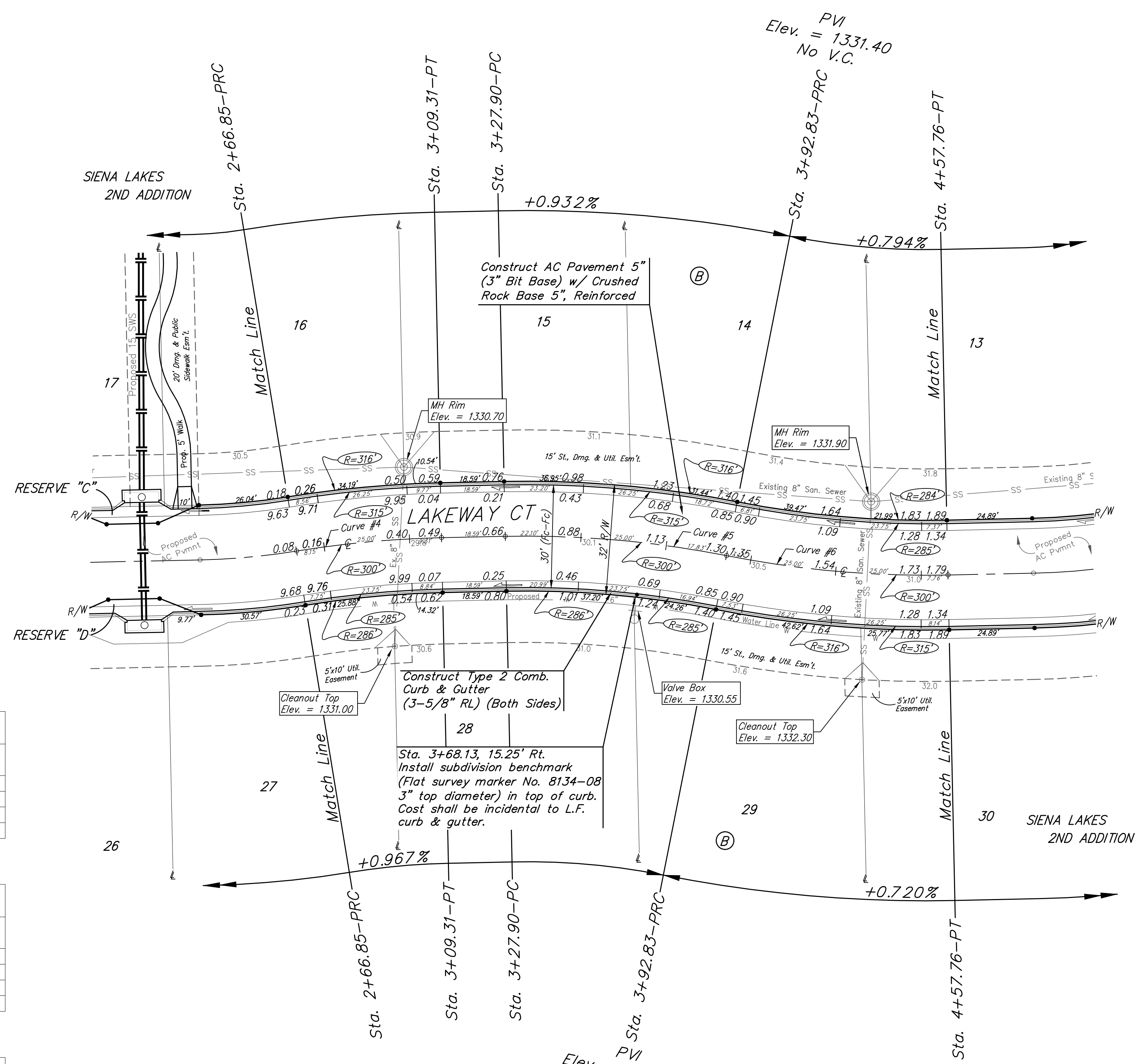
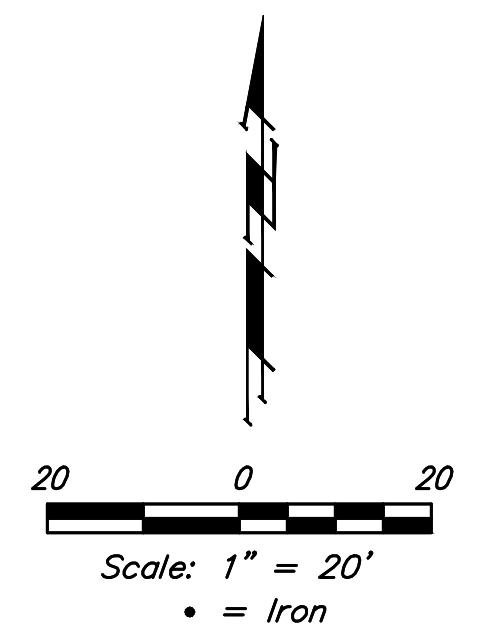


BENCHMARKS:
 Chiseled square at the end of the top of curb at the southeast corner of Ridge Port and 37th ST N.
 Elev. = 1333.05 NAVD88

Chiseled square on the south side of curb inlet on the east side of Lakeway ST
 Elev. = 1329.58 NAVD88



Curve #4
 Curve Data Based on Centerline
 Rad. = 300' Delta = 8°06'36" Tangent = 21.27'
 Arc = 42.46' L.C. = 42.43' Def./Ft. = 5.73010 Min.

Station	Arc	Face Chord Lengths		Defl.	Total Defl.
		8' Left	8' Right		
2+66.85	-	-	-	0'00"00"	0'00"00"
2+75.00	8.15'	8.78'	7.53'	0'46"42"	0'46"42"
3+00.00	25.00'	26.91'	23.08'	2'23"15"	3'09"57"
3+09.31	9.31'	10.02'	8.60'	0'53"21"	4'03"18"

Curve #5
 Curve Data Based on Centerline
 Rad. = 300' Delta = 12°24'00" Tangent = 32.59'
 Arc = 64.93' L.C. = 64.80' Def./Ft. = 5.72925 Min.

Station	Arc	Face Chord Lengths		Defl.	Total Defl.
		8' Left	8' Right		
3+27.90	-	-	-	0'00"00"	0'00"00"
3+50.00	22.10'	23.79'	20.40'	2'06"37"	2'06"37"
3+75.00	25.00'	26.91'	23.08'	2'23"14"	4'29"51"
3+92.83	17.83'	19.19'	16.46'	1'42"09"	6'12"00"

Curve #6
 Curve Data Based on Centerline
 Rad. = 300' Delta = 12°24'00" Tangent = 32.59'
 Arc = 64.93' L.C. = 64.80' Def./Ft. = 5.72925 Min.

Station	Arc	Face Chord Lengths		Defl.	Total Defl.
		8' Left	8' Right		
3+92.83	-	-	-	0'00"00"	0'00"00"
4+00.00	7.17'	6.62'	7.72'	0'41"05"	0'41"05"
4+25.00	25.00'	23.08'	26.91'	2'23"14"	3'04"19"
4+50.00	25.00'	23.08'	26.91'	2'23"13"	5'27"32"
4+57.76	7.76'	7.16'	8.35'	0'44"28"	6'12"00"

Subdivision Benchmarks

Street & Station	Location Description	Elevation
Lakeway Ct 3+68.13, 15.25' Rt.	Adjacent to Fire Hydrant North of the NE Cor., Lot 28, Blk B	

Roll type curb & gutter to be constructed on the pavement on this sheet.
 Top of curb elevation are given for full height curb.

Baughman Siena Lakes 2nd Addition - Phase III
LAKEWAY CT
 Sta. 2+66.85 to Sta. 4+57.76

Baughman Company, P.A. 315 Ellis St. Wichita, KS 67211 P 316-262-7271 F 316-262-0149
 ENGINEERING | SURVEYING | PLANNING | LANDSCAPE ARCHITECTURE

PROJECT NUMBER 472-85422	DESIGN AEG	DRAWN JAK
REVISIONS:	APPROVED	DATE 2/03/2020
	SCALE Noted	SHEET 9 OF 29

C:\Projects\Siena Lakes 2nd_1805P377\Engineering\Phase 3\Str_1904E139\STR PLANS.dwg