

MARCD REVIEW
STAMP LOCATION

GENERAL NOTES

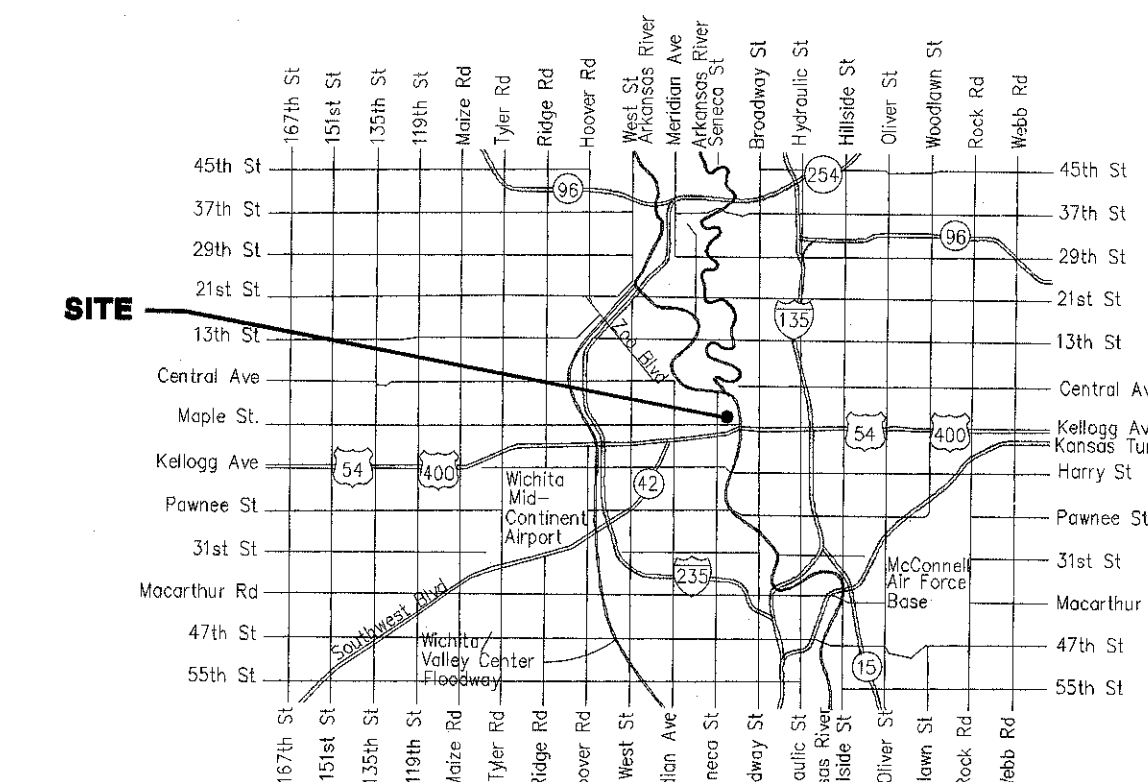
- THE CONTRACTOR SHALL COMPLY WITH ALL APPLICABLE SAFETY REGULATIONS. ALL CONSTRUCTION SHALL BE COMPLETED FOLLOWING CURRENT CITY STANDARD SPECIFICATIONS AND SPECIAL PROVISIONS.
- CONTRACTOR WILL BE REQUIRED TO PROVIDE NOTICE TO UTILITY COMPANIES A MINIMUM OF SEVENTY-TWO (72) HOURS PRIOR TO ANY EXCAVATION, AS FOLLOWS:
KANSAS ONE-CALL 687-2470
THE CONTRACTOR MUST NOTIFY THE FOLLOWING IN CASE OF AN EMERGENCY:
AT&T 1-800-246-9464
BLACK HILLS ENERGY 1-800-694-8989
CITY OF WICHITA WATER & SEWER 1-316-219-6921
CITY OF WICHITA STORMWATER 1-316-268-4090
CITY OF WICHITA TRAFFIC 1-316-268-4034
COX COMMUNICATIONS 1-888-249-3530
KANSAS GAS SERVICE 1-888-482-4950
WESTAR ENERGY 1-800-544-4857
- UTILITY SERVICE LINES, POLES, ETC. ARE TO BE ADJUSTED AS NECESSARY BY OTHERS PRIOR TO CONSTRUCTION UNLESS THE PLANS SPECIFICALLY CALL FOR THEIR ADJUSTMENT BY THE CONTRACTOR OR UNLESS THE PLANS SPECIFICALLY IDENTIFY A UTILITY TO BE ADJUSTED BY ITS OWNER DURING CONSTRUCTION. EXISTING UTILITIES AND THEIR LOCATION, AS SHOWN ON THE PLANS, REPRESENTS THE BEST INFORMATION OBTAINABLE FOR DESIGN. THE CONTRACTOR WILL BE REQUIRED TO WORK AROUND EXISTING UTILITIES WITHIN THE RIGHT-OF-WAY WHICH DO NOT CONFLICT WITH PROPOSED CONSTRUCTION.
- RUBBLE FROM THE REMOVAL OF MISCELLANEOUS STRUCTURES AND EXCESS EXCAVATION WHICH IS TO BE WASTED SHALL BE DISPOSED OF ON SITES TO BE PROVIDED BY THE CONTRACTOR. THESE SITES SHALL BE APPROVED BY THE ENGINEER AS TO SUITABILITY, APPEARANCE AND SITE LOCATION. LOCATIONS, IN THE OPINION OF THE ENGINEER, THAT WILL LEAVE AN UNSIGHTLY APPEARANCE WILL NOT BE APPROVED. ALL DISPOSAL SITES MUST BE APPROVED BY THE KANSAS DEPARTMENT OF HEALTH AND ENVIRONMENT. MATERIAL EITHER STOCKPILED OR DISPOSED OF IN A FLOOD PLAIN WILL REQUIRE A KANSAS STATE BOARD OF AGRICULTURE PERMIT. ANY MATERIAL DUMPED IN WATERS OF THE UNITED STATES OR WETLANDS IS SUBJECT TO U.S. CORPS. OF ENGINEERS PERMITTING REGULATIONS. ANY MATERIAL BURIED OR STOCKPILED BEYOND APPROVED CONSTRUCTION LIMITS WILL REQUIRE ADDITIONAL ARCHAEOLOGICAL INVESTIGATIONS UNLESS BURIED IN A PREVIOUSLY APPROVED BORROW LOCATION.
- TREES AND SHRUBS IN PUBLIC RIGHT-OF-WAY WHICH ARE IN DIRECT CONFLICT WITH PROPOSED NEW CONSTRUCTION SHALL BE REMOVED BY THE CONTRACTOR WITH THE CITY ENGINEER'S APPROVAL. TREES AND SHRUBS WHICH ARE NOT IN DIRECT CONFLICT WITH PROPOSED NEW CONSTRUCTION SHALL BE SAVED AND PROTECTED FROM DAMAGE.
- THE CONTRACTOR SHALL GIVE ALL PROPERTY OWNERS AND/OR TENANTS OF DEVELOPED PROPERTY ADJUTING THE CONSTRUCTION OF THIS PROJECT A MINIMUM OF TEN (10) DAYS NOTICE PRIOR TO START OF CONSTRUCTION.
- THE CONTRACTOR SHALL BE RESPONSIBLE FOR PRESERVING PROPERTY IRONS. THE CONTRACTOR WILL BE REQUIRED TO RE-ESTABLISH ANY PROPERTY IRONS WHICH ARE DAMAGED OR DESTROYED BY HIS CONSTRUCTION OPERATIONS. SUCH IRONS SHALL BE RE-ESTABLISHED BY A LICENSED LAND SURVEYOR IN ACCORDANCE WITH STATE LAWS.
- THE ENGINEERING DIVISION SHALL FIELD LOCATE WATER VALVES ONE TIME DURING CONSTRUCTION WHEN REQUESTED BY THE CONTRACTOR. IT SHALL BE THE CONTRACTOR'S RESPONSIBILITY TO PRESERVE SUCH FIELD LOCATIONS DURING THE CONSTRUCTION PROCESS. WATER VALVES, VALVE BOXES OR FIRE HYDRANTS DAMAGED DURING CONSTRUCTION SHALL BE REPAIRED BY CONTRACTOR AT HIS OWN EXPENSE. VALVE BOXES AND WATER METERS WITHIN THE PROJECT LIMITS SHALL BE ADJUSTED TO MATCH FINAL GRADES BY THE CONTRACTOR.
- THE CONTRACTOR SHALL NOTIFY THE INSPECTING ENGINEER AND TOM MASON AT 316-268-4574 WITH THE CITY OF WICHITA WITH THE ANTICIPATED CONSTRUCTION START DATE AND NOTIFY THEM OF PROJECT COMPLETION. STAKING AND INSPECTION FOR THIS PROJECT WILL BE THE RESPONSIBILITY OF THE CONTRACTOR.
- IF TRAFFIC WILL BE IMPACTED BY CONSTRUCTION, A TRAFFIC CONTROL PLAN MUST BE SUBMITTED AND APPROVED BY THE CITY TRAFFIC ENGINEER, BRIAN COON AT traffice@wichita.gov BEFORE CONSTRUCTION CAN BEGIN. THE CONTRACTOR SHALL BE RESPONSIBLE FOR ALL TRAFFIC CONTROL MEASURES TO FACILITATE CONSTRUCTION. ALL CONSTRUCTION ZONE MARKINGS AND SIGNAGE SHALL CONFORM TO THE LATEST VERSION OF THE MANUAL ON UNIFORM TRAFFIC CONTROL DEVICES (MUTCD) AS PUBLISHED BY THE US DEPT. OF TRANSPORTATION, FEDERAL HIGHWAY ADMINISTRATION. ALL COSTS ASSOCIATED WITH CONSTRUCTION MARKINGS AND SIGNAGE SHALL BE THE CONTRACTORS RESPONSIBILITY.
- ALL ELEVATIONS SHOWN ARE NAVD 88.
- ALL AREAS DISTURBED DURING CONSTRUCTION THAT WILL NOT BE UNDER PROPOSED PAVEMENT SHALL BE RESTORED TO MATCH EXISTING CONDITIONS.

- ANY SIDEWALK, DRIVE APPROACH, CURB, OR STREET PAVEMENT REMOVED TO CONSTRUCT PROJECT MUST HAVE A PAVEMENT CUT PERMIT AND BE REPLACED BY THE CITY CONTRACTOR. PERMITS CAN BE OBTAINED BY CALLING 316-268-4501 OR 316-268-4480.
- ALL APPLICABLE FEES (TAP, EQUITY, IN LIEU OF & MAIN BENEFIT) MUST BE PAID BEFORE ANY CONNECTIONS CAN BE MADE ON THIS PROJECT. QUOTES CAN BE OBTAINED ON FEES BY CALLING 316-268-4555.
- CITY MAINTENANCE OF SANITARY SEWER MAINS ENDS AT LAST STRUCTURE WITHIN THE EASEMENT OR RIGHT-OF-WAY.
- ALL STUBS AND CAPPED PIPES SHALL BE LOCATED WITH GREEN PLASTIC TAPE IN THE SAME MANNER AS RISERS.
- CONNECTING TO EXISTING MANHOLES:
PRIOR TO LAYING SEWER LINES USING EXISTING STUBS IN EXISTING MANHOLES, THE CONTRACTOR SHALL EXPOSE AND VERIFY THE ELEVATION, GRADE AND ALIGNMENT OF EXISTING STUBS AND NOTIFY THE ENGINEER OF ANY DEVIATION FROM THE PLANS. WHERE THE STUB IS UNUSABLE DUE TO ELEVATION GRADE OR ALIGNMENT, THE CONTRACTOR SHALL REMOVE THE STUB AND PLUG THE HOLE, AND RESHAPE THE EXISTING MANHOLE INVERT TO PROVIDE SMOOTH FLOW. WHERE CONNECTING TO AN EXISTING MANHOLE THAT DOES NOT HAVE AN EXISTING STUB, THE CONTRACTOR SHALL CORE CUT INTO EXISTING MANHOLE WALL TO MAKE CONNECTION USING APPROVED WATER STOP GASKET, AND RESHAPE THE EXISTING MANHOLE INVERT TO PROVIDE SMOOTH FLOW. THE COST TO CONNECTING TO EXISTING MANHOLES IS INCIDENTAL TO THE PROJECT.
- CONTRACTOR SHALL LIMIT THE EXTENT OF TRENCH OPEN OVERNIGHT AND WEEKENDS TO LESS THAN 50 FEET.
- CONTRACTOR SHALL PROVIDE POSITIVE DRAINAGE AWAY FROM ALL MANHOLE COVERS.
- THE CONTRACTOR SHALL PREVENT ANY CONSTRUCTION DEBRIS FROM ENTERING THE EXISTING SANITARY SEWER DURING CONSTRUCTION.
- THE CONTRACTOR SHALL BE RESPONSIBLE FOR MAINTAINING CONTINUOUS FLOW OF SEWAGE THROUGH CONSTRUCTION. CONTRACTORS PROPOSED METHOD FOR MAINTAINING SEWAGE FLOW SHALL BE SUBMITTED AND APPROVED BY THE SEWER MAINTENANCE DIVISION (316-268-4073) PRIOR TO STARTING AND BY-PASSING OF SEWAGE FLOWS.
- ANY OVER EXCAVATION FROM MANHOLE AND PIPE REMOVAL SHALL BE BACKFILLED WITH AB-3 COMPACTED TO 90-95% ASTM D698.
- THE CONTRACTOR SHALL PROTECT FROM DAMAGE AND SUPPORT EXISTING UTILITIES THROUGH CONSTRUCTION AS APPROVED BY THE UTILITY OWNER AND THE ENGINEER AT THE CONTRACTORS EXPENSE.
- THE CONTRACTOR SHALL INSTALL AND/OR MAINTAIN EROSION CONTROL METHODS AS SPECIFIED. THE GENERAL LOCATION OF THE REQUIRED EROSION CONTROL IS ILLUSTRATED ON THE EROSION CONTROL PLAN. THE CONTRACTOR SHALL BE RESPONSIBLE FOR MAINTAINING THE EROSION CONTROL SHOWN THROUGH THE COMPLETION OF THIS PROJECT. INSTALLATION OF THESE BMP'S DOES NOT RELIEVE THE CONTRACTOR OF THE RESPONSIBILITY OF ABATING SOIL EROSION.
- ALL UTILITY BACKFILL UNDER EXISTING OR PROPOSED PAVEMENT SHALL BE JETTED SAND PER SPECIFICATIONS.

SANITARY SEWER IMPROVEMENTS to serve ENTERTAINMENT VENUE AND MULTI - SPORT STADIUM

300 SYCAMORE ST.
CITY OF WICHITA, KANSAS

Gary Janzen, P.E. City Engineer
Project Number
2374 PPS (628131)



Vicinity Map

SHEET INDEX

SHEET NO. CU201	PPS TITLE SHEET
SHEET NO. CU202	PPS KEY MAP
SHEET NO. CU203-204	SANITARY SEWER LINE NO. 1
SHEET NO. CU205-207	SANITARY SEWER LINE NO. 2
SHEET NO. CU208	SANITARY SEWER LINE NO. 3 AND LINE NO. 4
SHEET NO. CU209	PRECAST SANITARY SEWER MANHOLE
SHEET NO. CU210	MANHOLE FRAME AND COVER
SHEET NO. CU211	EROSION CONTROL PLAN
SHEET NO. CU212	VERTICAL RISER ASSEMBLY SEWER DETAIL SANITARY SEWER LINE NO. 2B AND LINE NO. 2C

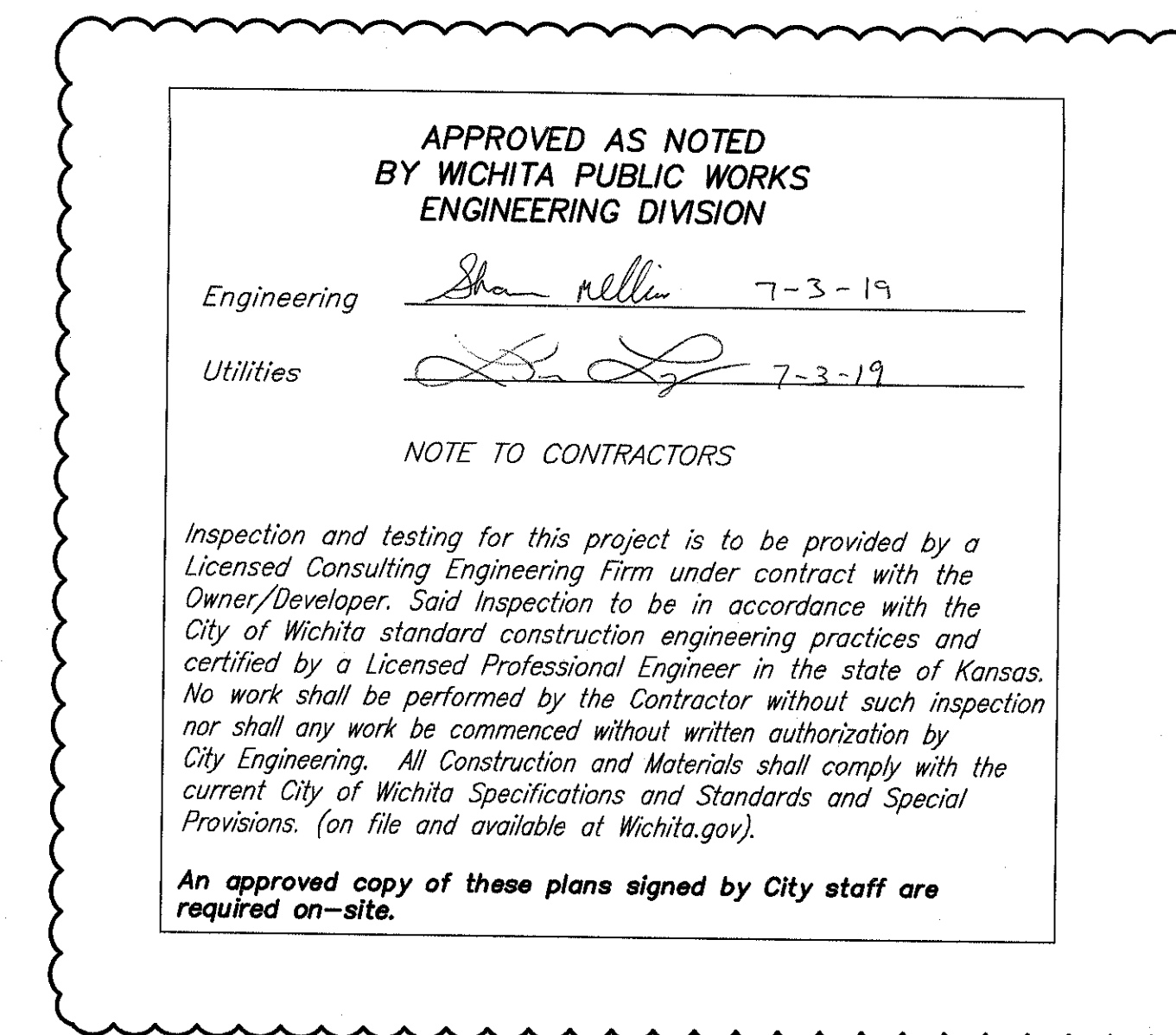
REFERENCE EROSION CONTROL DETAILS FOUND AT
<http://www.wichita.gov/PWU/Pages/Regulations.aspx#Stormwater>

SEE KEY MAP FOR BENCHMARKS,
CONTROL POINTS, AND PROPERTY CORNERS.

JULY 2019

AS-BUILT PLAN -BUILT PER PLAN

CONTRACTOR: DONDLINGER & SONS
PROJECT ENG: MARK DOHR/DONDLINGER
PR COW: PAUL GUNZELMAN
PR COW: STEVE DEGENHARDT
INSPECTOR: COW/DERRICK HICKS
DATE: MARCH 12, 2020



APPROVED AS NOTED
BY WICHITA PUBLIC WORKS
ENGINEERING DIVISION

Engineering *Shan Miller* 7-3-19

Utilities *Shan Miller* 7-3-19

NOTE TO CONTRACTORS

Inspection and testing for this project is to be provided by a Licensed Consulting Engineering Firm under contract with the Owner/Developer. Said inspection to be in accordance with the City of Wichita standard construction engineering practices and certified by a licensed Professional Engineer in the state of Kansas. No work shall be performed by the Contractor without such inspection nor shall any work be commenced without written authorization by City Engineering. All Construction and Materials shall comply with the current City of Wichita Specifications and Standards and Special Provisions. (on file and available at Wichita.gov).

An approved copy of these plans signed by City staff are required on-site.

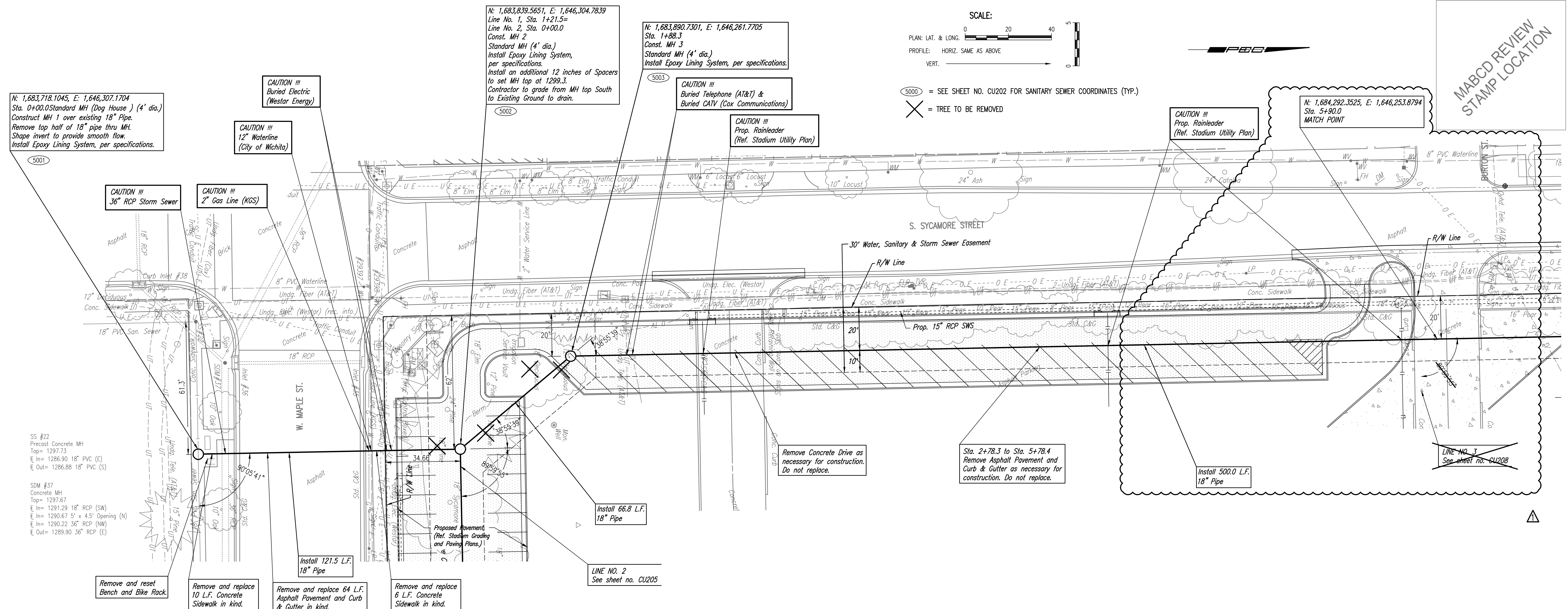
CITY OF WICHITA
Entertainment Venue and
Multi - Sport Stadium
300 Sycamore St.
Wichita, KS 67213

©2019
Schieffelin Johnson Cox Frey Architecture, Inc.
All Rights Reserved
These drawings and their contents, including, but not limited to, all concepts, designs, & items are the exclusive property of Schieffelin Johnson Cox Frey Architects, Inc. and may not be used or reproduced in any way without the express consent of SJCF.

REVISIONS
19 CPR20 06/21/19
20 CPR22 07/03/19

PROJECT NUMBER
5379.00
INITIAL RELEASE DATE
PPS TITLE

CU201

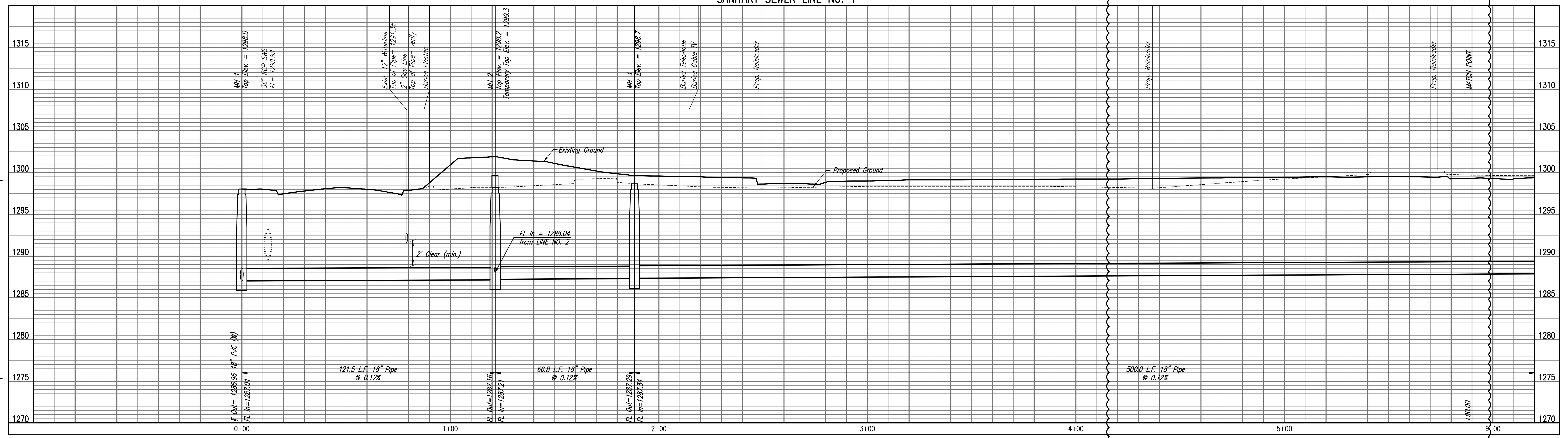


5446-033

5447-226

5447-227

SANITARY SEWER LINE NO. 1



MABCD REVIEW
 STAMP LOCATION

SJCF ARCHITECTURE | DLR GROUP | PEC, P.A.
 JE DUNN CONSTRUCTION | EBY CONSTRUCTION
 A DESIGN BUILD TEAM



PEC
 PROFESSIONAL ENGINEERING CONSULTANTS, P.A.
 303 SOUTH TOPEKA WICHITA,
 KS 67202-2891 www.pec.com

CITY OF WICHITA
 Entertainment Venue and
 Multi - Sport Stadium
 300 Sycamore St.
 Wichita, KS 67213

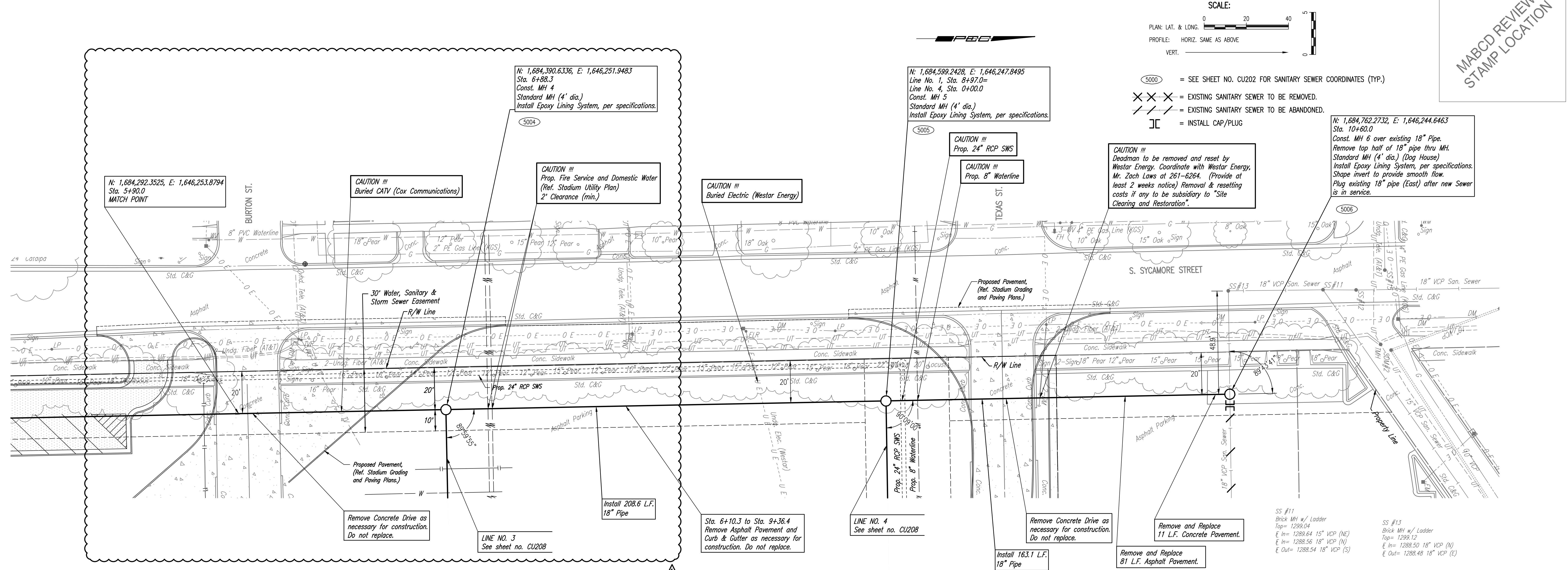
©2019
 Schaefer Software Co. Inc. All Rights Reserved.
 These drawings and their contents, including but not limited to, all concepts, designs, details are the exclusive property of Schaefer Software Co. Inc. (SSCI), and may not be used or reproduced in any way without the express consent of SSCI.

REVISIONS

PROJECT NUMBER	5379.00
PACKAGE NUMBER	
SANITARY SEWER LINE NO. 1	

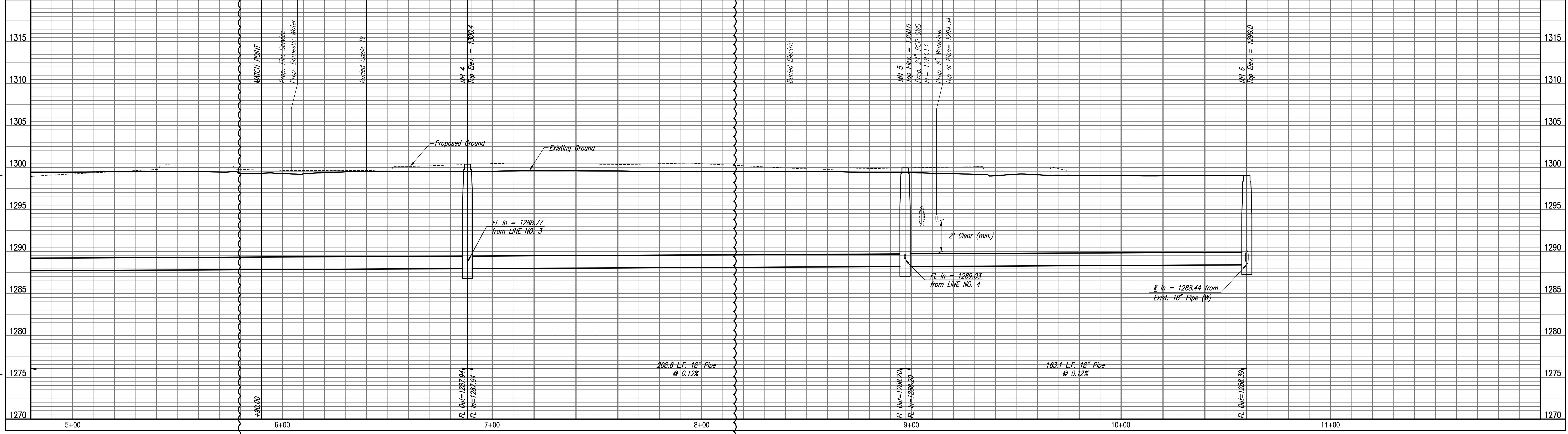
CITY OF WICHITA
 Private Project Number
 2374PPS (184604)
CU203

Save: 2-11-2019 4:53:27 PM by CSJ
 U:\Wichita-Final\2019\1877\2019_PEC\DWG\2374PPS\1877-0000-CU203



MABCD REVIEW
STAMP LOCATION

5447-228 SANITARY SEWER LINE NO. 1 5447-230 5447-231



Saved: 2-11-2019 4:54:17 PM by GSI...
 J:\Wichita-Facilities\2018\1807\0200-PEC\DWG\18071000-CU204

SJCF ARCHITECTURE | DLR GROUP | PEC, P.A.
 JE DUNN CONSTRUCTION | EBY CONSTRUCTION
 A DESIGN BUILD TEAM



CITY OF WICHITA
 Entertainment Venue and
 Multi - Sport Stadium
 300 Sycamore St.
 Wichita, KS 67213

©2019
 Scheffer Johnson Cox Frey Architects, Inc.
 All Rights Reserved.
 These drawings and their contents, including but not limited to, all concepts, designs, details and the exclusive property of Scheffer Johnson Cox Frey Architects, Inc. and may not be used or reproduced in any way without the express consent of SJCF.

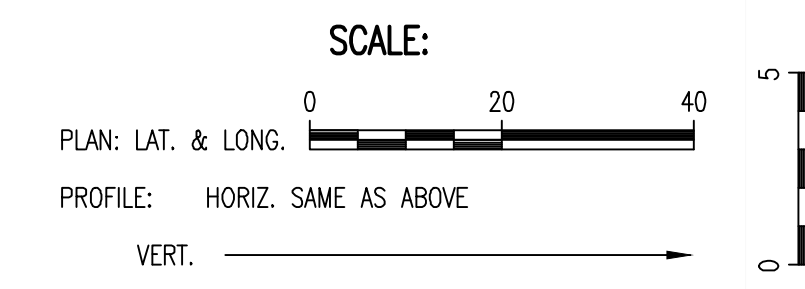
REVISIONS

PROJECT NUMBER	5379.00
PACKAGE NUMBER	
SANITARY SEWER LINE NO. 1	

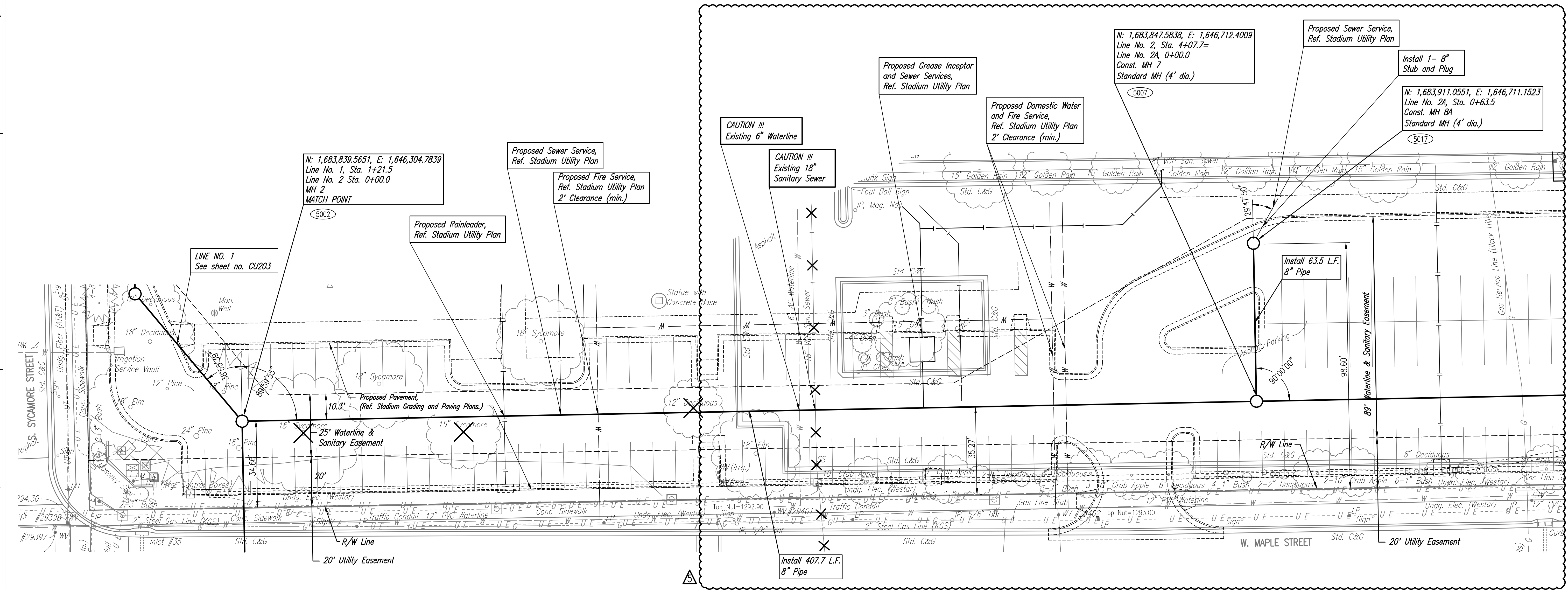
CITY OF WICHITA
 Private Project Number
 2374PPS (184004)

CU204

5000 = SEE SHEET NO. CU202 FOR SANITARY SEWER COORDINATES (TYP.)
 X X X = EXISTING SANITARY SEWER TO BE ABANDONED.
 X = TREE TO BE REMOVED



MABCD REVIEW
 STAMP LOCATION

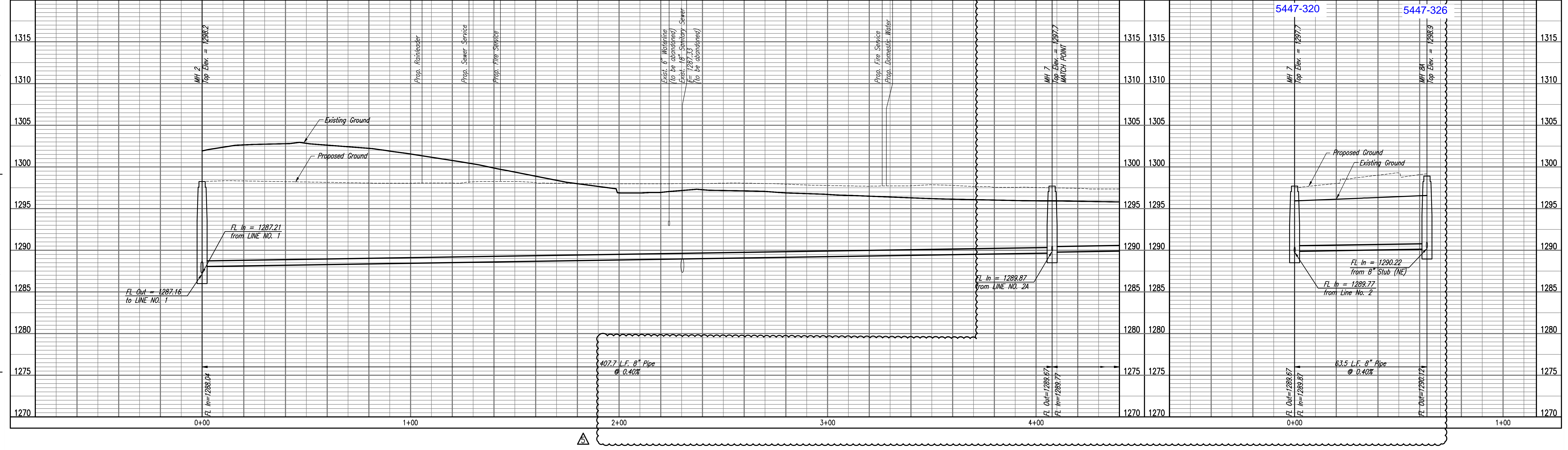


5447-226

SANITARY SEWER LINE NO. 2

5447-320

SANITARY SEWER LINE NO. 2A



PEC
 PROFESSIONAL ENGINEERING CONSULTANTS, P.A.
 303 SOUTH TOPEKA WICHITA, KS 67202-3162-2891 www.pec.com

CITY OF WICHITA
 Entertainment Venue and Multi - Sport Stadium
 300 Sycamore St.
 Wichita, KS 67213

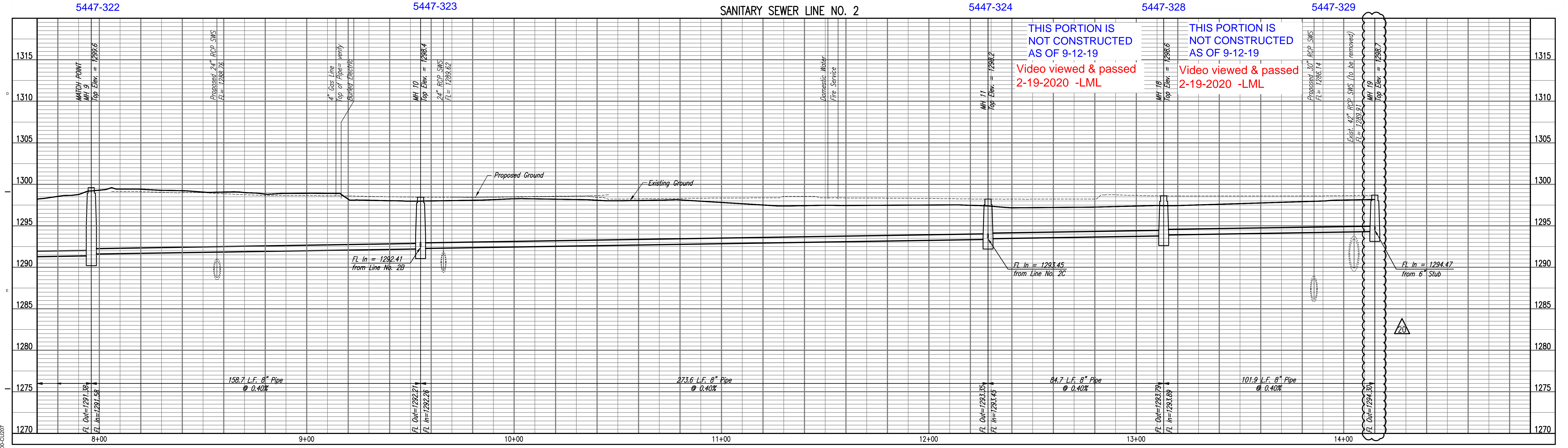
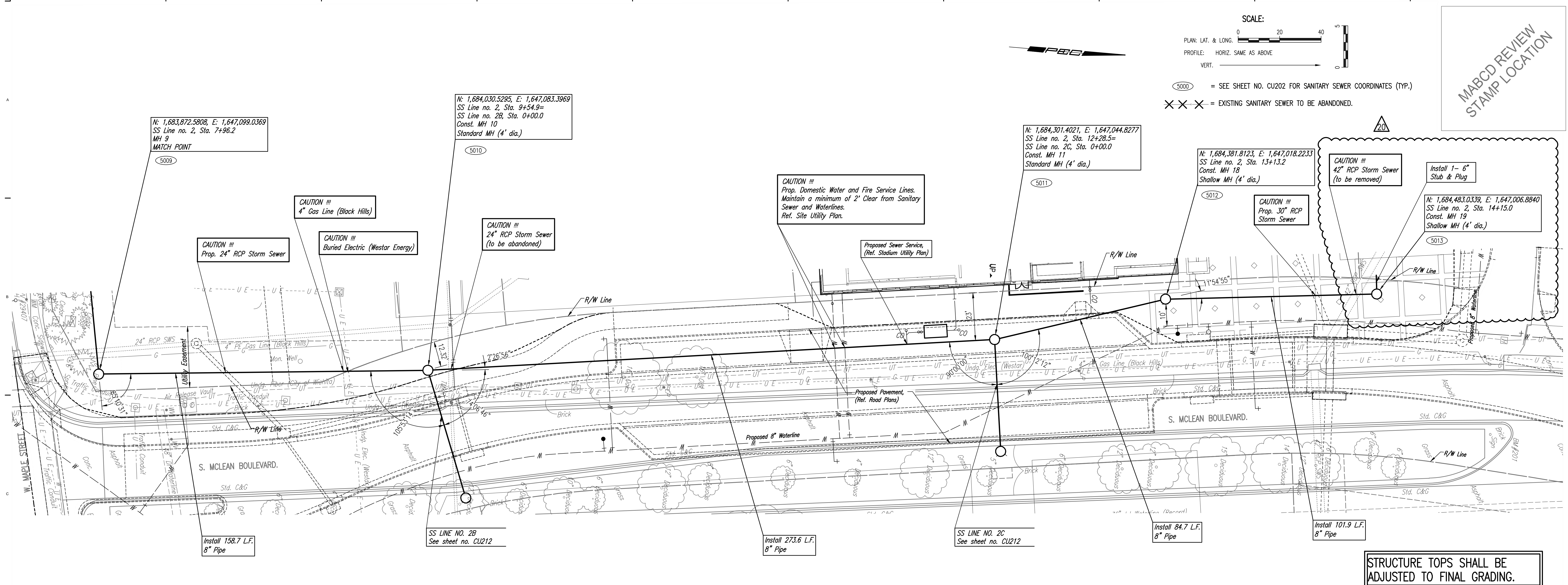
REVISIONS
 CPR03 03/13/19

PROJECT NUMBER
 5379.00
 INITIAL RELEASE DATE
 01/25/19
 SANITARY SEWER LINE NO. 2

CITY OF WICHITA
 Private Project Number
 2374PPS (184604)

CU205

Saved: 3-13-2019 3:02:20 PM by KURTIS.DEKAT
 U:\Working Files\2018\18077\000-CU205



Saved 7-2-2019 4:43:35 PM by KURTIS DEKAT
 U:\Wichita_Feb2019\18177\2374PPS\DWG\18177_2374_CU207

ENTIRE SHEET 19

MABCD REVIEW STAMP LOCATION
SJCF ARCHITECTURE | DLR GROUP | PEC, P.A.
JE DUNN CONSTRUCTION | EBY CONSTRUCTION
A DESIGN BUILD TEAM

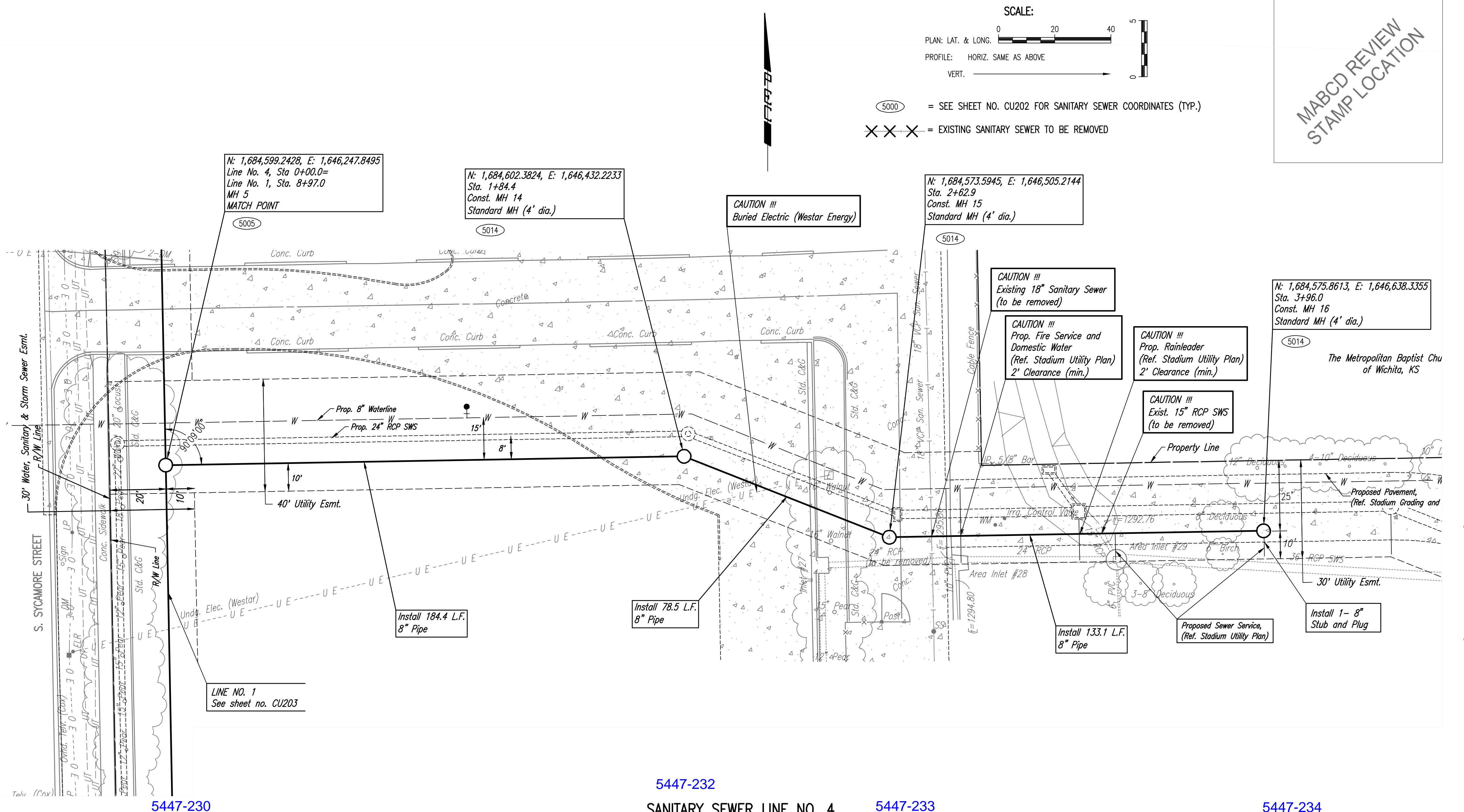
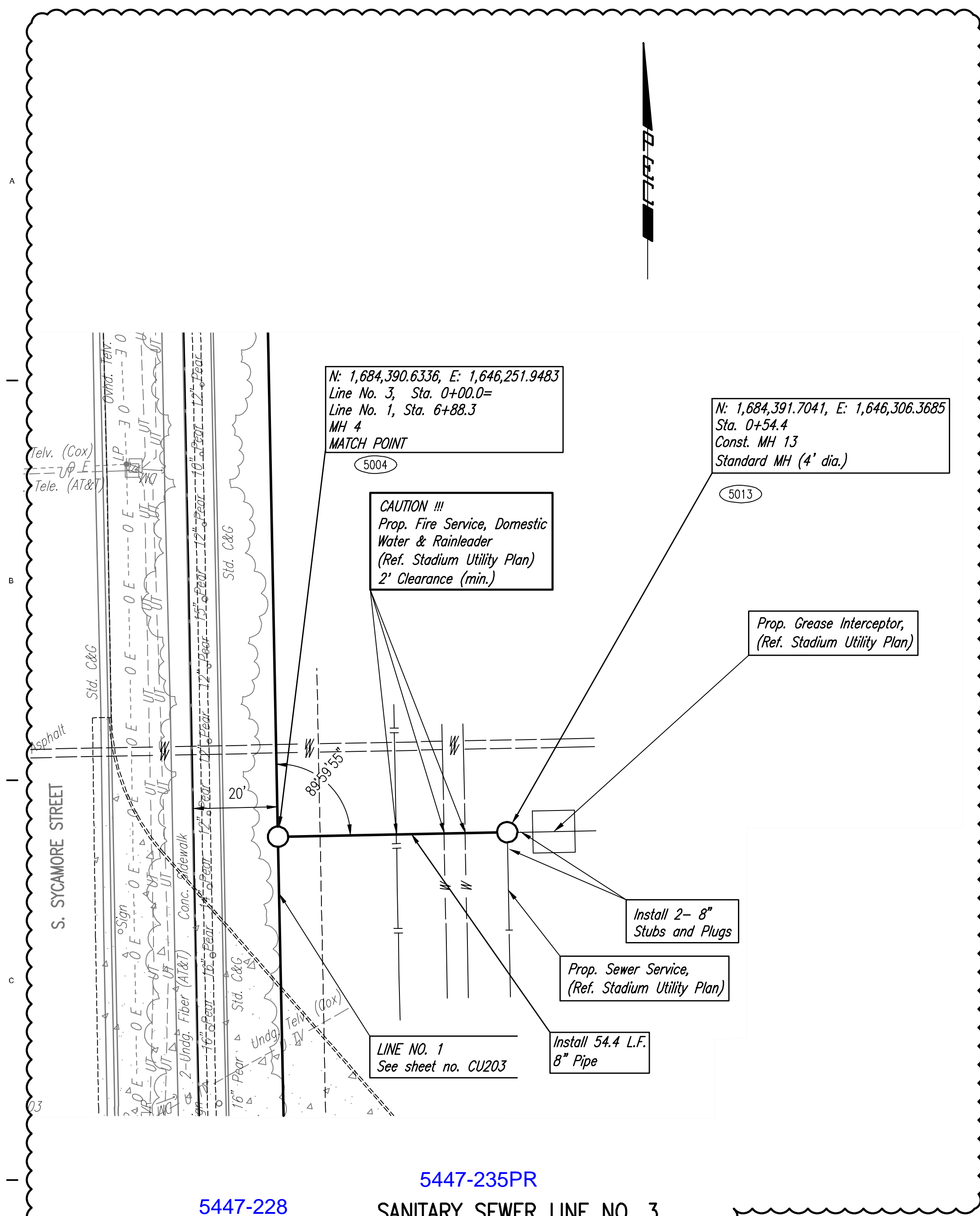
PROFESSIONAL ENGINEERING CONSULTANTS P.A.
303 SOUTH TOPEKA WICHITA, KS 67202 316-262-2891 www.pec1.com

CITY OF WICHITA
Entertainment Venue and Multi - Sport Stadium
300 Sycamore St. Wichita, KS 67213

©2019
 Schaefer Johnson Cox Frey Architecture, Inc. All Rights Reserved.
 These drawings and their contents, including, but not limited to, all concepts, designs, & ideas are the exclusive property of Schaefer Johnson Cox Frey (SJCFF), and may not be used or reproduced in any way without the express consent of SJCFF.

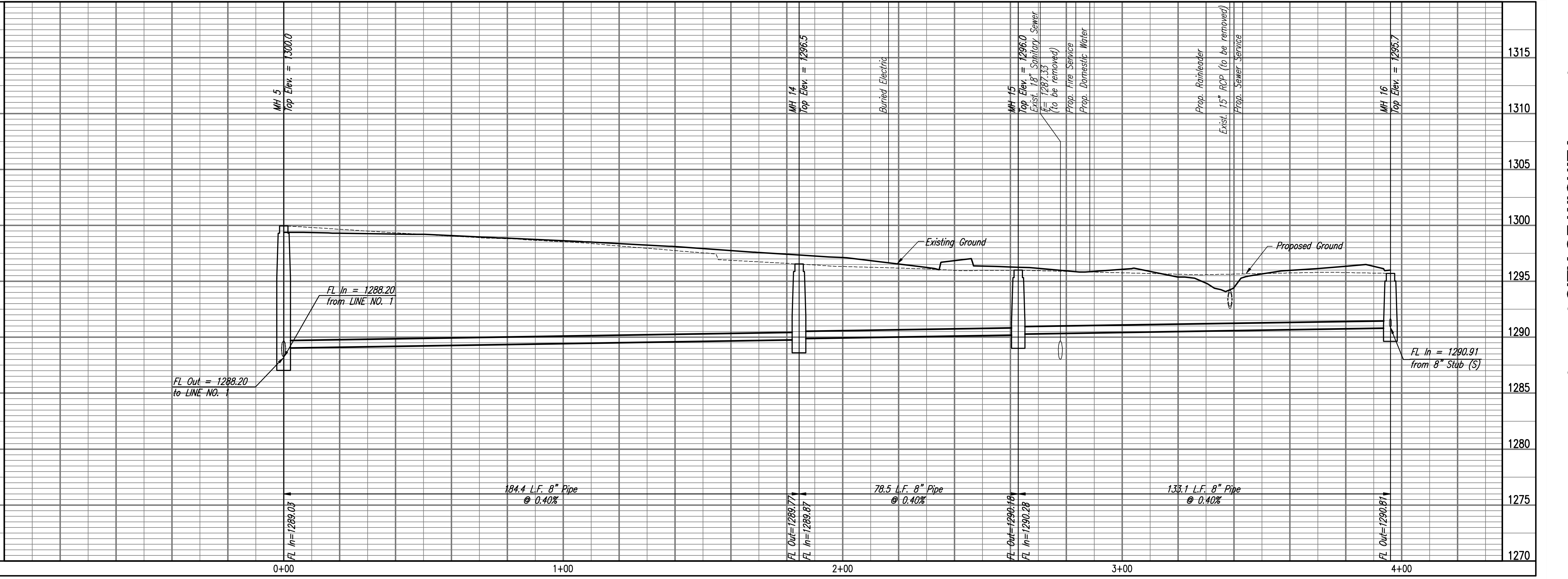
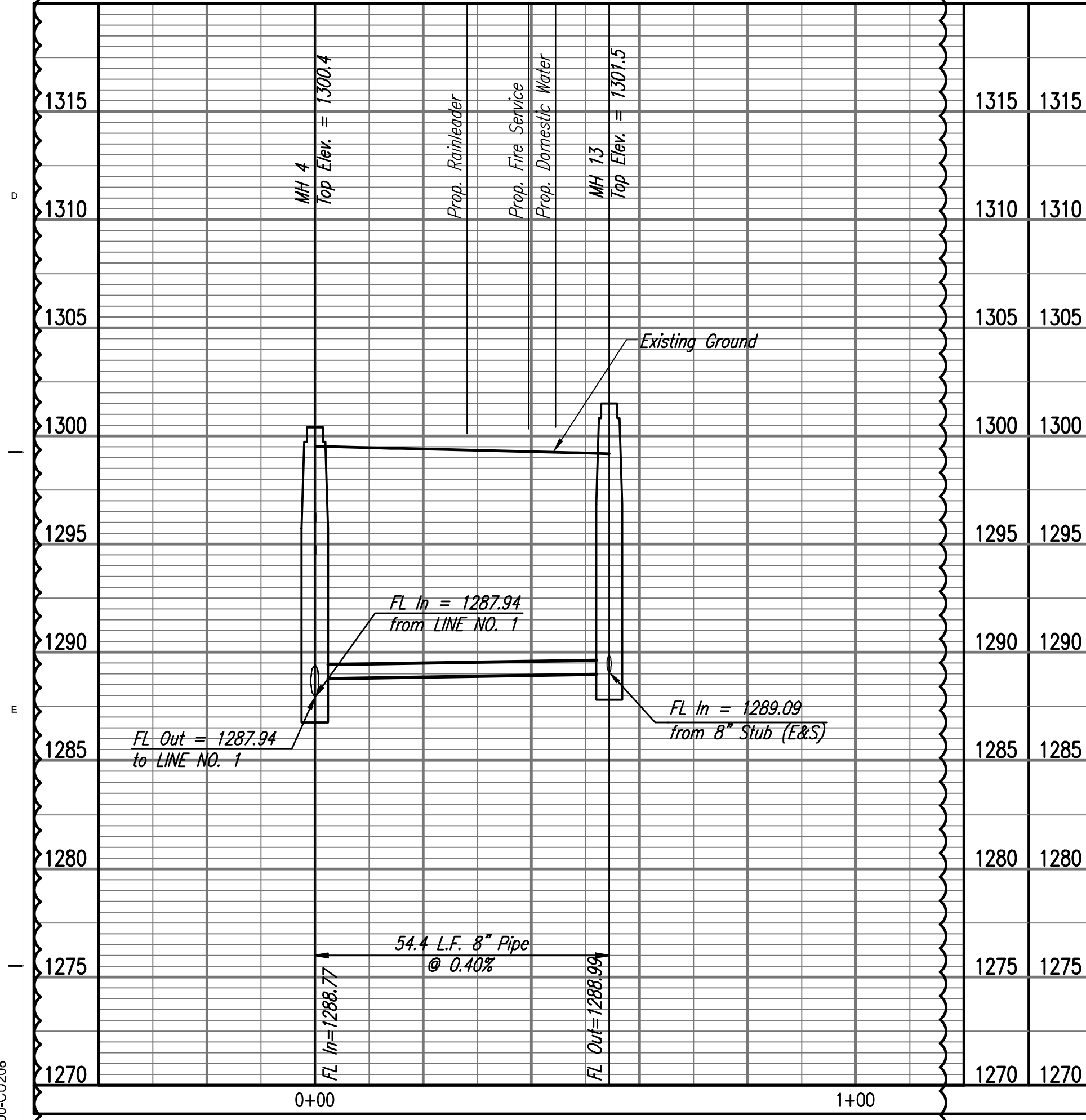
REVISIONS
 A CPR01 03/01/19
 B CPR20 06/21/19
 C CPR22 07/03/19

PROJECT NUMBER
5379.00
 INITIAL RELEASE DATE
 SANITARY SEWER LINE NO. 2
CITY OF WICHITA
 Private Project Number
2374PPS (184004)
CU207



5447-228 5447-235PR
SANITARY SEWER LINE NO. 3

5447-230 5447-233
SANITARY SEWER LINE NO. 4



5447-228 5447-235PR

5447-230 5447-233

Saved: 2-11-2018 5:24:30 PM by TREVOR KAUFMAN
 C:\Users\Trevor\Documents\2374PPS\2374PPS.dwg
 2374PPS.dwg

MABCD REVIEW
 STAMP LOCATION

SJCF ARCHITECTURE | DLR GROUP | PEC, P.A.
 JE DUNN CONSTRUCTION | EBY CONSTRUCTION
 A DESIGN BUILD TEAM

KANSAS ENGINEERING BOARD
 LICENSE NO. 24136
 TREVOR KAUFMAN
 PROFESSIONAL ENGINEER

PEC
 PROFESSIONAL ENGINEERING CONSULTANTS, P.A.
 303 SOUTH TOPEKA WICHITA,
 KS 67202-2891 www.pec.com

CITY OF WICHITA
 Entertainment Venue and
 Multi - Sport Stadium
 300 Sycamore St.
 Wichita, KS 67213

©2019
 Schaefer Johnson Cox Frey Architects, Inc.
 All Rights Reserved.

These drawings and their contents,
 including, but not limited to, all concepts,
 designs, details are the exclusive property of
 Schaefer Johnson Cox Frey (SJC), and may
 not be used or reproduced in any way without
 the express consent of SJC.

REVISIONS

PROJECT NUMBER
 5379.00

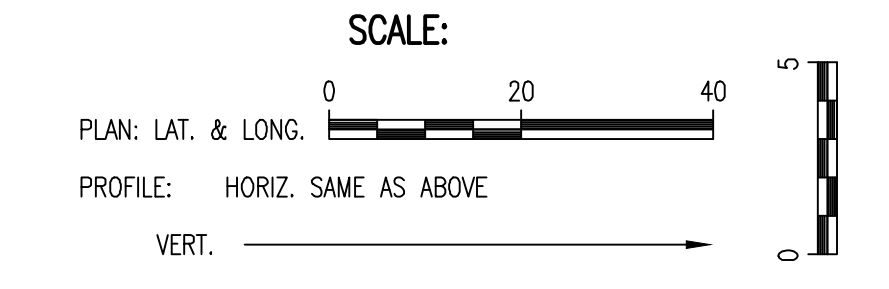
PACKAGE NUMBER

SANITARY SEWER
 LINE NO. 3 AND
 LINE NO. 4

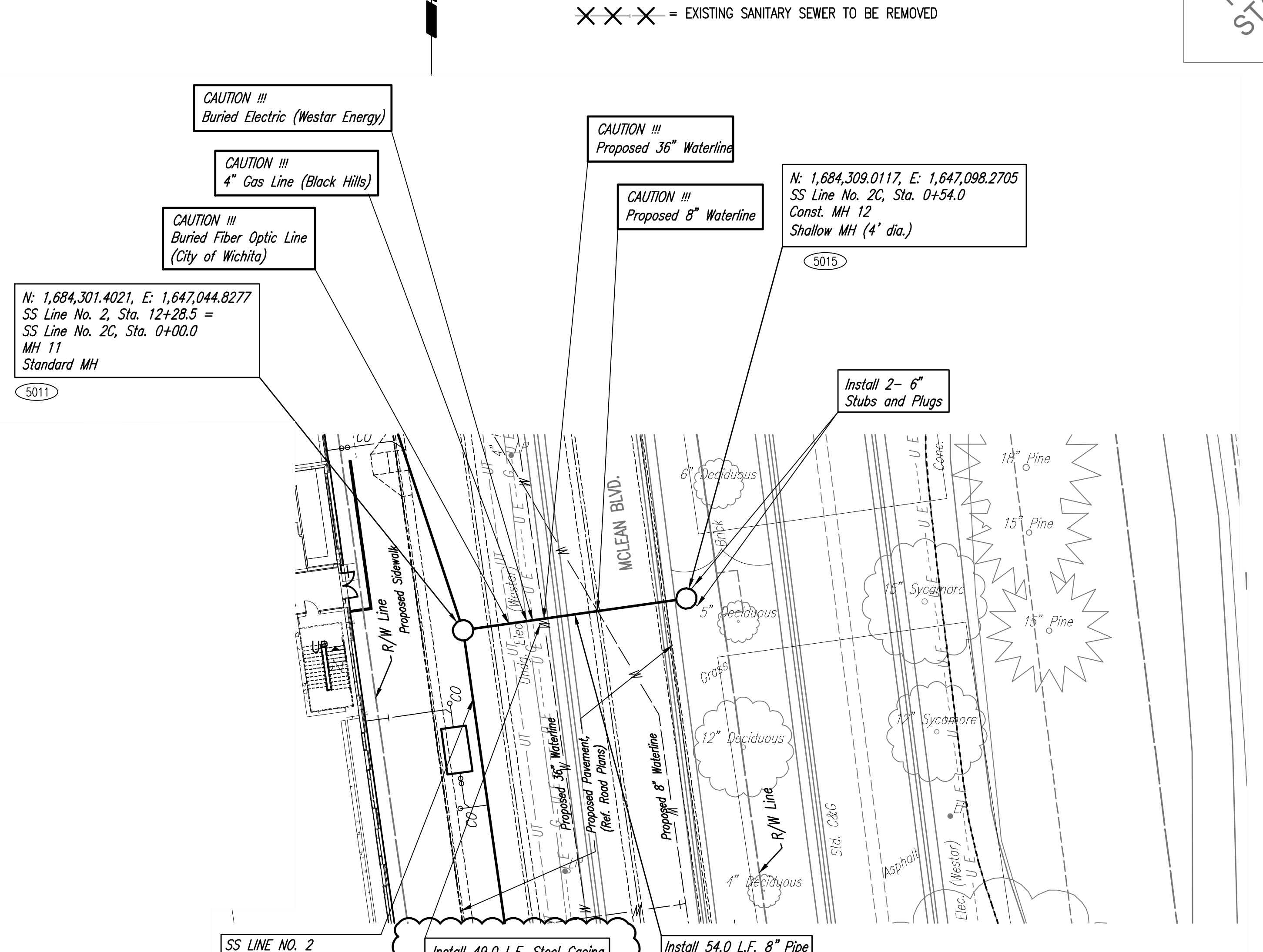
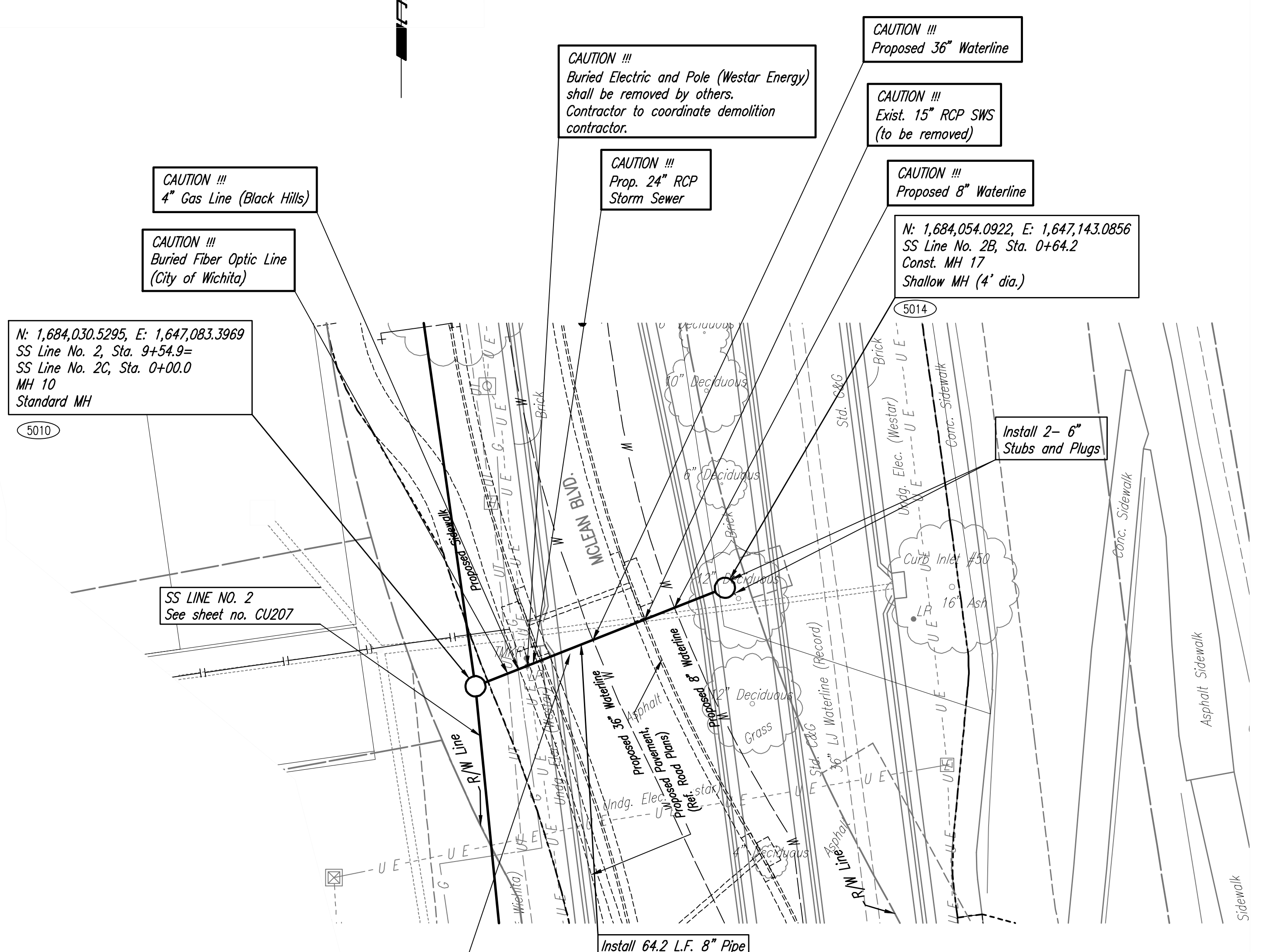
CITY OF WICHITA
 Private Project Number
 2374PPS (184604)

CU208

MABCD REVIEW
STAMP LOCATION



5000 = SEE SHEET NO. CU202 FOR SANITARY SEWER COORDINATES (TYP.)
 X X X = EXISTING SANITARY SEWER TO BE REMOVED



Install 50.4 L.F. Steel Casing
(min. I.D. 18")

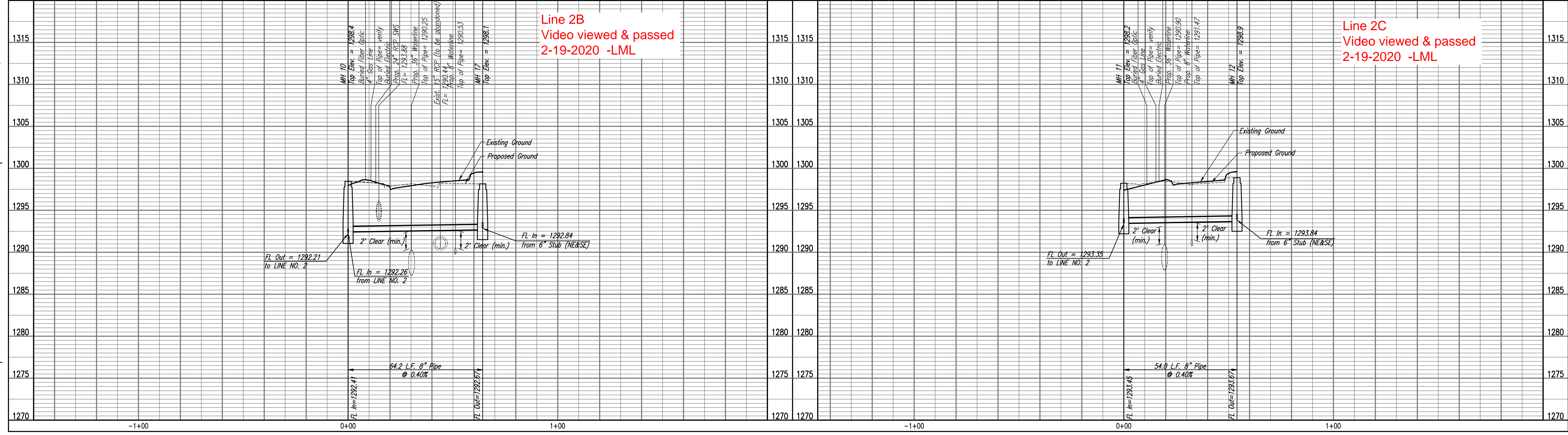
THIS PORTION IS NOT
CONSTRUCTED AS OF 9-12-19

Install 40.0 L.F. Steel Casing
(min. I.D. 18")

THIS PORTION IS NOT
CONSTRUCTED AS OF 9-12-19

SANITARY SEWER LINE NO. 2B

SANITARY SEWER LINE NO. 2C



Line 2B
Video viewed & passed
2-19-2020 -LML

Line 2C
Video viewed & passed
2-19-2020 -LML



PEC
PROFESSIONAL ENGINEERING CONSULTANTS, P.A.
303 SOUTH TOPEKA WICHITA, KS 67202 316-262-2891 www.pec1.com

CITY OF WICHITA
Entertainment Venue and
Multi - Sport Stadium
300 Sycamore St.
Wichita, KS 67213

©2019
Schafer Johnson Co. Inc. Architecture, Inc.
All Rights Reserved.
These drawings and their contents,
including, but not limited to, all concepts,
designs, & ideas are the exclusive property of
Schafer Johnson Co. Inc. (SJC), and may
not be used or reproduced in any way without
the express consent of SJC.
REVISIONS
19 CPR20 06/21/19
20 CPR22 07/03/19

PROJECT NUMBER
5379.00
INITIAL RELEASE DATE

SANITARY SEWER
LINE NO. 2B AND
LINE NO. 2C

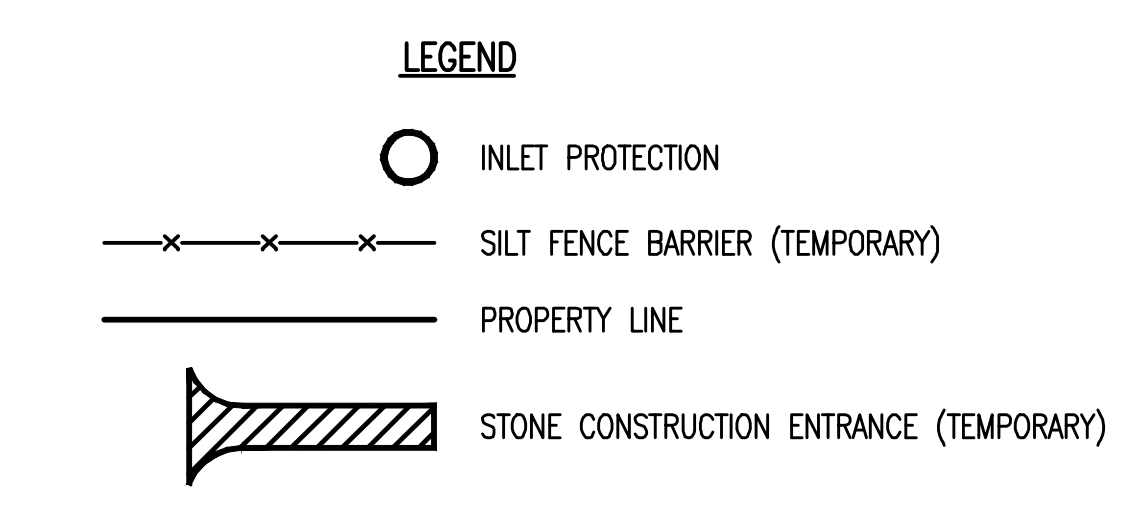
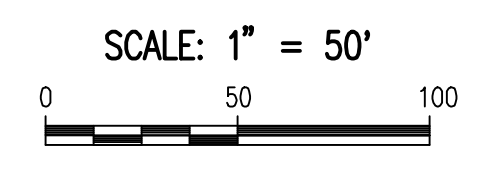
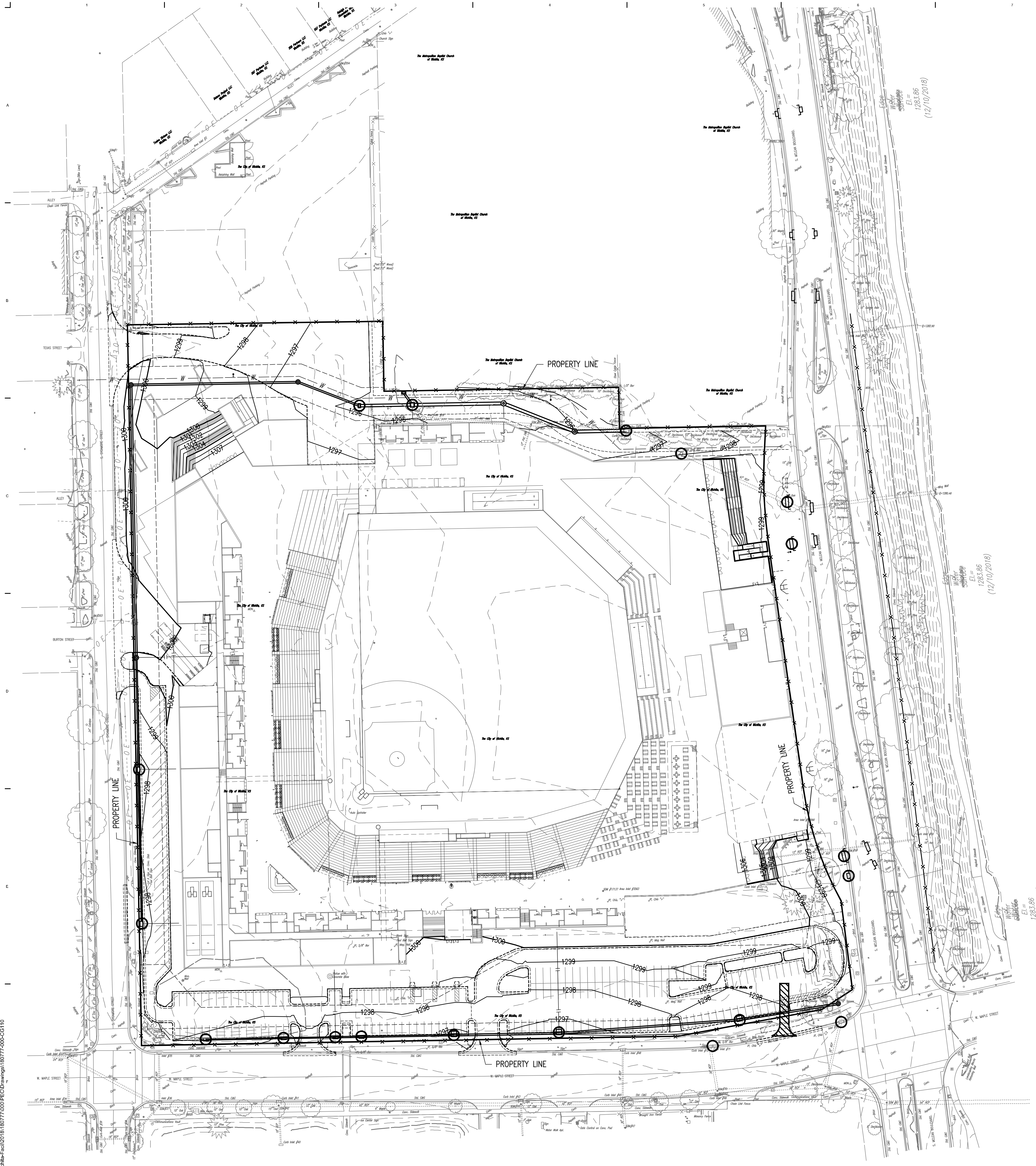
CU212

ADDED SHEET 19

CITY OF WICHITA
Private Project Number
2374PPS (184004)

Saved: 7-2-2019 1:16:08 PM by KURTIS DEKAT
U:\Wichita_Final\2019\184004\PPS\2374PPS\2374PPS_CU212.dwg
U:\Wichita_Final\2019\184004\PPS\2374PPS\2374PPS_CU212.dwg

Saved: 12/10/2018 3:27:29 PM by CSJ
 U:\Wichita-Fair\20181018\770000-PEC\DWG\180770000-CG110



PROJECT DISTURBED AREA = 15.0 ACRES.

INSPECTION AND MAINTENANCE:
 SILT FENCE DITCH CHECKS SHOULD BE INSPECTED EVERY 7 DAYS
 AND WITHIN 24 HOURS OF A RAINFALL OF 1/2" OR MORE.

EROSION CONTROL NOTES

1. CONTRACTOR SHALL INSTALL AND MAINTAIN EROSION PROTECTION THROUGHOUT THE ENTIRE PROJECT. THE FOLLOWING QUANTITIES ARE FOR INFORMATION ONLY, AND SHALL BE INCLUDED IN THE EROSION CONTROL LUMP SUM BID ITEMS. EROSION PROTECTION SHALL BE INCLUDED IN THE BID AS FOLLOWS:
 CONSTRUCTION ENTRANCE = 1
 SILT FENCE BARRIER = 3350 L.F.
 INLET PROTECTION = 19 EA.
2. THE EROSION CONTROL DEVICES SHOWN ON THIS SHEET ARE CONSIDERED MINIMUM STANDARDS. WHENEVER SEDIMENT ENTERS THE STREETS, STORM SEWERS, DITCHES, OR PONDS, CONTRACTOR WILL INSTALL ADDITIONAL DEVICES, AS NEEDED, TO CORRECT THE PROBLEM.
3. THE EROSION CONTROL DEVICES SHOWN HEREON MUST BE IN PLACE AT ALL TIMES DURING CONSTRUCTION UNTIL SUCH TIME AS THE SITE IS REESTABLISHED WITH PAVING OR GRASS. TEMPORARY OR PERMANENT SEEDING AND MULCH WILL BE INSTALLED WHEN EARTHWORK ACTIVITIES CEASE IN AN AREA FOR 14 DAYS OR MORE.
4. ANY MUD INADVERTENTLY TRACKED ONTO ANY STREET SHALL BE CLEANED UP BY THE CONTRACTOR, AT THE END OF EACH DAY'S WORK, OR AS DIRECTED BY THE FIELD ENGINEER.
5. CONTRACTOR TO FURNISH A TRUCK WASH-OUT PIT TO BE PLACED AT A CONVENIENT LOCATION THAT DOES NOT CONFLICT WITH CONSTRUCTION. CONTRACTOR SHALL CLEAN OUT AND BACKFILL PIT PRIOR TO FINAL INSPECTION. LOCATION SHALL BE APPROVED BY THE FIELD ENGINEER.

MABCD REVIEW
 STAMP LOCATION

SJCF ARCHITECTURE | DLR GROUP | PEC, P.A.
 JE DUNN CONSTRUCTION | EBY CONSTRUCTION
 A DESIGN BUILD TEAM



CITY OF WICHITA
 Entertainment Venue and
 Multi - Sport Stadium
 300 Sycamore St.
 Wichita, KS 67213

REVISIONS

PROJECT NUMBER
 5300.00
 PACKAGE NUMBER
 #1A
 EROSION CONTROL
 PLAN

CG110