

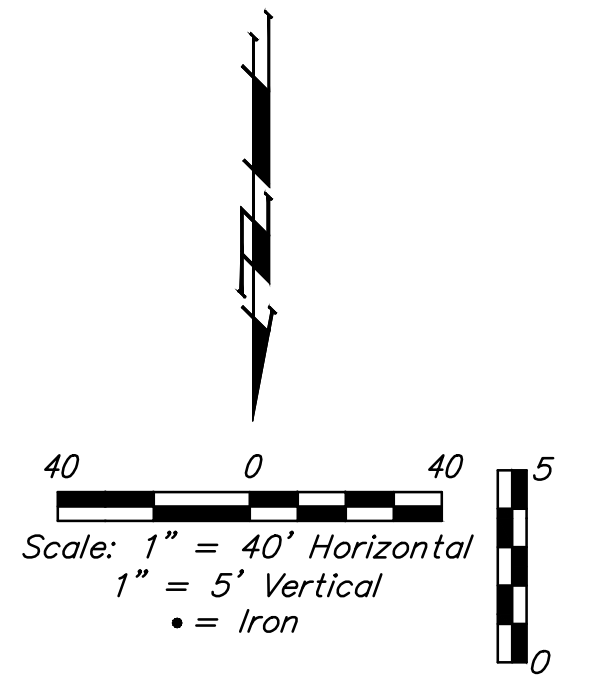
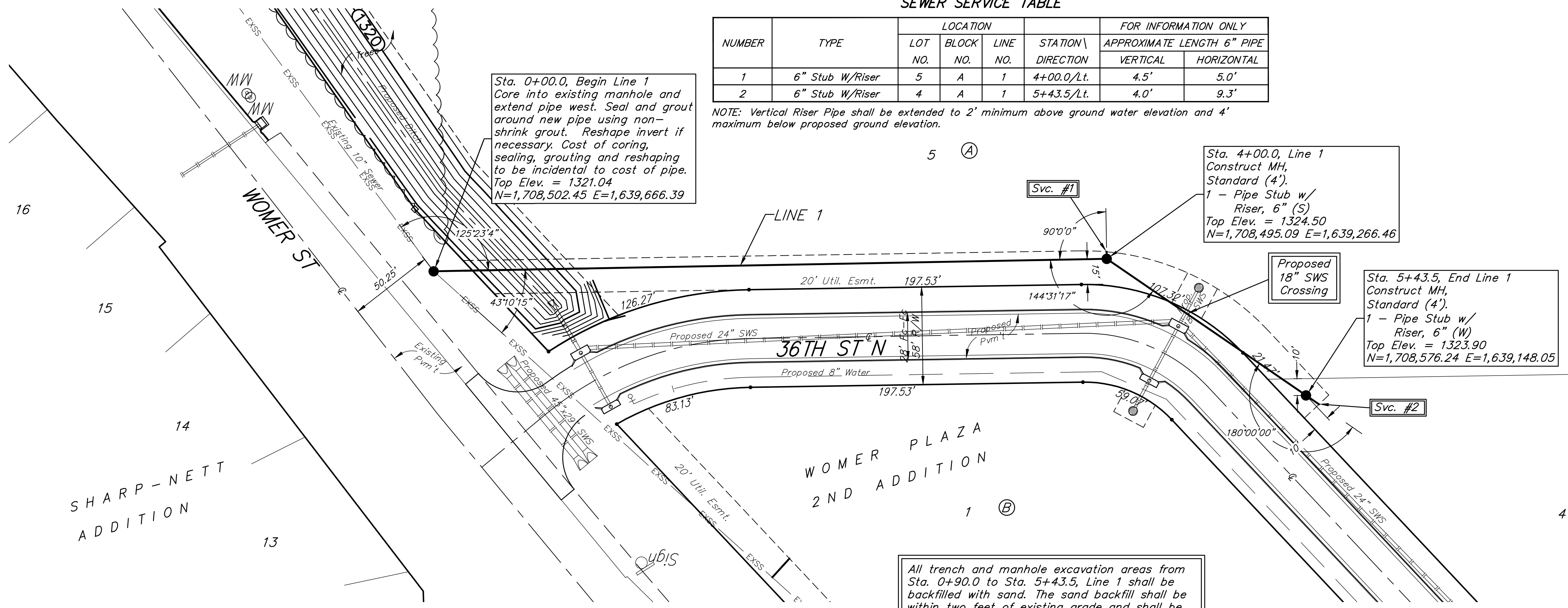
BENCHMARKS:
 BM #1: "□" South end of Womer St. median approximately 565' south of 37th St. N. Elev. = 1324.11 NAVD88

BM #2: "□" Top of curb inlet, west side of Womer St. approximately 1,400' south of 37th St. N. Elev. = 1325.82 NAVD88

SEWER SERVICE TABLE

NUMBER	TYPE	LOCATION			FOR INFORMATION ONLY		
		LOT NO.	BLOCK NO.	LINE NO.	STATION \ DIRECTION	APPROXIMATE LENGTH 6" PIPE	VERTICAL
1	6" Stub W/Riser	5	A	1	4+00.0/Lt.	4.5'	5.0'
2	6" Stub W/Riser	4	A	1	5+43.5/Lt.	4.0'	9.3'

NOTE: Vertical Riser Pipe shall be extended to 2' minimum above ground water elevation and 4' maximum below proposed ground elevation.



Sta. 0+00.0, Begin Line 1 Core into existing manhole and extend pipe west. Seal and grout around new pipe using non-shrink grout. Reshape invert if necessary. Cost of coring, sealing, grouting and reshaping to be incidental to cost of pipe. Top Elev. = 1321.04 N=1,708,502.45 E=1,639,666.39

Sta. 4+00.0, Line 1 Construct MH, Standard (4'). 1 - Pipe Stub w/ Riser, 6" (S) Top Elev. = 1324.50 N=1,708,495.09 E=1,639,266.46

Sta. 5+43.5, End Line 1 Construct MH, Standard (4'). 1 - Pipe Stub w/ Riser, 6" (W) Top Elev. = 1323.90 N=1,708,576.24 E=1,639,148.05

All trench and manhole excavation areas from Sta. 0+90.0 to Sta. 5+43.5, Line 1 shall be backfilled with sand. The sand backfill shall be within two feet of existing grade and shall be water-jetted and vibrated during backfilling. All costs shall be paid for as L.F. "Fill, Sand (Flushed & Vibrated)".

Contractor shall verify elevation and location of existing manhole prior to construction and notify Engineer of any discrepancy.

