

BENCHMARKS:

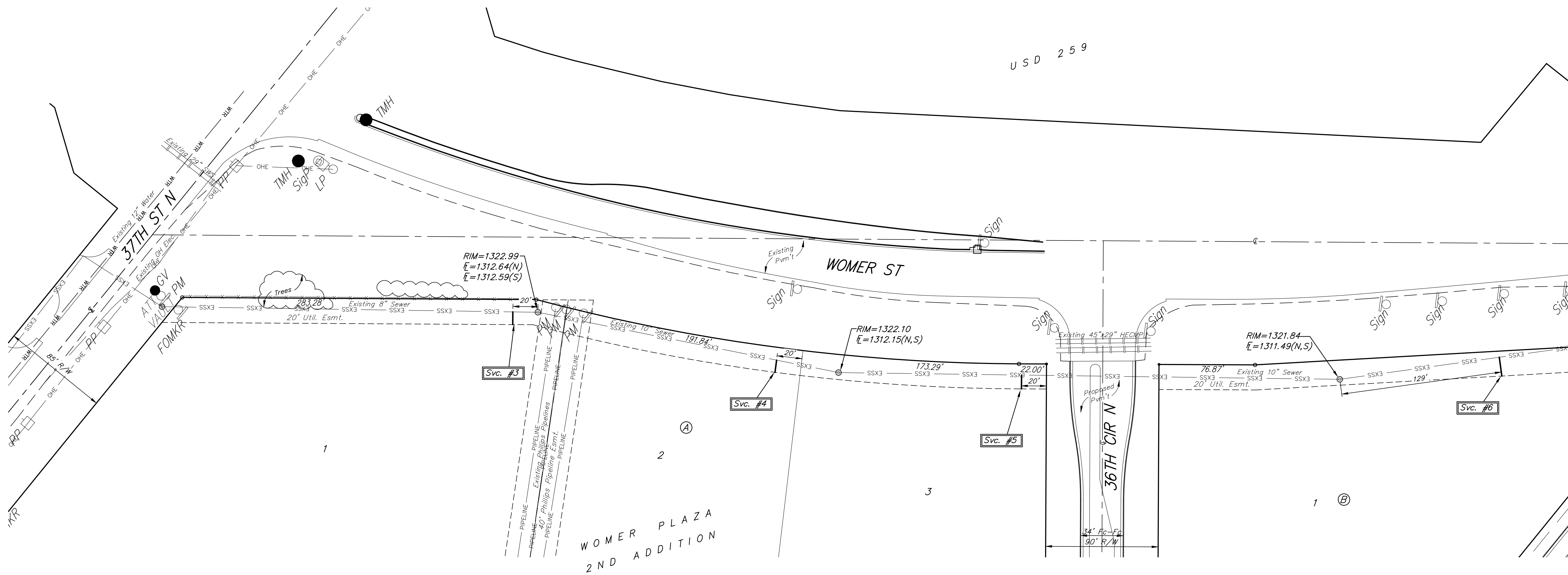
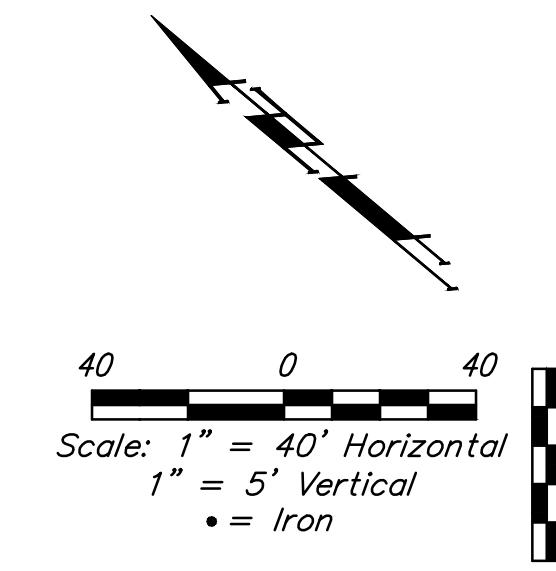
BM #1: "□" South end of Womer St. median approximately 565' south of 37th St. N.
Elev. = 1324.11 NAVD88

BM #2: "□" Top of curb inlet, west side of Womer St. approximately 1,400' south of 37th St. N.
Elev. = 1325.82 NAVD88

SEWER SERVICE TABLE

NUMBER	TYPE	LOCATION				FOR INFORMATION ONLY	
		LOT NO.	BLOCK NO.	LINE NO.	STATION \ DIRECTION	APPROXIMATE LENGTH 6" PIPE	
3	8" X 6" Saddle Tap W/Riser	1	A	-	-	6.5'	13.0'
4	8" X 6" Saddle Tap W/Riser	2	A	-	-	6.0'	10.0'
5	8" X 6" Saddle Tap W/Riser	3	A	-	-	6.0'	5.6'
6	8" X 6" Saddle Tap W/Riser	1	B	-	-	6.5'	4.7'

NOTE: Vertical Riser Pipe shall be extended to 2' minimum above ground water elevation and 4' maximum below proposed ground elevation.



Baughman Company, P.A.
 ENGINEERING, ARCHITECTURE, PLANNING, LANDSCAPE ARCHITECTURE
 1145 E. WILSON ST., SUITE 200, P.O. BOX 200, WICHITA, KS 67201
 316.261.1111
 www.baughman.com
 Date: 07/19

ADDL. RISERS
 SANITARY SEWER IMPROVEMENTS

WOMER PLAZA 2ND ADD.

