

CORNEJO EAST 2ND

CORNEJO EAST 2ND

LYNCH ADDITION TO TRAVEL AIR CITY

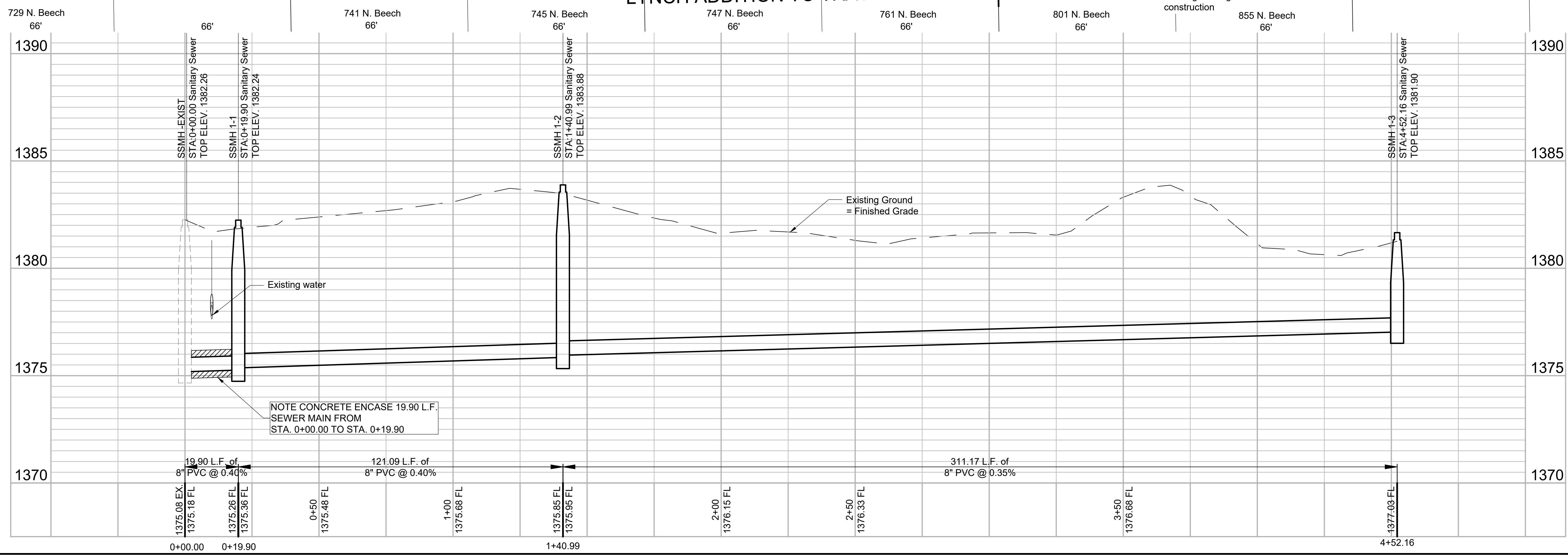
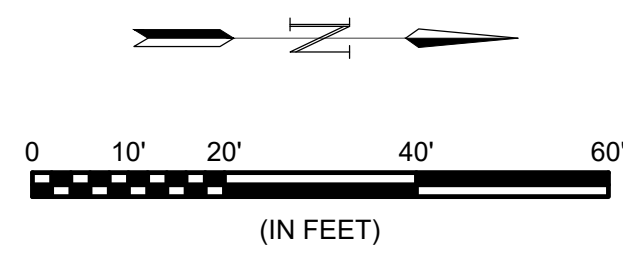
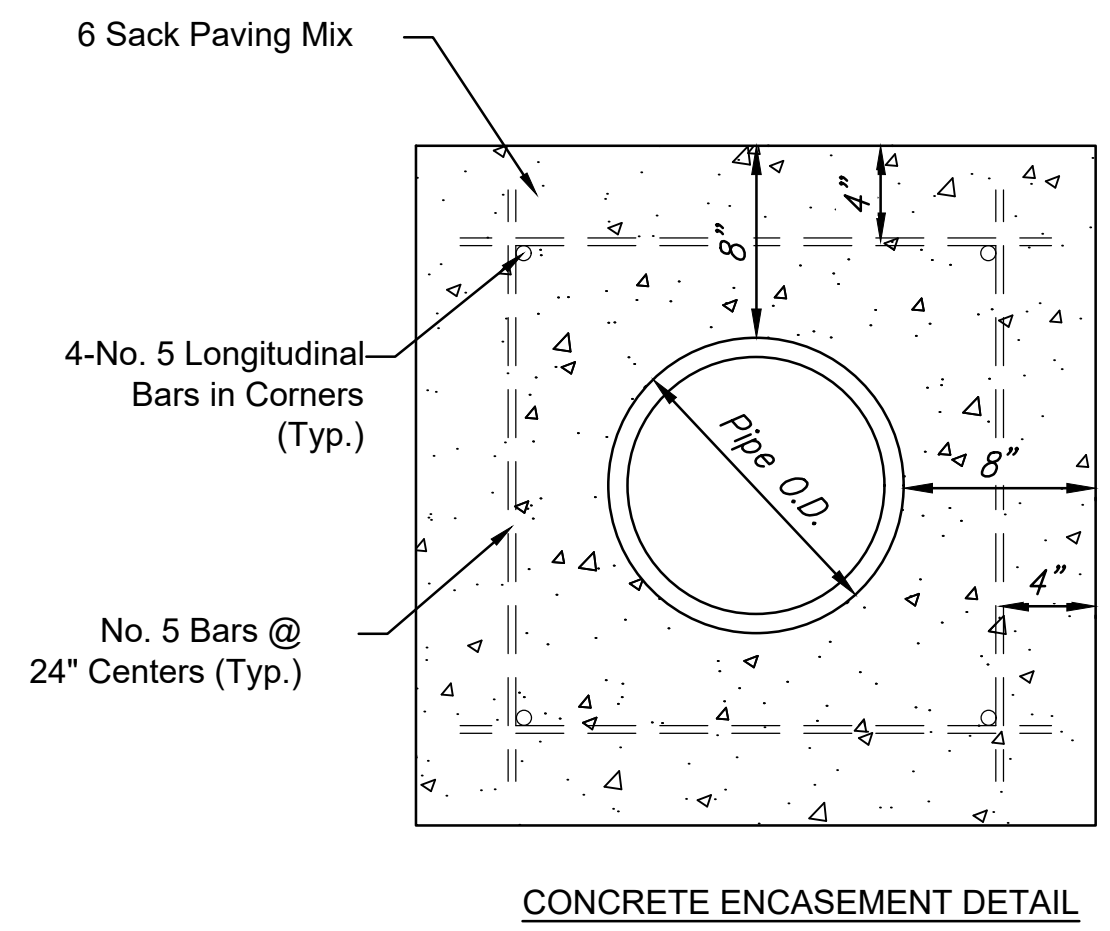
- NOTES:**
- TREES SHALL BE TRIMMED AS NECESSARY FOR SANITARY SEWER CONSTRUCTION. TREE TRIMMING SHALL BE DONE WITH CHAINSAWS OR OTHER EQUIPMENT SPECIFICALLY DESIGNED FOR THAT PURPOSE. UNLESS OTHERWISE INDICATED IN THIS PLAN, TREES SHALL ONLY BE REMOVED WITH APPROVAL OF THE FIELD ENGINEER. TRIMMING AND REMOVAL OF TREES SHALL BE INCIDENTAL TO THE BID ITEM FOR SITE CLEARING.
 - UNLESS OTHERWISE NOTED, EXISTING FENCES SHALL BE REMOVED AND RESET AS NECESSARY FOR SEWER CONSTRUCTION. INCIDENTAL TO THE BID ITEM FOR SITE RESTORATION.

SSMH -EXIST
N 1690898.27 E 1682276.49
STA:0+00.00, Sanitary Sewer
CONNECT TO EXISTING MH. CORE DRILL
AND RESHAPE INVERT AS NECESSARY

SSMH 1-1
N 1690918.17 E 1682276.16
STA:0+19.90, Sanitary Sewer
CONSTRUCT STD. MANHOLE
D = 4.0'

SSMH 1-2
N 1690920.17 E 1682397.23
STA:1+40.99, Sanitary Sewer
CONSTRUCT STD. MANHOLE
D = 4.0'

SSMH 1-3
N 1691231.29 E 1682391.91
STA:4+52.16, Sanitary Sewer
CONSTRUCT SHALLOW MANHOLE
D = 4.0'



File: L:\2019\19141015 - Lynch Addition SSD\Drawings\C3D\19141015 Engineering Base.dwg Last Save: 9/3/2019 4:26 PM Last saved by: KWL/lee
 Last plotted by: Lee, Ken W. Plot Style: Plot Scale: 1:2.8849 Plot Date: 9/5/2019 1:18 PM Plotter used: None

© 2018 GARVER, LLC
THIS DOCUMENT, ALONG WITH THE IDEAS AND DESIGNS CONVEYED HEREIN, SHALL BE CONSIDERED INSTRUMENTS OF PROFESSIONAL SERVICE AND ARE PROPERTY OF GARVER, LLC. ANY USE, REPRODUCTION, OR DISTRIBUTION OF THIS DOCUMENT, ALONG WITH THE IDEAS AND DESIGN CONTAINED HEREIN, IS PROHIBITED UNLESS AUTHORIZED IN WRITING BY GARVER, LLC OR EXPLICITLY ALLOWED IN THE GOVERNING PROFESSIONAL SERVICES AGREEMENT FOR THIS WORK.

REV.	DATE	DESCRIPTION	BY



CITY OF WICHITA
WICHITA, KANSAS

LYNCH ADDITION
SANITARY

Plan & Profile

JOB NO.: 19T41015
DATE: September 2019
DESIGNED BY: KWL
DRAWN BY: KWL/MCP

BAR IS ONE INCH ON ORIGINAL DRAWING
0" = 1" INCH ON THIS SHEET, ADJUST SCALES ACCORDINGLY.

DRAWING NUMBER