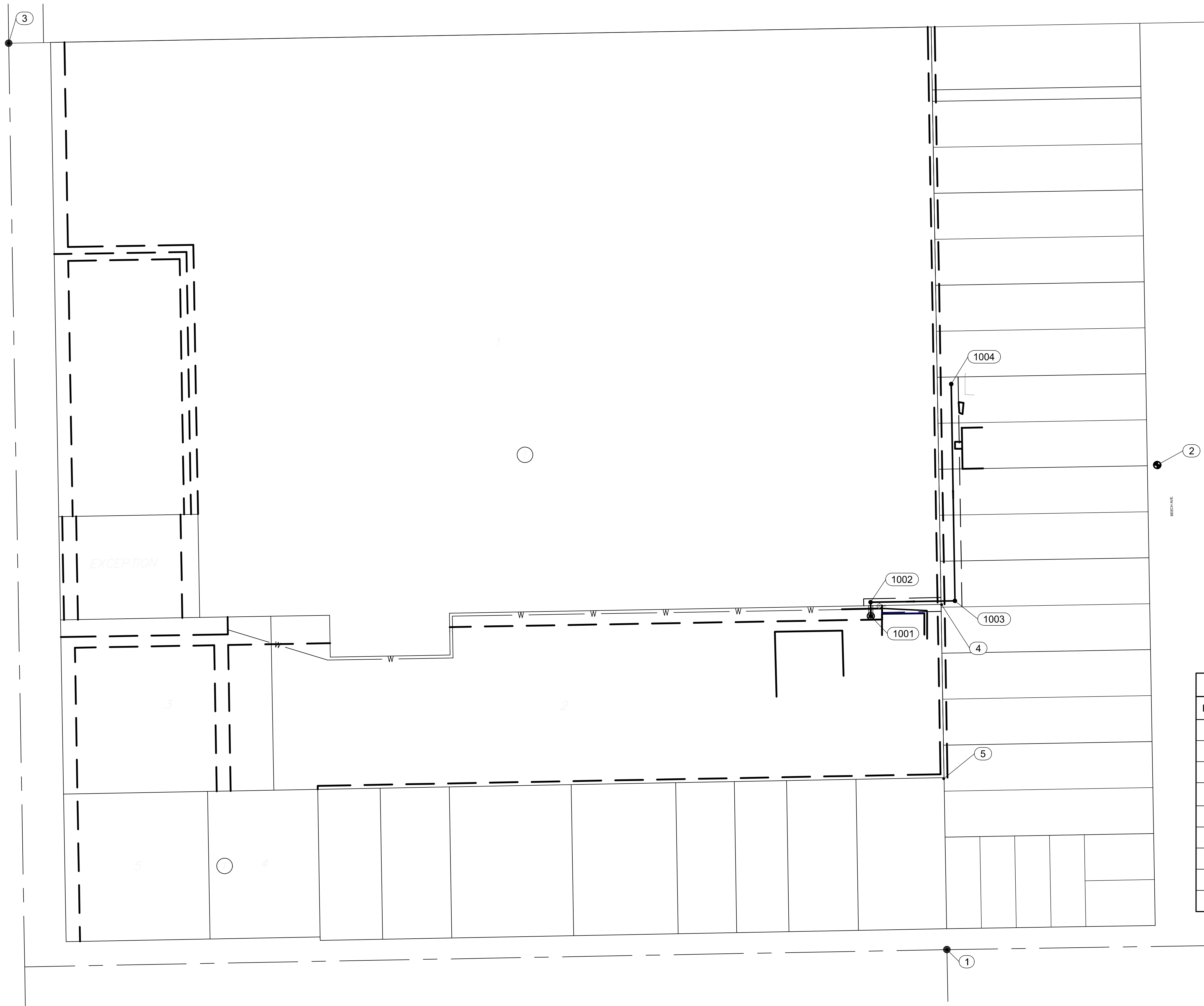
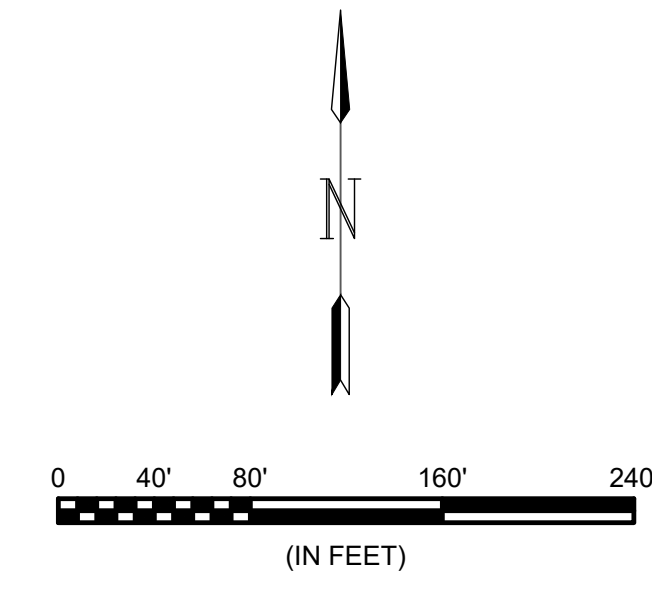


Lynch Addition Key Map



© 2019 GARVER, LLC
THIS DOCUMENT, ALONG WITH THE IDEAS AND DESIGNS CONVEYED HEREIN, SHALL BE CONSIDERED INSTRUMENTS OF PROFESSIONAL SERVICE AND ARE PROPERTY OF GARVER, LLC. ANY USE, REPRODUCTION, OR DISTRIBUTION OF THIS DOCUMENT, ALONG WITH THE IDEAS AND DESIGN CONTAINED HEREIN, IS PROHIBITED UNLESS AUTHORIZED IN WRITING BY GARVER, LLC OR EXPLICITLY ALLOWED IN THE GOVERNING PROFESSIONAL SERVICES AGREEMENT FOR THIS WORK.



Point Table			
Point	Northing	Easting	Description
1	1690419.61	1682385.78	RBR
2	1691115.08	1682687.65	Bench Mark
3	1691720.41	1681038.85	RBR
4	1690914.70	1682378.17	1/2 Rebar w/ Baughman Cap
5	1690665.03	1682381.17	5/8 rebar
1001	1690898.27	1682276.49	SSMH-EXIST
1002	1690918.17	1682276.16	SSMH 1-1
1003	1690920.17	1682397.23	SSMH 1-2
1004	1691231.29	1682391.91	SSMH 1-3

File: L:\2019\19T41015 - Lynch Addition\SSIDrawings\CAD\Key Map.dwg, Last Save: 9/3/2019 8:54 AM, Last saved by: KWL/lee
 Last plotted by: Lee, Ken W., Plot Style: ----, Plot Scale: 1:2, 8/4/19 10:37 AM, Plotter used: None

REV.	DATE	DESCRIPTION	BY



CITY OF WICHITA
WICHITA, KANSAS
LYNCH ADDITION
SANITARY

Key Map

JOB NO.: 19T41015
DATE: September 2019
DESIGNED BY: KWL
DRAWN BY: KWL/MCP

BAR IS ONE INCH ON ORIGINAL DRAWING
0 1" IF NOT ONE INCH ON THIS SHEET, ADJUST SCALES ACCORDINGLY.

DRAWING NUMBER

SHEET NUMBER **5** OF **5**