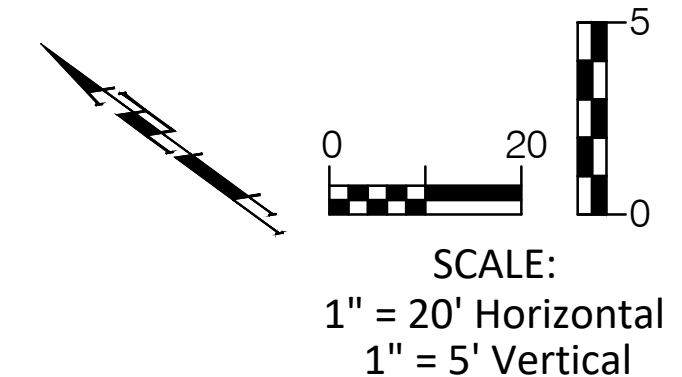
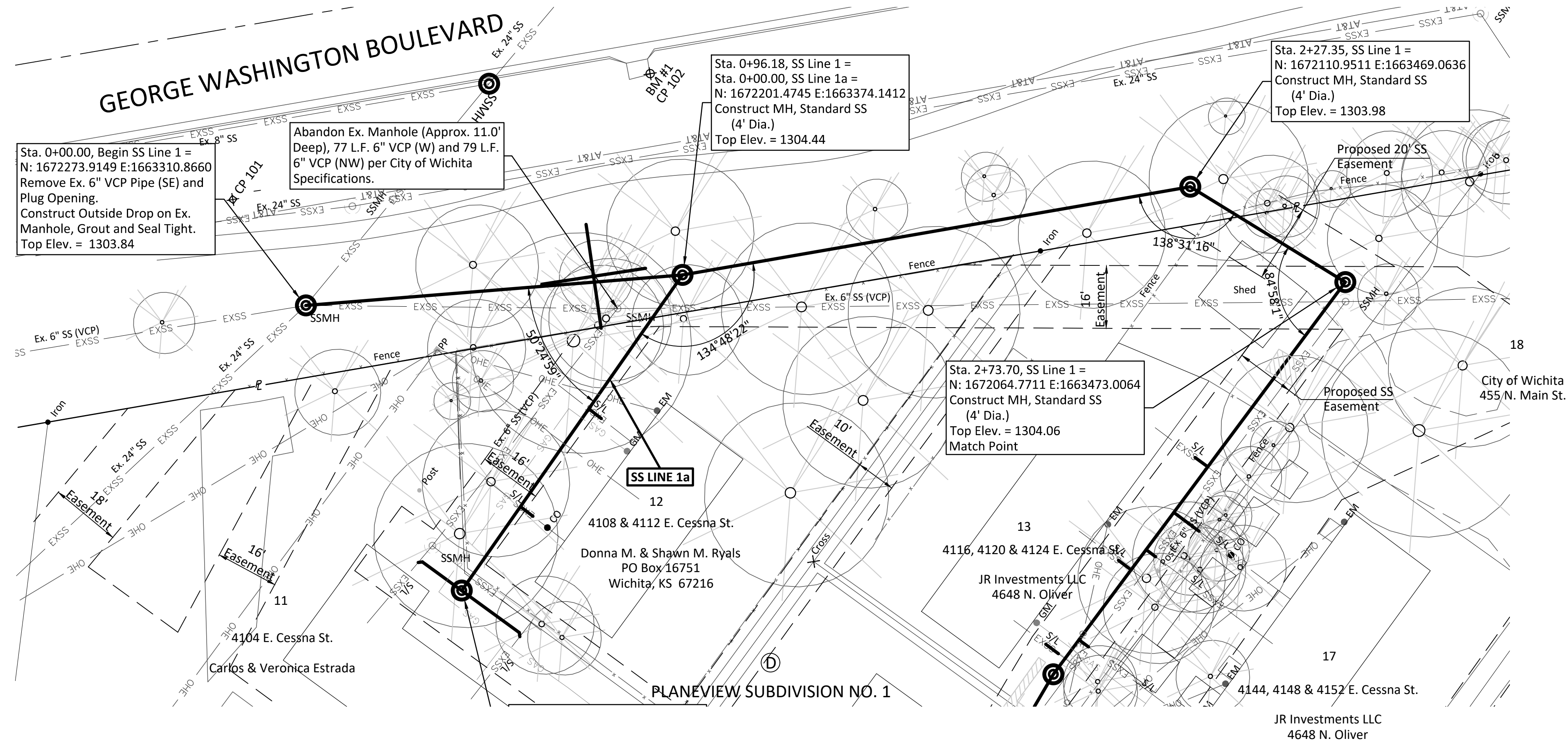


**BENCHMARKS**

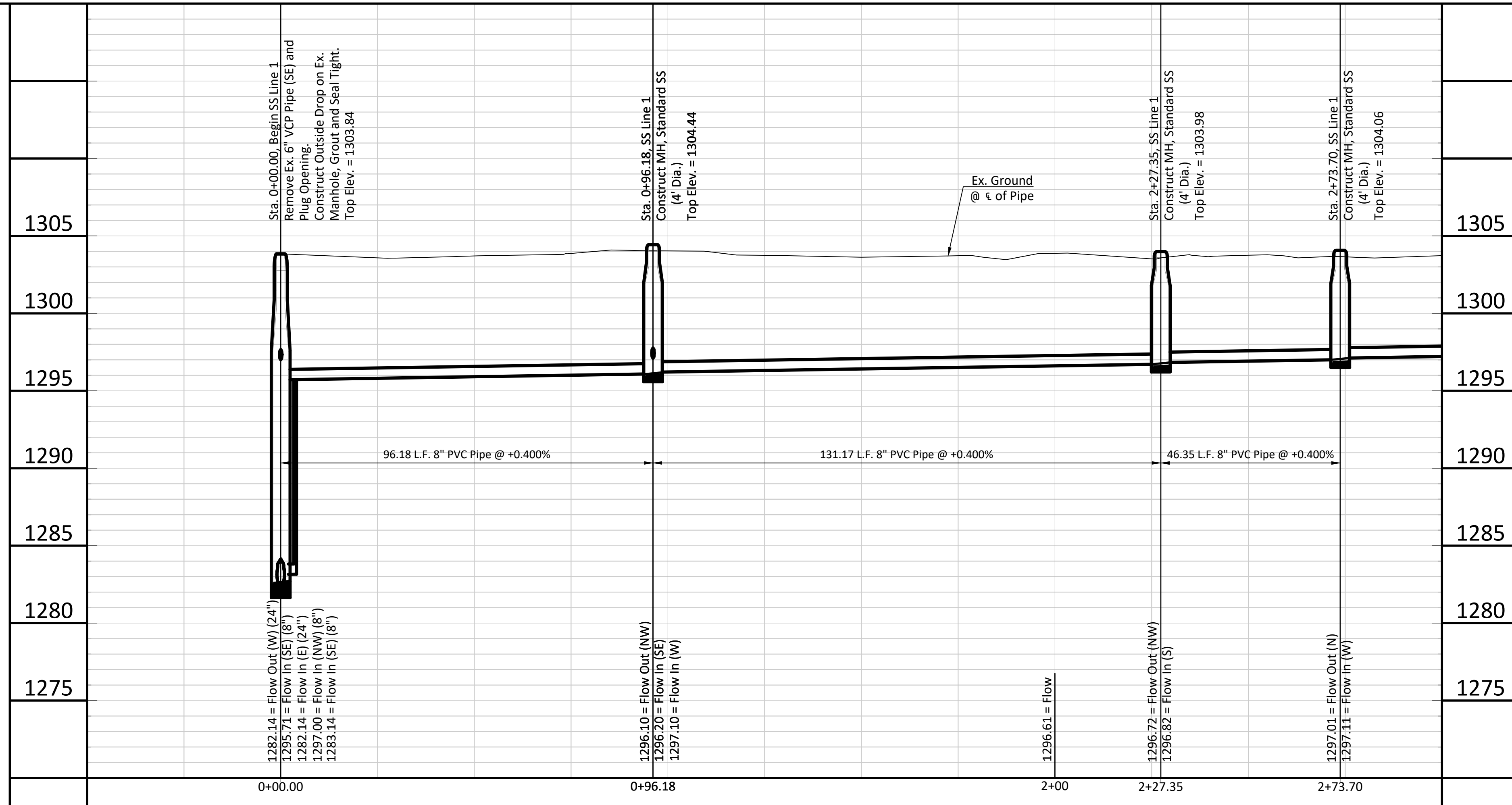
- BM #1 - Chiseled "+" on the Southwest Corner of the Inlet on the Southerly side of George Washington Boulevard Across from the South Drive to the Save A Lot Food Store. Elev. = 1301.99 (NAVD 88)
- BM #2 - Chiseled "+" Cut on Top of the Northwesterly Wingwall of the Bridge over Gypsum Creek at George Washington Boulevard. Elev. = 1304.27 (NAVD 88)
- BM #3 - Chiseled Crows Foot Cut on Top of Curb on the East Side of Cessna Street at the Centerline of the Sidewalk Between Lots 11 and 15. Elev. = 1302.75 (NAVD 88)



The Existing Fences that Conflict with the Proposed Sewer Shall be Removed as Necessary, Stockpiled & Reset After Construction. All Costs Associated with this Work Shall be Considered SUBSIDIARY to the Measured Quantity Bid Item "Fence Removed and Reset".

All Costs Associated with the Abandonment of the Existing SS Pipes and Manholes Shall be SUBSIDIARY to the Lump Sum Bid Item "Removal of Existing Structures".

**Note:**  
Trees/Shrubs to be removed are marked thus:



**BAUGHMAN COMPANY**  
 315 Ellis St. Wichita, KS 67211 316-262-7271  
 baughmanco.com

SANITARY SEWER IMPROVEMENTS  
**Planeview Sanitary Sewer Line 1**  
 Sta. 0+00.00 - Sta. 2+73.71  
 4100 BLOCK OF EAST CESSNA

PROJECT NUMBER: 468-85390  
 INTERNAL NUMBER: 18-11-E127  
 DESIGN: TPV  
 DRAWN: TPV  
 DATE: Feb. 2020  
 SHEET: 3 OF 13