

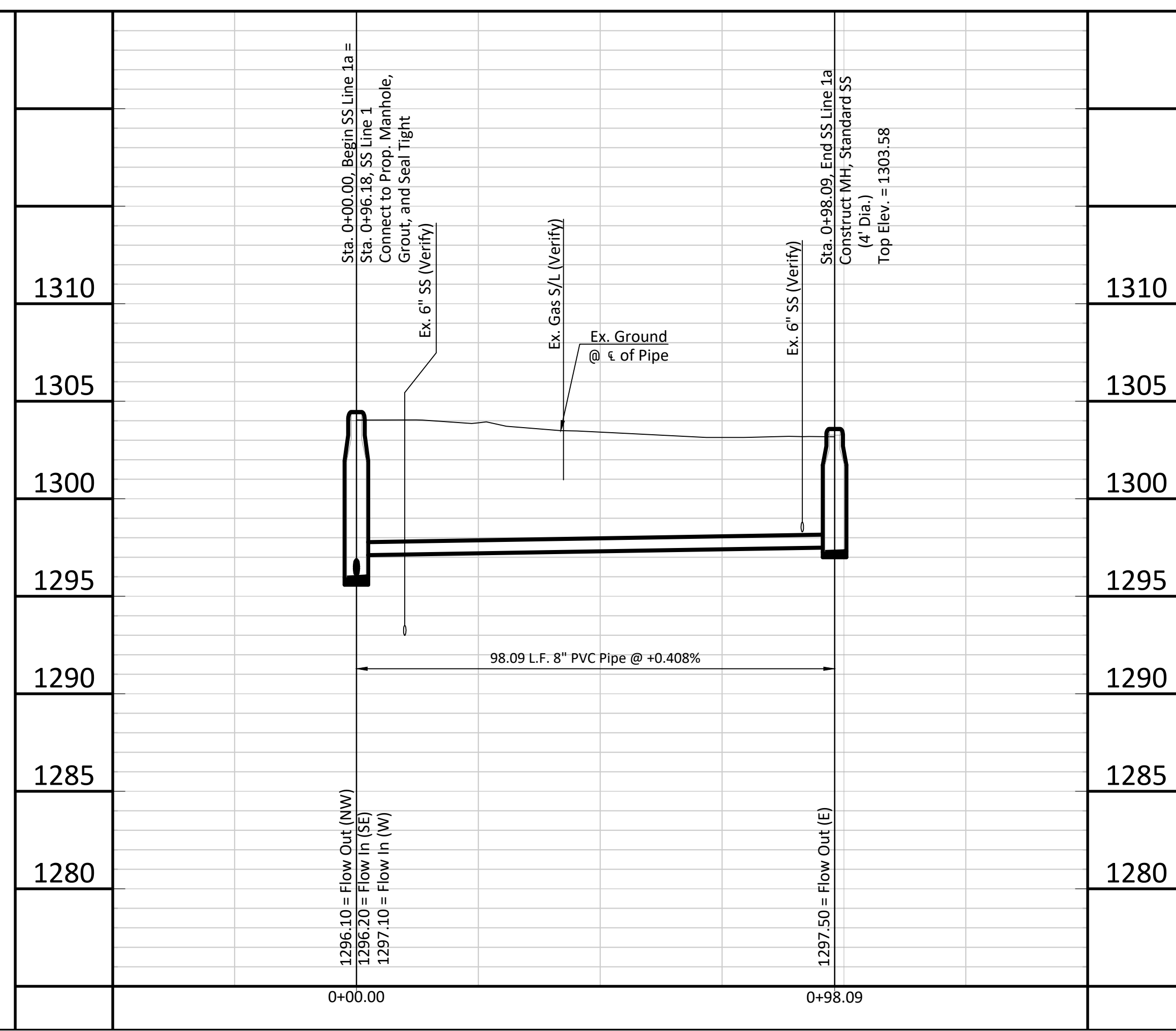
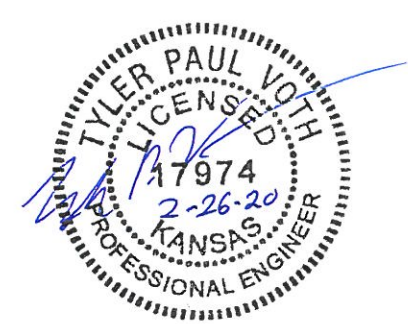
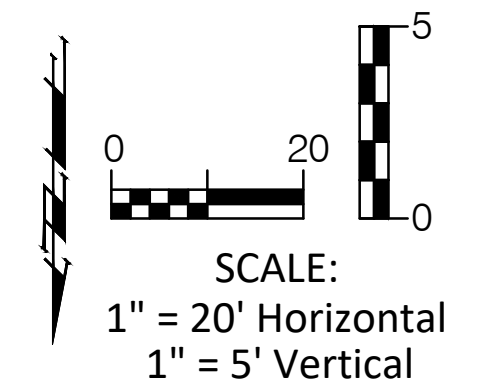
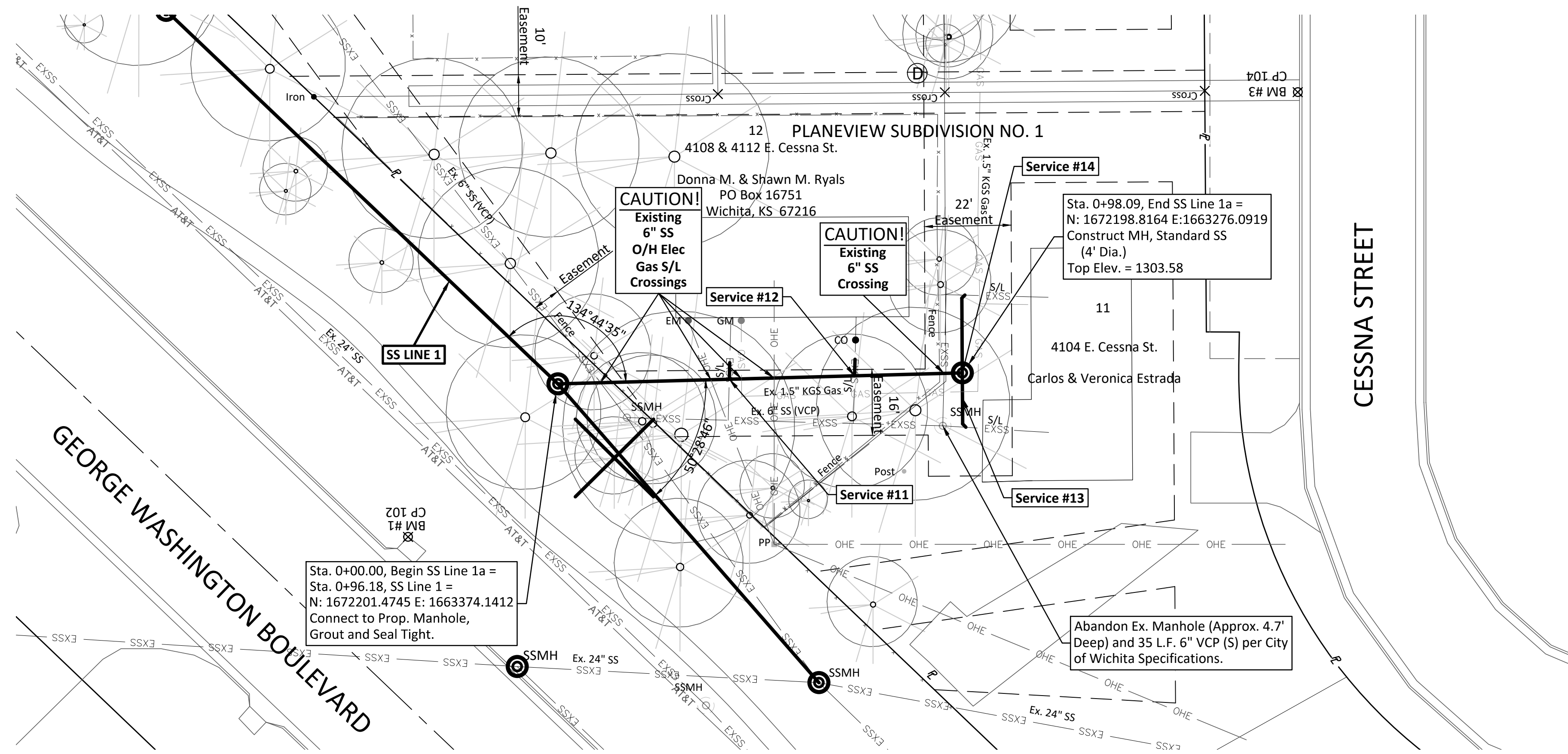
BENCHMARKS

- BM #1 - Chiseled "+" on the Southwest Corner of the Inlet on the Southerly side of George Washington Boulevard Across from the South Drive to the Save A Lot Food Store. Elev. = 1301.99 (NAVD 88)
- BM #2 - Chiseled "+" Cut on Top of the Northwesterly Wingwall of the Bridge over Gypsum Creek at George Washington Boulevard. Elev. = 1304.27 (NAVD 88)
- BM #3 - Chiseled Crows Foot Cut on Top of Curb on the East Side of Cessna Street at the Centerline of the Sidewalk Between Lots 11 and 15. Elev. = 1302.75 (NAVD 88)

The Existing Fences that Conflict with the Proposed Sewer Shall be Removed as Necessary, Stockpiled & Reset After Construction. All Costs Associated with this Work Shall be Considered SUBSIDIARY to the Measured Quantity Bid Item "Fence Removed and Reset".

All Costs Associated with the Abandonment of the Existing SS Pipes and Manholes Shall be SUBSIDIARY to the Lump Sum Bid Item "Removal of Existing Structures".

Note:
Trees/Shrubs to be removed are marked thus:



SEWER SERVICE TABLE

NUMBER	TYPE	LOCATION			FOR INFORMATION ONLY	
		LOT NO.	LINE NO.	STATION/DIRECTION	APPROXIMATE LENGTH PIPE	
					VERTICAL	HORIZONTAL
11	4" Tee	12	1a	0+41.6/Lt.	4'	4'
12	4" Tee	12	1a	0+72.0/Lt.	4'	4'
13	4" MH Connection	11	1a	0+98.1/Rt.	4'	10'
14	4" MH Connection	11	1a	0+98.1/Lt.	4'	20'

Connections to the Existing Services to be installed by a Licensed Drain Layer and will Require a MABCD Permit.
Sewer Code Requires that Service Line Fittings be Limited to 45° Bends or Wyes with a Minimum of 9" Piece of Pipe Between Fittings. Other Methods for Installing Fittings must be Approved by the Superintendent of Central Inspection PRIOR to Construction.

BAUGHMAN COMPANY
315 Ellis St. Wichita, KS 67211 316-262-7271
BaughmanCo.com

BAUGHMAN

SANITARY SEWER IMPROVEMENTS
Planeview Sanitary Sewer Line 1a
Sta. 0+00.00 - Sta. 0+96.00
4100 BLOCK OF EAST CESSNA

PROJECT NUMBER: 468-85390
INTERNAL NUMBER: 18-11-E127
DESIGN: TPV
DRAWN: TPV
DATE: Feb. 2020
SHEET: 5 OF 13