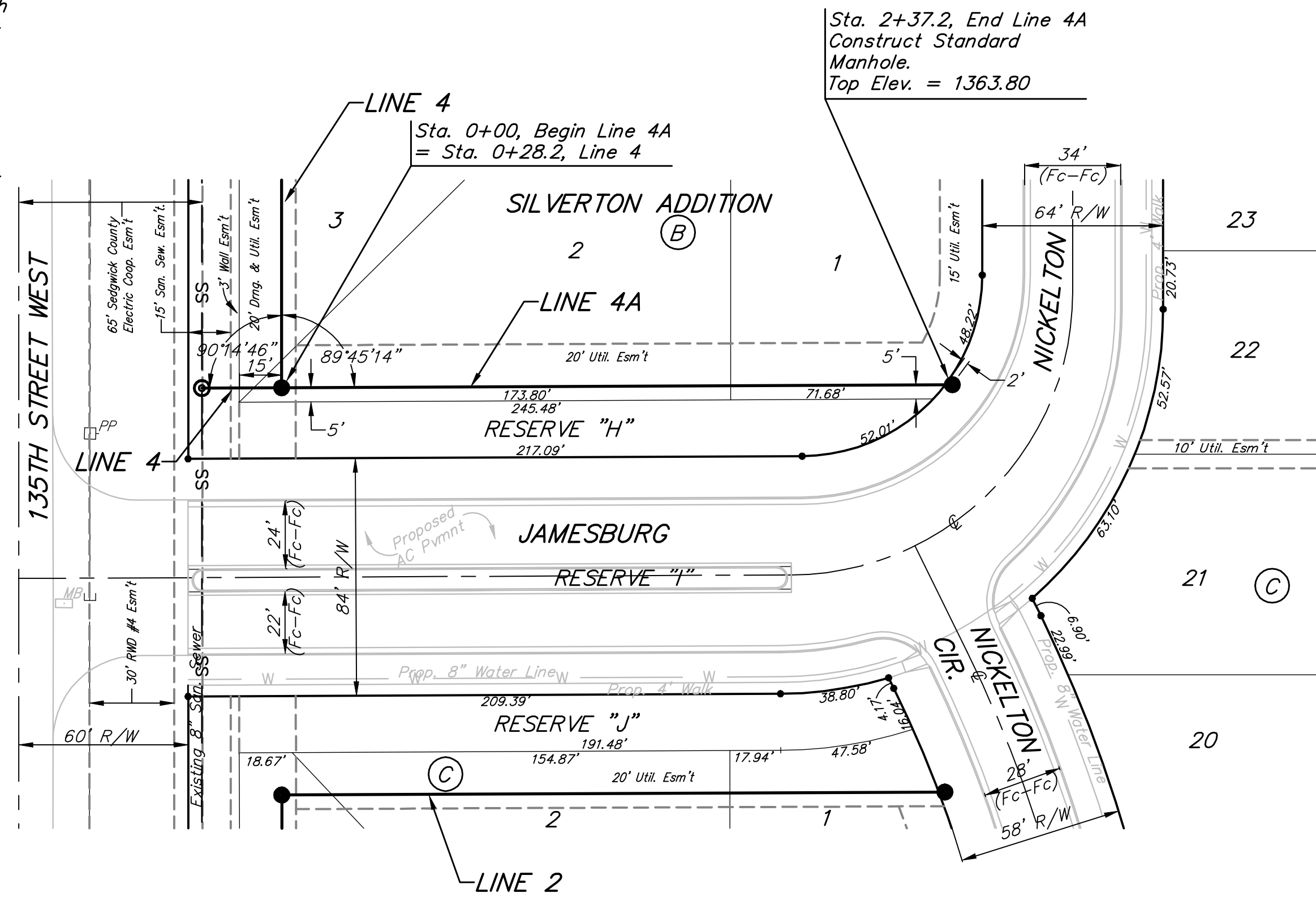


**BENCHMARKS:**  
 135th St. W. & 13th St. N. - City of Wichita Disc at Southwest Corner of Intersection, 30.00'± S. of C of 13th St. N. 35.00'± W. of C of 135th St. W.  
 Elev. = 1355.65 MSL

"□" Cut in Top of Curb 10' South of end of Existing Pavement, East Curb adjacent to Lot 12, Block D, Copper Gate North Addition.  
 Elev. = 1362.13 MSL

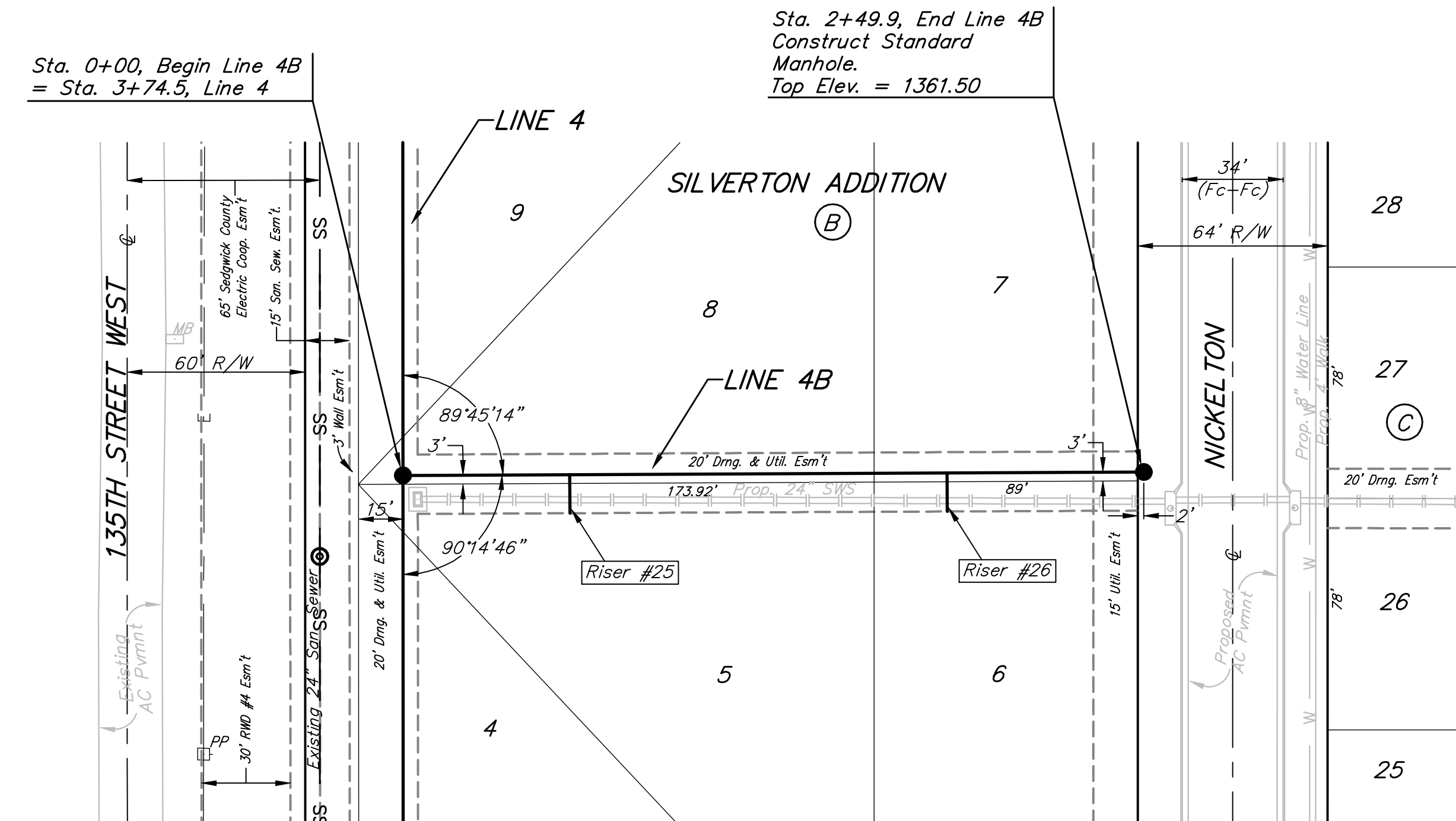
BM Disc in top Curb adjacent to Fire Hydrant at E. End of N. Curb Return of Kiwi & Decker, adjacent to Lot 16, Block D, Copper Gate North Addition.  
 Elev. = 1361.04 MSL



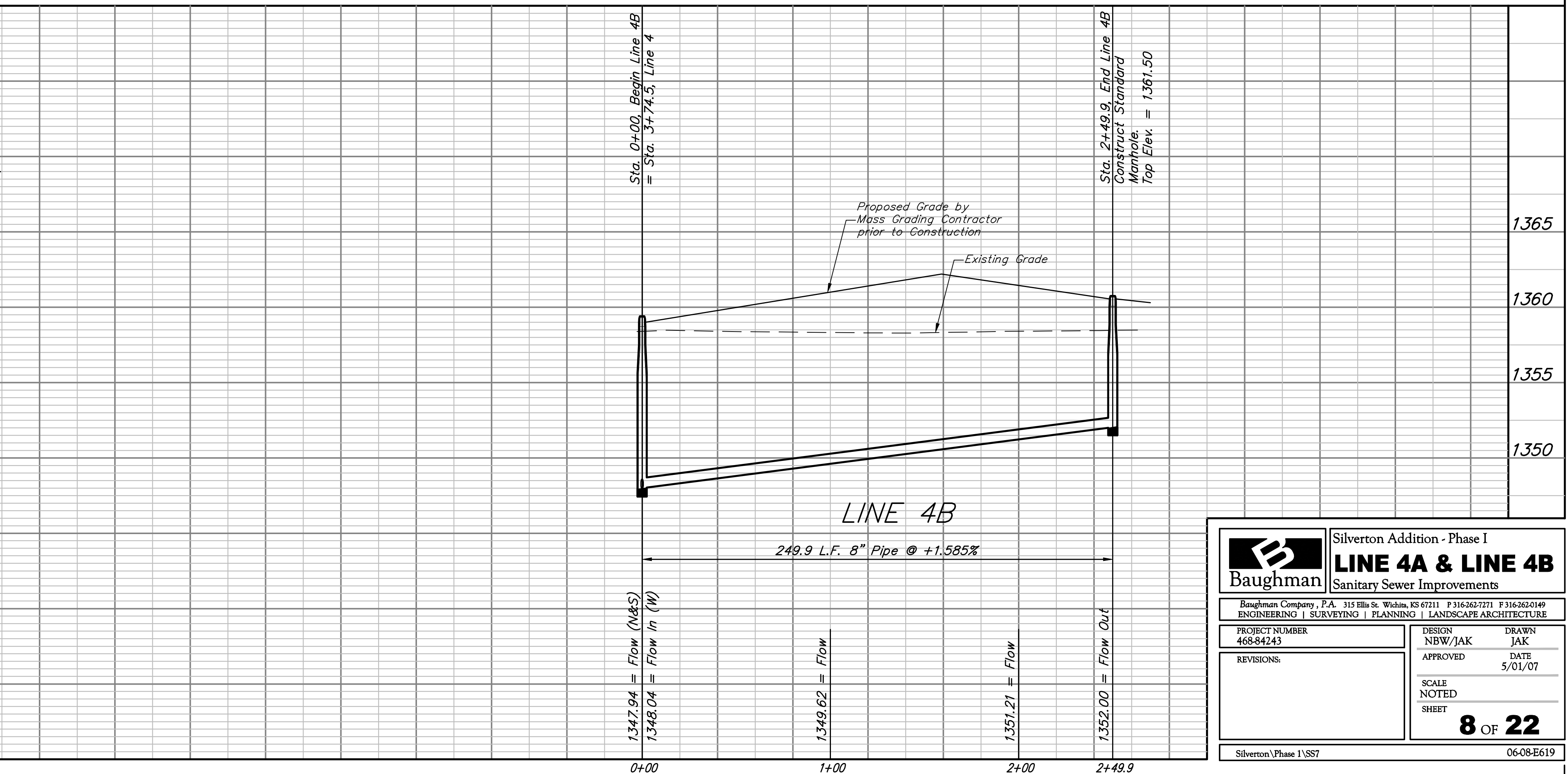
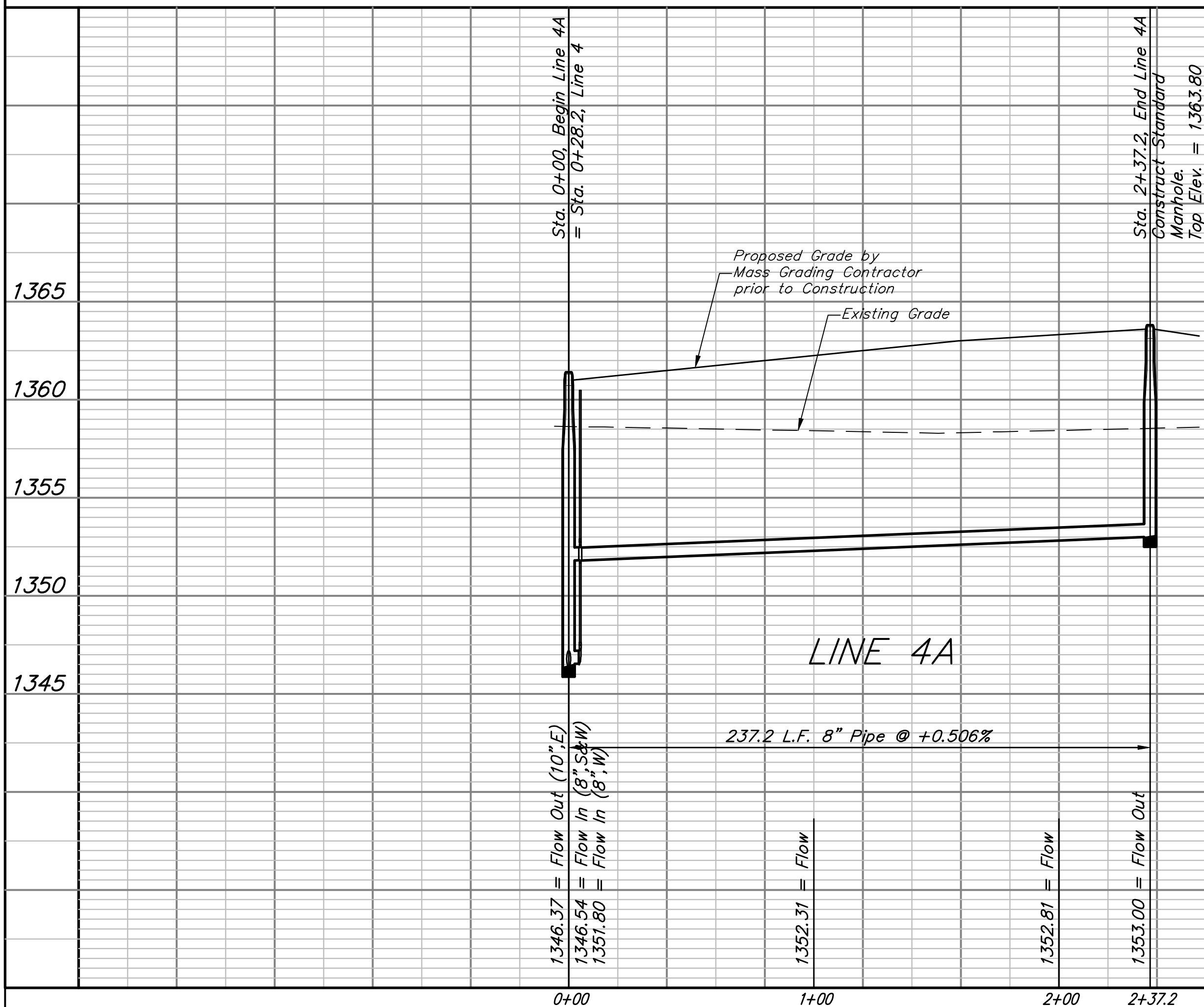
**SEWER SERVICE TABLE**

NUMBER	TYPE	LOCATION			FOR INFORMATION ONLY	
		LOT NO.	BLOCK NO.	LINE NO.	STATION/DIRECTION	APPROXIMATE LENGTH 4" PIPE
25	8" X 4" Tee	5	B	4B	0+58/Rt.	6' VERTICAL 13' HORIZONTAL
26	8" X 4" Tee	6	B	4B	1+85/Rt.	6' VERTICAL 13' HORIZONTAL

NOTE: Vertical Riser Pipe shall be extended to 2' minimum above ground water elevation and 4' maximum below proposed ground elevation.



**SCALE:**  
 1" = 40' HORIZONTAL  
 1" = 5' VERTICAL  
 • = IRON



		Silverton Addition - Phase I	
		<b>LINE 4A &amp; LINE 4B</b>	
Sanitary Sewer Improvements		Baughman Company, P.A. 315 Ellis St. Wichita, KS 67211 P 316-262-7271 F 316-262-0149	
ENGINEERING   SURVEYING   PLANNING   LANDSCAPE ARCHITECTURE		PROJECT NUMBER 468-84243	DESIGN NBW/JAK
REVISIONS:		APPROVED	DATE 5/01/07
		SCALE NOTED	SHEET
		<b>8 OF 22</b>	
Silverton\Phase I\SS7		06-08-E619	