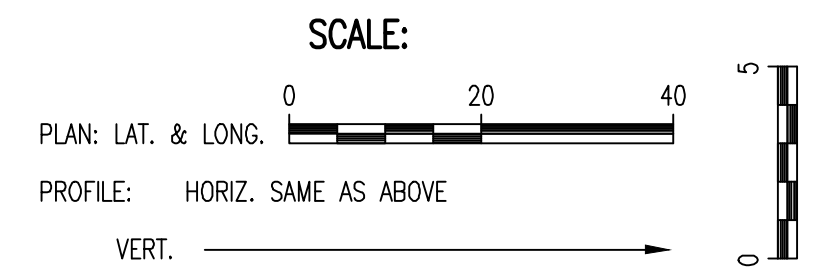


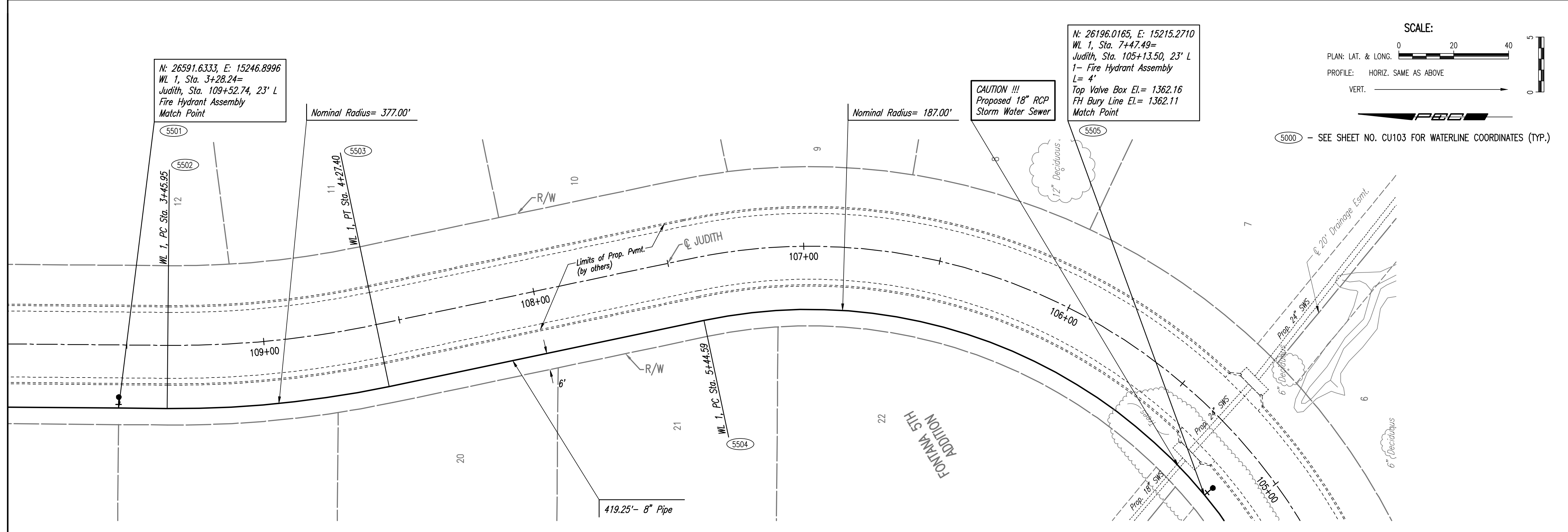
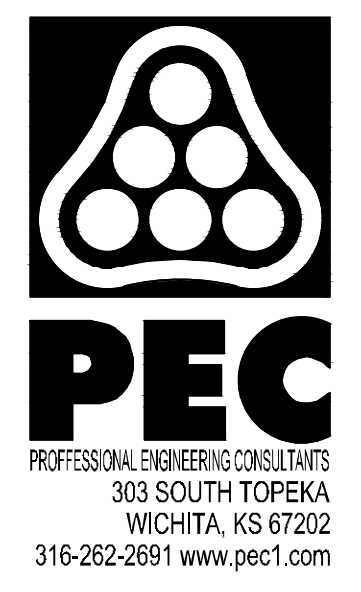
N: 26591.6333, E: 15246.8996
 WL 1, Sta. 3+28.24=
 Judith, Sta. 109+52.74, 23' L
 Fire Hydrant Assembly
 Match Point

N: 26196.0165, E: 15215.2710
 WL 1, Sta. 7+47.49=
 Judith, Sta. 105+13.50, 23' L
 1- Fire Hydrant Assembly
 L= 4'
 Top Valve Box El.= 1362.16
 FH Bury Line El.= 1362.11
 Match Point

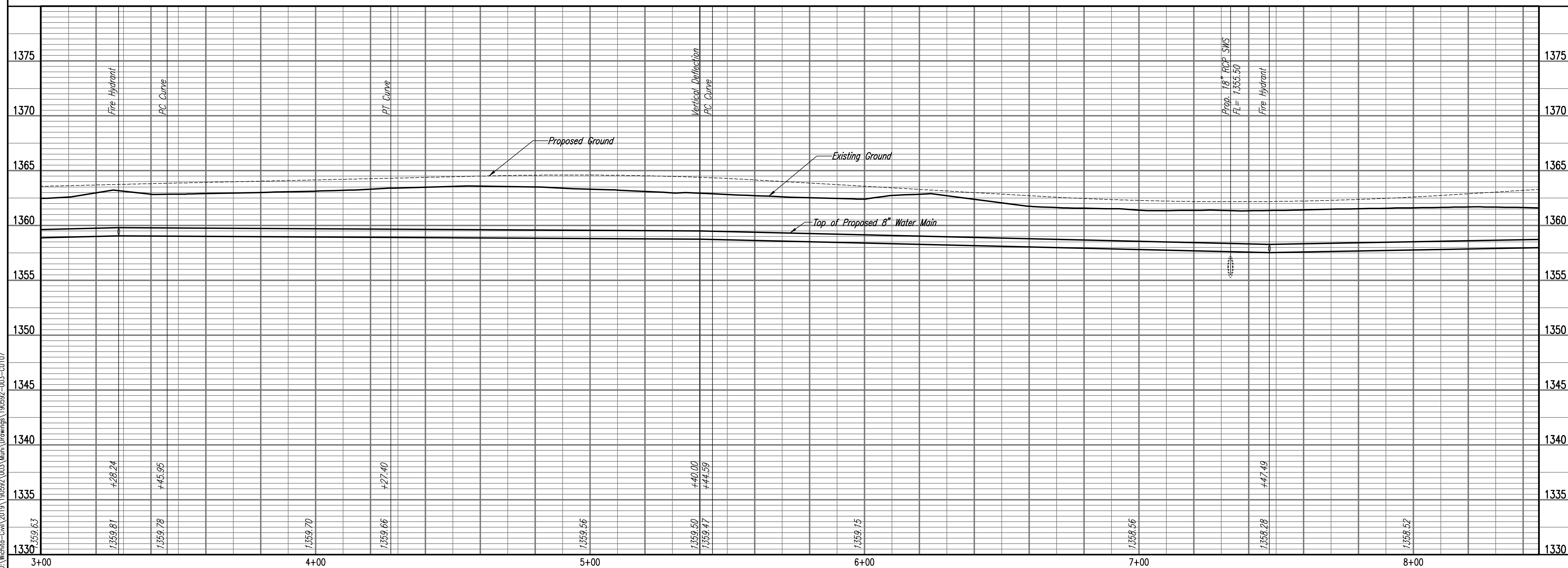
CAUTION !!!
 Proposed 18" RCP
 Storm Water Sewer



(5000) - SEE SHEET NO. CU103 FOR WATERLINE COORDINATES (TYP.)



WATERLINE NO. 1



Saved: 02-17-2020 3:59:47 PM by: KURTIS DEWAT
 Plot: 02-17-2020 3:59:47 PM by: KURTIS DEWAT
 U:\Wichita-Civil\2019\190592\003\Main\Drawings\190592-003-CU107

WATERLINE IMPROVEMENTS
 TO SERVE

FONTANA 5TH - PHASE 2

GARY LANZEN, P.E., CITY ENGINEER
 CITY OF WICHITA, PROJECT NO. 448-90429
 OCA NO. 736657

Issue:	
JOB NO.	35-190592-003-042
DATE	FEBRUARY 2020
PM	TBK
DESIGNED BY	TBK
DRAWN BY	KTD
CHECKED BY	RWG

WATERLINE NO. 1

CU107