

PAVING IMPROVEMENTS
TO SERVE
FONTANA 5TH - PHASE 2

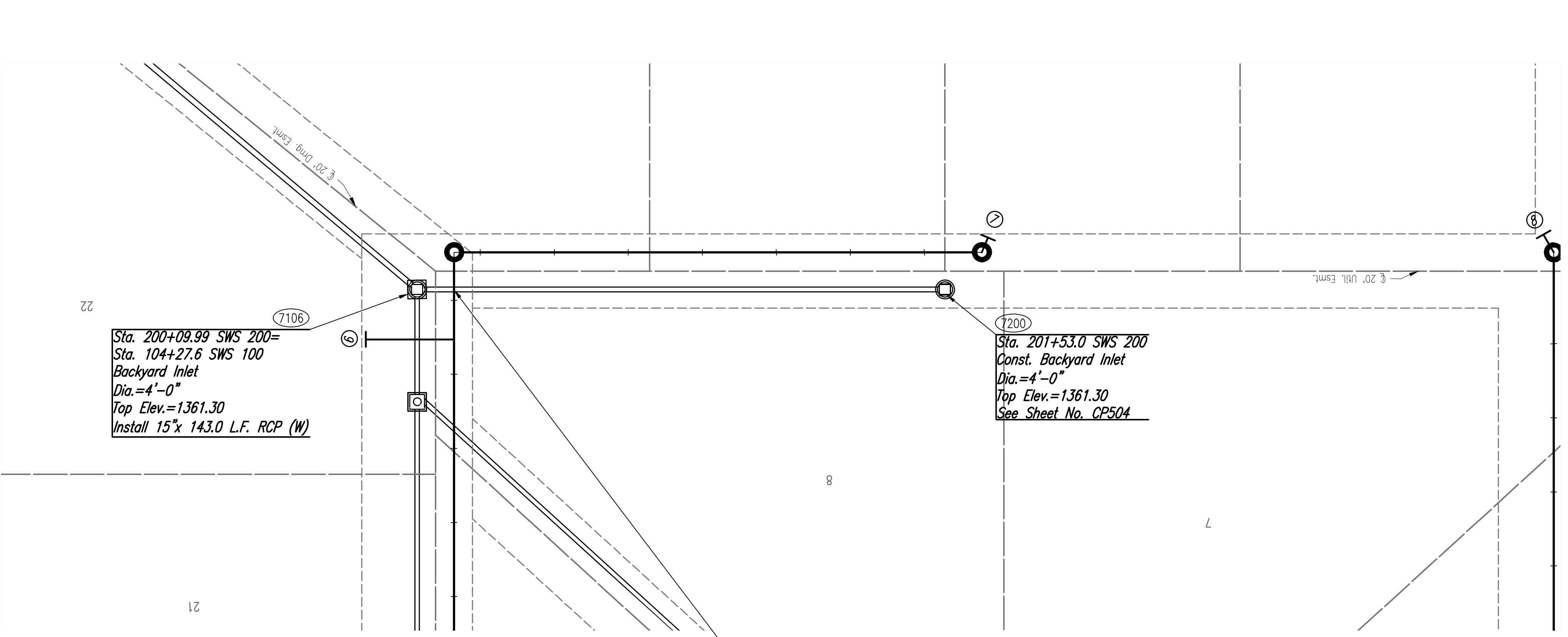
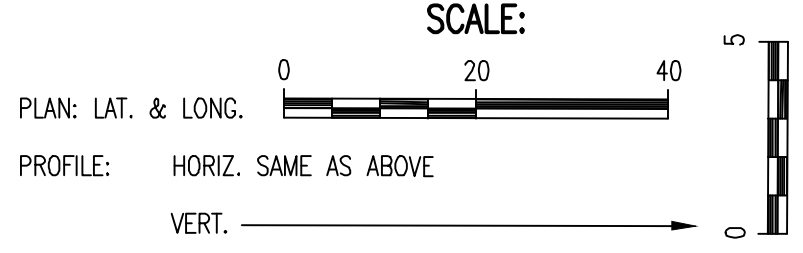
GARY JANZEN, P.E. - CITY ENGINEER
CITY OF WICHITA PROJECT NO. 472-84802
OCA NO. 768486

JOB NO.	190592-000
DATE	FEBRUARY 2020
PM	BMM
DESIGNED BY	AKL
DRAWN BY	BJS
CHECKED BY	RJS

SWS LINE NO. 200
CP203
13 OF 42

COORDINATE LIST		
POINT	NORTH	EAST
7106	26,302.7665	15,112.3428
7200	26,304.0273	14,969.3484

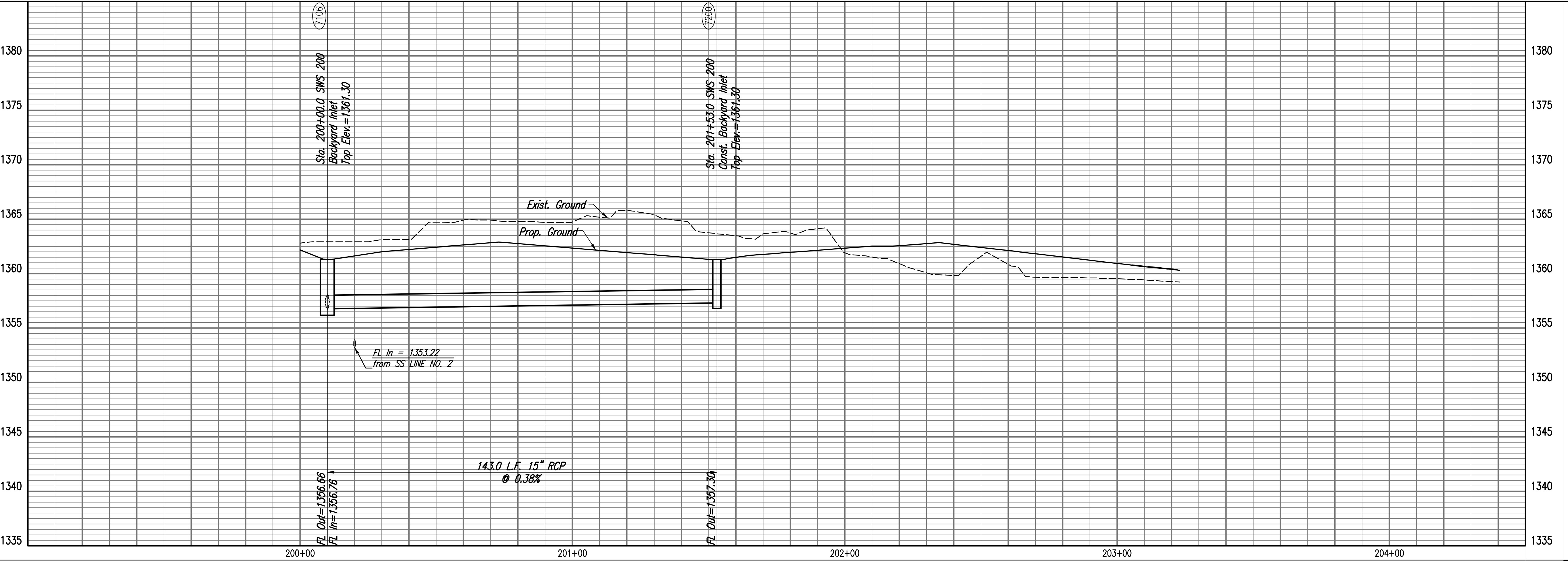
(7106) = COORDINATE POINT NO.



Sta. 200+09.99 SWS 200= Sta. 104+27.6 SWS 100
Backyard Inlet
Dia.=4'-0"
Top Elev.=1361.30
Install 15"x 143.0 L.F. RCP (W)

Sta. 201+53.0 SWS 200
Const. Backyard Inlet
Dia.=4'-0"
Top Elev.=1361.30
See Sheet No. CP504

CAUTION!!!
Propose 8" San. Sewer
(City of Wichita)



Sheet: CP-05-2020-0000_65563_PN by BJS
 Date: 02/11/2020 11:56:48 AM by BJS
 U:\Wichita-Civil\2019\190592\Drawings\190592-000-13-CP203-SWS LINE NO. 200