

GENERAL NOTES:

- Contractor will be required to provide notice to utility companies a minimum of seventy-two (72) hours prior to any excavation, as follows:
 Kansas One-Call 687-2470
 The Contractor must notify the following in case of an emergency:
 AT&T 1-800-246-8464
 Black Hills Energy 1-800-694-8989
 City of Wichita Water & Sewer 1-316-219-8921
 City of Wichita Stormwater 1-316-268-4090
 City of Wichita Traffic 1-316-268-4034
 Cox Communications 1-888-249-3530
 Kansas Gas Service 1-888-482-4950
 Westar Energy 1-800-544-4857
- Utility service lines, poles, etc. are to be adjusted as necessary by others prior to construction unless the plans specifically call for their adjustment by the Contractor or unless the plans specifically identify a utility to be adjusted by its owner during construction. Existing utilities and their location, as shown on the plans, represent the best information obtainable for design. The Contractor will be required to work around existing utilities within the right-of-way which do not conflict with proposed construction.
- Rubble from the removal of miscellaneous structures and excess excavation which is to be wasted shall be disposed of on sites to be provided by the Contractor. These sites shall be approved by the Engineer as to suitability, appearance and site location. Locations, in the opinion of the Engineer, that will leave an unsightly appearance will not be approved. All disposal sites must be approved by the Kansas Department of Health and Environment. Material either stockpiled or disposed of in a flood plain will require a Kansas State Board of Agriculture permit. Any material dumped in waters of the United States or wetlands is subject to U.S. Corps. of Engineers permitting regulations. Any material buried or stockpiled beyond approved construction limits will require additional archaeological investigations unless buried in a previously approved borrow location.
- Trees and shrubs in public right-of-way which are in direct conflict with proposed new construction shall be removed by the Contractor with the City Engineer's approval. Trees and shrubs which are not in direct conflict with proposed new construction shall be saved and protected from damage.
- The Contractor shall give all property owners and/or tenants of developed property abutting the construction of this project a minimum of ten (10) days notice prior to start of construction.
- The Contractor shall be responsible for preserving property irons. The Contractor will be required to re-establish any property irons which are damaged or destroyed by his construction operations. Such irons shall be re-established by a licensed land surveyor in accordance with state laws.
- All elevations shown are NAVD 88.
- A saw cut of at least one-half the depth of existing surface courses or one-fourth the depth of the existing total pavement thickness shall be provided at locations where proposed construction abuts the existing surface course or pavement for which partial removal of that surface or pavement is required. Sawed joint to facilitate removal within three (3) feet of existing joints will not be permitted and for such instances the limits of removal shall extend to the existing joint. Such saw cuts will not be paid for directly and this cost shall be considered as subsidiary to the removal of the surface or pavement.
- Limits of earthwork shall match existing ground elevations at the right-of-way line unless otherwise noted on the plans with a new finished grade elevation. When a new finished grade elevation is shown, the earthwork shall extend one foot beyond the right-of-way line and then slope up or down using permissible slopes to match the existing ground surface.

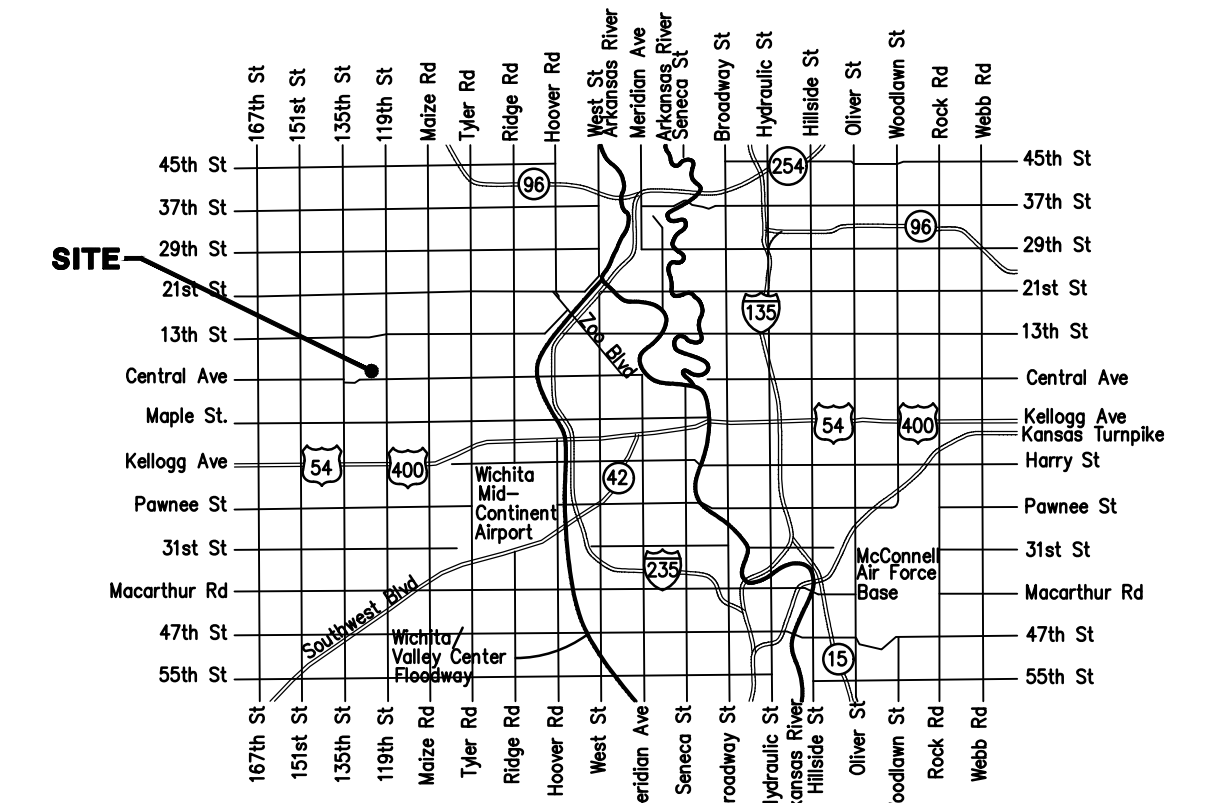
- All Reserves disturbed during construction shall be seeded and mulched as follows:
 Seed -- Kansas Premium Fescue Blend; 8 lbs. PLS/1000 Sq. Ft.
 Annual Rye grass; 3 lbs./1000 Sq. Ft.
 Fertilizer -- 12-24-12 Ratio; 45 Lbs./Ac.
 Mulch -- 2 Tons Prairie Hay/Ac.
 All other disturbed areas are to be seeded as follows:
 Seed -- Rye grass; 5 lbs./1000 Sq. Ft.
 All costs associated with seeding including mobilization, preparation of ground, seeding, fertilizing, mulching, etc. shall be included in the L.S. bid item "Seeding".
 An additional bid item for "Seeding, Temporary" has been included and may be used at the discretion of the design engineer. Temporary seed shall be Annual Rye at 5 lbs./1000 Sq. Ft. unless otherwise noted and shall be planted when permanent seed or sod cannot be used due to seasonal limitations. If the "Seeding, Temporary" bid item is not used, 100% of the pay item will be deducted from the contract. All costs associated with temporary seeding including mobilization, preparation of ground, seeding, etc., shall be included in the L.S. bid item "Seeding, Temporary".

- All existing and proposed erosion control measures including silt fencing, erosion control mat, straw bales, inlet barriers, and const. entrance shall be maintained throughout construction by the contractor and until project is accepted by the City of Wichita. The on-site engineer shall complete weekly reports on the status of erosion control measures. The contractor shall be required to comply with maintenance and/or replacement of erosion control measures as determined by the on-site engineer until project is accepted by City of Wichita. Maintenance and/or replacement of erosion control measures to be paid by L.S. bid item "Maintain Existing BMPs".
- The developer for this project is Castlegate Development LLC, Rodney Ketzner, Manager.

STREET PAVING FOR FIREFLY WITH INCIDENTAL SWS IMPROVEMENTS to serve CASTLEGATE 3RD ADD. - PH. I

Firefly from the south line of Lot 1, Block C, north and easterly to the east line of Lot 11, Block B
 Firefly Ct from the west line of Firefly, west to and including the cul-de-sac (Lots 1 through 5, Block B)
 Firefly Ct from the west line of Firefly, west to and including the cul-de-sac (Reserve D and Lots 6 through 8, Block B)
CITY OF WICHITA, KANSAS

Gary Janzen, P.E. City Engineer
 Project Number 472-2019-085580
 O.C.A. Number 766482

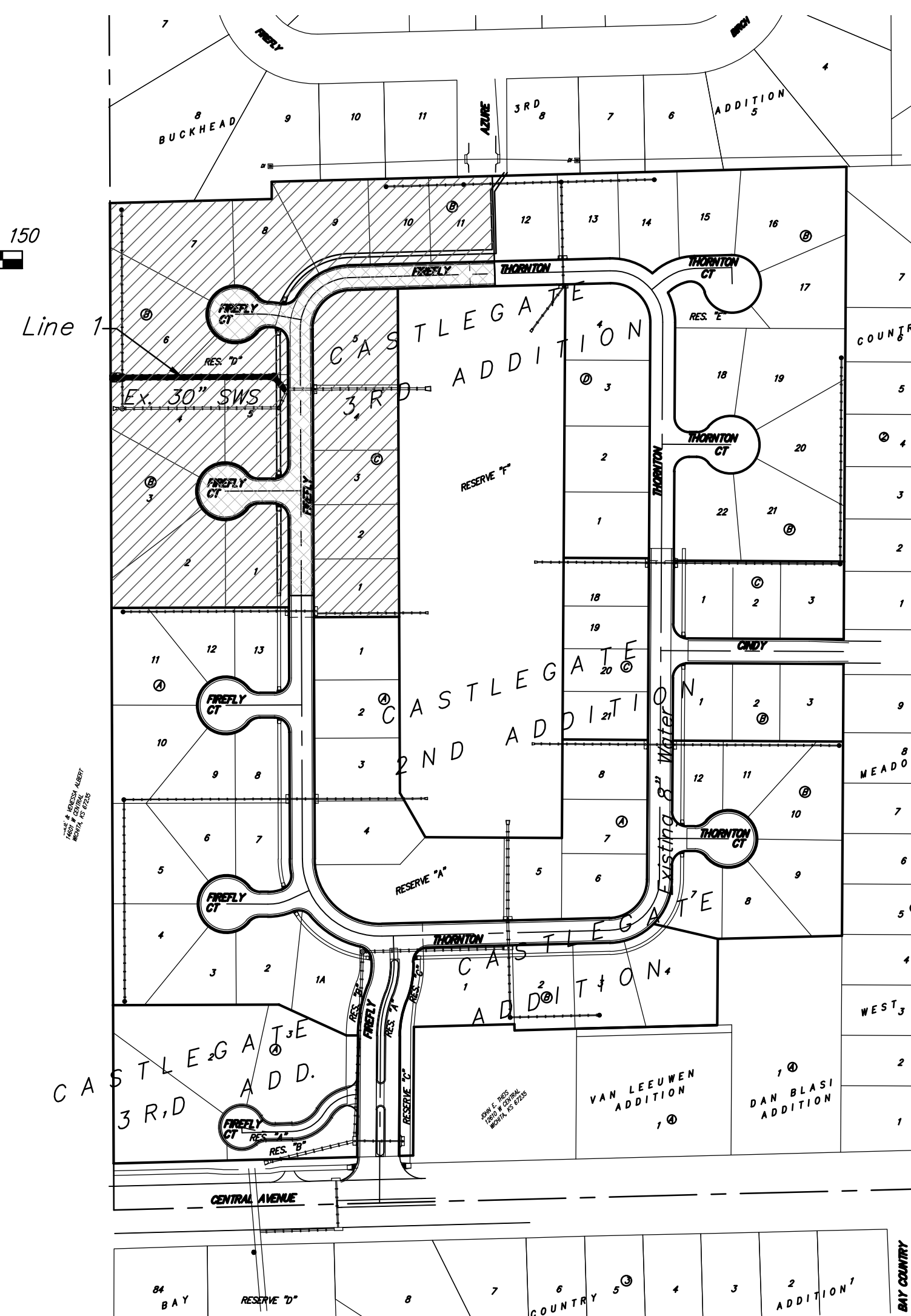
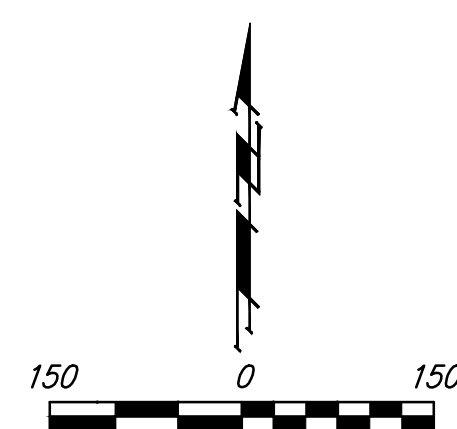


Vicinity Map

Benchmarks

BM #1: CHISELED CROSS CUT ON TOP OF CATCH BASIN, NORTH SIDE OF CENTRAL, 25.4' SOUTH & 95.7' WEST OF THE SOUTHWEST CORNER OF LOT 1, BLOCK A, CASTLEGATE ADDITION.
 ELEV. = 1341.99 (NAVD88)

BM #2: CHISELED PLUS CUT INSIDE OF CHISELED SQUARE CUT, TOP OF CURB ON NORTH SIDE OF CINDY, 2.1' SOUTH & 14.9' EAST OF THE SOUTHEAST CORNER OF RESERVE "E", CASTLEGATE ADDITION.
 ELEV. = 1342.39 (NAVD88)



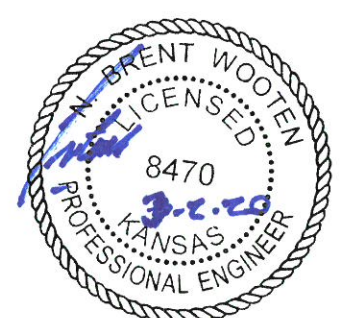
Sheet Index

Title Sheet	1
SWS Line 1	2
Firefly	3-4
Firefly Ct. (Lots 1-5, Block B)	5
Firefly Ct. (Lots 6-8, Block B)	5
Erosion Control/Esmt. Grading Plan	6
Asphalt Paving Detail	7
Curb & Gutter Detail	8
Sign Detail	9
Valley Gutter Detail	10
Wheelchair Ramp Detail	11
Precast Concrete Manhole Detail	12
MH-Inlet Frame & Cover Detail	13
Erosion Control BMP Details	14-18
Street X-Sections	19-22
Coordinate Sheet	23
Copy of Plat	24

Project Earthwork Totals
 Excavation = 1,316 C.Y.
 Loose Fill = 200 C.Y.
 Compacted Fill = 15 C.Y.

Total Project Length
 815 L.F. = 0.16 Miles

Benefit District 
 Proposed Streets 



February 2020



Baughman Company, P.A. 315 Ellis St. Wichita, KS 67211 P 316-262-7271 F 316-262-0143
 ENGINEERING | SURVEYING | PLANNING | LANDSCAPE ARCHITECTURE