

BENCHMARKS:
 BM #1: CHISELED CROSS CUT ON TOP OF CATCH BASIN, NORTH SIDE OF CENTRAL, 25.4' SOUTH & 95.7' WEST OF THE SOUTHWEST CORNER OF LOT 1, BLOCK A, CASTLEGATE ADDITION.
 ELEV. = 1341.99 (NAVD88)

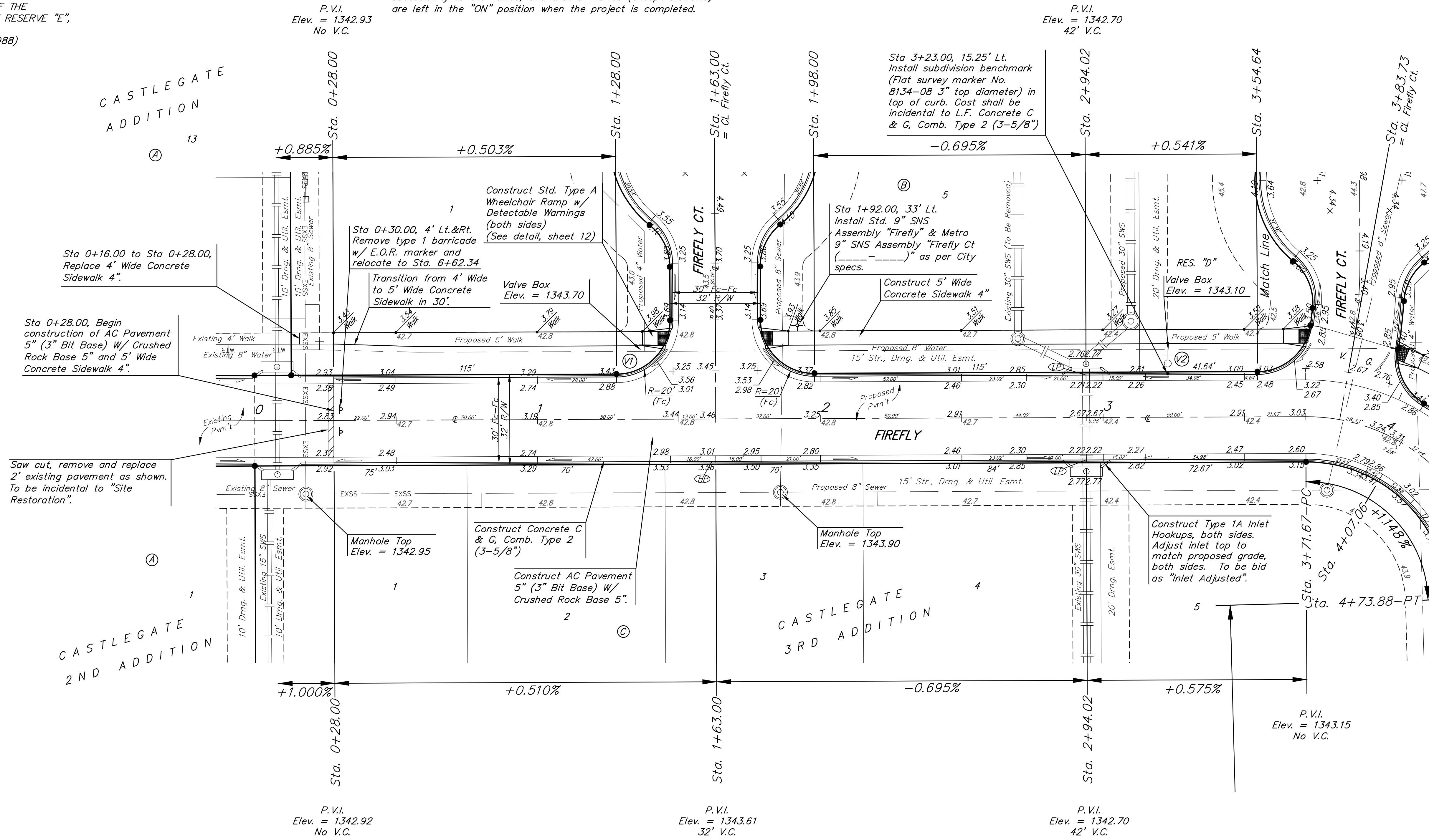
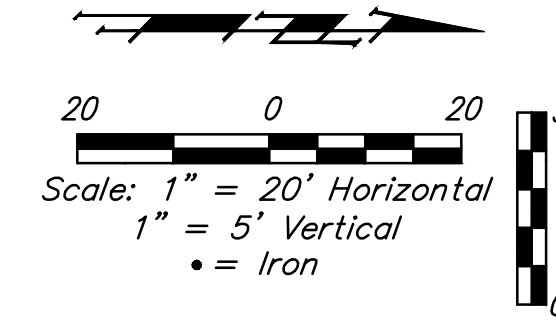
BM #2: CHISELED PLUS CUT INSIDE OF CHISELED SQUARE CUT, TOP OF CURB ON NORTH SIDE OF CINDY, 2.1' SOUTH & 14.9' EAST OF THE SOUTHEAST CORNER OF RESERVE "E", CASTLEGATE ADDITION.
 ELEV. = 1342.39 (NAVD88)

WATER VALVE LOCATION TABLE

| VALVE NUMBER | STREET | BASELINE STATION | OFFSET DISTANCE | OFFSET DIRECTION |
|--------------|---------|------------------|-----------------|------------------|
| V1 | Firefly | 1+38.00 | 24' | Lt. |
| V2 | Firefly | 3+23.00 | 24' | Lt. |

Paving contractor will be responsible to operate all water valves on the project, in the presence of the inspector, to ensure accessibility to the valves, and that all valves (except blowoffs) are left in the "ON" position when the project is completed.

| Subdivision Bench Marks | | |
|--------------------------------|---|-----------|
| Street & Station | Location Description | Elevation |
| Firefly 3+23.00, 15.25' Lt. | Adjacent to Fire Hydrant near SE corner of Res. "D", Castlegate 3rd Addition. | |



NOTE: ROLL TYPE CURB & GUTTER (TYPE 2) TO BE CONSTRUCTED ON THE PAVEMENT SHOWN ON THIS SHEET. TOP OF CURB ELEVATIONS ARE GIVEN FOR FULL HEIGHT CURB (TYPE 4).

Castlegate 3rd Add. - PH. 1
FIREFLY
 STREET IMPROVEMENTS
 Baughman Company, P.A.
 ENGINEERING, ARCHITECTURE, PLANNING, LANDSCAPE ARCHITECTURE
 1145 W. WALTON ST. #211, PHILADELPHIA, PA 19106
 P: 215.563.8800 F: 215.563.8801
 www.baughman.com
 Date: 02/20/20