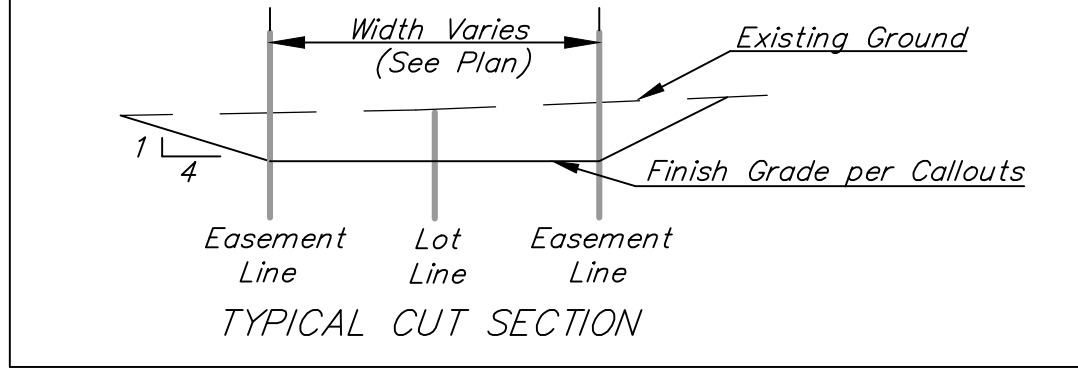
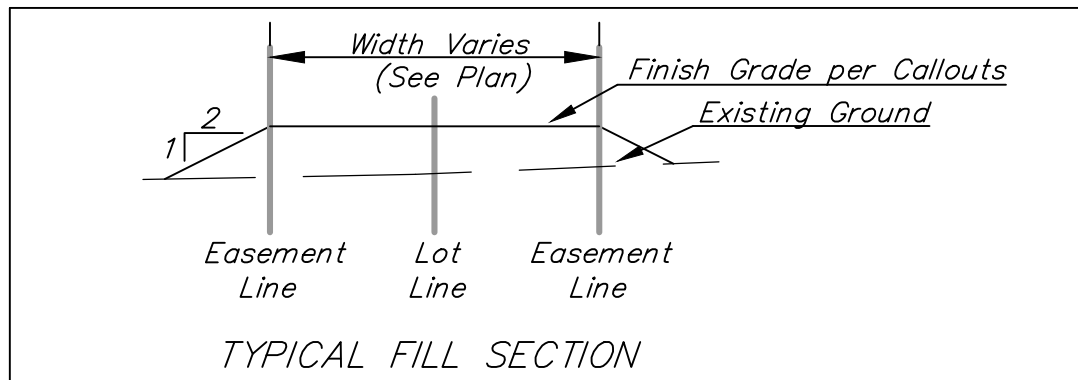
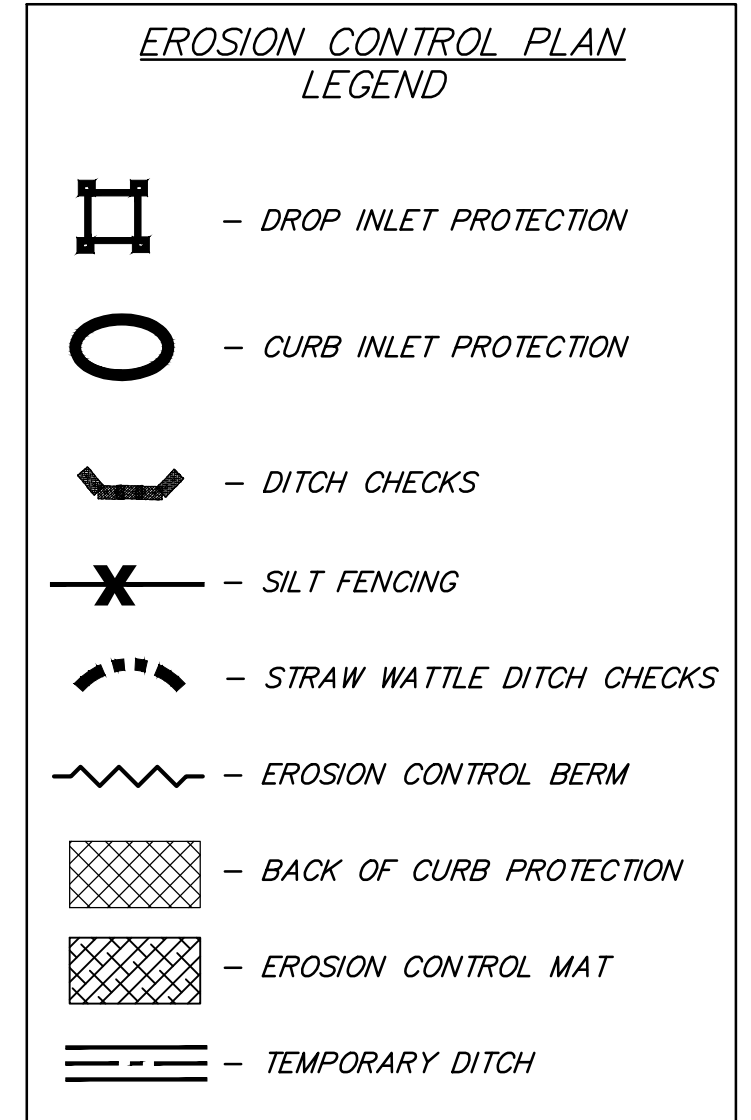
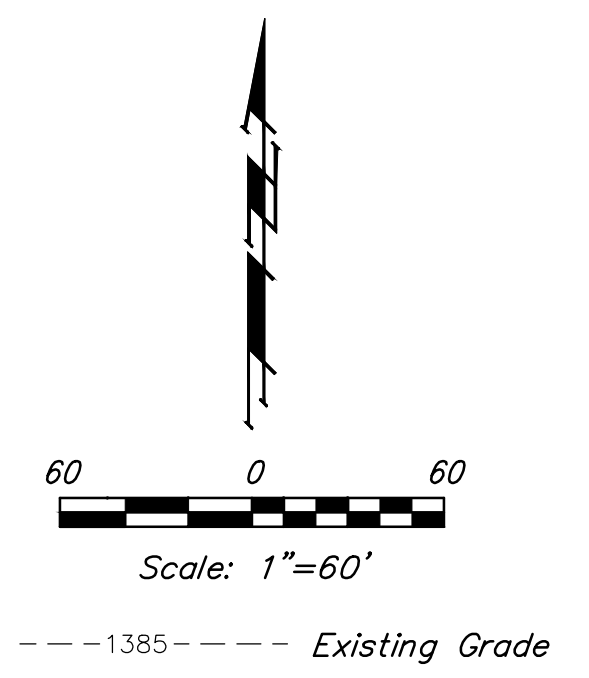


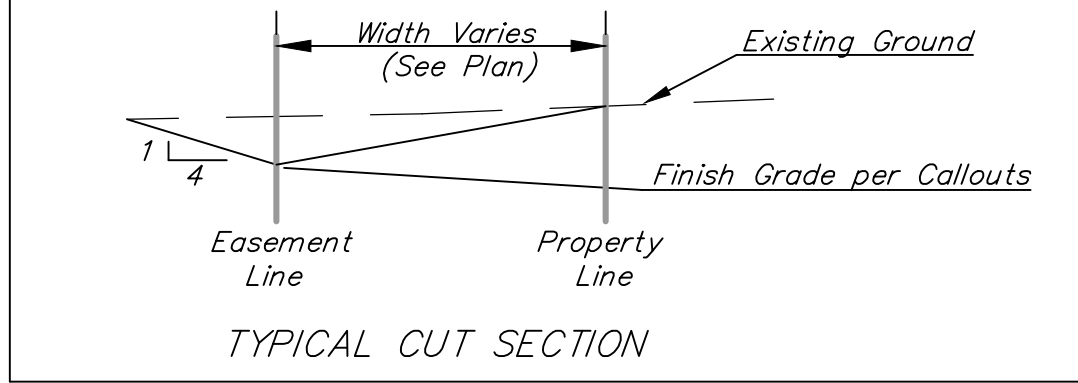
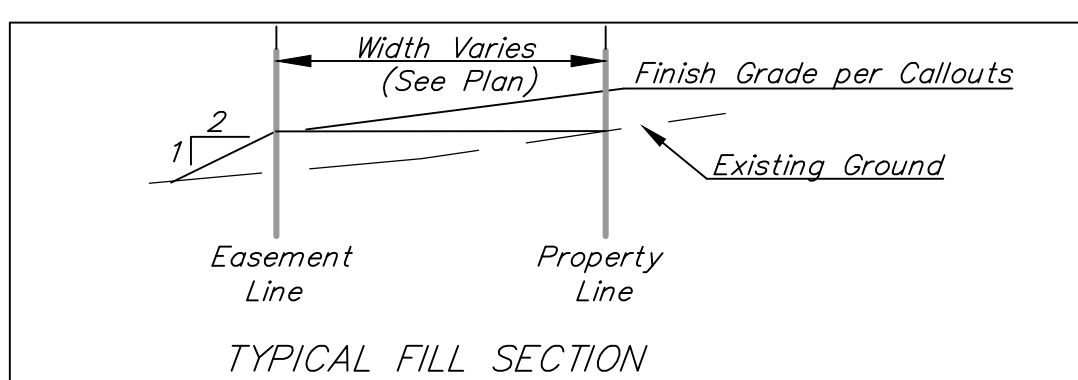
EROSION CONTROL MEASURE	INSTALL	MAINTAIN	REMOVE
BACK OF CURB PROTECTION (LF)	1,730	0	0
CONSTRUCTION ENTRANCE (EA)	0	1	0
CURB INLET BARRIER (EA)	0	8	0
DITCH CHECK (EA)	0	0	0
DROP INLET PROTECTION (EA)	1	7	0
EROSION CONTROL (LS)	0	0	0
EROSION CONTROL BERM (LF)	0	0	0
SILT FENCE (LF)	0	612	0
EROSION CONTROL MAT (SY)	0	0	0

QUANTITIES ARE FOR INFORMATION ONLY! CONTRACTOR SHALL VERIFY QUANTITIES PER FINAL BID QUANTITY SHEET.

* ALL EXISTING BMPs INCLUDING CONSTRUCTION ENTRANCE, SEDIMENT BARRIERS, SILT FENCE, EROSION CONTROL BERM, AND EROSION CONTROL MAT SHALL BE MAINTAINED AND REPAIRED IF NECESSARY. REPLACEMENT OR REMOVAL OF EROSION CONTROL MEASURES TO BE PAID FOR BY L.S. BID ITEM "MAINTAIN EXISTING EROSION CONTROL BMPs"



SECTION A-A



SECTION B-B

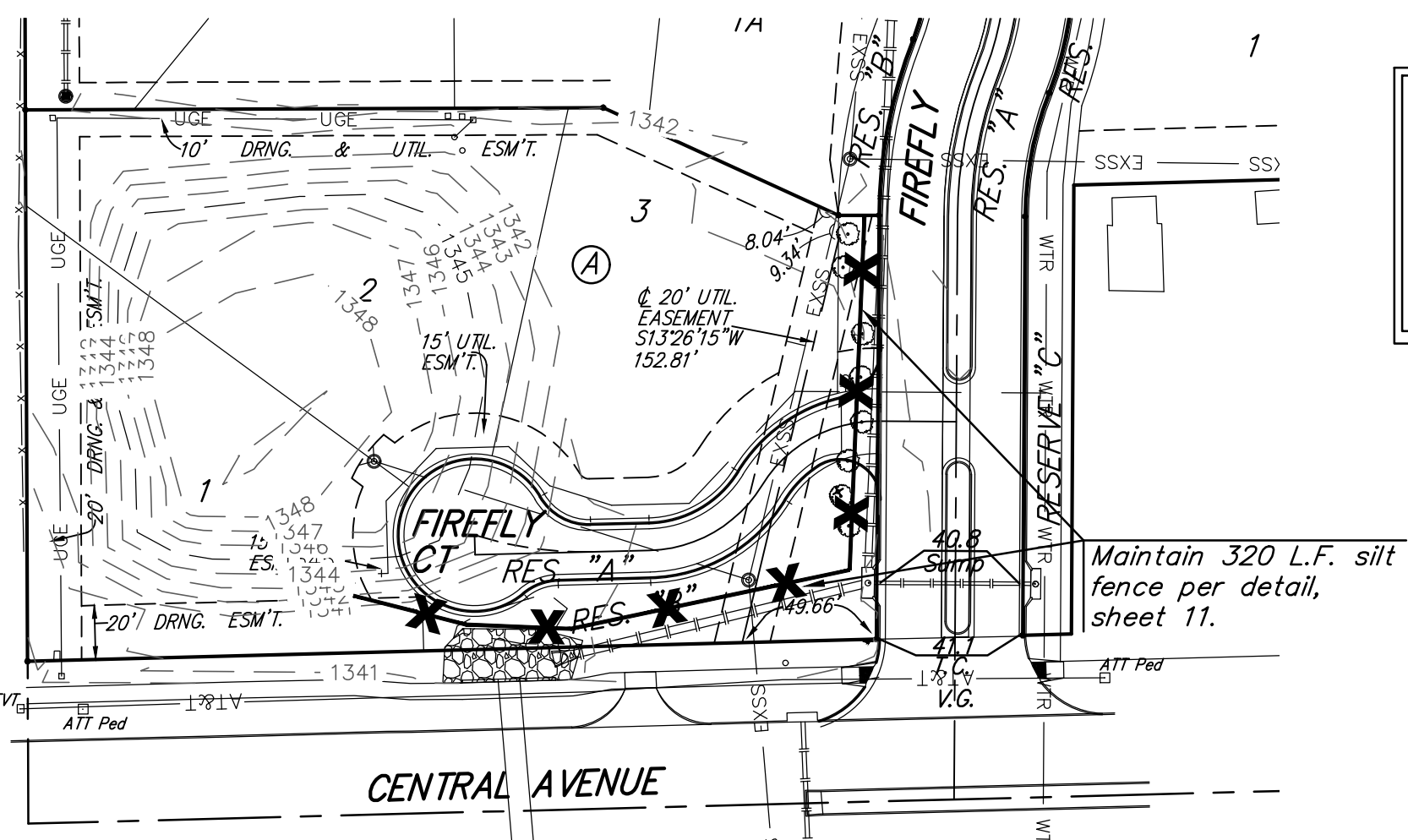
Area to be graded Proposed Grades

Approximate Easement Grading Quantities:
 (For Information Only)
 Excavation: 700 C.Y.
 Fill: - C.Y.

NOTE: 15' Street, Drng. & Util. Esmt adjacent to street R/W are to be graded with this project. The work for that grading are NOT included in the bid item "Easement Grading", nor are the earthwork quantities included in the quantities above. Earthwork quantities for grading the 15' Street, Drng. & Util. Esmt are included in bid items "Excavation" and "Fill, Compacted (95% Density)".

The contractor shall fill and grade the easements as shown to the elevations given on the easement grading plan. All costs for grading shall be incidental to the Easement Grading Bid Item. The contractor shall "straight" grade the easements between the elevations given. Where a callout designates "Match", the contractor will grade to the existing ground elevation. The existing ditch cross sections are shown below.

NOTE: Developer of Castlegate 3rd Addition is responsible for removal of the following items currently on the project lots prior to street construction proceeding infrastructure: dead trees with root balls, wooden fence posts, buried steel pipes, stone pallets, mortar, wire spools, rubble piles, light poles, concrete rubble dumps, and debris piles.



*NOT IN FRANKS ALBERT
 WCHITA, MS 67235

Baughman Company, P.A.
 ENGINEERING, PLANNING & ARCHITECTURE
 1001 W. CENTRAL AVENUE, SUITE 200
 WCHITA, MS 39381
 APPROVED: [Signature] DATE: 02/20/20

CASTLEGATE 3RD ADD. - PH. I
 ESMT. GRADING & PLAN
 EROSION CONTROL PLAN
 STREET & SWS IMPROVEMENTS