

INDEX OF SHEETS

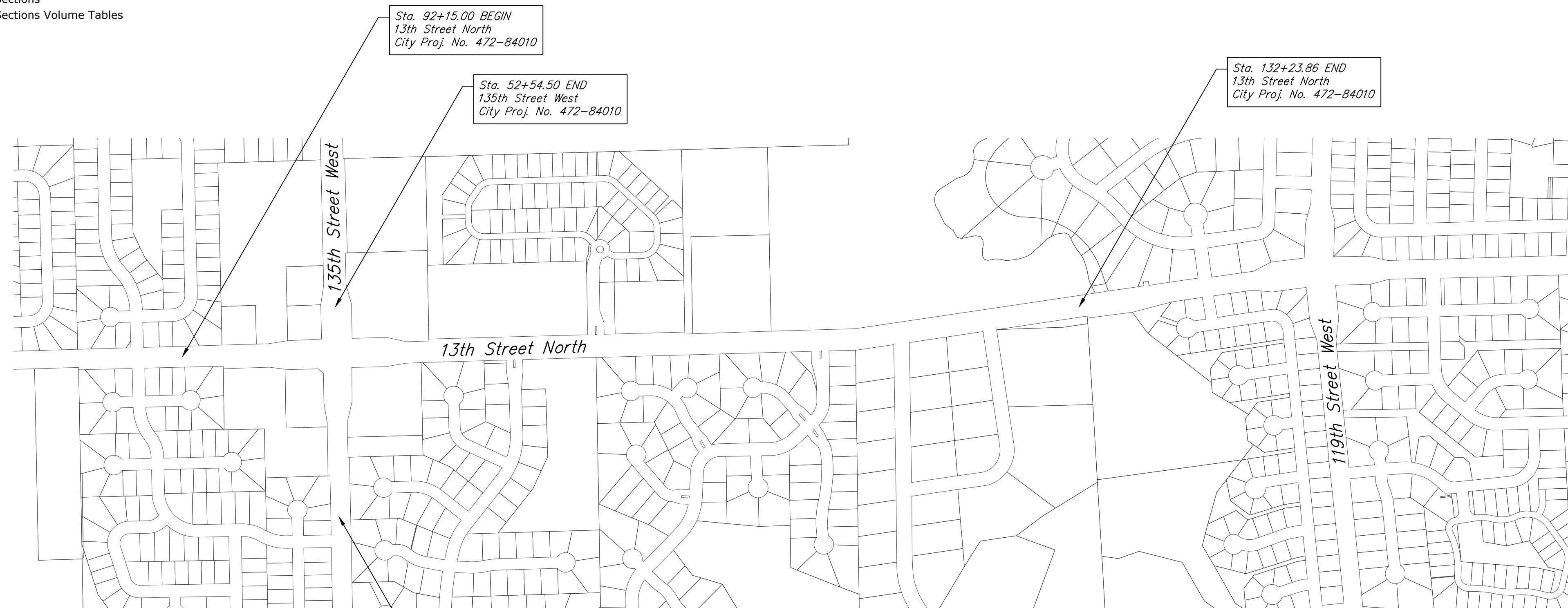
- 1 Title Sheet
- 2 General Notes
- 3-6 Typical Sections
- 7-13 13th Street North Plans
- 14-15 135th Street West Plans
- 16 Intersection Detail
- 17-19 Sidestreet Plans
- 20-22 Paving Bubble Maps
- 23 Sidewalk Point Tables
- 24-28 Pavement Details
- 29 Water Plans & Profiles
- 30-32 Water Details
- 33-50 Storm Sewer Plans & Profiles
- 51-52 Schedule of Inlets and Manholes
- 53-55 Storm Sewer Bubble Maps
- 56-63 Storm Sewer Details
- 64-72 Landscape Plans
- 73 Landscape Details
- 74-75 Erosion Control Plans
- 76-80 Erosion Control Details
- 81-89 Construction Sequencing Plans & Details
- 90-93 Permanent Signing & Marking Plans & Details
- 94-114 Cross Sections
- 115 Cross Sections Volume Tables

PLAN AND PROFILE OF PROPOSED
City Project # 472-84010
OCA # 706913

13th STREET NORTH

WICHITA, SEDGWICK COUNTY, KS
POPULATION: 374,445
2018

**GRADING
SURFACING
PAVEMENT MARKING
LANDSCAPING**

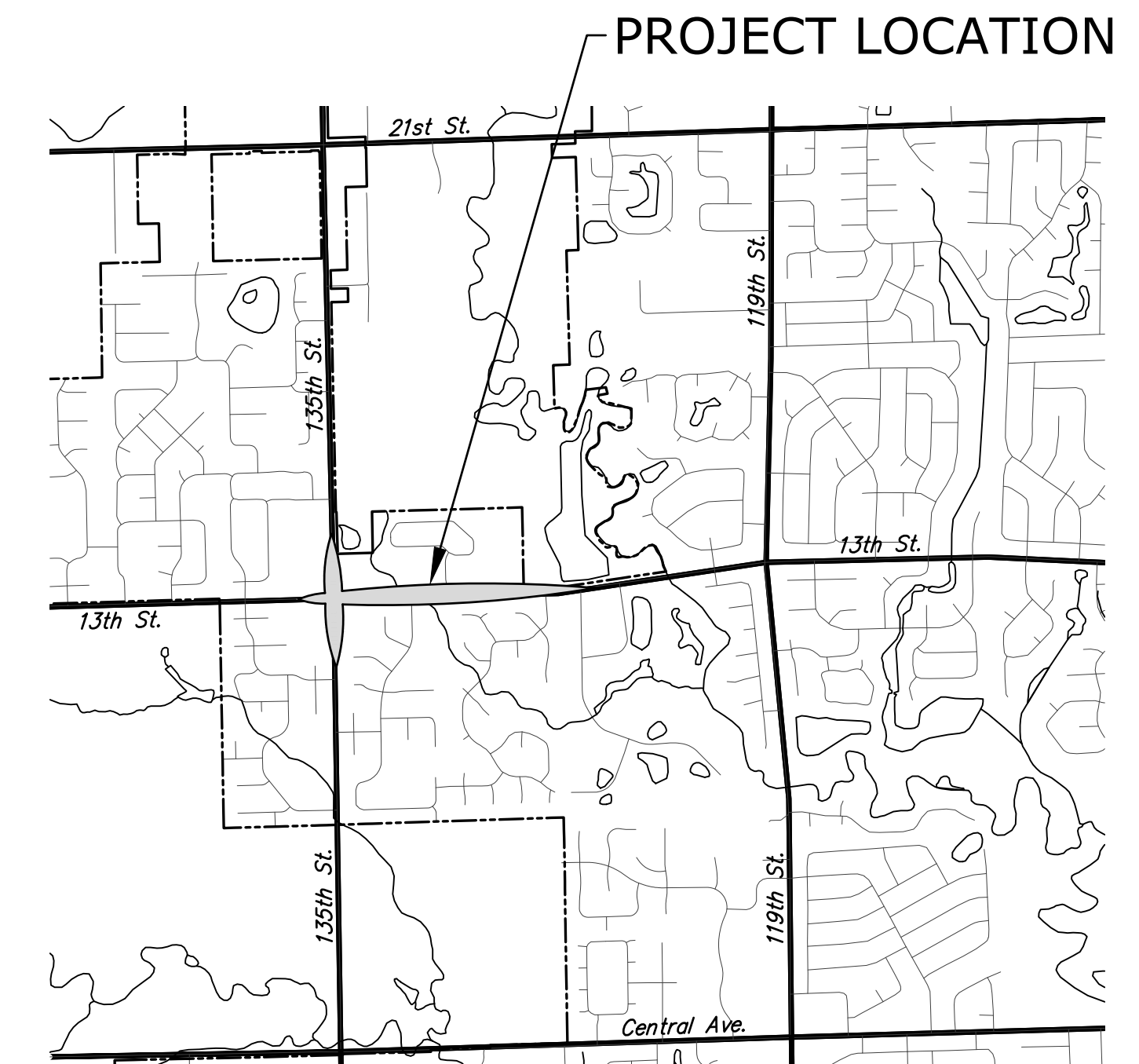
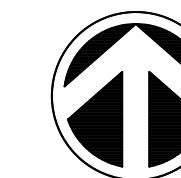


Sta. 92+15.00 BEGIN
13th Street North
City Proj. No. 472-84010

Sta. 52+54.50 END
135th Street West
City Proj. No. 472-84010

Sta. 132+23.86 END
13th Street North
City Proj. No. 472-84010

Sta. 41+65.00 BEGIN
135th Street West
City Proj. No. 472-84010



LOCATION MAP

BENCHMARKS

- BM# 1 City of Wichita Disc on Power Pole Concrete Pad S. Side 13th St. N.
13th St. Sta. 99+68.03, 27.65' Rt.
N 1693105.3268 E 1602103.1739 Elev.=1356.07
- BM# 2 Square Cut N. Nose of Island at Forestview and 13th St. N.
13th St. Sta. 109+05.00, 64.29' Rt.
N 1693096.6540 E 1603040.1453 Elev.=1347.78
- BM# 3 Square Cut on Sidewalk at Lakeside Church
13th St. Sta. 116+15.57, 64.27' Lt.
N 1693246.2728 E 1603747.3109 Elev.=1349.34
- BM# 4 Square Cut N. Nose of Island at Hickory Creek and 13th St. N.
13th St. Sta. 124+66.32, 61.23' Rt.
N 1693146.2468 E 1604601.3925 Elev.=1340.32
- BM# 6 Square Cut E. Back of Curb at 13th Court and 13th St. N.
13th St. Sta. 95+97.59, 68.25' Lt.
N 1693191.0195 E 1601730.2464 Elev.=1361.36
- BM# 7 Square Cut on Power Pole Concrete Pad N. Side 13th St. N.
13th St. Sta. 104+13.39, 31.72' Lt.
N 1693177.8817 E 1602546.6387 Elev.=1354.50
- BM# 8 R.R. Spike in S. Face of a Power Pole N. Side of 13th St. N.
13th St. Sta. 119+70.02, 30.83' Lt.
N 1693223.4264 E 1604102.5927 Elev.=1343.86
- BM# 9 Square Cut E. End of Return at Azure and 13th St. N.
13th St. Sta. 133+72.58, 24.59' Rt.
N 1693292.2190 E 1605501.9250 Elev.=1335.91
- BM# 10 "M" in Mueller on top of Fire Hydrant near the Southwest corner of the Westar Substation.
135th St. Sta. 44+69.47, 33.37' Rt.
N 1692604.1003 E 1602178.4973 Elev.=1356.92

HORIZONTAL CONTROL

- S. 1/4 Cor., Sec. 11, T27S, R2W - Sedgwick County Aluminum Cap 0.4' Below Surface
13th St. Sta. 73+56.90 0.00' Rt.
N 1693061.29 E 1599492.27
- S.W. Cor., Sec. 12, T27S, R2W - Sedgwick County Aluminum Cap on Surface
13th St. Sta. 100+00.00 0.00' Rt. = 135th St. Sta. 50+00.00 0.00' Rt.
N 1693133.84 E 1602134.37
- S. 1/4 Cor., Sec. 12, T27S, R2W - 3/4" Pipe 0.1' Below Surface
13th St. Sta. 126+44.74 1.12' Rt.
N 1693212.73 E 1604777.98
- S.E. Cor., Sec. 12, T27S, R2W - 3/4" Pipe in Thimble
13th St. Sta. 150+36.13 0.00' Rt.
N 1693553.85 E 1607144.96
- W. 1/4 Cor., Sec. 13, T27S, R2W - Sedgwick County Aluminum Cap 0.3' Below Surface
135th St. Sta. 23+67.11 0.00' Rt.
N 1690501.49 E 1602187.75
- W. 1/4 Cor., Sec. 12, T27S, R2W - 3/4" Pipe 0.2' Below Surface in a Thimble
13th St. Sta. 76+31.28 0.00' Rt.
N 1695764.59 E 1602081.34

PROJECT SURVEY CONTROL

Horiz. Proj. Datum: C.A.F 0.99988239
NAD83 Kansas State Plane
South Zone Coordinates

Vert. Datum: NAVD88

STORMWATER COMPLIANCE

- TOTAL DISTURBED AREA**
- 14.50 ACRES
- PRE-DEVELOPED IMPERVIOUS AREA**
- 3.77 ACRES
- PRE-DEVELOPED PERVIOUS AREA**
- 10.73 ACRES
- POST-REDEVELOPMENT IMPERVIOUS AREA**
- 7.98 ACRES
- POST-REDEVELOPMENT PERVIOUS AREA**
- 6.52 ACRES

GROSS LENGTH OF PROJECT	1.07 mi.
EXCEPTIONS	0.000 mi.
NET LENGTH OF PROJECT	1.07 mi.
NET LENGTH OF BRIDGES	0.000 mi.
NET LENGTH OF ROAD	1.07 mi.

Drawn By: Schwab-Eaton, P.A.
 5/3/2019 1:38 PM
 Plotted:
 File: 15.W01 Title.dwg



CITY OF WICHITA

TITLE SHEET



DESIGNED	MS	DRAWN	JM	SCALE	No Scale	SHEET NO.	1
CHECKED	MS	DATE	09/18				