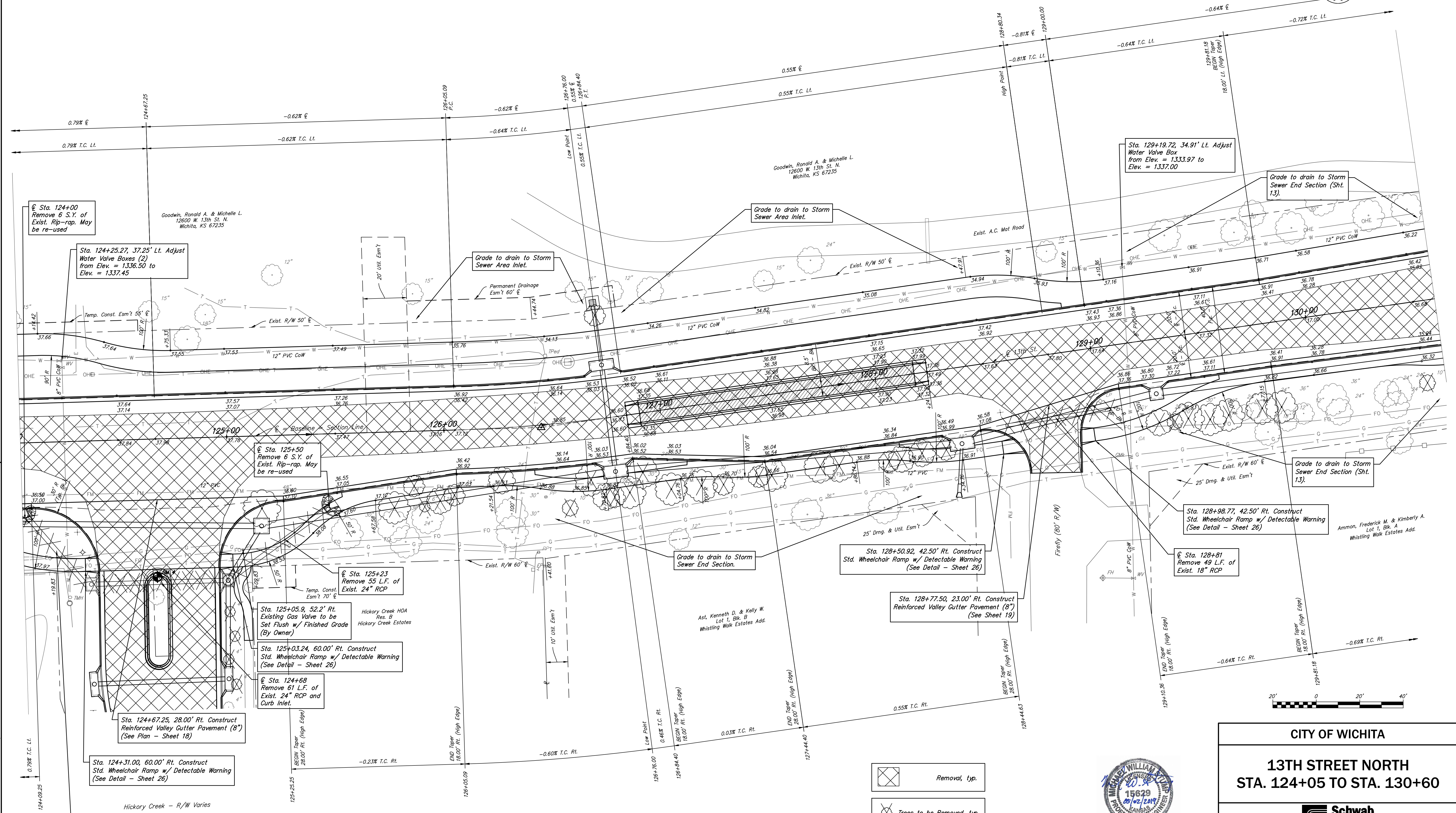
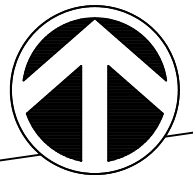


Sta. 126+44.74, 1.12' Rt. = S. 1/4 Cor., Sec. 12, T27S, R2W

- 3/4" Pipe 0.1' Below Surface 31.85' S.
- 3 Nails in East Face of Power Pole 31.74' N.
- 3 Nails in East Face of Power Pole 2.70' E.
- Line of Hedge Row to South 4.50' N.
- Centerline of 13th St. N. in Curve 4.50' N.

Curve Data
 P.C. Sta. 126+05.09
 P.T. Sta. 126+44.74 (Bk.)
 P.T. Sta. 126+84.40
 $\Delta = 06^{\circ}29'29"$ $T = 39.70$
 $R = 700.00'$ $L = 79.31$
 $E = 1.12'$



Drawn By: Schwab-Eaton, P.A.
 5/3/2019 1:40 PM
 Plotted:
 File: 15.W011 Road.dwg

Hickory Creek - R/W Varies
 BM #4 Square Cut N. Nose of Island at Hickory Creek and 13th St. N.
 Sta. 124+66.32, 61.23' Rt. Elev. = 1340.32

- Removal, typ.
- Trees to be Removed, typ.



CITY OF WICHITA

**13TH STREET NORTH
 STA. 124+05 TO STA. 130+60**

Schwab Eaton

DESIGNED	MS	DRAWN	JM	SCALE	1" = 20'-0"	SHEET NO.	12
CHECKED	MS	DATE	09/18				