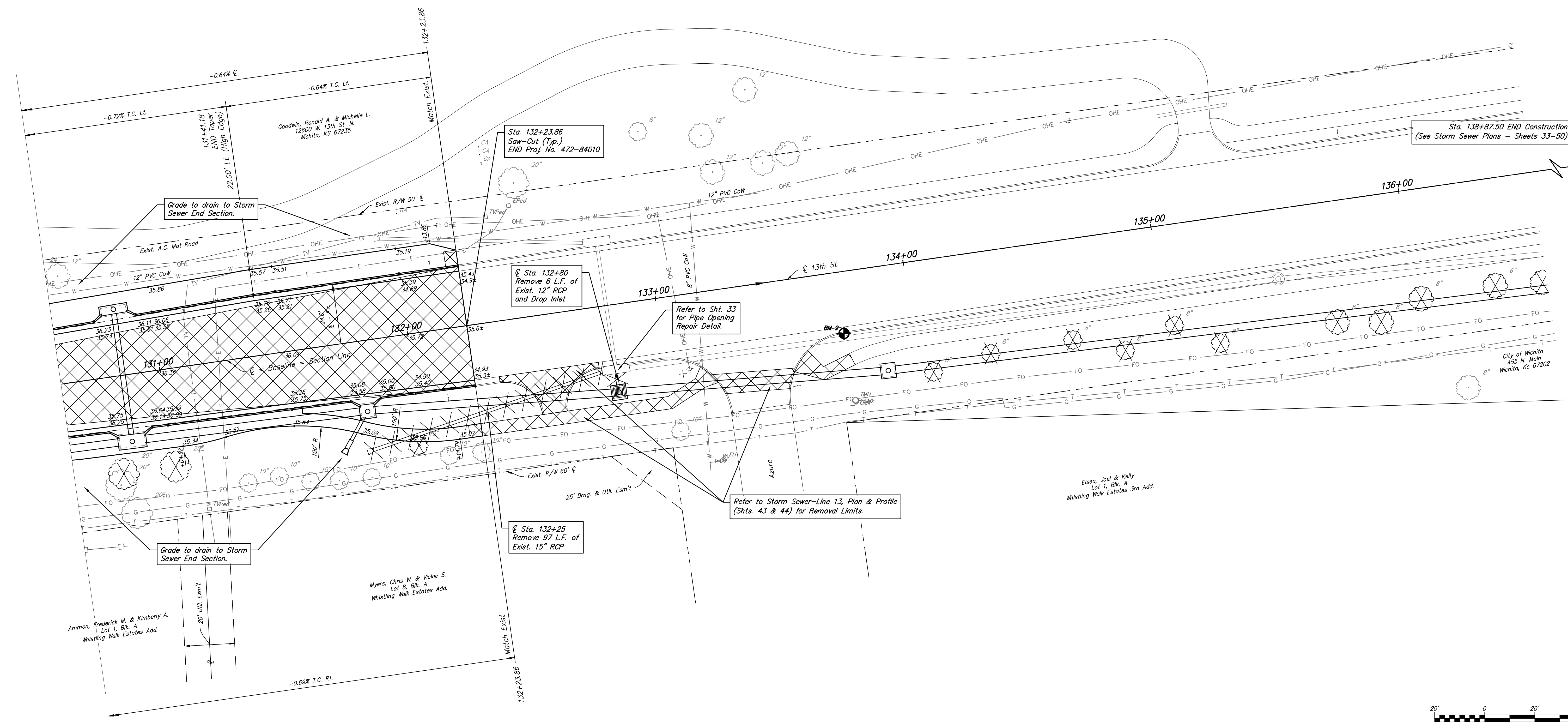
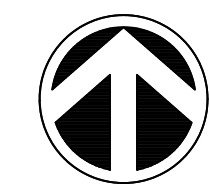
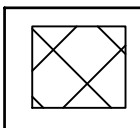



- P.O.T. Sta. 150+36.13 = S.E. Cor., Sec. 12 T27S R2W
- 3/4" Pipe in Thimble
 - 600 Nail and Washer in S. Face Light Pole
 - Nail and Bottle Cap in S.E. Face Power Pole
 - 3 Nails in S.W. Face Light Pole
 - Centerline 119th St. N.
 - Centerline 13th St. W.
- 63.97' N.W.
81.56' N.E.
77.50' S.E.
Inline
Inline



-  Removal, typ.
-  Trees to be Removed, typ.

BM #9 Square Cut E. End of Return at Azure and 13th St. N.
Sta. 133+72.58, 24.59' Rt. Elev.=1335.91



CITY OF WICHITA

**13TH STREET NORTH
STA. 130+60 TO STA. 132+23.86**

**Schwab
Eaton**

DESIGNED	MS	DRAWN	JM	SCALE	SHEET NO.
CHECKED	MS	DATE	09/18	1" = 20'-0"	13

Drawn By: Schwab-Eaton, P.A.
 Plotted: 5/3/2019 1:41 PM
 File: 15.W011 Road.dwg