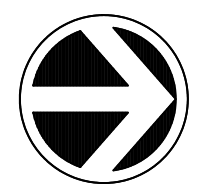
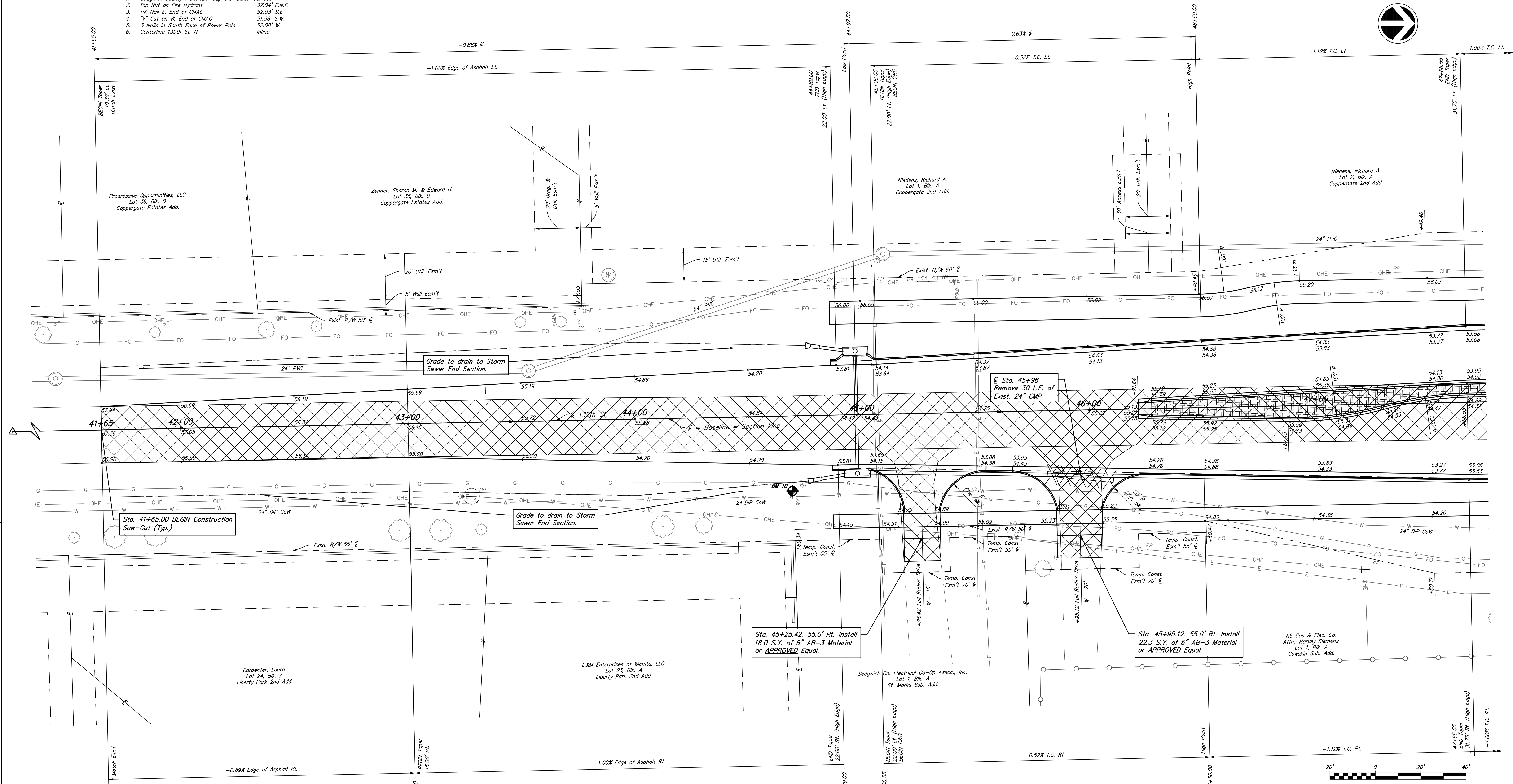


- P.O.T. Sta. 23+67.11 = W. 1/4 Cor., Sec. 13, T27S, R2W
- Sedgwick County Aluminum Cap 0.3' Below Surface
  - Top Nut on Fire Hydrant
  - PK Nail E. End of C/MAC
  - "Y" Cut on W. End of C/MAC
  - 3 Nails in South Face of Power Pole
  - Centerline 135th St. N.

- 37.04' E.N.E.
- 52.03' S.E.
- 51.98' S.W.
- 52.08' W.
- Inline



Drawn By: Schwab-Eaton, P.A.  
 5/3/2019 1:41 PM  
 Plotted:  
 File: 15.W01.Road.dwg

BM #10 "M" in Mueller on top of Fire Hydrant near the Southwest corner of the Westar Substation. Sta. 44+69.47, 33.37' Rt. Elev.=1356.92

- Removal, typ.
- Trees to be Removed, typ.



**CITY OF WICHITA**

**135TH STREET WEST  
 STA. 41+65 TO STA. 47+75**

**Schwab Eaton**

DESIGNED	MS	DRAWN	JM	SCALE	1" = 20'-0"	SHEET NO.	14
CHECKED	MS	DATE	09/18				