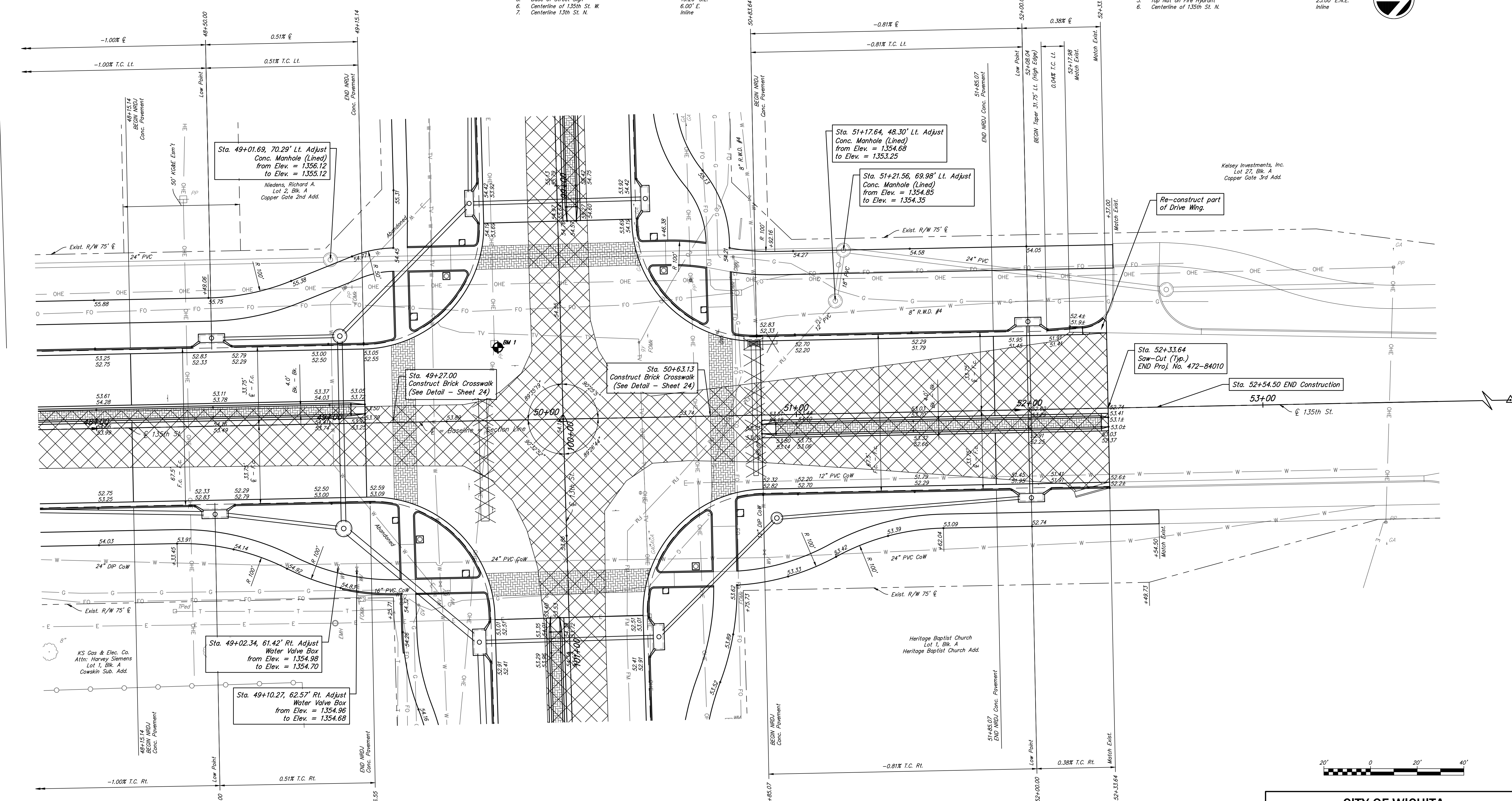


- P.O.T. Sta. 50+00.00 = S.W. Cor., Sec. 12, T27S, R2W
- Sedgwick County Aluminum Cap on Surface
 - "x" on Southeast side of High Line Pole
 - 60D Nail and Shiner in S.W. Face of Guy Pole
 - 3 Nails in Power Pole
 - Base of Street Sign
 - Centerline of 135th St. W.
 - Centerline 13th St. N.

- 43.52' S.W.
- 46.50' N.W.
- 45.70' N.E.
- 49.20' S.E.
- 6.00' E.
- Inline

- P.O.T. Sta. 76+31.28 = W. 1/4 Cor., Sec. 12, T27S, R2W
- 3/4" Pipe in Thimble
 - 3 Grooves cut in N. Rib of Sign
 - May Nail and MKEC Washer in N.E. Face of Power Pole
 - PK Nail and Washer in S. Face of Hedge Tree
 - Top Nut on Fire Hydrant
 - Centerline of 135th St. N.

- 41.20' S.S.E.
- 80.09' S.W.
- 53.05' E.N.E.
- 25.00' E.N.E.
- Inline



Sta. 49+01.69, 70.29' Lt. Adjust
Conc. Manhole (Lined)
from Elev. = 1356.12
to Elev. = 1355.12

Niedens, Richard A.
Lot 2, Blk. A
Copper Gate 2nd Add.

Sta. 51+17.64, 48.30' Lt. Adjust
Conc. Manhole (Lined)
from Elev. = 1354.68
to Elev. = 1353.25

Sta. 51+21.56, 69.98' Lt. Adjust
Conc. Manhole (Lined)
from Elev. = 1354.85
to Elev. = 1354.35

Sta. 52+33.64
Saw-Cut (Typ.)
END Proj. No. 472-84010

Sta. 52+54.50 END Construction

Sta. 49+27.00
Construct Brick Crosswalk
(See Detail - Sheet 24)

Sta. 50+63.13
Construct Brick Crosswalk
(See Detail - Sheet 24)

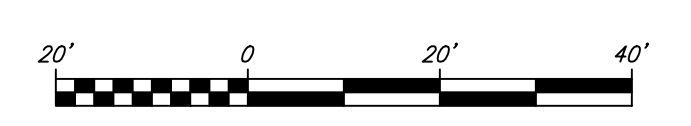
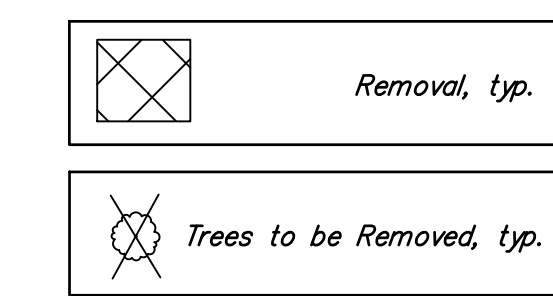
Sta. 49+02.34, 61.42' Rt. Adjust
Water Valve Box
from Elev. = 1354.98
to Elev. = 1354.70

Sta. 49+10.27, 62.57' Rt. Adjust
Water Valve Box
from Elev. = 1354.96
to Elev. = 1354.68

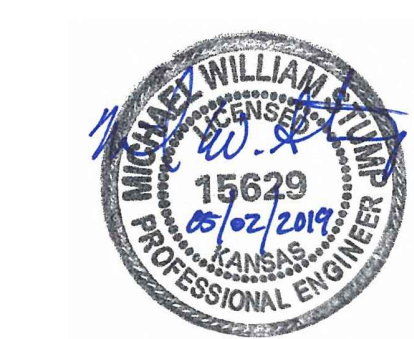
Kelsey Investments, Inc.
Lot 27, Blk. A
Copper Gate 3rd Add.

Heritage Baptist Church
Heritage Baptist Church Add.

BM# 1 City of Wichita Disc on Power Pole
Concrete Pad SW. Quad 13th St. N. and 135th St.
Sta. 49+72.12, 31.77' Rt. Elev.=1356.07



Drawn By: Schwab-Eaton, P.A.
Plotted: 5/3/2019 1:41 PM
File: 15.W01 Road.dwg



CITY OF WICHITA
135TH STREET WEST
STA. 47+75 TO STA. 52+54.50



DESIGNED	MS	DRAWN	JM	SCALE	1" = 20'-0"	SHEET NO.	15
CHECKED	MS	DATE	09/18				