

**GENERAL NOTES**

All traffic control devices and configurations shall conform with these plans and the latest version of the MUTCD. Where conflicts exist, coordinate with City.

As the various construction activities progress, certain situations may arise which will preclude adhering to the original construction sequence or which, in the opinion of the Contractor, would readily adapt themselves to a more efficient staging operation. Should this occur, the Contractor may submit an alternate plan for approval by the City.

See Sh. No. -- for Traffic Control Signing and Details.

See Sh. No. -- for Detour Details.

See Sh. No. -- for Typical Traffic Control for Road Closures.

See details on this sheet for Typical Traffic Control signing.

Access shall be maintained to all adjacent properties throughout construction at locations that have direct access to the workzone, except where noted in these plans.

All items necessary for temporary traffic control, as shown in these plans, shall be paid for as "Traffic Control", Lump Sum, except "AC Pavement (Temporary)" and "Subsidiary" items required to carry traffic as shown in these plans. See detail this sheet.

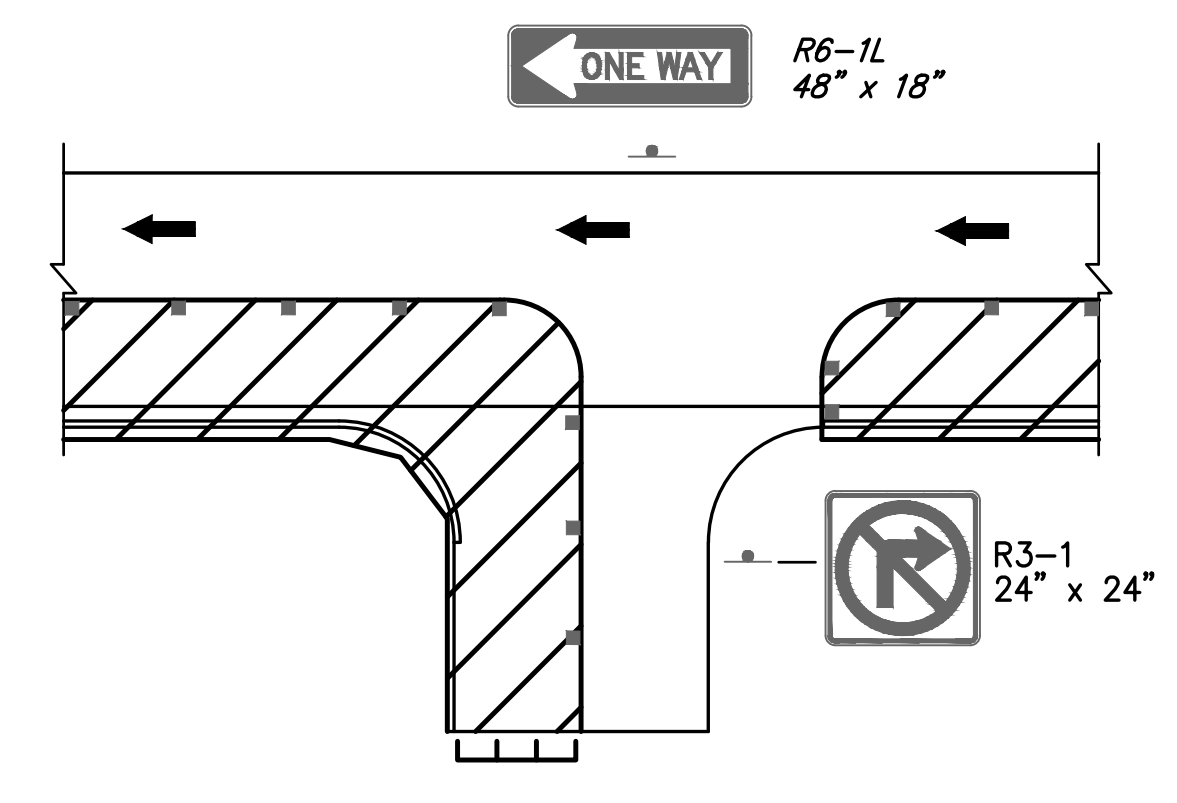
The Contractor shall perform site grading and construct temporary pavement wedges, as necessary to maintain traversable slopes and adequate drainage during construction.

PHASE	TRAFFIC HANDLING	CONSTRUCTION TASKS	REMARKS
1	Construct temporary pavement widening on west side of 135th St. north and south of 13th St. Traffic shall be One-way, North bound on 135th. Move traffic over to north lane of 13th, west of 135th. Traffic shall be east bound on north side of 13th, east of 13th St. on existing pavement. Traffic shall be East bound only during construction of project.	Construct the southeast quadrant of the intersection of 13th St. & 135th St., the south half of 13th St. from Sta. 100+00 to Sta. 132+24, and the east half of 135th St. from Sta. 41+65 to Sta. 50+00, including pavement, curb, sidewalk, and storm sewer.	Construct other minor items as appropriate.
2	Maintain temporary pavement widening on west side of 135th St. north and south of 13th St. Traffic shall be One-way, North bound on 135th. Move traffic over to south lane of 13th, west of 135th. Traffic shall be east bound on new pavement, east of 135th, south side of 13th. Traffic shall be East bound only during construction of project.	Construct the northeast quadrant of the intersection of 13th St. & 135th St., the north half of 13th St. from Sta. 100+00 to Sta. 132+24, and the east half of 135th St. from Sta. 50+00 to Sta. 52+34, including pavement, curb, sidewalk, and storm sewer.	Construct other minor items as appropriate.
3	Construct temporary pavement on east side of 135th, south of 13th, along new asphalt mat section. Traffic shall be Two-way on 135th, on new pavement on the east half of 135th. 13th St. traffic shall remain the same as Phase 2.	Construct the northwest quadrant of the intersection of 13th St. & 135th St., the north half of 13th St. from Sta. 92+15 to Sta. 100+00, and the west half of 135th St. from Sta. 50+00 to Sta. 52+34, including pavement, curb, sidewalk, and storm sewer.	Construct other minor items as appropriate.
4	Maintain temporary pavement on east side of 135th, south of 13th, along new asphalt mat section. Traffic shall be Two-way on 135th, on new pavement on the east half of 135th. Move traffic over to north lane of 13th, west of 135th. Traffic shall be east bound on new pavement, west and east of 135th, north side of 13th. Traffic shall be East bound only during construction of project.	Construct the southwest quadrant of the intersection of 13th St. & 135th St., the south half of 13th St. from Sta. 92+15 to Sta. 100+00, and the west half of 135th St. from Sta. 50+00 to Sta. 52+34, including pavement, curb, sidewalk, and storm sewer.	Construct other minor items as appropriate.
5	Maintain traffic pattern as detailed in Phase 4. All side roads and entrances shall remain open. Short-term closures and temporary traffic control may be used, as required.	Construct all remaining items and remove all temporary pavement.	Construct other minor items as appropriate and clean up.



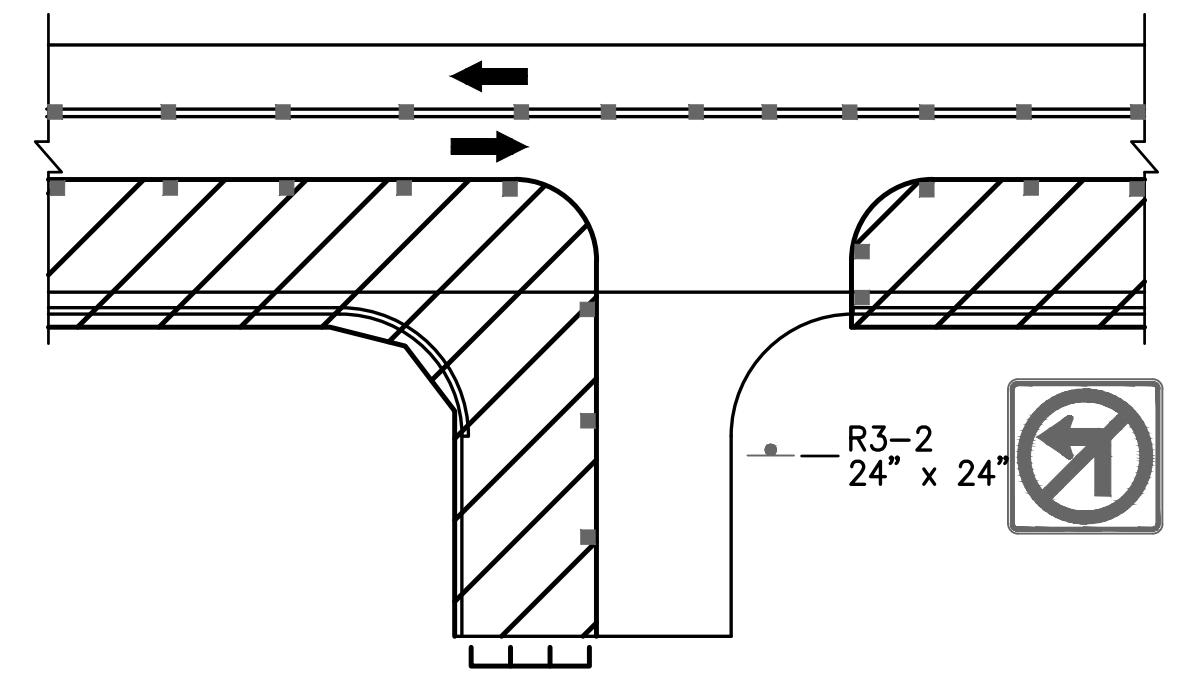
**LEGEND**

- Channelizing Device
- ➔ Traffic Flow
- ▨ Work Zone
- ▧ Temporary Pavement AC Pavement, Temporary 6" (5" Base)
- ▩ Type III Barricades w/Lights (Complete Closure)
- ▩ Type III Barricades (Staggered position)
- ⚡ Sign
- Type "A" Low Intensity Warning Light



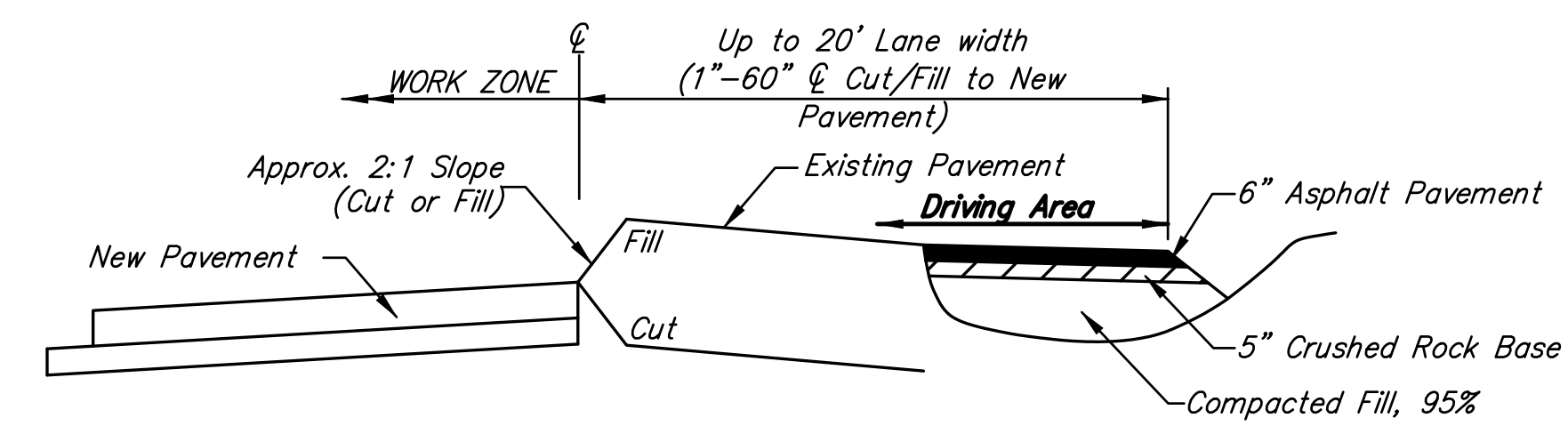
**TYPICAL DRIVEWAY/ENTRANCE CONSTRUCTION**

ONE-WAY TRAFFIC ON MAIN ROAD  
Maintain access to homes and businesses at all times. If a property has multiple entrances, one entrance at a time may be closed for construction. Otherwise, construct entrance in halves.

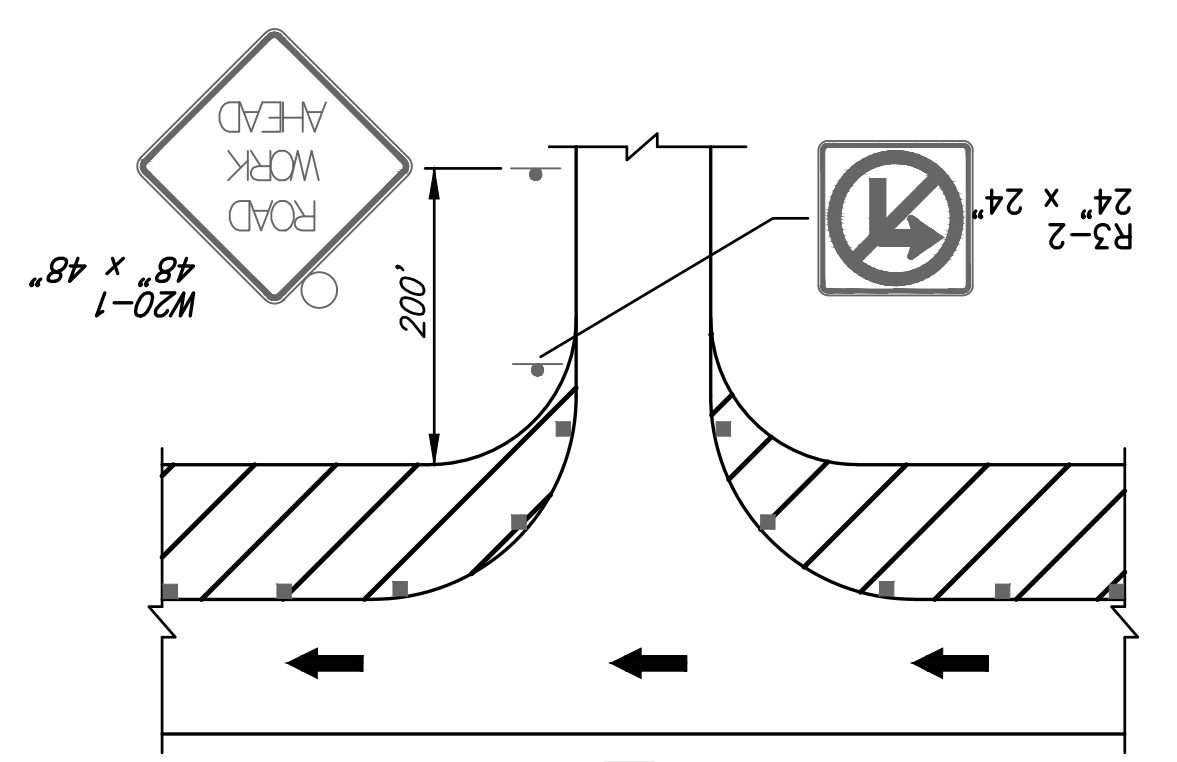


**TYPICAL DRIVEWAY/ENTRANCE CONSTRUCTION**

TWO-WAY TRAFFIC ON MAIN ROAD  
Maintain access to homes and businesses at all times. If a property has multiple entrances, one entrance at a time may be closed for construction. Otherwise, construct entrance in halves.

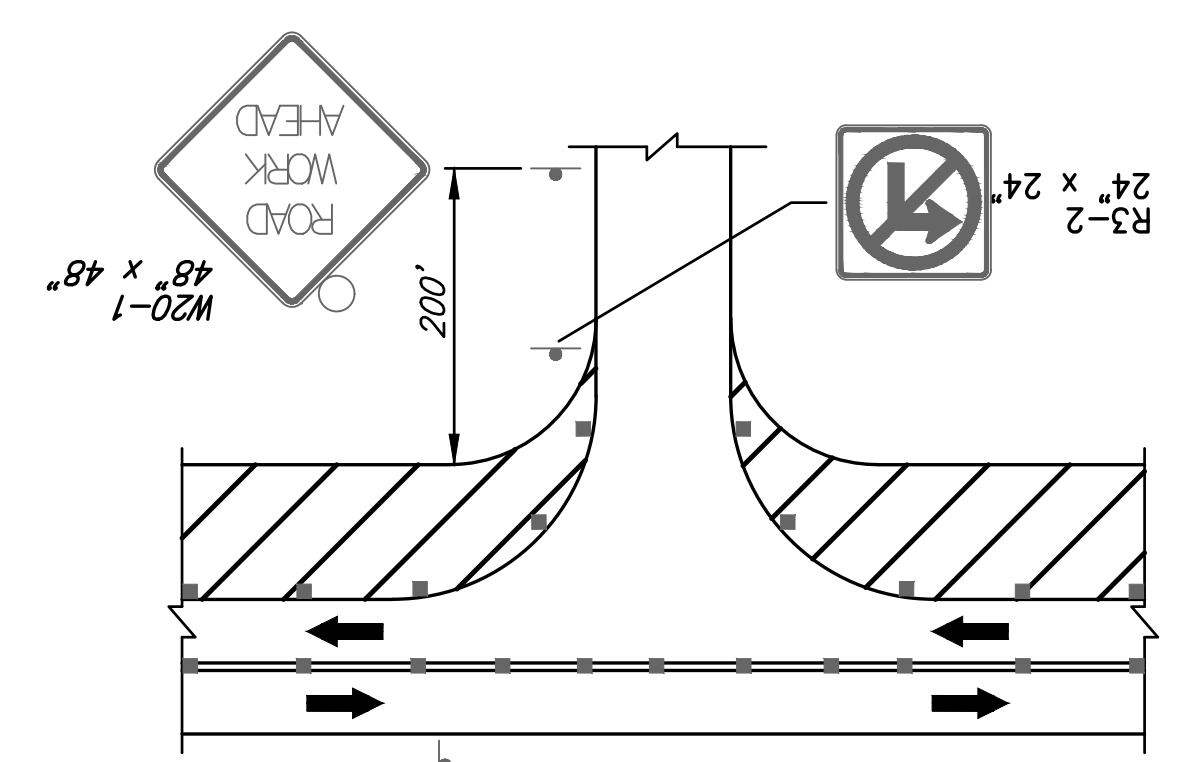


**TEMPORARY PAVEMENT WIDENING DETAIL**  
Temporary asphalt pavement shall be placed to maintain a 10 foot minimum lane width in all locations. No Geogrid reinforcement is required. All earthwork, crushed rock base, and asphalt pavement shall be Subsidiary to the bid item "AC Pavement, Temporary."



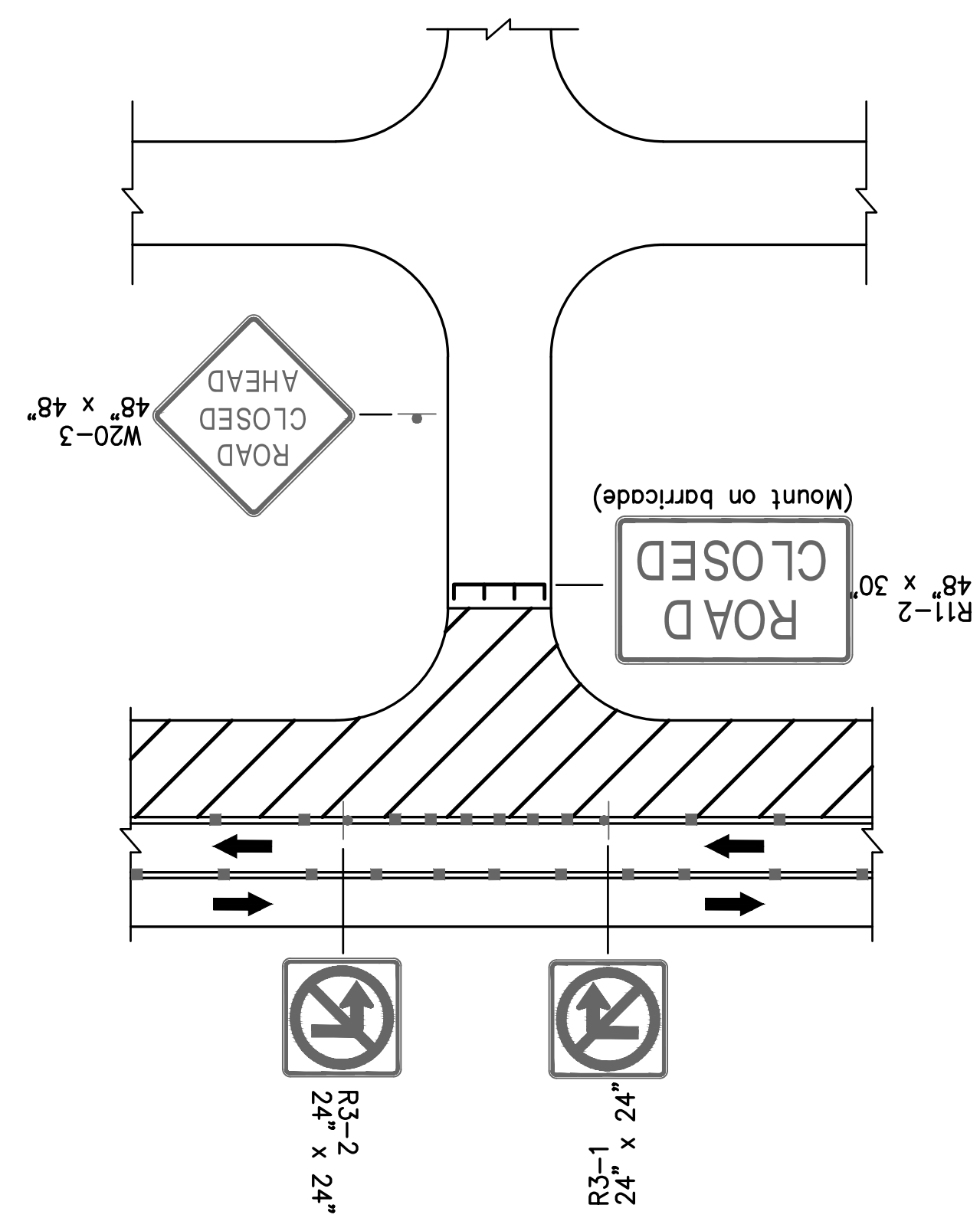
**TYPICAL ENTRANCE & SIDE ROAD OPEN**

ONE-WAY TRAFFIC ON MAIN ROAD

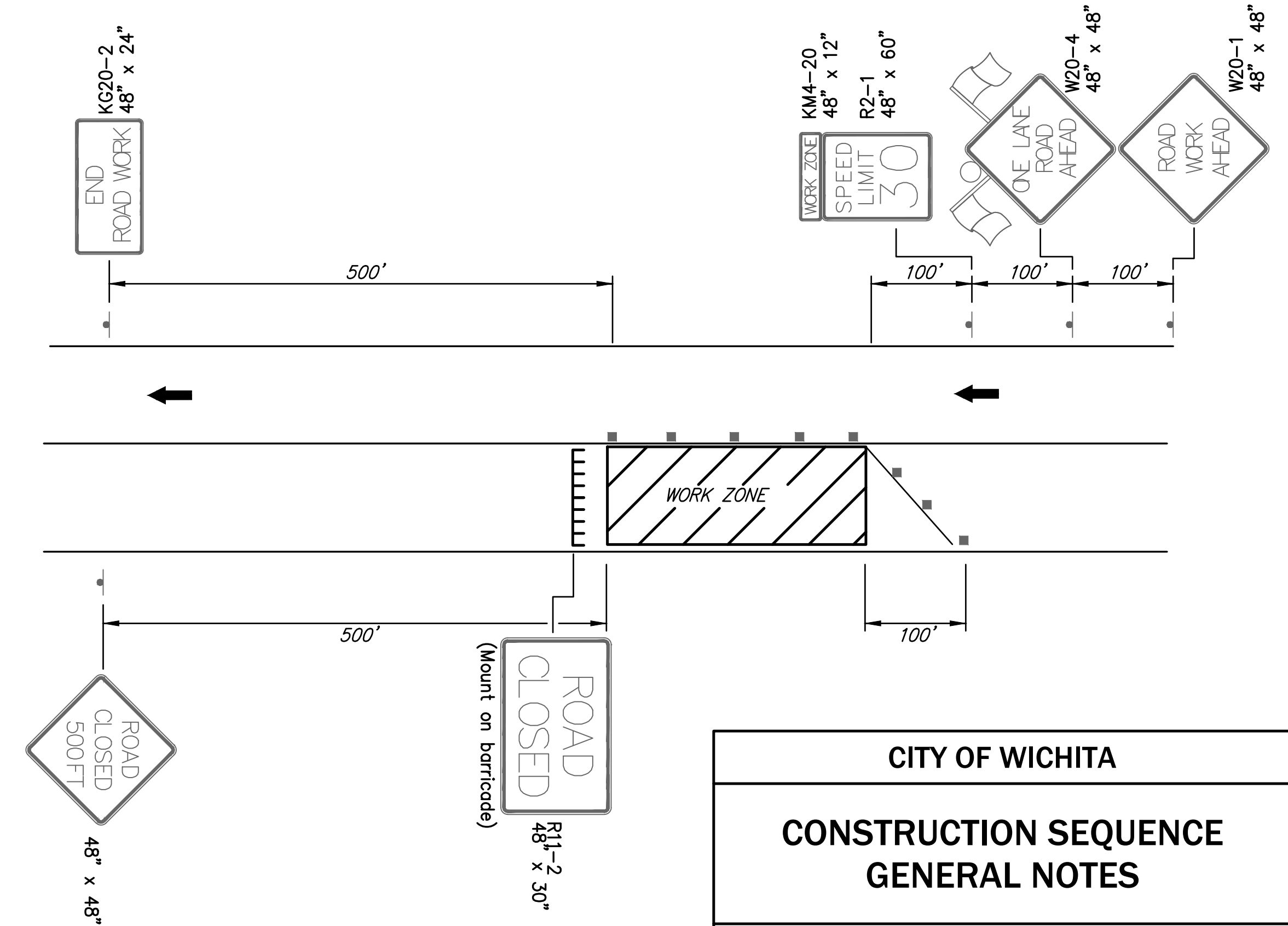


**TYPICAL ENTRANCE & SIDE ROAD OPEN**

TWO-WAY TRAFFIC ON MAIN ROAD



**TYPICAL SIDE ROAD CLOSED**



**TYPICAL TRAFFIC CONTROL**

One direction of travel through workzone.  
Not to Scale

Drawn By: Schwab-Eaton, P.A.  
 Plotted: 5/3/2019 1:59 PM  
 File: 15.W01 Construction Sequence.dwg

**CITY OF WICHITA**

**CONSTRUCTION SEQUENCE  
GENERAL NOTES**

**Schwab Eaton**

DESIGNED MS	DRAWN MS	SCALE 1" = 50'-0"	SHEET NO. 81
CHECKED MS	DATE 09/18		