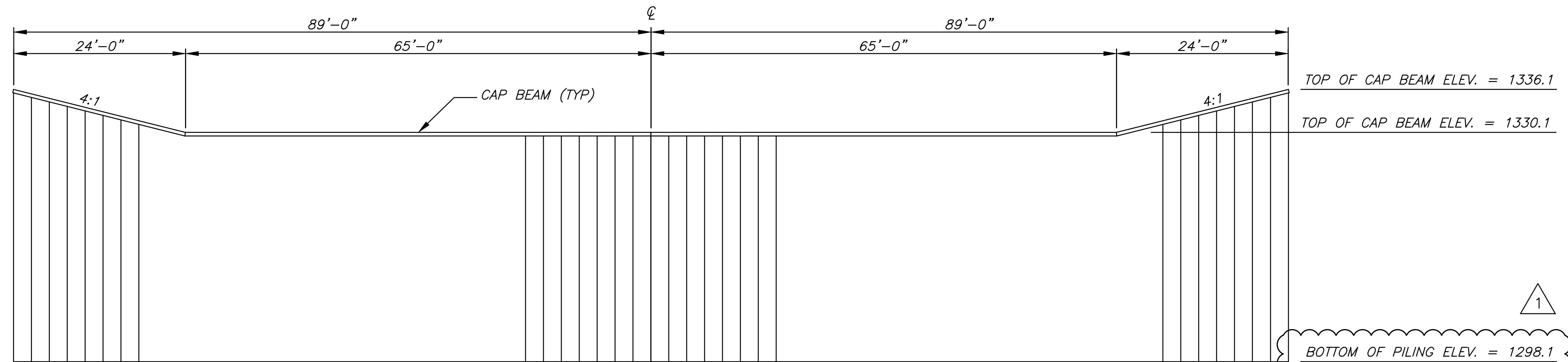
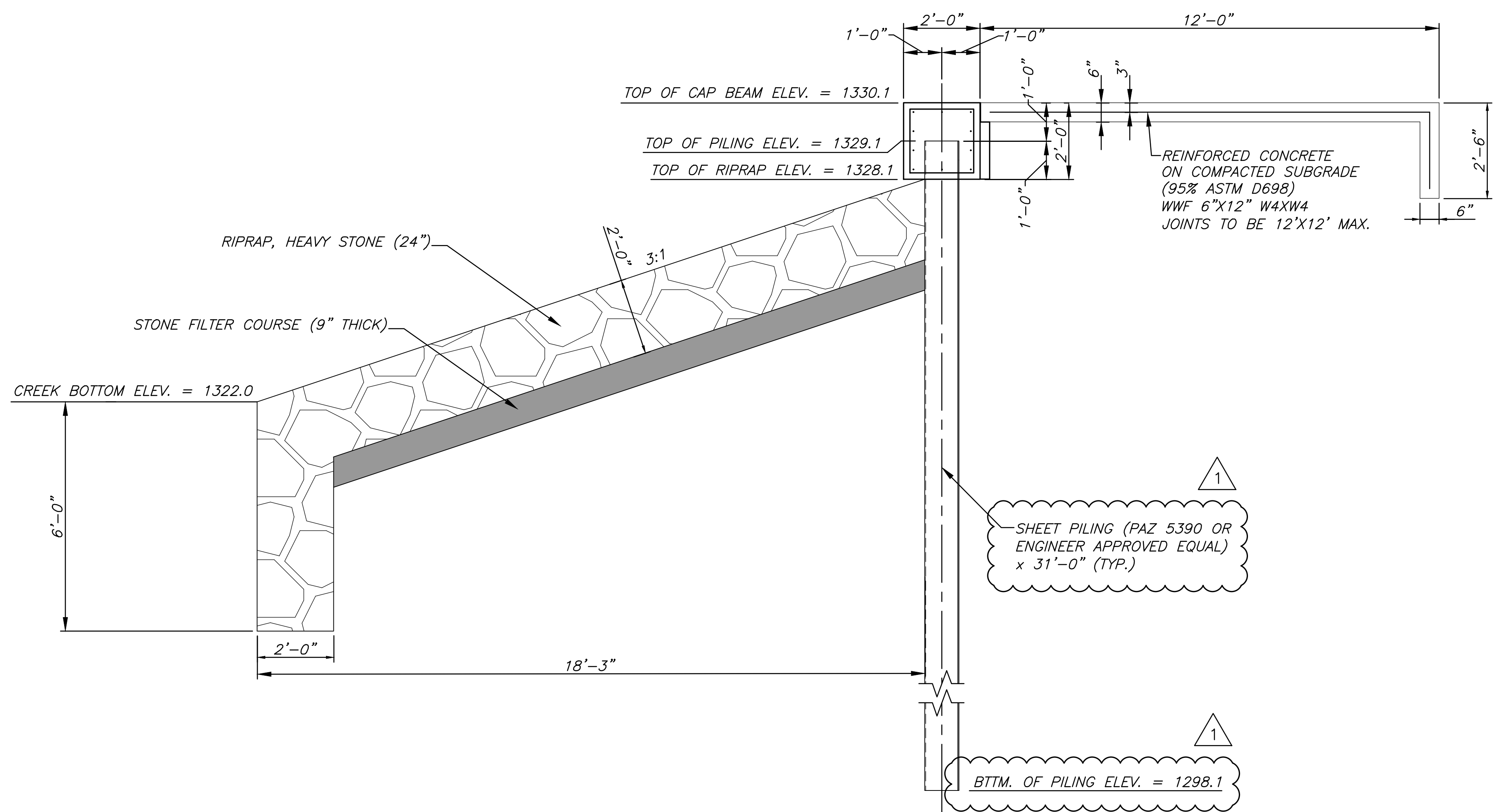


PLOTTED: Wednesday, December 11, 2019 @ 01:18PM

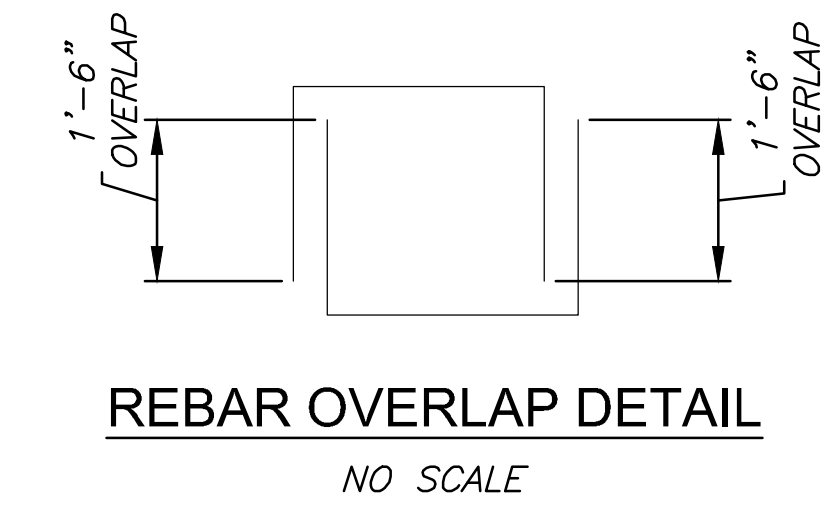
J:\PROJECTS\2019\1501010491_COW 13TH STREET AT COWSKIN_150491 CAD\SHOTS\05 CIVIL\SW\15491\DD01.DWG



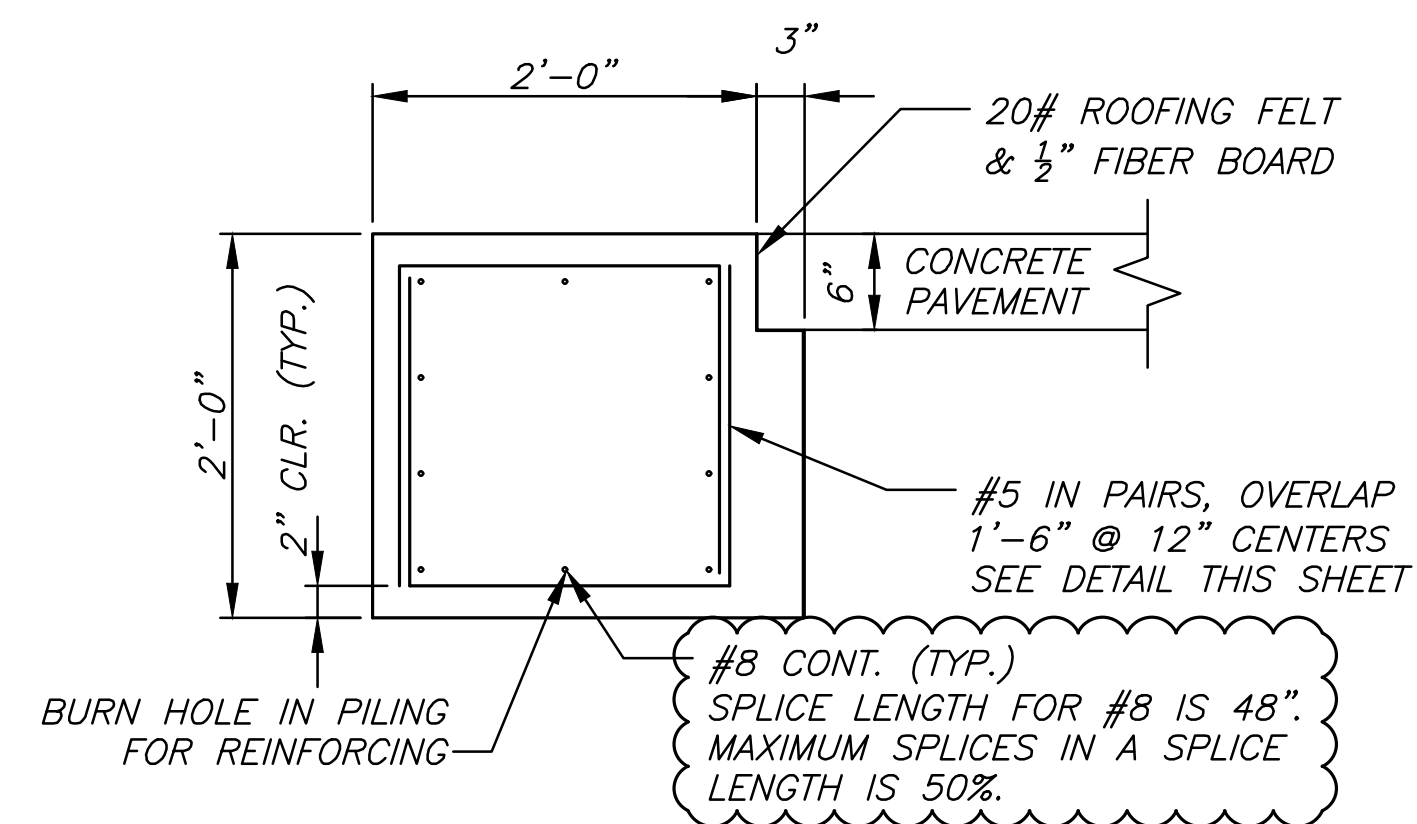
END WALL ELEVATION
SCALE: 1" = 10'



PILE SECTION
NO SCALE



REBAR OVERLAP DETAIL
NO SCALE



CAP BEAM DETAIL
NO SCALE

CONCRETE: $f_c' = 4\text{KSI}$, PER ACI 318
CITY OF WICHITA PAVING MIX

REINF: $f_y = 60\text{KSI}$
ASTM A615 GRADE 60



STORM WATER SEWER PLAN FOR
COWSKIN CREEK AT 13TH ST. N.
WICHITA, KANSAS

©2019 MKEC Engineering All Rights Reserved
www.mkec.com
These drawings and their contents, including, but not limited to, all concepts, designs, & ideas are the exclusive property of MKEC Engineering (MKEC), and may not be used or reproduced in any way without the express consent of MKEC.

WEIR DETAILS

PROJECT NO.	468-85055	
DATE	OCT. 2016	
SCALE	AS SHOWN	
DESIGNED	DRAWN	CHECKED
KJS	DMU	BLB
NO.	REVISION	DATE
1	REVISED PER SCOUR	01/17/19
0	ISSUED FOR CONST.	10/10/16

SHEET NO.