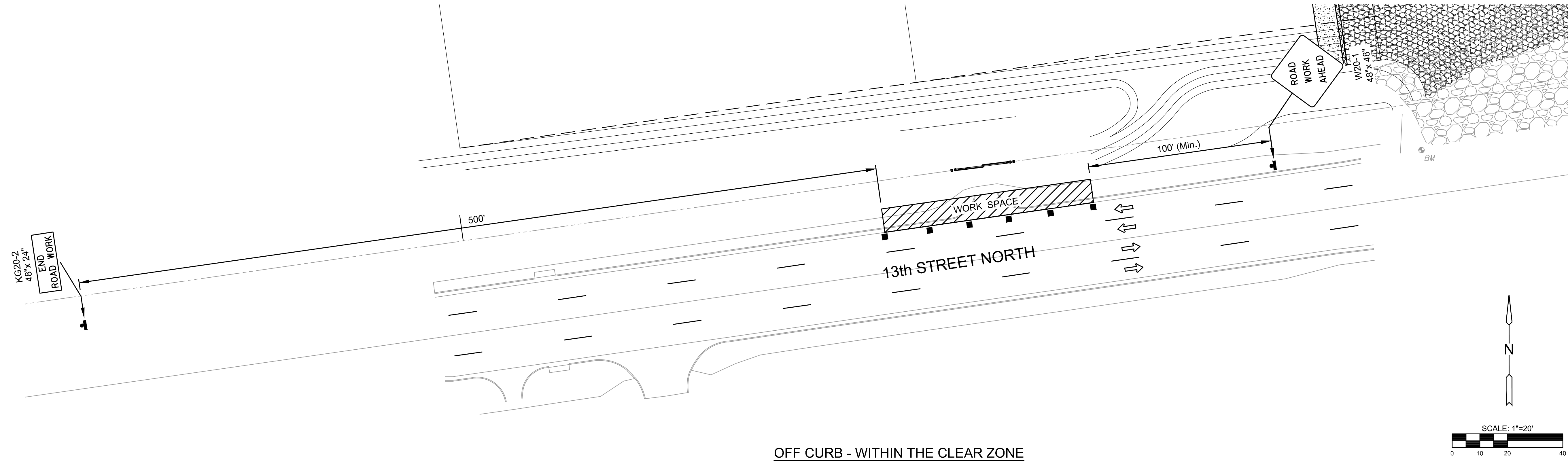
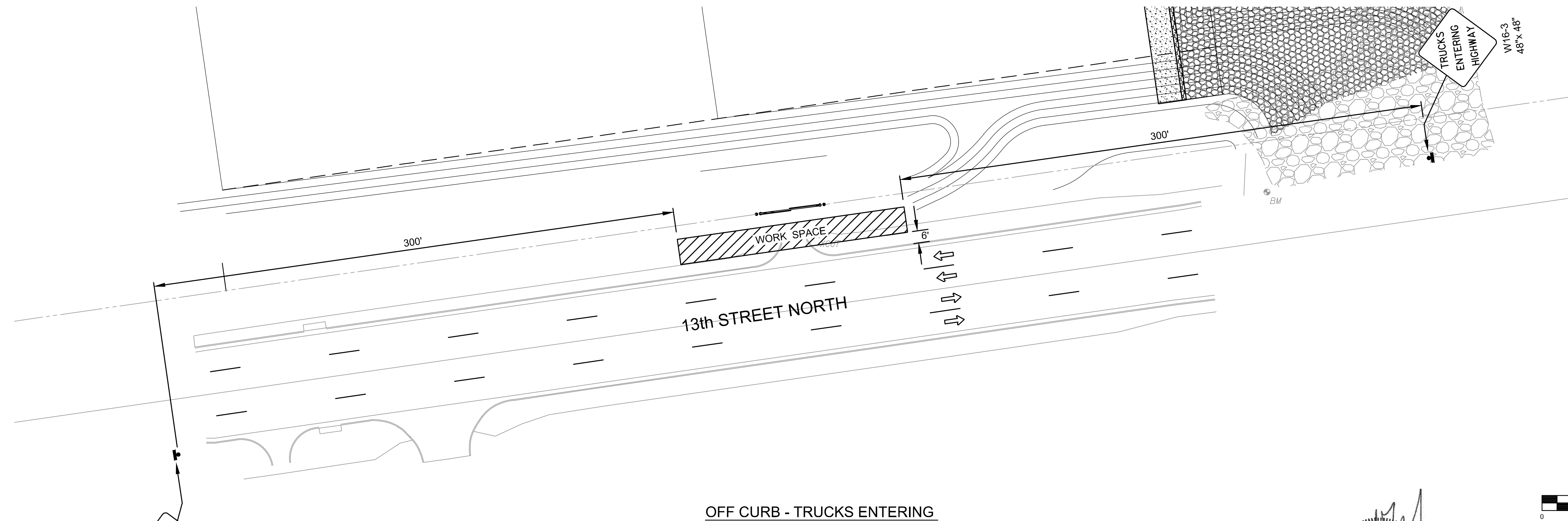


PLOTTED: Wednesday, December 11, 2016 @ 01:21PM

J:\PROJECTS\2016\1501010491\_COW 13TH STREET AT COWSKIN\_150491\_CAD\SHOTS\05\_CIVIL\TRAFFIC\150491TR01.DWG



OFF CURB - WITHIN THE CLEAR ZONE

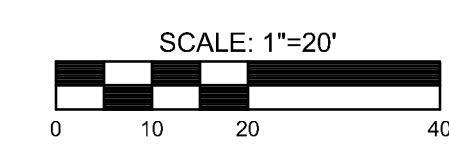


OFF CURB - TRUCKS ENTERING

**NOTE:**

NO TRAFFIC CONTROL IS REQUIRED IF THE WORK SPACE IS LOCATED OUTSIDE OF THE CLEAR ZONE.

FOR OPERATIONS OF 60 MINUTES OR LESS, ALL SIGNS AND CHANNELIZING DEVICES MAY BE ELIMINATED IF A VEHICLE WITH HIGH-INTENSITY ROTATING, FLASHING, OSCILLATING, OR STROBE LIGHTS IS USED.



**LEGEND**

|  |                     |
|--|---------------------|
|  | Channelizing Device |
|  | Sign                |
|  | Traffic Flow        |
|  | Work Space          |



STORM WATER SEWER PLAN FOR  
**COWSKIN CREEK AT 13TH ST. N.**  
 WICHITA, KANSAS

©2016 MKEC Engineering All Rights Reserved www.mkec.com  
 These drawings and their contents, including, but not limited to, all concepts, designs, & ideas are the exclusive property of MKEC Engineering (MKEC), and may not be used or reproduced in any way without the express consent of MKEC.

**TRAFFIC CONTROL PLAN**

|                       |           |         |
|-----------------------|-----------|---------|
| PROJECT NO.           | 468-85055 |         |
| DATE                  | OCT. 2016 |         |
| SCALE                 | AS SHOWN  |         |
| DESIGNED              | DRAWN     | CHECKED |
| JRA                   | LES       | BLB     |
| ISSUED FOR CONST. NO. | 10/10/16  | DATE    |
| SHEET NO.             | 07 OF 17  |         |