

GENERAL NOTES:

- The Contractor shall comply with all applicable safety regulations. All construction shall be completed following current City Standard Specifications and Special Provisions.
- Contractor will be required to provide notice to utility companies a minimum of seventy-two (72) hours prior to any excavation, as follows:

Kansas One-Call 687-2470

The Contractor must notify the following in case of an emergency:

AT&T 1-800-246-8464
 Black Hills Energy 1-800-694-8989
 City of Wichita Water & Sewer 1-316-219-8921
 City of Wichita Stormwater 1-316-268-4090
 City of Wichita Traffic 1-316-268-4034
 Cox Communications 1-888-249-3530
 Kansas Gas Service 1-888-482-4950
 Westar Energy 1-800-544-4857

- Utility service lines, poles, etc. are to be adjusted as necessary by others prior to construction unless the plans specifically call for their adjustment by the Contractor or unless the plans specifically identify a utility to be adjusted by its owner during construction. Existing utilities and their location, as shown on the plans, represent the best information obtainable for design. The Contractor will be required to work around existing utilities within the right-of-way which do not conflict with proposed construction.

- Rubble from the removal of miscellaneous structures and excess excavation which is to be wasted shall be disposed of on sites to be provided by the Contractor. These sites shall be approved by the Engineer as to suitability, appearance and site location. Locations, in the opinion of the Engineer, that will leave an unsightly appearance will not be approved. All disposal sites must be approved by the Kansas Department of Health and Environment. Material either stockpiled or disposed of in a flood plain will require a Kansas State Board of Agriculture permit. Any material dumped in waters of the United States or wetlands is subject to U.S. Corps. of Engineers permitting regulations. Any material buried or stockpiled beyond approved construction limits will require additional archaeological investigations unless buried in a previously approved borrow location.

- Trees and shrubs in public right-of-way which are in direct conflict with proposed new construction shall be removed by the Contractor with the City Engineer's approval. Trees and shrubs which are not in direct conflict with proposed new construction shall be saved and protected from damage.

- The Contractor shall give all property owners and/or tenants of developed property abutting the construction of this project a minimum of ten (10) days notice prior to start of construction.

- The Contractor shall be responsible for preserving property irons. The Contractor will be required to re-establish any property irons which are damaged or destroyed by his construction operations. Such irons shall be re-established by a licensed land surveyor in accordance with state laws.

- All elevations shown are City Datum.

- All areas disturbed during construction that will not be under proposed pavement shall be restored to match existing conditions.

- All stubs and capped pipes shall be located with green plastic tape in the same manner as risers.

- Connecting to Existing Manholes: Prior to laying sewer lines using existing stubs in existing manholes, the Contractor shall expose and verify the elevation, grade and alignment of existing stubs and notify the Engineer of any deviation from the plans. Where the stub is unusable due to elevation grade or alignment, the Contractor shall remove the stub and plug the hole, and reshape the existing manhole invert to provide smooth flow. Where connection to an existing manhole that does not have an existing stub, the Contractor shall core cut into existing manhole wall to make connection using approved water stop gasket, and reshape the existing manhole invert to provide smooth flow.

- Contractor shall limit the extent of trench open overnight and weekends to less than 50 feet.

- Contractor shall provide positive drainage away from all manhole covers.

- The Contractor shall prevent any construction debris from entering the existing sanitary sewer during construction.

- The Contractor shall protect from damage and support existing utilities through construction as approved by the utility owner and the Engineer at the contractor's expense.

- Contractor shall grade around exposed manholes at a 1:1 slope. Manholes set lower than existing grade shall have a 9" berm constructed around manhole to prevent infiltration into sanitary sewer system. Cost of dirt, labor, equipment, etc. to be incidental to cost of manhole. Easements shall be graded with the street improvement project as part of the mass grading plan.

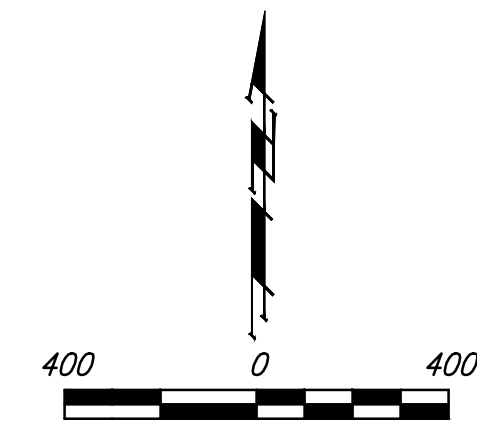
- All disturbed areas are to be seeded as follows:

Seed -- Rye grass; 5 lbs./1000 Sq. Ft.

All costs associated with seeding including mobilization, preparation of ground, seeding, fertilizing, mulching, etc. shall be included in the L.S. bid item "Seeding".

- All existing and proposed erosion control measures including silt fencing, erosion control mat, straw bales, inlet barriers, and const. entrance shall be maintained throughout construction by the contractor and until project is accepted by the City of Wichita. The on-site engineer shall complete weekly reports on the status of erosion control measures. The contractor shall be required to comply with maintenance and/or replacement of erosion control measures as determined by the on-site engineer until project is accepted by City of Wichita. Maintenance and/or replacement of erosion control measures to be paid by L.S. bid item "Maintain Existing BMPs".

- The developer for this project is Chris Stevens, (316) 928-4051.

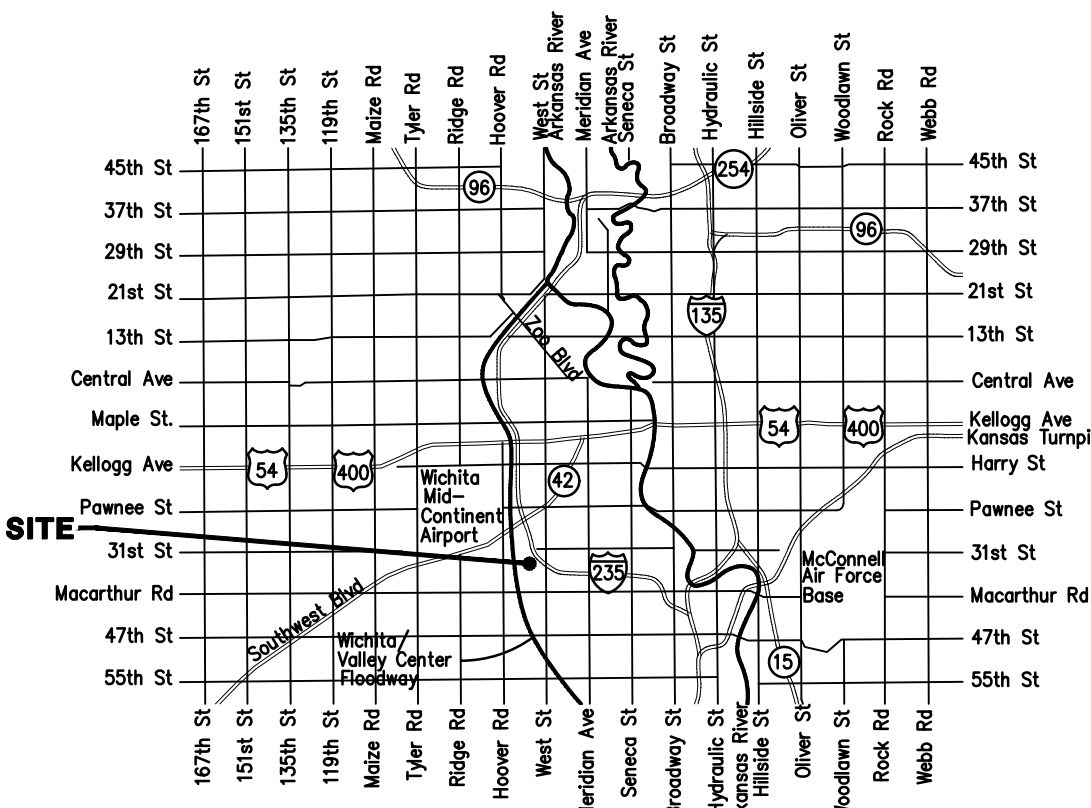


Benchmarks

BM #1: "□" on top of SW curb Bolin Drive, SE corner of Lot 40, Block D, Blue Lake Addition Elev. = 102.10 (City Datum)

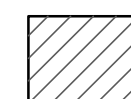
BM #2: "□" on top of east curb of bulb of Sabin Ct., SW corner of Lot 58, Block D, Blue Lake Addition Elev. = 105.61 (City Datum)

BM #3: "□" on top of south curb of bulb of Sabin Ct., NW corner of Lot 51, Block D, Blue Lake Addition Elev. = 102.30 (City Datum)



Vicinity Map

Benefit District



SANITARY SEWER IMPROVEMENTS to serve BLUE LAKE ADDITION

CITY OF WICHITA, KANSAS

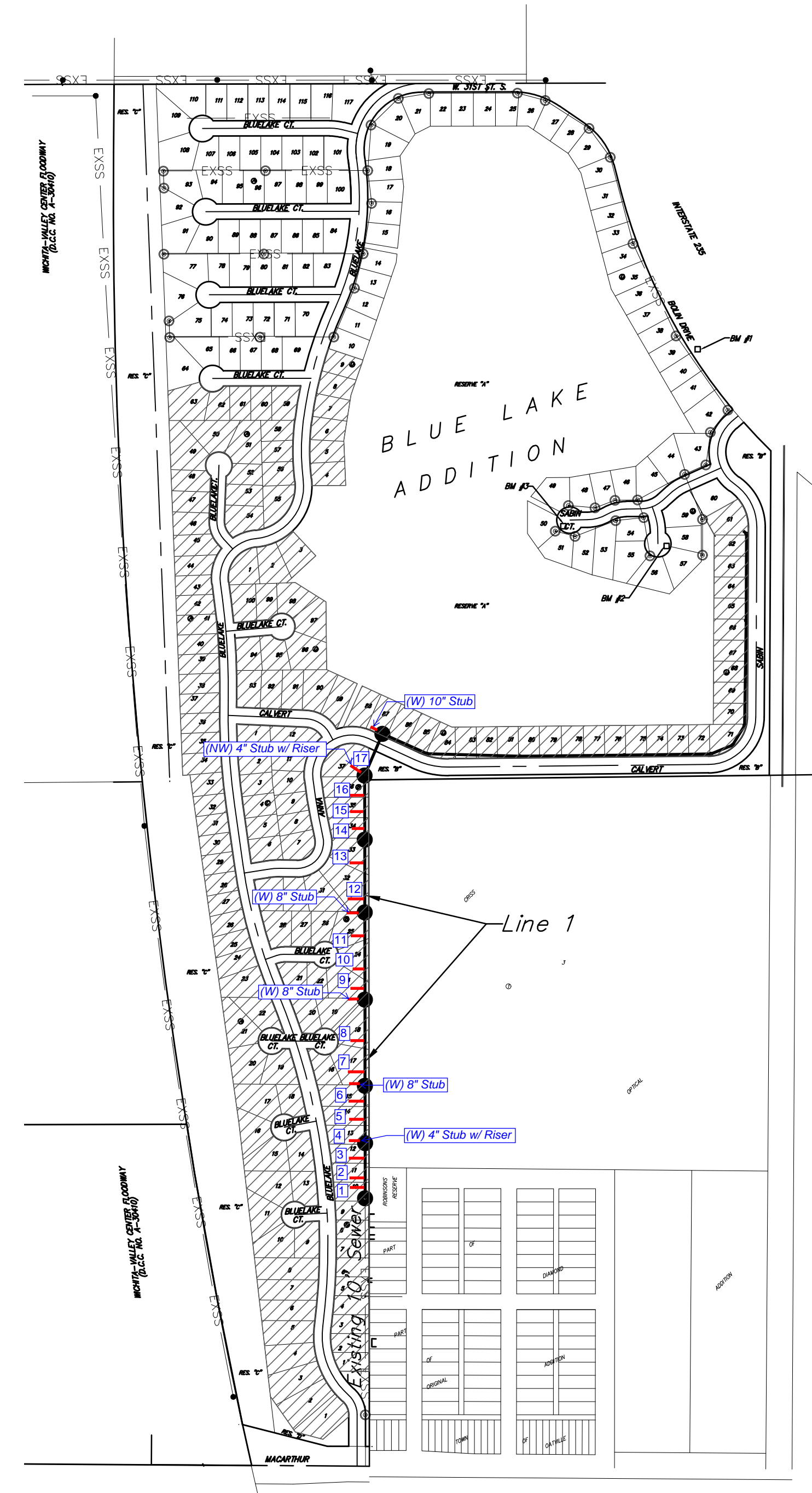
Gary Janzen, P.E. City Engineer

Project Number

468-83863

O.C.A. Number

744500



Duling Construction - Contractor
 B. Woods - City of Wichita, Field Project Engineer
 S. Stripling - City of Wichita, Inspector
 As-built
 Stubs & Risers
 Completion Date: 4/1/2020
 pdf: apr 4/8/2020

Sheet Index

Title Sheet	1
Precast SS Manhole Detail	2
Manhole Frame & Cover Detail	3
Vertical Riser Detail	4
Line 1	5-6
Erosion Control Plan	7
Erosion Control BMP Details	8-12
Coordinate Sheet	13
Copy of Plat	14-15



May 2019



Baughman Company, P.A. 315 Ellis St. Wichita, KS 67211 P 316-262-7271 F 316-262-0149
 ENGINEERING | SURVEYING | PLANNING | LANDSCAPE ARCHITECTURE

E:\Projects\Blue Lake\Engineering\Phase 2A\SS Main\SS Main.dwg

BENCHMARKS:
 BM #1: "□" on top of SW curb of Bolin Drive, SE corner of Lot 40, Block D, Blue Lake Addition. Elev. = 102.10 (City Datum)

BM #2: "□" on top of east curb of bulb of Sabin Ct., SW corner of Lot 58, Block D, Blue Lake Addition. Elev. = 105.61 (City Datum)

BM #3: "□" on top of curb of bulb of Sabin Ct., SW corner of Lot 51, Block D, Blue Lake Addition. Elev. = 102.30 (City Datum)

Riser #3, Lot 12, Blk B
 Distance from Main to Riser = 5' Lt.
 Distance from USMH = 67'
 Distance from DSMH = 143'

Riser #6, Lot 15, Blk B
 Distance from Main to Riser = 5' Lt.
 Distance from USMH = 69'
 Distance from DSMH = 149'

Riser #5, Lot 14, Blk B
 Distance from Main to Riser = 5' Lt.
 Distance from USMH = 141'
 Distance from DSMH = 77'

Riser #7, Lot 17, Blk B
 Distance from Main to Riser = 5' Lt.
 Distance from USMH = 315'
 Distance from DSMH = 13'

Riser #8, Lot 18, Blk B
 Distance from Main to Riser = 5' Lt.
 Distance from USMH = 177'
 Distance from DSMH = 151'

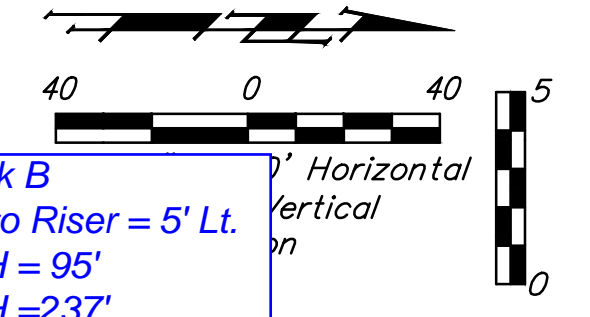
Riser #9, Lot 23, Blk B
 Distance from Main to Riser = 5' Lt.
 Distance from USMH = 317'
 Distance from DSMH = 15'

Riser #10, Lot 24, Blk B
 Distance from Main to Riser = 5' Lt.
 Distance from USMH = 235'
 Distance from DSMH = 97'

Riser #11, Lot 25, Blk B
 Distance from Main to Riser = 5' Lt.
 Distance from USMH = 95'
 Distance from DSMH = 237'

Trees in conflict with sanitary sewer construction to be removed by contractor. To be paid for as lump sum bid item "Site Clearing"

All other trees shall remain and be protected from damage during construction. Overhanging limbs shall be trimmed by the Contractor using a chain saw only as necessary for construction and with approval of the Engineer. No trees are to be removed.



Riser #1, Lot 10, Blk B
 Distance from Main to Riser = 5' Lt.
 Distance from USMH = 200'
 Distance from DSMH = 9'

Riser #2, Lot 11, Blk B
 Distance from Main to Riser = 5' Lt.
 Distance from USMH = 139'
 Distance from DSMH = 71'

Riser #4, Lot 13, Blk B
 Distance from Main to Riser = 5' Lt.
 Distance from USMH = @ MH
 Distance from DSMH = @ MH

Sta. 0+00.0, Begin Line 1
 Remove existing 8" stub.
 Core into existing manhole and extend 10" pipe north. Seal and grout around pipe. Reshape invert if necessary.
 Top Elev. = 100.51
 N=26,319.22 E=32,594.92

Sta. 2+09.6, Line 1
 Construct MH, Standard (4').
 1 - Riser Assembly 4", Manhole Stub (W)
 Top Elev. = 101.90
 N=26,528.83 E=32,594.66

Sta. 4+27.6, Line 1
 Construct MH, Standard (4').
 1 - Pipe Stub, 8" (W)
 Top Elev. = 102.20
 N=26,746.84 E=32,594.40

Sta. 7+55.6, Line 1
 Construct MH, Standard (4').
 1 - Pipe Stub, 8" (W)
 Top Elev. = 101.80
 N=27,074.85 E=32,594.00

Sta. 10+87.6, Line 1
 Construct MH, Standard (4').
 1 - Pipe Stub, 8" (W)
 Top Elev. = 103.70
 Match Point
 N=27,406.86 E=32,593.59

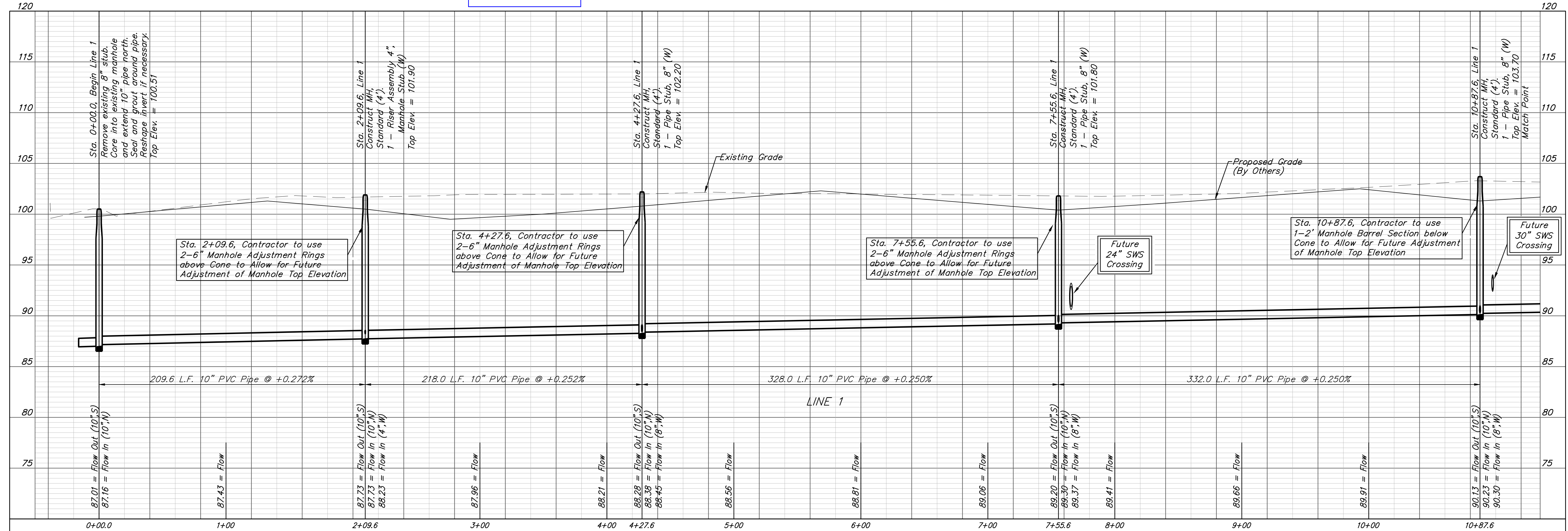
NUMBER	TYPE	LOCATION			FOR INFORMATION ONLY		
		LOT NO.	BLOCK NO.	LINE NO.	STATION\ DIRECTION	APPROXIMATE LENGTH 4" PIPE VERTICAL	HORIZONTAL
1	8" X 4" Tee W/Riser	10	B	1	0+10.0/Lt.	9.0'	5.0'
2	8" X 4" Tee W/Riser	11	B	1	0+70.6/Lt.	9.5'	5.0'
3	8" X 4" Tee W/Riser	12	B	1	1+42.6/Lt.	10.0'	5.0'
4	4" Stub W/Riser	13	B	1	2+09.6/Lt.	9.0'	5.0'
5	8" X 4" Tee W/Riser	14	B	1	2+86.6/Lt.	8.0'	5.0'
6	8" X 4" Tee W/Riser	15	B	1	3+58.6/Lt.	8.0'	5.0'
7	8" X 4" Tee W/Riser	17	B	1	4+40.6/Lt.	8.5'	5.0'
8	8" X 4" Tee W/Riser	18	B	1	5+78.5/Lt.	9.5'	5.0'
9	8" X 4" Tee W/Riser	23	B	1	7+70.7/Lt.	7.5'	5.0'
10	8" X 4" Tee W/Riser	24	B	1	8+52.9/Lt.	8.0'	5.0'
11	8" X 4" Tee W/Riser	25	B	1	9+92.9/Lt.	8.5'	5.0'

NOTE: Vertical Riser Pipe shall be extended to 2' minimum above ground water elevation and 4' maximum below proposed ground elevation.

CRISS OPTICAL 3



BUILT PER PLAN



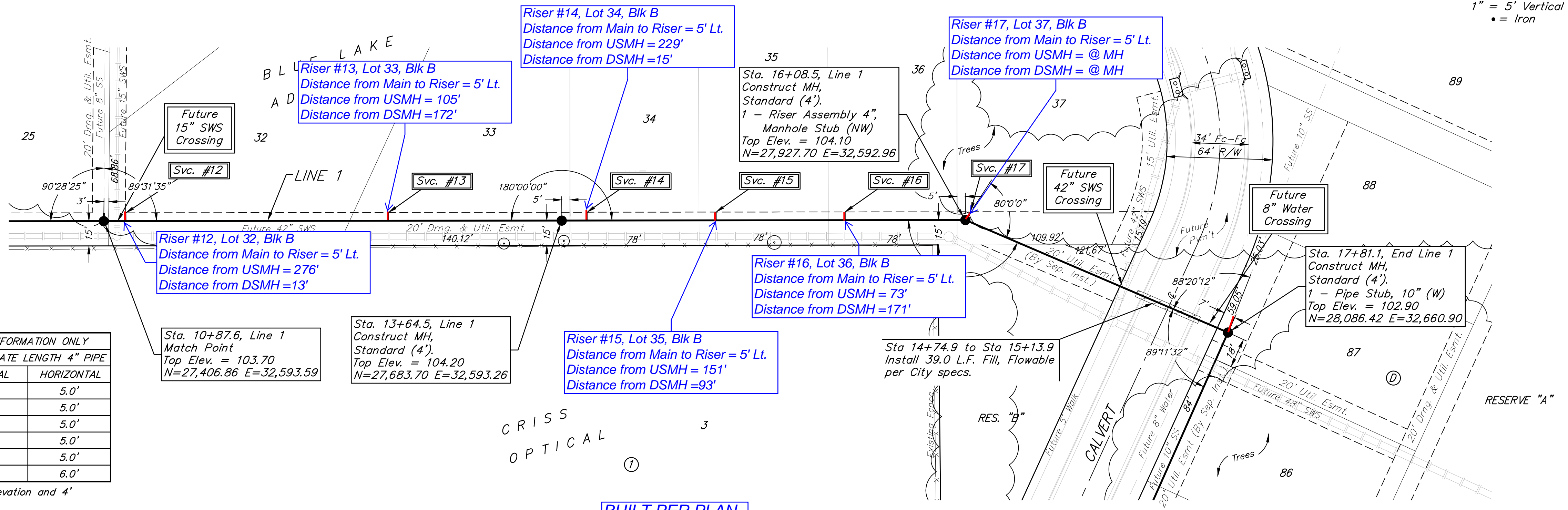
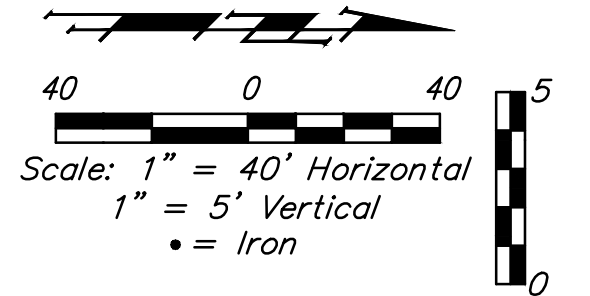
Contractor shall verify location and depth of existing manhole prior to construction and notify Engineer of any discrepancy.

BENCHMARKS:

BM #1: "□" on top of SW curb of Bulfinch Drive, SE corner of Lot 40, Block D, Blue Lake Addition
Elev. = 102.10 (City Datum)

BM #2: "□" on top of east curb of bulb of Sabin Ct., NW corner of Lot 58, Block D, Blue Lake Addition
Elev. = 105.61 (City Datum)

BM #3: "□" on top of south curb of bulb of Sabin Ct., NW corner of Lot 51, Block D, Blue Lake Addition
Elev. = 102.30 (City Datum)



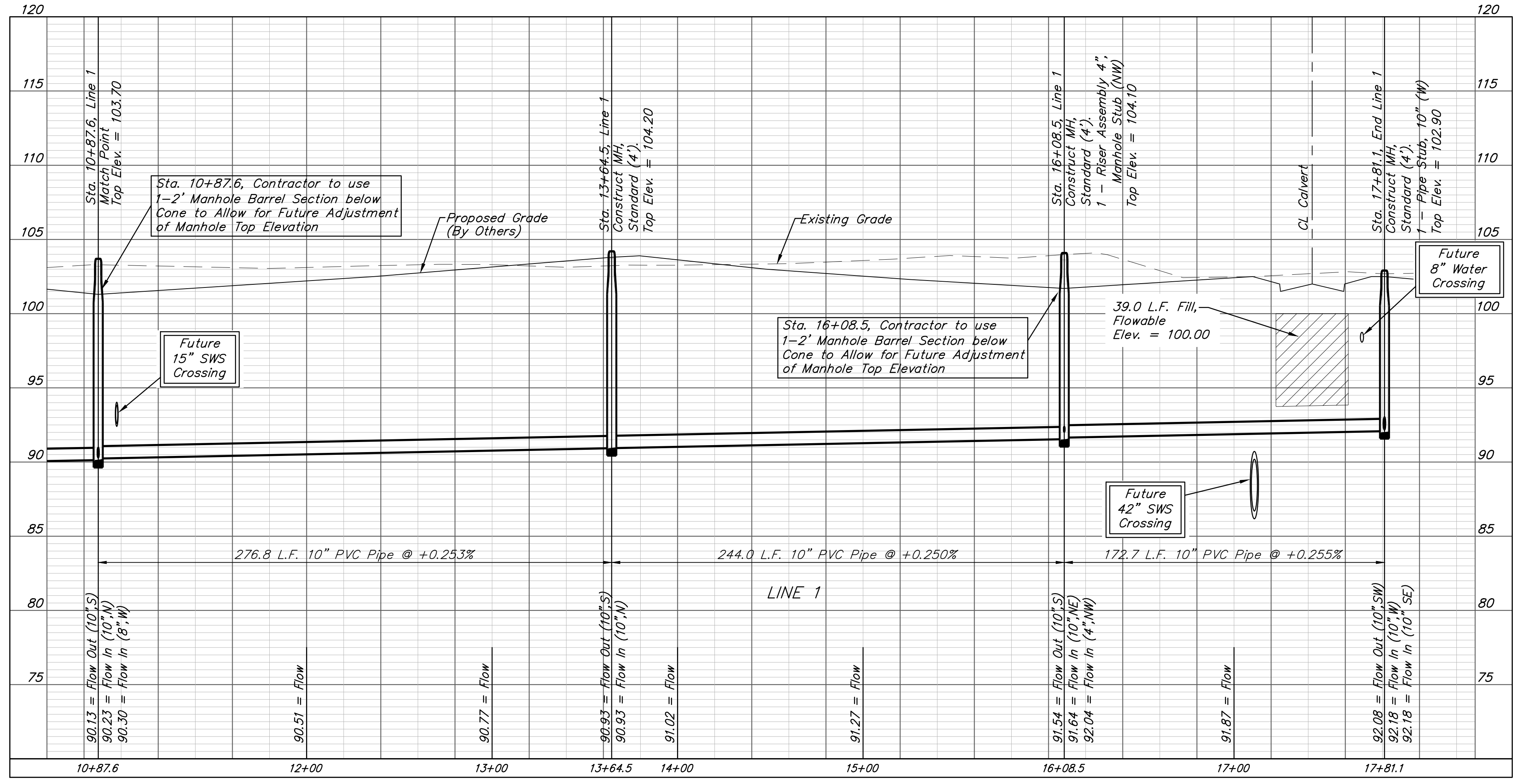
SEWER SERVICE TABLE

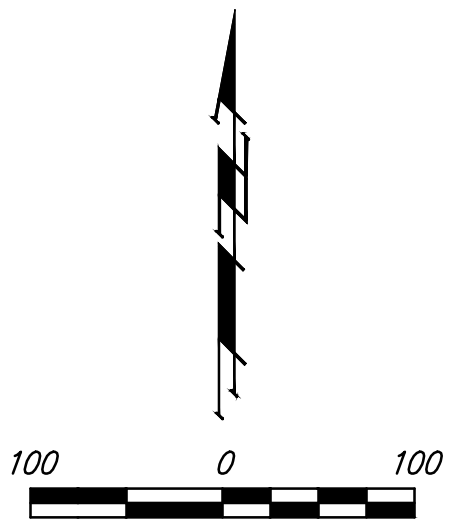
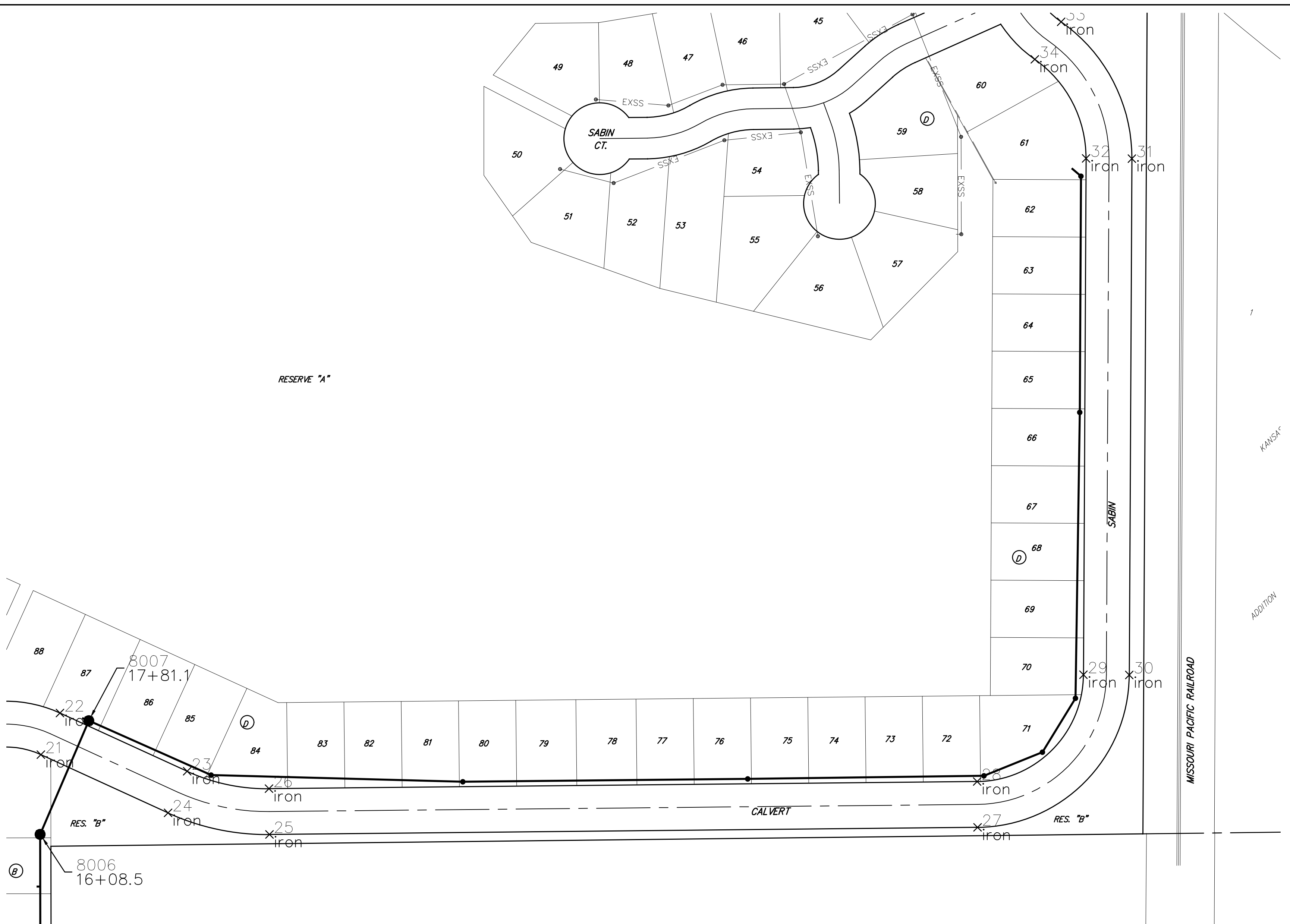
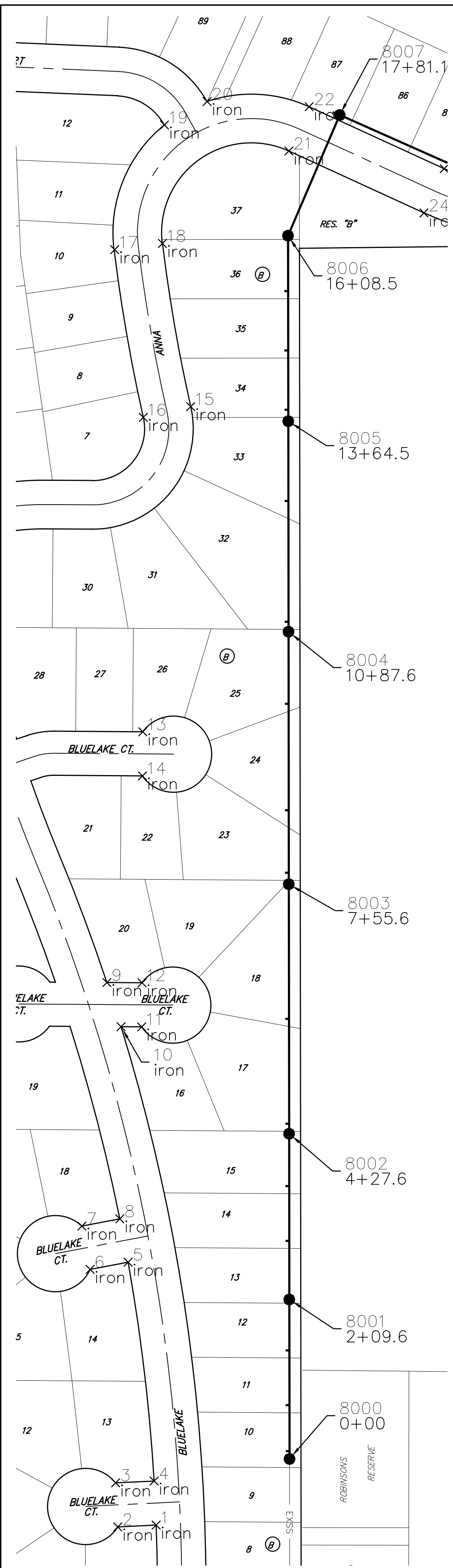
NUMBER	TYPE	LOCATION			STATION \ DIRECTION	FOR INFORMATION ONLY	
		LOT NO.	BLOCK NO.	LINE NO.		APPROXIMATE LENGTH 4" PIPE	
12	8" X 4" Tee W/Riser	32	B	1	11+00.6/Lt.	7.5'	5.0'
13	8" X 4" Tee W/Riser	33	B	1	12+59.4/Lt.	8.0'	5.0'
14	8" X 4" Tee W/Riser	34	B	1	13+79.4/Lt.	8.5'	5.0'
15	8" X 4" Tee W/Riser	35	B	1	14+57.4/Lt.	8.0'	5.0'
16	8" X 4" Tee W/Riser	36	B	1	15+35.4/Lt.	7.0'	5.0'
17	4" Stub W/Riser	37	B	1	16+08.5/Lt.	6.5'	6.0'

NOTE: Vertical Riser Pipe shall be extended to 2' minimum above ground water elevation and 4' maximum below proposed ground elevation.

Trees in conflict with sanitary sewer construction to be removed by contractor. To be paid for as lump sum bid item "Site Clearing"

All other trees shall remain and be protected from damage during construction. Overhanging limbs shall be trimmed by the Contractor using a chain saw only as necessary for construction and with approval of the Engineer. Cost of tree trimming to be included in bid item "Site Clearing"





IRONS

Point Table			
Point #	Northing	Easting	Raw Description
1	26232.10	32419.54	iron
2	26229.68	32368.96	iron
3	26287.62	32366.19	iron
4	26290.03	32416.77	iron
5	26577.80	32382.62	iron
6	26568.26	32332.67	iron
7	26625.23	32321.79	iron
8	26634.77	32371.74	iron
9	26945.53	32354.75	iron
10	26887.39	32373.38	iron
11	26887.20	32400.55	iron
12	26945.20	32400.96	iron
13	27275.21	32401.94	iron
14	27217.21	32401.53	iron
15	27702.84	32465.01	iron
16	27688.70	32402.59	iron
17	27909.20	32364.91	iron

SANITARY SEWER

Point Table			
Point #	Northing	Easting	Raw Description
18	27917.43	32427.74	iron
19	28073.18	32430.42	iron
20	28104.06	32486.48	iron
21	28038.97	32594.02	iron
22	28097.15	32620.67	iron
23	28015.78	32798.33	iron
24	27957.59	32771.67	iron
25	27927.45	32913.27	iron
26	27991.45	32912.62	iron
27	27937.40	33902.45	iron
28	28001.39	33901.81	iron
29	28150.64	34050.32	iron
30	28150.32	34114.32	iron
31	28871.70	34117.99	iron
32	28872.02	34053.99	iron
33	29062.87	34019.13	iron
34	29010.46	33982.40	iron

SANITARY SEWER

Point Table			
Point #	Northing	Easting	Raw Description
8000	26319.22	32594.92	0+00
8001	26528.83	32594.66	2+09.6
8002	26746.84	32594.40	4+27.6
8003	27074.85	32594.00	7+55.6
8004	27406.86	32593.59	10+87.6
8005	27683.70	32593.26	13+64.5
8006	27927.70	32592.96	16+08.5
8007	28086.42	32660.90	17+81.1

Blue Lake Addition
COORDINATE SHEET
 SANITARY SEWER IMPROVEMENTS

BAUGHMAN COMPANY, P.A.
 ENGINEERING, ARCHITECTURE, PLANNING, LANDSCAPE ARCHITECTURE
 15176
 5-7-19

