

SANITARY SEWER EXTENSION

to serve

Clear Creek Add. Phase 5 CITY OF WICHITA, KANSAS

Gary Janzen, P.E. City Engineer
Project Number 468-2019-004198
O.C.A. NO. 744487

GENERAL NOTES:

- The Contractor shall comply with all applicable safety regulations. All construction shall be completed following current City Standard Specifications and Special Provisions.
- Contractor will be required to provide notice to utility companies a minimum of seventy-two (72) hours prior to any excavation, as follows:

Kansas One-Call 687-2470

The Contractor must notify the following in case of an emergency:

AT&T 1-800-246-8464
City of Wichita Water & Sewer Dept. 1-316-219-8921
City of Wichita Stormwater 1-316-268-4090
City of Wichita Traffic 1-316-268-4034
Cox Communications 1-888-249-3530
Kansas Gas Service 1-888-482-4950
Westar Energy 1-800-544-4857
- Utility service lines, poles, etc. are to be adjusted as necessary by others prior to construction unless the plans specifically call for their adjustment by the Contractor or unless the plans specifically identify a utility to be adjusted by its owner during construction. Existing utilities and their location, as shown on the plans, represent the best information obtainable for design. The Contractor will be required to work around existing utilities within the right-of-way which do not conflict with proposed construction.
- Rubble from the removal of miscellaneous structures and excess excavation which is to be wasted shall be disposed of on sites to be provided by the Contractor. These sites shall be approved by the Engineer as to suitability, appearance and site location. Locations, in the opinion of the Engineer, that will leave an unsightly appearance will not be approved. All disposal sites must be approved by the Kansas Department of Health and Environment. Material either stockpiled or disposed of in a flood plain will require a Kansas State Board of Agriculture permit. Any material dumped in waters of the United States or wetlands is subject to U.S. Corps. of Engineers permitting regulations. Any material buried or stockpiled beyond approved construction limits will require additional archaeological investigations unless buried in a previously approved borrow location.
- Trees and shrubs in public right-of-way which are in direct conflict with proposed new construction shall be removed by the Contractor with the Engineer's approval. Trees and shrubs which are not in direct conflict with proposed new construction shall be saved and protected from damage.
- The Contractor shall give all property owners and/or tenants of developed property abutting the construction of this project a minimum of ten (10) days notice prior to start of construction.
- The Contractor shall be responsible for preserving property irons. The Contractor will be required to re-establish any property irons which are damaged or destroyed by his construction operations. Such irons shall be re-established by a licensed land surveyor in accordance with state laws.
- If traffic will be impacted by construction, a traffic control plan must be submitted and approved by the City Traffic Engineer, at traffic@wichita.gov before construction can begin. The Contractor shall be responsible for all traffic control measures to facilitate construction. All construction zone markings and signage shall conform to the latest version of the Manual on Uniform Traffic Control Devices (MUTCD) as published by the US Dept. of Transportation, Federal Highway Administration. All costs associated with construction markings and signage shall be the Contractors responsibility.
- All elevations shown are NAVD 88.
- All areas disturbed during construction that will not be under proposed pavement shall be restored to match existing conditions.
- The Contractor shall protect from damage and support existing utilities through constructions as approved by the utility owner and the Engineer at the contractors expense.
- Contractor shall limit the extent of trench openings overnight and weekends to less than 50 feet.

- All stubs and plugged pipes shall be located with green plastic tape in the same manner as risers.
- Connecting to Existing Manholes:

Prior to laying sewer lines using existing stubs in existing manholes, the Contractor shall expose and verify the elevation, grade and alignment of existing stubs and notify the Engineer of any deviation from the plans. Where connection to an existing manhole that does not have an existing stub or the stub is unusable due to elevation grade or alignment, the Contractor shall bore cut into existing manhole wall to make connection using approved water stop gasket, and reshape the existing manhole invert to provide smooth flow. The cost to connecting to existing manholes is incidental to the project.
- Contractor shall provide positive drainage away from all manhole covers.
- The Contractor shall prevent any construction debris from entering the existing sanitary sewer during construction.
- The Contractor shall be responsible for maintaining continuous flow of sewage through construction. Contractors proposed method for maintaining sewage flow shall be submitted and approved by the Sewer Maintenance Division (316-268-4073) prior to starting and by-passing of sewage flows.
- Any over excavation from manhole and pipe removal shall be backfilled with AB-3 compacted to 90-95% ASTM D698.
- No shrink or swell factors have been applied to the earthwork quantities shown on this project. All earthwork quantities are based on raw surface volume comparisons.
- Excess dirt generated from installation of underground utilities is to remain on site and be stockpiled on Lots 13-16.

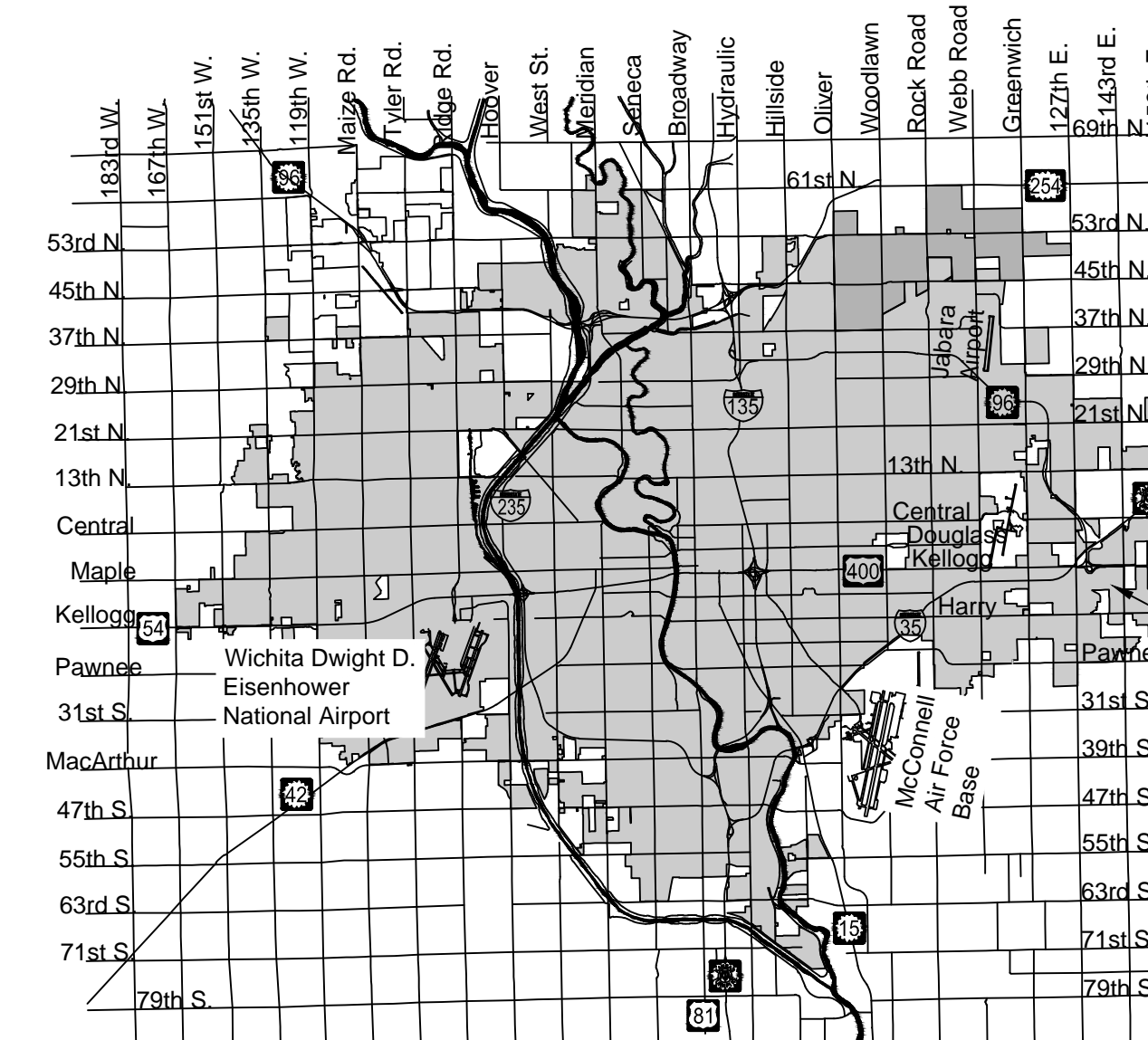
Benchmarks

BENCHMARK:

CHISELED SQUARE ON TOP OF CURB AT THE SOUTH CURB RETURN AT THE SOUTHWEST CORNER OF E. MORRIS ST. & E. WATSON ST.
ELEVATION = 1330.36 (NAVD88)

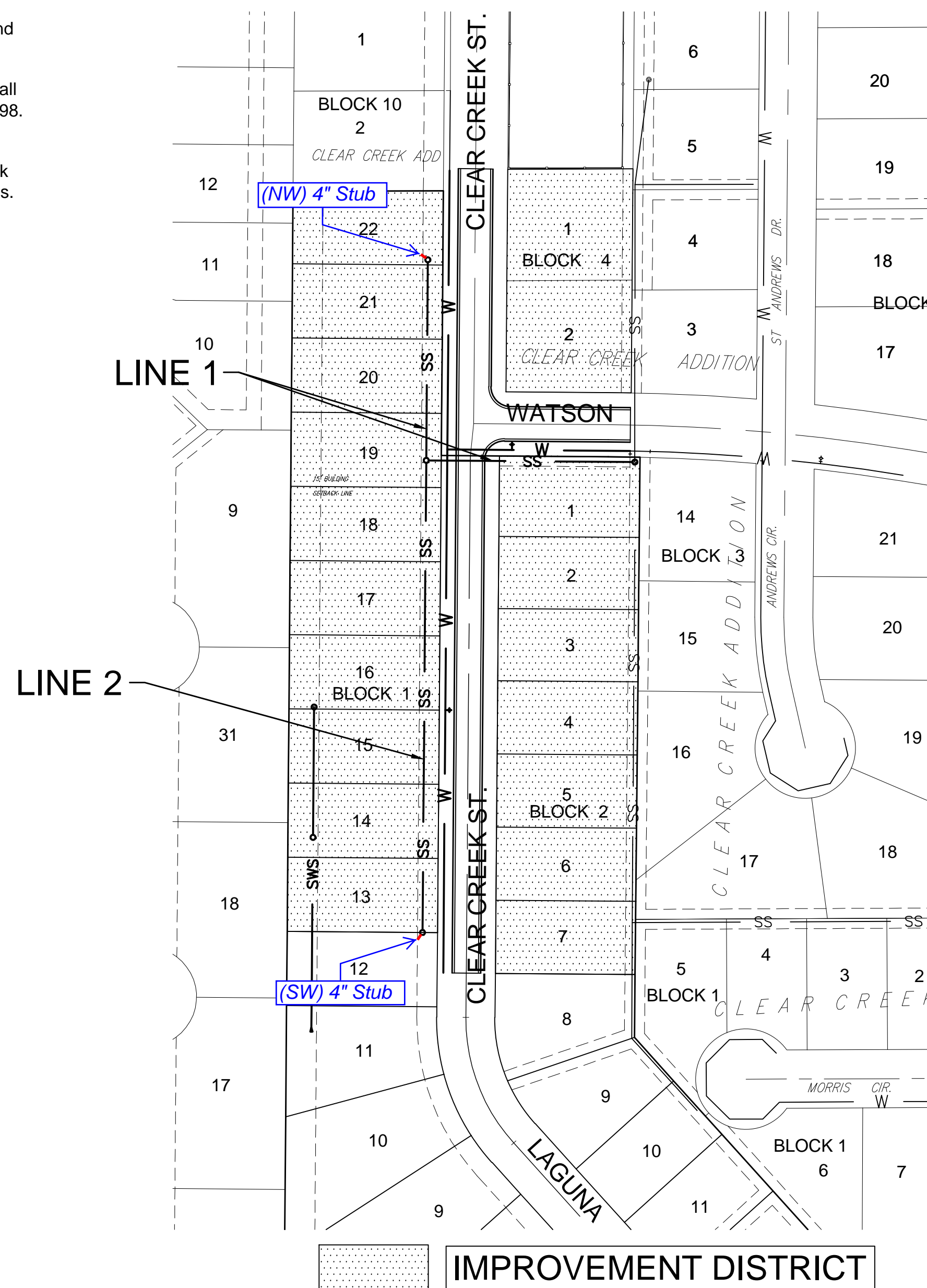
CHISELED SQUARE ON THE TOP OF CURB AT THE EAST CURB RETURN AT THE SOUTHEAST CORNER OF CREEKSIDE LN. AND GILBERT CIR.,
ELEVATION = 1316.45 (NAVD88)

Nowak Construction - Contractor
K. Yale - City of Wichita, Field Project Engineer
Z. Regnier - City of Wichita, Inspector
As-built
Stubs
Release Date for connection purposes only: 4/15/2020
Completion Date:
pdf: apr 4/17/20



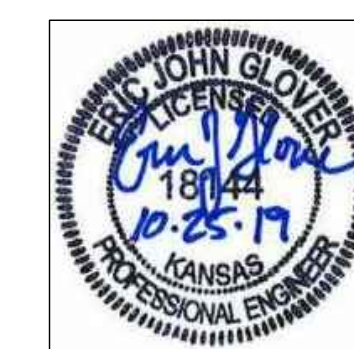
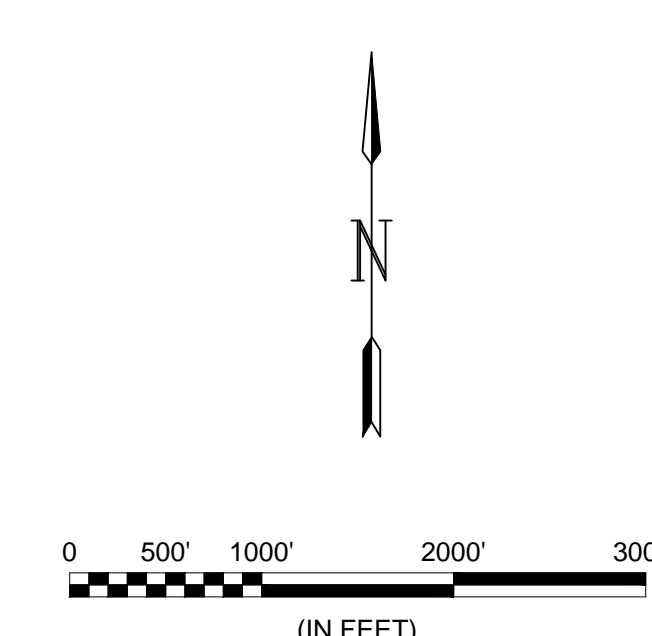
PROJECT LOCATION

Vicinity Map



Sheet Index

Sheet	Title
1	Coversheet
2	SS LINE 1
3	SS LINE 2
4	Pre-Cast SS MH
5	MH Frame & Cover
6	SS BUBBLE MAP
7	ADDITION BUBBLE MAP-SS
8	EROSION CONTROL PLAN SS
9	SW-501
10	SW-502
11	SW-503
12	SW-504
13	SW-505
14	CLEAR CREEK ADD. PLAT
15	CLEAR CREEK 3RD ADD. PLAT



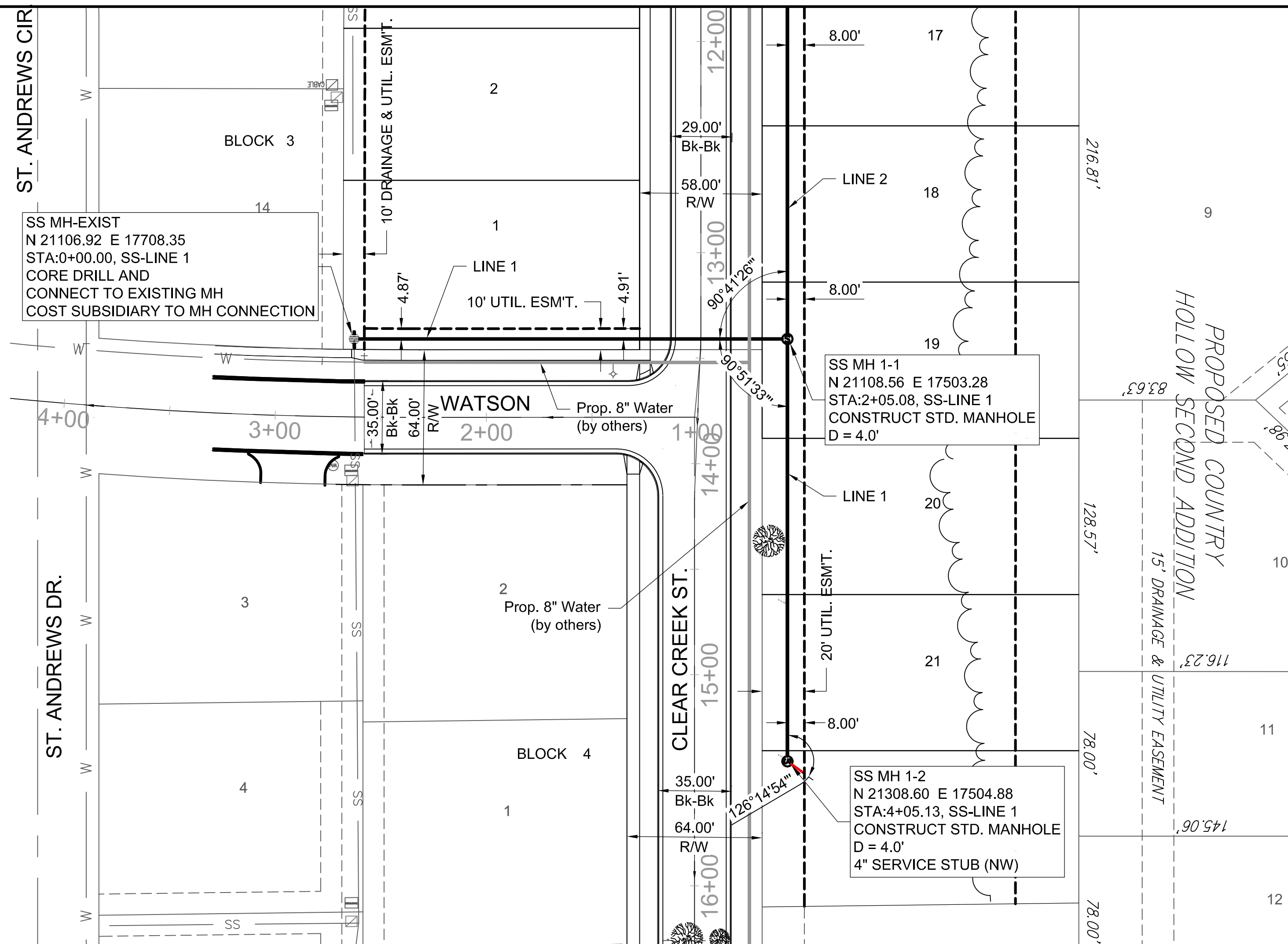
September 2019

PLANS PREPARED BY

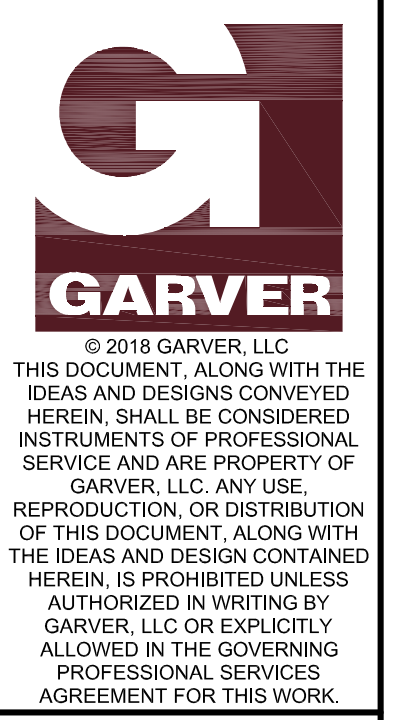
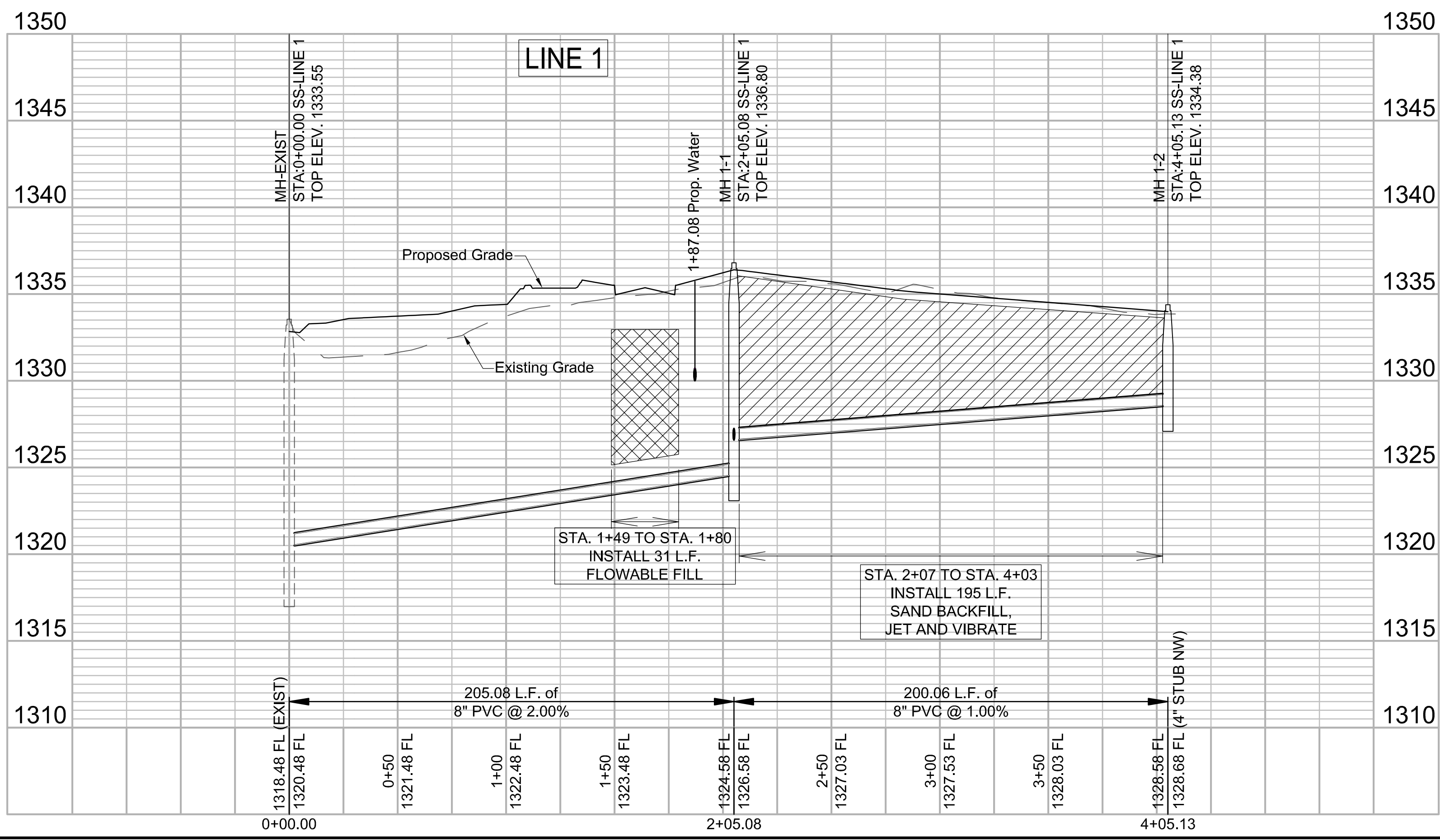
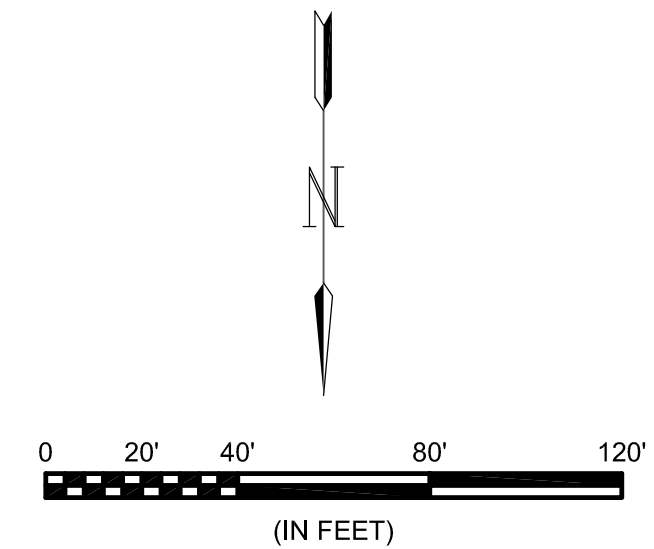
PLAN SET REVIEWED BY GARVER
D. Zimmerman 10/25/2019
SIGNATURE DATE



File: L:\2018\18267009 - clear creek ph 5 engineering\Drawings\C3D\SS\SS-LINE 1.dwg Last Save: 10/25/2019 11:03 AM Last saved by: E.J.Glover
 Last plotted by: Glover, Eric J. Plot Style: --- Plot Scale: 1:2.5849 Plot Date: 10/25/2019 12:36 PM Plotter used: None



BUILT PER PLAN



8535 E. 21st Street N.
 Wichita, KS 67206
 (316) 264-8008



REV.	DATE	DESCRIPTION	BY



CITY OF WICHITA
 WICHITA, KANSAS

CLEAR CREEK
 PHASE 5 - SS

SS LINE 1

JOB NO.: 18267009
 DATE: OCT. 2019
 DESIGNED BY: E.JG
 DRAWN BY: DRS

BAR IS ONE INCH ON
 ORIGINAL DRAWING
 0 1" = 120'
 IF NOT ONE INCH ON THIS SHEET,
 ADJUST SCALES ACCORDINGLY.

DRAWING NUMBER

SHEET
 NUMBER **2** OF **15**



© 2018 GARVER, LLC
 THIS DOCUMENT, ALONG WITH THE IDEAS AND DESIGNS CONVEYED HEREIN, SHALL BE CONSIDERED INSTRUMENTS OF PROFESSIONAL SERVICE AND ARE PROPERTY OF GARVER, LLC. ANY USE, REPRODUCTION, OR DISTRIBUTION OF THIS DOCUMENT, ALONG WITH THE IDEAS AND DESIGN CONTAINED HEREIN, IS PROHIBITED UNLESS AUTHORIZED IN WRITING BY GARVER, LLC OR EXPLICITLY ALLOWED IN THE GOVERNING PROFESSIONAL SERVICES AGREEMENT FOR THIS WORK.

8535 E. 21st Street N.
 Wichita, KS 67206
 (316) 264-8008



REV.	DATE	DESCRIPTION	BY



CITY OF WICHITA
 WICHITA, KANSAS
 CLEAR CREEK
 PHASE 5 - SS

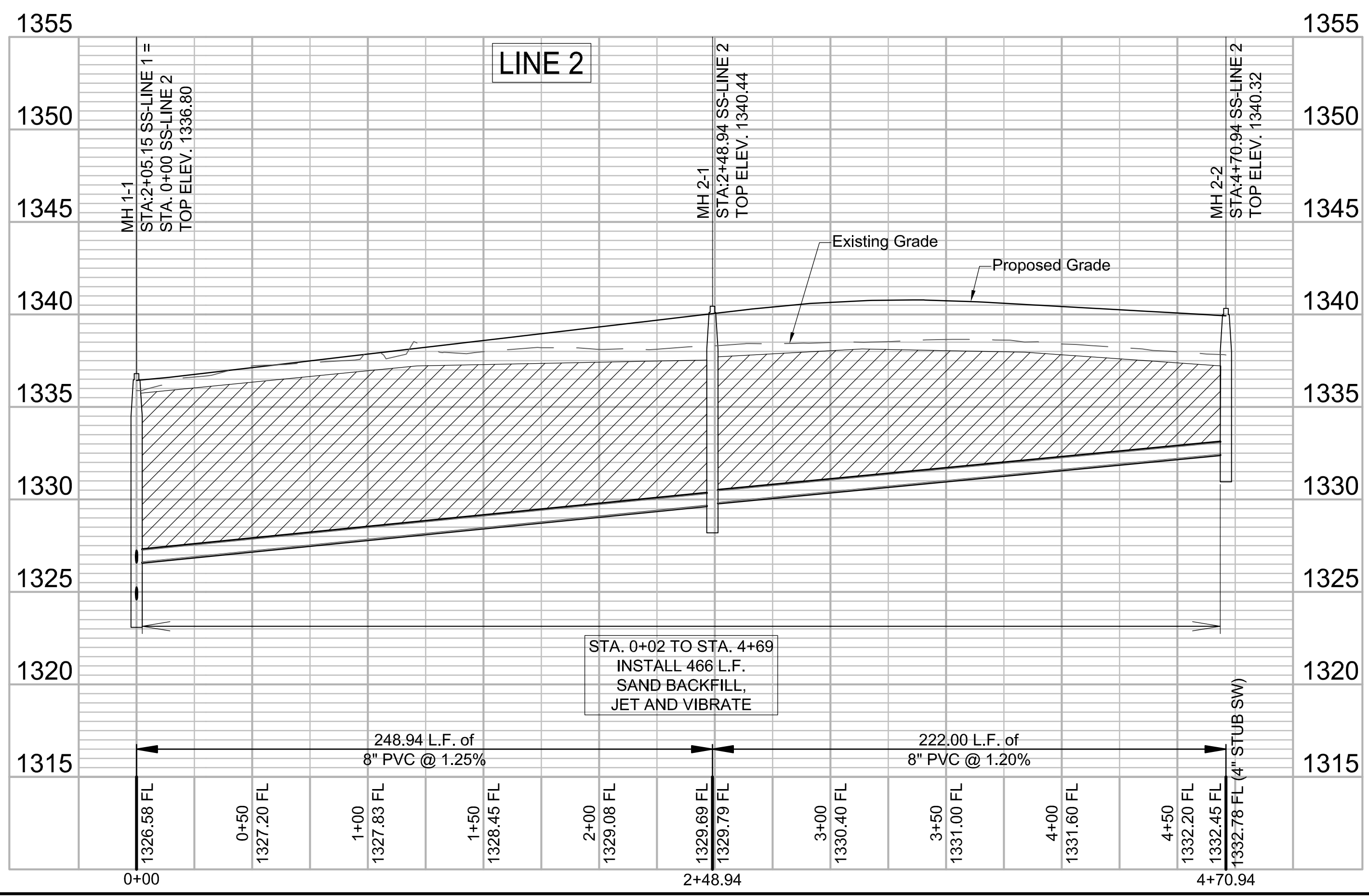
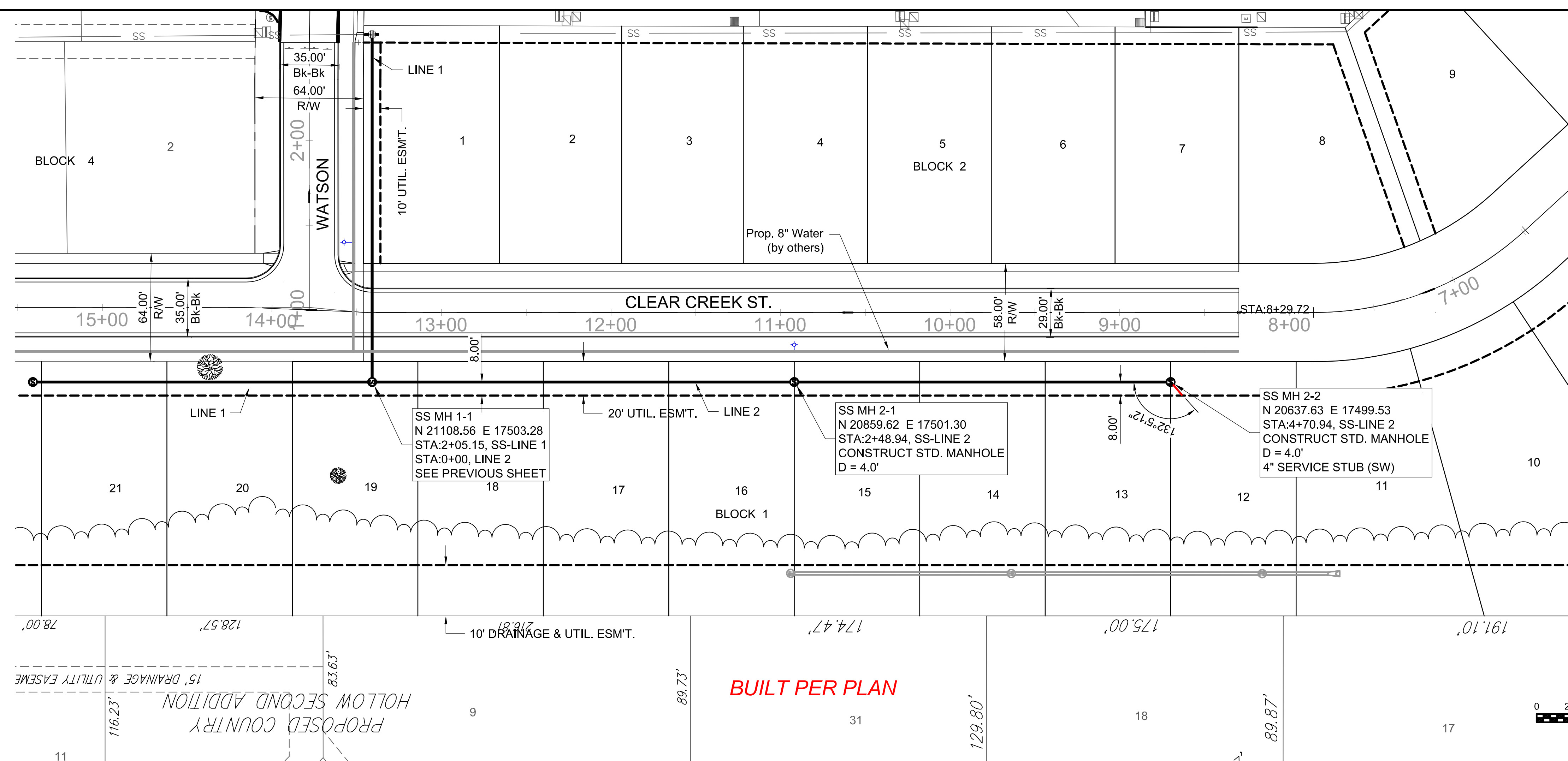
SS LINE 2

JOB NO.: 18267009
 DATE: OCT. 2019
 DESIGNED BY: E.J.G.
 DRAWN BY: DRS

BAR IS ONE INCH ON ORIGINAL DRAWING
 0" = 1" IF NOT ONE INCH ON THIS SHEET, ADJUST SCALES ACCORDINGLY.

DRAWING NUMBER

SHEET NUMBER **3** OF **15**



File: L:\2018\18267009 - clear creek ph 5 engineering\Drawings\C3D\SS\SS LINE 2.dwg, Last Save: 10/25/2019 11:16 AM, Last saved by: E.J.Glover
 Last plotted by: Glover, Eric J., Plot Style: ---, Plot Scale: 1:2,5849 Plot Date: 10/25/2019 12:39 PM, Plotter used: None

Files: I:\2018\18267009 - clear_creek_ph 5 engineering\Drawings\CAD\18267009-Coordinate Sheets.dwg Last Save: 10/25/2019 11:28 AM Last saved by: E.J.Glover
 Last plotted by: Glover, Eric J. Plot Style: --- Plot Scale: 1:2.5649 Plot Date: 10/25/2019 11:30 AM Plotter Used: None



Point Table			
Point #	Northing	Easting	Description
600	21106.92	17708.35	EXIST MH
601	21108.58	17500.28	MH 1-1
602	21308.63	17501.88	MH 1-2
603	20859.64	17498.30	MH 2-1
604	20637.65	17496.53	MH 2-2



© 2018 GARVER, LLC
 THIS DOCUMENT, ALONG WITH THE IDEAS AND DESIGNS CONVEYED HEREIN, SHALL BE CONSIDERED INSTRUMENTS OF PROFESSIONAL SERVICE AND ARE PROPERTY OF GARVER, LLC. ANY USE, REPRODUCTION, OR DISTRIBUTION OF THIS DOCUMENT, ALONG WITH THE IDEAS AND DESIGN CONTAINED HEREIN, IS PROHIBITED UNLESS AUTHORIZED IN WRITING BY GARVER, LLC OR EXPLICITLY ALLOWED IN THE GOVERNING PROFESSIONAL SERVICES AGREEMENT FOR THIS WORK.

8535 E. 21st Street N.
 Wichita, KS 67206
 (316) 264-8008



REV.	DATE	DESCRIPTION	BY



CITY OF WICHITA
 WICHITA, KANSAS
 CLEAR CREEK
 PHASE 5 - SS

SS BUBBLE MAP

JOB NO.: 18267009
 DATE: OCT. 2019
 DESIGNED BY: .
 DRAWN BY: .

BAR IS ONE INCH ON ORIGINAL DRAWING
 IF NOT ONE INCH ON THIS SHEET, ADJUST SCALES ACCORDINGLY.

DRAWING NUMBER

